

HIGH SCHOOL TRACK & FIELD ANNUAL

1959

\$1.00

Edited by
**FRAN ERROTA
DON NASH**

DALLAS LONG
1958's High School
Athlete of the Year

Published by
**TRACK & FIELD
NEWS**



Dennis Anderson
360 Lennox Avenue
Menlo Park, Calif.

1959 HIGH SCHOOL TRACK & FIELD ANNUAL

Copyright 1959 by Track & Field News

Published by Track & Field News, Box 296, Los Altos, Calif.

\$1.00

FOREWORD

This is the fourth edition of the High School Track & Field Annual. For the first time the essential format has been changed somewhat. In the first three editions we featured a list of all-time best performers, listing 50 to 60 per event last year. This edition includes a shorter all-time list of best performers and devotes more space to an enlarged 1958 performers list. Also added is a first ever best performances list and other features.

An enlarged all-time best performers list will be presented every second or third year. Meanwhile, readers wishing to elaborate on the list in this edition can do so by integrating 1958 marks with the lengthy all-time list found in the 1968 edition of the High School Annual (available from Track & Field News for \$1.00).

No mark has been restricted because of type of meet, competition or whether it was or was not a winning effort. Marks made in AAU or other outside competition have been included as have non-winning marks in all types of competition where it has been assumed that such times (unofficial in most cases) are reasonably accurate. The object of this publication is to record best performances by high school athletes and to give recognition where it is due.

Timing in high school sprint and hurdle races are often questionable. Undoubtedly some of the non-wind times should be on the wind list and we will appreciate any information to that effect.

In the case of prep school boys some of them are completing their normal high school education while others are one or two years beyond the high school level. It was decided to include some marks by prep school boys if they had not received a diploma from previous attendance at a high school; had not attended a combined total of more than four years in a high school and prep school; and had not reached their 20th birthday. Many prep school marks were eliminated on the above specifications.

As there is no national age limit for high school athletes, and regulations vary from state to state, we have included all boys regularly enrolled in high school and under 20 years of age. There are several known exceptions, and probably more unknown, from the period of 30 or more years ago when it was more common among 20 year olds to compete in high school.

We thank all coaches, sports writers, athletes, fans and others who have helped to make this annual as complete and accurate as it is. Special mention is due to Dick Bank, who edited the first three editions of the Annual and who has done more than any other one person to bring order, accuracy and completeness to high school track and field statistics.

We will appreciate learning of any errors and of marks omitted.

DON NASH
FRAN ERROTA
P.O. Box 296
Los Altos, Calif.

ABBREVIATIONS:

n = non-winning performance

H = heat

sp = special event

m = meters

HS = indicates performance made in the high school division of an AAU, relay or invitational meet. All performances made in this type of meet that are not noted were made in open division against other than high school competition.

Site of performance is in same state as athlete's school unless otherwise noted.

ON THE COVER: Dallas Long, North High School, Phoenix, Ariz., high school track and field athlete for 1958. Long raised the interscholastic 12 pound shot put record to 69'3 $\frac{3}{8}$ " and startled the entire track world by putting the 16 pound shot 61'1 $\frac{1}{2}$ " while still 17 years of age. He also led the discus throwers for 1958 with a throw of 179'6". Dallas is now at the University of So. California.

1958 BEST PERFORMERS

100 YARD DASH

9.5	SID GARTON (New Boston, Tex.)	Cowtown Relays	Ft. Worth	5 Apr
	JIM PUCKETT (Cove, Ore.)	Pilot Rock Relays	Pilot Rock	19 Apr
9.6	ED BUCHANAN (Kearny, San Diego, Calif.)	v. Lincoln	San Diego	25 Apr
	FRANK BUDD (Asbury Park, N.J.)	State Conference	New Brunswick	28 May
	MEL CLIPPER (Muir, Pasadena, Calif.)	Southern Counties	Huntington Beach	8 Mar
	WILLIE DAVIS (Roosevelt, Los Angeles, Calif.)	v. Huntington Park	Los Angeles	25 Apr
	ZACK FORD (New Trier, Winnetka, Ill.)	District	Evanston	10 May
	JACK MOSTYN (Bergen Catholic, Oradell, N.J.)	Invitational	North Arlington	24 May
	ALTON THYGERSON (Pampa, Tex.)	State AA	Austin	3 May
	HUBIE WATSON (Jordan, Los Angeles, Calif.)	State	Long Beach	31 May
9.7n	JIM BATES (Manual Arts, Los Angeles, Calif.)	9.7	STAN RHODES (Hoover, Glendale, Calif.)	
n	BERT COAN (Pasadena, Tex.)		JOE TAYLOR (Carver, Miami, Fla.)	
	LARRY DUNN (Fremont, Los Angeles, Calif.)		JIM THOMAS (North Side, Ft. Worth, Tex.)	
n	BILL ERNEST (Helix, La Mesa, Calif.)	n	WILLIE WILLIAMS (Compton, Calif.)	
	DONNIE GILBERT (Pensacola, Fla.)	n	MIKE STELL (Paschal, Ft. Worth, Tex.)	
	LEROY JACKSON (Bloom, Chicago Heights, Ill.)		DAVID GREEN (Richland Springs, Tex.)	
n	TOMMY MINTER (Gladewater, Tex.)		JOHN COUNTS (New Rochelle, N.Y.)	
	BRADSHAW MURPHY (Hobbs, New Mexico)			
		<u>WIND AIDED</u>		
9.4	JIM PUCKETT (Cove, Ore.)	9.7	DON ADAMS (Groesbeck, Tex.)	
	J.M. THOMAS (North Side, Ft. Worth, Tex.)		JULIUS GLOSSON (Brackenridge, San Antonio, Tex.)	
9.5	SID GARTON (New Boston, Tex.)		JUNIOR HOWARD (San Bernardino, Calif.)	
9.6	JIMMY BARBER (North Dallas, Tex.)		ED MC CORMICK (Wichita Falls, Tex.)	
	BERT COAN (Pasadena, Tex.)		DAVE MILLS (Lakewood, O.)	
	WILLIE DAVIS (Roosevelt, Los Angeles, Calif.)		LES PINDER (St. Francis, Brooklyn, N.Y.)	
n	DAVID GREEN (Richland Springs, Tex.)		ED WASHINGTON (Sewanhaka, Floral Park, N.Y.)	
n	KEN WALDROP (Highland Park, Dallas, Tex.)		JERRY WILLIAMS (Locmoy, Tex.)	
	JEROME WILLS (Roosevelt, Los Angeles, Cal.)		ROY SMALLEY (Greenville, Tex.)	
	HUBIE WATSON (Jordan, Los Angeles, Calif.)			
		<u>ROLLING START</u>		
9.4	JIM BATES (Manual Arts, Los Angeles, Calif.)			

220 YARD DASH

20.6	MEL CLIPPER (Muir, Pasadena, Calif.)	Southern Section	El Monte	24 May
20.7	JOHN FERNANDEZ (Bishop DuBois, New York City)	Metropolitan AAU Junior	New York City	29 Jun
20.8	SID GARTON (New Boston, Tex.)	State A (h)	Austin	2 May
	STAN RHODES (Hoover, Glendale, Calif.)	Southern Counties (h)	Huntington Beach	8 Mar
20.9	ALTON THYGERSON (Pampa, Tex.)	State AA	Austin	3 May
n	TOMMY MINTER (Gladewater, Tex.)	State AA	Austin	3 May
21.0	FRANK BUDD (Asbury Park, N.J.)	State Conference	New Brunswick	28 May
	JACK MOSTYN (Bergen Catholic, Oradell, N.J.)	State Catholic Ch.	Englewood	31 May
21.1	JIM BATES (Manual Arts, Los Angeles, Calif.)	State (h)	Long Beach	31 May
	JAMES HAMILTON (Fairmount Heights, D.C.)	Negro State Meet A	Dundalk	17 May
n	PHILLIP JACKSON (Central Consolidated, Bel Air, Md.)	Negro State Meet C	Dundalk	17 May
n	BRUCE MUNN (North Hollywood, Calif.)	State	Long Beach	31 May
n	ARNOLD TRIPP (Crawford, San Diego, Calif.)	Southern Section	El Monte	24 May
	HUBIE WATSON (Jordan, Los Angeles, Calif.)	v. Narbonne	Los Angeles	18 Apr
21.2	DICK AUSTIN (New Rochelle, N.Y.)	DICK LUND (Chico, Calif.)		
n	ED BUCHANAN (Kearny, San Diego, Calif.)	DAVE MILLS (Lakewood, O.)		
	SAM HARRIS (East, St. Louis, Ill.)	LES PINDER (St. Francis, Brooklyn, N.Y.)		
	LEROY JACKSON (Bloom, Chicago Heights, Ill.)			
		<u>WIND AIDED</u>		
20.6	JIMMY BARBER (North Dallas, Tex.)	n	JIM THOMAS (North Side, Ft. Worth, Tex.)	
	SID GARTON (New Boston, Tex.)		ED WASHINGTON (Sewanhaka, Floral Park, N.Y.)	
	JIM RICHARDSON (Tyler, Tex.)	21.0	BERT COAN (Pasadena, Tex.)	
20.7	KEN WALDROP (Highland Park, Dallas, Tex.)		DON VOORHEIS (Frankenmuth, Mich.)	
20.8	ED CASTLE (Weber, Ogden, Utah)	21.1	ARNOLD TRIPP (Crawford, San Diego, Calif.)	
20.9	JACK CARTER (South Mtn., Phoenix, Ariz.)		JEROME WILLS (Roosevelt, Los Angeles, Calif.)	
	DAVID GREEN (Richland Springs, Tex.)	21.2n	JOHN FALLON (St. Thomas, Houston, Tex.)	
	BRUCE MUNN (North Hollywood, Calif.)			

440 YARD DASH

46.6	DAVE MILLS (Lakewood, Ohio)	State	Columbus	24 May
48.1	MEL CLIPPER (Muir, Pasadena, Calif.)	v. Covina & Temple City	Pasadena	27 Feb
48.3	STEVE SCHWARTZ (St. Francis, La Canada, Cal.)	Divisional	Ontario	10 May
48.4	BOB CROSS (Boys Town, Nebr.)	State (h)	Lincoln	16 May
	BRUCE MC CULLOUGH (Pomona, Calif.)	v. Chaffey	Ontario	24 Apr
	PAT MC DONALD (Lubbock, Tex.)	State AA	Austin	3 May
48.5	BOB RAEMORE (Williamsport, Pa.)	State AA	University Park	24 May
	BILL STODDART (Marshall, Oklahoma City, Okla.)	State	Stillwater	10 May
	BOB WILCOX (Norman, Okla.)	Cowboy Relays	Stillwater	13 May
48.6	TIM CURTIS (Lowell, San Francisco, Calif.)	City	San Francisco	17 May
	DIXON FARMER (Miramonte, Orinda, Calif.)	State	Long Beach	31 May



MEL CLIPPER, record breaker in the 220.



DAVE MILLS, record breaker in the 440.

48.7 GEORGE COHEN (Edison, Stockton, Calif.)
 GARY COMER (Reseda, Los Angeles, Calif.)
 JOEY HERNANDEZ (Garces, Bakersfield, Calif.)
 GENE PRATT (Palmyra, N.J.)

48.8 LEROY BURCHETT (Boys, Brooklyn, N.Y.)
 JACK CARTER (South Mountain, Phoenix, Ariz.)
 DOUG TYNNAN (St. Francis, Brooklyn, N.Y.)

48.9n ART CRICHLAW (Jackson, New York City, N.Y.)

49.0n AL BIANCANI (Norte Del Rio, Sacramento, Calif.)
 BO CAMPBELL (Byrd, Shreveport, La.)
 DAVE DOUGLAS (East Bakersfield, Calif.)
 GIL HOLQUIN (Sanger, Calif.)
 R. E. MERRITT (Andrews, Tex.)
 RICH OVERYB (Principia Academy, St. Louis, Mo.)
 WILLIE WILLIAMS (Compton, Calif.)
 JERRY WILLS (Rosevelt, Los Angeles, Calif.)

880 YARD RUN

1:54.0 BILL CROWLEY (Compton, Calif.)
 1:54.7 JON DANTE (Union, N.J.)
 1:55.2 DICK MENCHACA (Lanier, San Antonio, Tex.)
 1:55.4 AL GENTRY (Fremont, Los Angeles, Calif.)
 1:55.5n MILFORD DAHL (Santa Ana, Calif.)
 n WARREN FARLOW (Hollywood, Calif.)
 1:55.7 DYROL BURLESON (Cottage Grove, Ore.)
 n FRANK HEGARTY (St. Francis, Brooklyn, N.Y.)
 n RICH KLIER (Castlemont, Oakland, Calif.)
 JOHN SILVEIRA (New Bedford, Mass.)
 BILL STONE (East, Wichita, Kans.)

1:55.9 REAGAN GASAWAY (Graham, Tex.)
 1:56.2 PAT NICASTRO (Roman Catholic, Philadelphia, Pa.)
 1:56.3n BRIAN LAMBERT (Chaminade, Mineola, N.Y.)
 1:56.4 DENNIS BOYLE (Bellarmine, San Jose, Calif.)
 n DON DURALL (Gonzaga, Spokane, Wash.)
 n ROGER KIRKWOOD (Cuero, Tex.)
 DAVE PELTY (Newport News, Va.)
 1:56.6 DICK DAVIS (Polytechnic, Long Beach, Calif.)

Southern Section El Monte 24 May
 State New Brunswick 7 Jun
 Regional San Antonio 19 Apr
 State Long Beach 31 May
 Southern Section El Monte 24 May
 State Long Beach 31 May
 Sub-District Springfield 15 May
 Invitational Englewood, N.J. 17 May
 State Long Beach 31 May
 Boston Interscholastic Boston 17 May
 Junior Olympics Lawrence 5 Jun

1:56.7 NORM FONES (Grant, Portland, Ore.)
 FRANK KNYBEL (Venice, Los Angeles, Calif.)
 1:56.8 KEN TAYLOR (Lee, Baytown, Tex.)
 DICK TUFT (Milburn, N.J.)
 1:56.9n NOEL BING (Tenafly, N.J.)
 1:57.1n RONNIE CHASE (University, Los Angeles, Calif.)
 JERRY WEBB (Central, Tulsa, Okla.)

ONE MILE RUN

4:12.2n DYROL BURLESON (Cottage Grove, Ore.)
 4:17.9 JOHN COOPER (Technical, Ft. Worth, Tex.)
 4:18.2 ARCHIE SAN ROMANI (East, Wichita, Kans.)
 4:18.9 TOM LARIS (Washington, New York City, N.Y.)
 4:20.2 BILL DOTSON (Concordia, Kans.)
 JERRY NELSON (Faribault, Minn.)
 4:21.8 REMINGTON PURDY (Grosse Pointe, Mich.)
 n ERIC GROON (Leonia, N.J.)
 4:22.0 WOODY COVINGTON (Compton, Calif.)
 TOM DEMPSEY (Stepinac, White Plains, N.Y.)

4:22.5n LEROY NEAL (Fullerton, Calif.)
 JOE FRANCELLO (North Arlington, N.J.)
 4:22.6 ALLEN CHAPMAN (Simpson, Huntington, N.Y.)
 BOB MELLGREN (El Monte, Calif.)
 DALE STORY (Orange, Calif.)
 4:23.0 JIM DAVIS (North Akron, O.)
 4:23.3n TOM LILE (Antelope Valley, Lancaster, Cal.)
 4:23.4 FRANK BALLINGER (Mooseheart, Ill.)

AAU (h) Bakersfield, Cal. 20 Jun
 State AA Austin 3 May
 Junior Olympics Lawrence 5 Jun
 Eastern Interscholastic New York City 14 Jun
 Kansas Relays (HS) Lawrence 18 Apr
 State Minneapolis 3 Jun
 State A Ann Arbor 24 May
 Eastern Interscholastic New York, N.Y. 14 Jun
 Compton Cup Compton 19 Apr
 Rye Invitational Rye 10 May

4:23.4 DANNY METCALF (Altus, Okla.)
 4:23.6n MARK MULLIN (Mt. Carrol, Ill.)
 4:23.7n BOBBY BARRETT (Midland, Tex.)
 CLAYTON WARD (Wilson, Long Beach, Calif.)
 4:23.9 JOHN ESCHLE (Groom, Tex.)
 4:24.0 DERYL KING (Valley, West Des Moines, Ia.)
 4:24.3 TED ABRAMS (Grant, Portland, Ore.)
 n ANGELO SIVIERI (West Catholic, Philadelphia, Pa.)

120 YARD HIGH HURDLES

14.0 HERB GAINES (Casa Grande, Ariz.)
 BOBBY GILL (Edison, Fresno, Calif.)
 LEON PRAS (Dover, N.J.)
 KEN PRETZER (Roosevelt, Fresno, Calif.)

14.1 FLOYD JAMES (Centennial, Compton, Calif.)
 DANNY LEE (Mt. Lebanon, Pittsburgh, Pa.)
 REX WILSON (Snyder, Tex.)

14.2 JIM ASHMORE (Evanston, Ill.)
 DARIAN CALHOUN (Ingleswood, Calif.)
 STEVE PAULY (Beaverton, Ore.)
 n BOB SWAFFORD (Abilene, Tex.)
 n LLOYD WINSTON (Merced, Calif.)

14.3n BOB BERNARD (Graham, Tex.)
 n LARRY GUILFORD (Santa Clara, Calif.)
 BILLY HULTZ (Lincoln, San Diego, Calif.)

Miami Invitational Miami 19 Apr
 Central Section Bakersfield 24 May
 County Morristown 31 May
 City Fresno 25 Apr
 Divisional Compton 17 May
 State AA University Park 24 May
 State AA Austin 3 May
 District Evanston 10 May
 v. Redondo Redondo 25 Mar
 District Portland 23 May
 State AA Austin 3 May
 Central Section Bakersfield 24 May

14.3 RON LEITCH (Grand Junction, Colo.)
 n STERLING MORGAN (Snyder, Tex.)
 n TOM WOODRUFF (Fresno, Calif.)

WIND AIDED

14.0 BILL CREVELING (LaGrange, Lake Charles, La.)
 DANNY LEE (Mt. Lebanon, Pittsburgh, Pa.)
 14.1 JACK ELWELL (Cathedral Latin, Cleveland, O.)
 14.2 BOB BERNARD (Graham, Tex.)

14.2 BUCKY EPPS (Brazosport, Freeport, Tex.)
 14.3 RAY CUNNINGHAM (Refugio, Tex.)
 BILLY HULTZ (Lincoln, San Diego, Calif.)

180 YARD LOW HURDLES

18.7 JUNIOR HOWARD (San Bernardino, Calif.)
 18.8 STERLING MORGAN (Snyder, Tex.)
 18.9 JIM ASHMORE (Evanston, Ill.)
 JIM BLAIR (Highland, Albuquerque, N.M.)
 WARREN CAWLEY (Farmington, Mich.)

19.0 DAVE DOUGLAS (East Bakersfield, Calif.)
 n DIXON FARMER (Miramonte, Orinda, Calif.)
 n TOMMY MINTER (Gladeater, Tex.)
 BENNIE SANKEY (Centennial, Compton, Calif.)
 GEORGE WILLIAMS (Muir, Pasadena, Calif.)

Chaffey Invitational Ontario 12 Apr
 State AA Austin 3 May
 District (h) Evanston 10 May
 District Albuquerque 3 May
 State A Ann Arbor 24 May
 Divisional (h) Madera 17 May
 State Long Beach 31 May
 State AA Austin 3 May
 Divisional Compton 17 May
 Foothill (h) Glendale 25 Apr

19.1	DEE ANDREWS (Polytechnic, Long Beach, Calif.)	19. In	BILLY HULTZ (Lincoln, San Diego, Calif.)
	BILLY COATES (Compton, Calif.)		IRAN KING (Ablilene, Tex.)
n	BOBBY GILL (Edison, Fresno, Calif.)		JIM MIKELL (Monrovia, Calif.)
	RON GREY (Lincoln, San Diego, Calif.)		
<u>WIND AIDED</u>			
18.8	STERLING MORGAN (Snyder, Tex.)	18.9n	GEORGE WILLIAMS (Muir, Pasadena, Calif.)
	BENNIE SANKEY (Centennial, Compton, Calif.)	19.0	RAY CUNNINGHAM (Refugio, Tex.)
18.9n	BILLY HULTZ (Lincoln, San Diego, Calif.)	19.1	RONNIE BULL (Bishop, Tex.)
	RAY POAGE (Lamar, Houston, Tex.)	n	DON PATTEN (Oak Park, Ill.)

HIGH JUMP

6'10 $\frac{3}{4}$ "	JOHN THOMAS (Rindge Tech, Cambridge, Mass.)	AAU Tour	Odawara, Japan	14 Sep
6'9"	PAUL STUBER (Bellflower, Calif.)	AAU	Bakersfield, Cal.	20 Jun
6'8 $\frac{3}{4}$ "	JOE FAUST (Culver City, Calif.)	Southern Pacific AAU	Eagle Rock	13 Jun
	HANK WYBORNEY (Pt. Angeles, Wash.)	Sub-District	Port Orchard	9 May
6'8"	RAY NICKELBERRY (Oxnard, Calif.)	State	Long Beach	31 May
6'7 $\frac{1}{4}$ "	MARLIN WALLING (El Camino, Sacramento, Calif.)	Junior Olympics	Sacramento	20 Aug
6'7"	CHARLES SMITH (Washington, Penn.)	v. Baldwin	Washington	18 Apr
6'6 $\frac{3}{4}$ "	DAVID EWING (Harding, Oklahoma City, Okla.)	Bison Relays	Shawnee	4 Apr
6'6"	CARL BURNETT (Jefferson, Los Angeles, Calif.)	State	Long Beach	31 May
6'5 $\frac{3}{4}$ "	JAMES HOWARD (Jefferson, Los Angeles, Calif.)	v. Washington	Los Angeles	21 Apr
6'5 $\frac{1}{2}$ "	STEVE WILLIAMS (Boyne City, Mich.)	6'4"	JACK FRAZIER (Rusk, Tex.)	
6'5"	NEWT BENNEN (San Bernardino, Calif.)		BOB HEILMAN (Beaverton, Ore.)	
	BERNE BLAKE (McClymonds, Oakland, Calif.)		HARRY HOWARD (Mission, San Francisco, Cal.)	
6'4 $\frac{3}{4}$ "	N. L. BRADLEY (Manual Arts, Los Angeles, Calif.)		NATE JACKSON (Polytechnic, San Francisco, Cal.)	
	CHARLEY SELLS (Roosevelt, Seattle, Wash.)		JERRY JENSEN (Wheat Ridge, Colo.)	
	RONNIE WASHBURN (Istrooma, Baton Rouge, La.)		DENNIS MARC (Jefferson, Daly City, Calif.)	
	THOMAS HOWARD (Jefferson, Los Angeles, Calif.)		FELTON RODGERS (Eastern, Detroit, Mich.)	
6'4 $\frac{3}{4}$ "	BOB MARSHALL (Bear Creek, Cob.)		GENE SARGENT (Polytechnic, Ft. Worth, Tex.)	
6'4 $\frac{1}{2}$ "	GARY BONAR (Buhl, Idaho)		JOHN TAPIA (Los Lunas, N.M.)	
	LARRY SPARING (Narbonne, Lomita, Calif.)		ANDY WILLIS (San Diego, Calif.)	

BROAD JUMP

25'3"	WILLIE DAVIS (Roosevelt, Los Angeles, Calif.)	Eastern League	Los Angeles	9 May
24'6"	STEVE ROGERS (Brawley, Calif.)	State	Long Beach	31 May
24'3 $\frac{3}{4}$ "	TONY LORICK (Fremont, Los Angeles, Calif.)	v. Dorsey	Los Angeles	18 Apr
24'1 $\frac{1}{2}$ "	TED JACKSON (Elkhart, Ind.)	Northern Indiana Conf.	Elkhart	3 May
24'	GEORGE WILLIAMS (Kearny, San Diego, Calif.)	v. San Diego	San Diego	15 Apr
23'10 $\frac{1}{4}$ "	DAN MOORE (South Salem, Ore.)	State	Corvallis	31 May
23'10"	JESSE SIRLES (Polytechnic, San Francisco, Calif.)	City	San Francisco	17 May
23'9 $\frac{3}{4}$ "	ARNOLD TRIPP (Crawford, San Diego, Calif.)	Divisional	San Diego	10 May
23'9 $\frac{1}{2}$ "	DEE ANDREWS (Polytechnic, Long Beach, Calif.)	Long Beach Relays	Long Beach	21 Apr
23'8 $\frac{1}{2}$ "	BOBBY WYATT (North Dallas, Tex.)	District	Dallas	9 Apr
23'8"	BERT COAN (Pasadena, Tex.)	23'5"	WINSTON DOBY (Fremont, Los Angeles, Cal.)	
	FRED POLLEY (Fremont, Los Angeles, Calif.)		DUDLEY HAAS (Ray, Corpus Christi, Tex.)	
23'6 $\frac{3}{4}$ "	ERNE TAYLOR (Manual Arts, Los Angeles, Calif.)		WILLIE PREWITT (Willow Run, Mich.)	
23'6 $\frac{1}{2}$ "	WINSTON COOPER (Adams, New York City, N.Y.)		ED RICHARDSON (Patterson, Calif.)	
23'6 $\frac{1}{4}$ "	BILL EVANSON (La Puente, Calif.)	23'4 $\frac{3}{4}$ "	TERRY BAKER (Menlo-Atherton, Menlo Pk., C.)	
23'6"	JOHN HOWARD (San Bernardino, Calif.)		CLIFF STAHL (Dinuba, Calif.)	
	DIXON FARMER (Miramonte, Orinda, Calif.)	23'3 $\frac{3}{4}$ "	KEN TUCKER (Lincoln, San Diego, Calif.)	
		23'3"	RAYE RENFRO (Jefferson, Portland, Ore.)	

WIND AIDED

25'5"	WILLIE DAVIS (Roosevelt, Los Angeles, Calif.)
-------	---

POLE VAULT

14'1"	JOHN ROSE (Hoover, Glendale, Calif.)	State	Long Beach	31 May
14'	ROLANDO CRUZ (Mercersburg Academy, Pa.)	Mid-Atlantic AAU	Harrisburg	14 Jun
13'10 $\frac{1}{2}$ "	HENRY AGUIRRE (Belmont, Los Angeles, Calif.)	v. Wilson	Los Angeles	11 Apr
	GEORGE DAVIES (North Phoenix, Ariz.)	State	Tucson	10 May
13'9 $\frac{1}{2}$ "	JOE HARRIS (Baton Rouge, La.)	Ed Young Relays	Baton Rouge	16 Apr
13'8"	DICK CUNNINGHAM (West Phoenix, Ariz.)	Arizona AAU	Tempe	30 May
	MOE HANHL (South Mountain, Phoenix, Ariz.)	Arizona AAU	Tempe	30 May
13'7"	TOM COLTON (St. Ignatius, San Francisco, Calif.)	S. F. -Oakland Relays	Berkeley	27 May
	MEL HEIN (Pasadena, Calif.)	Foothill League	Glendale	2 May
	JOHN PENNEL (Coral Gables, Fla.)	v. Miami Jackson	Miami	10 Apr
	DON SCHAEFER (Oakland, Calif.)	S. F. -Oakland Relays	Berkeley	27 May
13'6 $\frac{3}{4}$ "	GARY PRICE (Fullerton, Calif.)	13'5 $\frac{1}{2}$ "	ERNE JONES (Wilson, Los Angeles, Calif.)	
13'6 $\frac{1}{2}$ "	JIM MANNING (Anaheim, Calif.)	13'5 $\frac{1}{4}$ "	MIKE CHANDLER (North Hollywood, Calif.)	
13'6"	CHARLIE BRECK (Santa Barbara, Calif.)	13'5"	BOB TSCHILLAR (Union, Phoenix, Ariz.)	
	HOWARD BROOKS (East, Columbus, O.)	13'4 $\frac{3}{4}$ "	ADRIAN COLLIE (Bellflower, Calif.)	
	DALLAS BUCHANAN (San Marino, Calif.)	13'3 $\frac{3}{4}$ "	CHET WOODWARD (Jackson, Miami, Fla.)	
	BOB JOHNSON (Glendale, Calif.)	13'3 $\frac{1}{2}$ "	BAYLUS BENNETT (Amarillo, Tex.)	
13'5 $\frac{3}{4}$ "	ROGER OLANDER (Grossmont, Calif.)		BILL BRINKWORTH (Burbank, Calif.)	

SHOT PUT

69'3 $\frac{1}{2}$ "	DALLAS LONG (North Phoenix, Ariz.)	Luke-Greenway Invitational Phoenix	16 May	
65'10 $\frac{1}{2}$ "	HENRY KORN (Stepinac, White Plains, N.Y.)	Invitational	Pelham	17 May
61'4 $\frac{1}{2}$ "	JACK SLOCOMBE (Millikan, Long Beach, Calif.)	State	Long Beach	31 May
61'2 $\frac{1}{2}$ "	JIM SMITH (Polytechnic, Long Beach, Calif.)	Long Beach Relays	Long Beach	21 Apr
60'6 $\frac{1}{2}$ "	HARRISON ROSDAHL (Ridgefield Park, N.J.)	State	New Brunswick	7 Jun
60'4 $\frac{1}{2}$ "	JOHN CHAMBERLAIN (Riverside, Calif.)	State	Long Beach	31 May



JOHN THOMAS, best ever prep high jumper.



High jump aces of 1958 (all juniors) -- Paul Stuber, Ray Nickleberry, Joe Faust.

59'9 ² "	PAUL LA SPINA (Wickliffe, O.)	State	Columbus	24 May
59'7 ³ "	JERRY NORDSTROM (Dos Palos)	Central Section	Bakersfield	24 May
59'7"	BOB BATDORF (Mercersburg Academy, Pa.)	Spiked Shoe (HS)	Philadelphia	15 Mar
59'6 ¹ "	JERRY DONINI (Highland Park, N.J.)	Central Jersey	Asbury Park	31 May
59'1 ³ "	TOM SEIFERT (North Side, Ft. Wayne, Ind.)	57'7 ² "	KAY LYBBERT (Moses Lake, Wash.)	
59'1"	CHET ROOTERS (Edison, Fresno, Calif.)	57'7 ¹ "	BOB HART (Morrisville, Penn.)	
58'10 ¹ / ₂ "	JOHN NICHOLSON (Hawthorne, Calif.)	57'7 ¹ / ₂ "	BILL HOOK (Ukiah, Calif.)	
58'9 ³ / ₂ "	DICK BROWN (Grant, Portland, Ore.)	57'6 ³ / ₂ "	MIKE VALLE (Yorktown, N.Y.)	
58'6"	JOHN VALENZA (Sewanhaka, Floral Park, N.Y.)	57'5 ¹ / ₂ "	RON WELDY (Piquia, Ohio)	
58'4 ¹ / ₂ "	BOB CRUMPACKER (East, Wichita, Kans.)	57'5 ¹ / ₂ "	BILL PETERS (Fairfax, Los Angeles, Calif.)	
58'2 ¹ / ₂ "	BOB ALBRIGHT (Mt. Lebanon, Pittsburgh, Penn.)	57'4 ¹ / ₂ "	BOB PETERSON (Marshall, Minn.)	
58'1 ¹ / ₂ "	TONY ANGELL (North Hollywood, Calif.)			

DISCUS THROW

179'6"	DALLAS LONG (North Phoenix, Ariz.)	Invitational	Glendale	21 Mar
178'5 ³ / ₂ "	KARL JOHNSTONE (North Phoenix, Ariz.)	v. Camelback	Phoenix	3 Apr
175'11 ¹ / ₂ "	BOB VERNON (Oberlin, Kans.)	State A	Manhattan	16 May
174'5 ¹ / ₂ "	JIMMY BROWN (McCallum, Austin, Tex.)	State AA	Austin	2 May
171'10 ¹ / ₂ "	JOHN BURNS (Fairburn, O.)	State	Columbus	24 May
171'8"	WALT MYERS (Odessa, Tex.)	Brady Relays	Brady	8 Mar
170'9 ¹ / ₂ "	BOB BATDORF (Mercersburg Academy, Pa.)	Stevens Trade Invitational	Lancaster	3 May
170'5 ¹ / ₂ "	BILL FRANK (Olympia, Wash.)	v. Tacoma Lincoln	Olympia	2 May
170'1 ¹ / ₂ "	DICK STAFFORD (Matador, Tex.)	Regional	Lubbock	19 Apr
169'11 ³ / ₂ "	BOB PETERSON (Marshall, Minn.)	State	Minneapolis	3 Jun
169'8"	BOB SHARPENTER (Marmion Acad., Aurora, Ill.)	166'3 ¹ / ₂ "	PAUL LA SPINA (Wickliffe, O.)	
169'1"	BOB MIDDLETON (Harding, Marion, O.)	165'9"	AL SANTIO (Hope, Providence, R.I.)	
168'10 ³ / ₂ "	CHUCK COLEMAN (Champaign, Ill.)	165'4"	GEORGE BUETTNER (McCarty, Ft. Pierce, Fla.)	
167'9 ¹ / ₂ "	DICK BROWN (Grant, Portland, Ore.)	164'10"	DAVE CHERNACK (Springfield, O.)	
166'8"	JERRY NORDSTROM (Dos Palos, Calif.)	164'3 ¹ / ₂ "	JACK SLOCOMBE (Millikan, Long Beach, Calif.)	
166'6 ¹ / ₂ "	BILL HOOK (Ukiah, Calif.)	164'3"	HARDY SPURGEON (Marshallfield, Coos Bay, Ore.)	
166'6 ¹ / ₂ "	KEN HOKENESS (Northfield, Minn.)	164'2"	SAL ROCHA (Austin, El Paso)	
166'1"	MIKE MC GETTIGAN (Beaverton, Ore.)	163'10 ¹ / ₂ "	GEORGE JOHNSON (Harding, Warren, O.)	

JAVELIN THROW

217'9 ¹ / ₂ "	JERRY SMITH (Junction City, Kans.)	Missouri Valley AAU	Merriam	31 May
215'11"	GLENN WINNINGHAM (Grants Pass, Ore.)	State	Corvallis	31 May
215'1 ¹ / ₂ "	GARY STENSLUND (Douglas, Portland, Ore.)	State	Corvallis	30 May
213'5"	WAYNE MC DONNELL (Haddon Heights, N.J.)	Invitational	Collingswood	28 May
210'4 ¹ / ₂ "	HARDY SPURGEON (Marshallfield, Coos Bay, Ore.)	v. Medford	North Bend	26 Apr
209'7"	DICK CLARK (Custer, Miles City, Mont.)	Divisional	Sidney	17 May
209'5 ¹ / ₂ "	BOB SCHMIDT (Milburn, N.J.)	State	New Brunswick	7 Jun
206'8 ¹ / ₂ "	BOB BATDORF (Mercersburg Academy, Penn.)	v. Hill School	Mercersburg	19 Apr
206'7 ¹ / ₂ "	VITO CETTA (Montclair, N.J.)	Essex County	Montclair	17 May
206'3"	JOE CAGE (Neville, Monroe, La.)	Junior AAU	Ruston	9 May
203'10 ¹ / ₂ "	DOUG KERR (Highland Park, N.J.)	199'1 ¹ / ₂ "	DON WALKER (Englewood, Kans.)	
203'3 ¹ / ₂ "	TIM BULLARD (Marshallfield, Coos Bay, Ore.)	197'11"	VIC HURTING (Courtland, Kans.)	
202'10 ¹ / ₂ "	FENTON TALBOTT (McPherson, Kans.)	196'4"	STEVE CURTIS (Parkrose, Portland, Ore.)	
202'5 ¹ / ₂ "	LUCIUS SCHULER (Millville, N.J.)	196'3 ¹ / ₂ "	JUNIOR HANKE (Newton, Kans.)	
202'3 ¹ / ₂ "	BILLY PLUMMER (Central, Cambria, Pa.)	194'5 ¹ / ₂ "	DARRELL ELDER (Salina, Kans.)	
199'8"	TOM BONK (New Britain, Conn.)	194'5 ¹ / ₂ "	DAVE OTERO (Los Lunas, New Mexico)	
199'5"	RON TURNER (Shawnee-Mission, Merriam, Kans.)	194'1"	TOM ERLANDSON (Bellingham, Wash.)	
199'2 ¹ / ₂ "	MARV TYLER (Lakeview, Ore.)			

DISCUS THROW (4 lb. 6.4 oz.)

152'1 ¹ / ₂ "	BILL HOOK (Ukiah, Calif.)	North Bay League	Santa Rosa	9 May
152'	BOB VERNON (Oberlin, Kans.)	Missouri Valley AAU	Merriam	31 May
146'3 ¹ / ₂ "	RON SNIDOW (San Rafael, Calif.)	v. Napa	Napa	22 Apr
145'9 ¹ / ₂ "	DAVE WEIL (Las Lomas, Walnut Creek, Calif.)	North Coast Section	Sunnyvale	24 May
145'	RON OWENS (Los Gatos, Calif.)	v. James Lick	Los Gatos	11 Mar
144'6"	BARRY ROTHMAN (Capuchino, Calif.)	San Mateo District	Burlingame	2 May
141'4 ¹ / ₂ "	ANDY ALKIRE (Santa Rosa, Calif.)	North Bay League	Santa Rosa	9 May
141'1 ¹ / ₂ "	HARRISON ROSDAHL (Ridgefield Park, N.J.)	140'7"	AL SANTIO (Hope, Providence, R.I.)	
140'11"	DENNY SCHMIDT (Bakersfield, Calif.)	140'6 ¹ / ₂ "	JACK SLOCOMBE (Millikan, Long Beach, Calif.)	
140'8 ¹ / ₂ "	GEORGE JOHNSON (Harding, Warren, O.)			

HOP-STEP-JUMP

45'9 ¹ / ₂ "	SHERIDAN DOWNEY (Castlemont, Oakland, Calif.)	Redwood City Carnival	Redwood City	19 Jul
45'4 ¹ / ₂ "	DEE ANDREWS (Polytechnic, Long Beach, Calif.)	All-Comers	Long Beach	12 Jul
45'3 ¹ / ₂ "	DON HERVEY (Stonewall, La.)	Meet of Champions	Shreveport	7 May
45'3"	FRED MC KELLAR (Plain Dealing, La.)	State B	Natchitoches	3 May
44'10"	LARRY CROW (Merryville, La.)	44'7 ¹ / ₂ "	DIXON FARMER (Miramonte, Orinda, Calif.)	
44'8"	BILL TURNER (James Lick, San Jose, Calif.)	44'7 ¹ / ₂ "	FERDIE MILLER (Church Point, La.)	

TWO MILE RUN

9:21.4	TOM LARIS (Washington, New York City, N.Y.)	Development	New York City	7 Aug
9:44.4n	JOHN NORTHWAY (Palo Alto, Calif.)	All-Comers	San Jose	3 May
9:48.5	MIKE LEHNER (Palo Alto, Calif.)	All-Comers	Burlingame	23 Aug
9:48.8	ART PITTMAN (Excelsior, Norwalk, Calif.)	All-Comers	El Monte	1 Aug
9:49.7n	GEORGE LINN (Palo Alto, Calif.)	All-Comers	Burlingame	1 Aug
9:50.0	JIM KELLY (Chaminade, Mineola, N.Y.)	9:56.5n	BILL YALEY (Serra, San Mateo, Calif.)	
9:54.9n	FURMAN MARSH (Morningside, Inglewood, Calif.)			

THREE MILE RUN

14:56.1 TOM LARIS (Washington, New York City, N.Y.) Metropolitan AAU Junior New York City 29 Jun

120 YARD HIGH HURDLES (42")

14.6n LARRY GULLFORD (Santa Clara, Calif.) AAU (h) Bakersfield 20 Jun
 14.7n JIM BLAIR (Highland, Albuquerque, N.M.) New Mexico AAU Albuquerque 10 May
 14.9 BOBBY GILL (Edison, Fresno, Calif.) Redwood City Carnival Redwood City 19 July

220 YARD LOW HURDLES

23.7 JUNIOR HOWARD (San Bernardino, Calif.) Southern Pacific AAU Eagle Rock 13 Jun
 24.0 JIM BLAIR (Highland, Albuquerque, N.M.) New Mexico AAU Albuquerque 10 May
 24.1 JIM BROWN (Ladue, Mo.) Ozark AAU St. Louis 24 May
 DIXON FARMER (Miramonte, Orinda, Calif.) All-Comers Burlingame 1 Aug

440 YARD RELAY

42.0* BRACKENRIDGE, San Antonio, Tex. State AA Austin 3 May
 (Richard Gose, Robert Alaniz, Louis Houston, Julius Glossen)
 42.2 BAKERSFIELD, Calif. Kern Relays Bakersfield 26 Apr
 (Curtis Young, Lloyd McCoy, Charles Mannings, Cecil Mannings)
 42.3n NORTH SIDE, Ft. Worth, Tex. State AA Austin 3 May
 (Floyd Porter, Jerry Dollar, Mickey Alcorn, Jim Thomas)
 42.4n ANDREWS, Tex. State AA Austin 3 May
 (Larry Shoemaker, Ray Ham, Tony Cain, Jerry Jetton)
 n DELANO, Calif. Kern Relays Bakersfield 26 Apr
 (Ronnie Suggs, Len Brown, Eftton Jones, Ruby Hill)
 42.5n PASADENA, Tex. 42.9 LAS VEGAS, Nev.
 n PASCHAL, Ft. Worth, Tex. 43.0 HOBBS, New Mexico
 42.7 YATES, Houston, Tex. RIVERSIDE, Ft. Worth, Tex.
 42.8n LAMAR, Houston, Tex. 43.1 ABILENE, Tex.
 42.9 CENTRAL, Little Rock, Ark. NEW ROCHELLE, N.Y.
 LEE, Baytown, Tex. CARDOZO, Washington, D.C.

* = made with rolling start

880 YARD RELAY

1:27.7 MANUAL ARTS, Los Angeles, Calif. State (h) Long Beach 31 May
 (Ernie Taylor, Ken Harris, Dale Powell, Jim Bates)
 1:27.9 POLYTECHNIC, Long Beach, Calif. Southern Section El Monte 24 May
 (Dee Andrews, Dick Davis, Jerry Galbreath, Bill Barbee)
 1:28.0 HARDING, Oklahoma City, Okla. State Stillwater 10 May
 (Norm Neaves, Bill Townsend, Mark Sullivan, Dick Sinclair)
 1:28.1 BAKERSFIELD, Calif. Central Section Bakersfield 24 May
 (Curtis Young, Lloyd McCoy, Charles Mannings, Cecil Mannings)
 1:28.2n DELANO, Calif. Kern Relays Bakersfield 26 Apr
 (Ronnie Suggs, Len Brown, Eftton Jones, Ruby Hill)
 n HOOVER, Glendale, Calif. Southern Section El Monte 24 May
 (Stan Rhodes, Ron Hinrichs, Wayne Dye, John Marshall)
 1:28.3 FREMONT, Los Angeles, Calif. 1:28.5n SAN BERNARDINO, Calif.
 1:28.5n COMPTON, Calif. n SAN DIEGO, Calif.
 n MUIR, Pasadena, Calif. 1:28.8 SOUTHWEST, Kansas City, Mo.
 n ROOSEVELT, Los Angeles, Calif. 1:28.9 BERKELEY, Calif.
 n LINCOLN, San Diego, Calif. n EAST BAKERSFIELD, Calif.

ONE MILE RELAY

3:17.5 ST. FRANCIS, Brooklyn, N.Y. Penn Relays Philadelphia 26 Apr
 (Frank Hegarty, Joe Armstead, Doug Tynan, Les Pinder)
 3:18.2 ANDREWS, Tex. State AA Austin 3 May
 (Ronnie Brice, Larry Shoemaker, R.E. Merritt, Jerry Jetton)
 3:18.5n LAMAR, Houston, Tex. State AA Austin 3 May
 (Jim Able, Gus Comiskey, Chris Brown, Ray Poage)
 3:18.8n LEE, Baytown, Tex. State AA Austin 3 May
 (Lynn Gray, Wayne Porter, Pat Guidary, Bill Hearon)
 3:20.2n BRACKENRIDGE, San Antonio, Tex. State AA Austin 3 May
 (Robert Alaniz, Bobby May, Robert Salaiz, Louis Houston)
 3:20.3 BAYSIDE, Flushing, N.Y. 3:22.4n HIGHLAND, Albuquerque, N.M.
 3:20.5n NORTH SIDE, Ft. Worth, Tex. 3:22.5 GRANT, Portland, Ore.
 TENAFLY, N.J. 3:22.8 CENTRAL, Tulsa, Okla.
 3:20.9n BOYS, Brooklyn, N.Y. 3:23.8 POLYTECHNIC, Long Beach, Calif.
 3:21.2n ABILENE, Tex. EAST, Wichita, Kans.
 3:22.4 HOBBS, New Mexico

ONE MILE RELAY (eight men)

2:56.8 FREMONT, Los Angeles, Calif. v. Los Angeles Los Angeles 25 Apr
 (Ron Mitchell, Alphonse Butler, Eldridge Woods, Frank Fuentes, Al Gentry, Gil McCulley, Tony Lorick, Larry Dunn)
 2:57.7n DORSEY, Los Angeles, Calif. 2:59.3n LOS ANGELES, Calif.
 2:57.8 MANUAL ARTS, Los Angeles, Calif. n RESEDA, Calif.
 2:59.2 JEFFERSON, Los Angeles, Calif.

only "track & field news" can keep you informed on high school track throughout the nation. and it's just \$3.00 per year. box 296, los altos, calif.

TWO MILE RELAY

7:57.0	EAST, Wichita, Kans. (Lowell Charlton, Bob Holgerson, Bill Stone, Archie San Romani)	Kansas Relays	Lawrence	18 Apr
8:01.1	ROMAN CATHOLIC, Philadelphia, Pa. (Bill Scott, Jim McAndrews, Maurice Cannon, Pat Nicastro)	East Falls Relays	Philadelphia	5 Apr
8:04.4	ST. FRANCIS, Brooklyn, N.Y. (Mike Marco, Walt Dugan, Doug Tynan, Frank Hegarty)	Queens-Iona Relays	New York City	19 Apr
8:05.6n	CHAMINADE, Mineola, N.Y. (Jim Kelly, Bill Lawkins, Paul Lilly, Brian Lambert)	Penn Relays	Philadelphia, Pa.	25 Apr
8:05.7	MT. ST. MICHAELS, New York City, N.Y. (Al Castellano, Dan Sullivan, Joe Cloidt, John Reilly)	Eastern Interscholastic	New York City	14 Jun
8:06.1n	FORDHAM PREP, New York City, N.Y.	8:11.0n	BROOKLYN AUTOMOTIVE, New York City, N.Y.	
8:07.7n	STEPINAC, White Plains, N.Y.		WILSON, Long Beach, Calif.	
8:09.7	SHAWNEE -MISSION, Merriam, Kans.			

FOUR MILE RELAY

18:18.4	EL CAJON, Calif. (Frank Northcutt, Bill Hudson, Wendell Maize, Jack Hudson)	Bellflower Relays	Bellflower	5 Apr
18:31.3n	SANTA ANA, Calif. (Earl Morley, John Arrison, Don Braden, Milford Dahl)	Bellflower Relays	Bellflower	5 Apr

SPRINT MEDLEY RELAY (440, 220, 220, 880)

3:31.5	LEE, Baytown, Tex. (Wayne Porter, Bill Hearon, Lynn Gray, Ken Taylor)	San Antonio Relays	San Antonio	26 Apr
3:34.7	ANDREWS, Tex. (Ronnie Brice, Larry Shoemaker, Tony Cain, Don Linn)	West Texas Relays	Odessa	22 Mar
3:35.0	POLYTECHNIC, Long Beach, Calif. (Ron Alice, Jerry Galbreath, Bill Barbee, Dick Davis)	Bellflower Relays	Bellflower	5 Apr
3:35.5	GRAHAM, Tex.	3:35.5n	NEWPORT HARBOR, Newport Beach, Calif.	

DISTANCE MEDLEY RELAY (440, 880, 1320, Mile)

10:17.1	COMPTON, Calif. (Willie Williams, Art Paz, Bill Crowley, Woody Covington)	Compton Invitational	Compton	6 Jun
10:32.9n	EL CAJON, Calif. (Phil Cornelius, Wendell Maize, Bill Hudson, Jack Hudson)	Compton Invitational	Compton	6 Jun
10:33.0	STEPINAC, White Plains, N.Y. (Charles McGovern, Ed Callaghan, Mike Scully, Tom Dempsey)	Penn Relays	Philadelphia, Pa.	26 Apr
10:33.1n	SANTA ANA, Calif. (Dave Ross, Don Braden, Bob Corey, Milford Dahl)	Compton Invitational	Compton	6 Jun
10:34.1n	WEST CATHOLIC, Philadelphia, Pa. (Carl Wagner, Bob Ward, Walt Thompson, Angelo Siliveri)	Penn Relays	Philadelphia	26 Apr
10:34.2n	ROMAN CATHOLIC, Philadelphia, Pa.	10:41.0	CHAMINADE, Mineola, N.Y.	
10:35.4n	WASHINGTON, New York City, N.Y.	10:41.9	CENTRAL, Tulsa, Oklahoma	
10:38.6n	CLINTON, New York City, N.Y.			

440 SPLITS ON 22 FASTEST MILES

Time	Runner	School	Date	1st Lap	2nd Lap	3rd Lap	4th Lap
4:12.2	DYROL BURLESON	(Cottage Grove, Ore.)	20 Jun 58	63.8	61.1 (2:04.9)	62.4 (3:07.3)	64.9
4:13.2	Burleson		25 Apr 58	61.0	65.0 (2:06.0)	65.2 (3:11.2)	62.0
4:16.1	JIM BOWERS	(DeKalb, Ill.)	25 May 56	64.0	65.0 (2:09.0)	64.0 (3:13.0)	63.1
4:16.2	Burleson		2 May 58	62.0	66.0 (2:08.0)	67.0 (3:15.0)	61.2
4:16.5	Burleson		23 May 58	62.0	64.0 (2:06.0)	66.0 (3:12.0)	64.5
4:16.9	Burleson		5 Apr 58	65.8	64.3 (2:10.1)	65.7 (3:15.8)	61.1
4:17.8n	DEACON JONES	(Boys Town, Nebr.)	18 Jun 54	62.0	67.0 (2:09.0)	68.0 (3:17.0)	60.8
4:17.9	JOHN COOPER	(Tech, Ft. Worth, Tex.)	3 May 56	63.2	68.5 (2:11.7)	65.3 (3:17.0)	60.9
4:18.2	ARCHIE SAN ROMANI	(East, Wichita, Kans.)	5 Jun 58	63.9	66.4 (2:10.3)	67.1 (3:17.4)	60.8
4:18.5n	MAX TRUEX	(Warsaw, Indiana)	18 Jun 54	63.2	65.3 (2:08.5)	64.9 (3:13.4)	65.1
4:18.9	San Romani		31 May 56	66.5	66.7 (2:13.2)	64.4 (3:17.6)	61.3
4:18.9	TOM LARIS	(Washington, New York, N.Y.)	14 Jun 58	61.2	65.1 (2:06.3)	66.9 (3:13.2)	65.7
4:19.1	RON GREGORY	(Sumner, St. Louis, Mo.)	1 Jun 56	64.0	66.0 (2:10.0)	66.0 (3:16.0)	63.1
4:19.2	Gregory		25 May 56	65.5	65.5 (2:11.0)	65.0 (3:16.0)	63.2
4:19.5	TOM SKUTKA	(Morris Hills, Rockaway, NJ)	4 Jun 55	61.3	67.2 (2:08.5)	65.7 (3:14.2)	65.3
4:20.0	CARL JOYCE	(Commerce, Boston, Mass.)	28 Jun 47	65.0	65.0 (2:10.0)	68.0 (3:18.0)	62.0
4:20.0	TOD WHITE	(Newport Harbor, Calif.)	28 May 55	63.0	66.5 (2:19.5)	68.0 (3:17.5)	62.5
4:20.1	RON LARRIEU	(Palo Alto, Calif.)	2 Jun 56	63.5	68.6 (2:12.1)	67.9 (3:20.0)	60.1
4:20.1	San Romani		17 May 58	66.0	64.0 (2:10.0)	67.0 (3:17.0)	63.1
4:20.2	TIM ROELEN	(San Fernando, Calif.)	1 Jun 57	65.0	66.0 (2:11.0)	65.0 (3:16.0)	64.2
4:20.2	BILL DOTSON	(Concordia, Kans.)	18 Apr 58	65.0	65.0 (2:10.0)	65.0 (3:15.0)	65.2
4:20.2	JERRY NELSON	(Faribault, Minn.)	3 Jun 58	65.0	66.0 (2:11.0)	65.2 (3:16.2)	64.0

HIGH SCHOOL RECORDS

Strange as it seems, there are no official national high school track and field records. One set of records, which purports to be national in character but which is not, is known as the "National Interscholastic Records". These records used to be generally regarded as the official U.S. high school records. But in recent years they have lost their meaning and their right to be regarded as national.

The records in question are approved and listed by the National Federation of State High School Athletic Associations. But the National Federation does not recognize all valid marks, but limits its approval to marks made only by schools that are members of one of the state athletic associations which form the National Federation (plus, through some inconsistent reasoning, marks made by schools in Texas, whose state athletic association does not even belong to the National Federation.) Since not all schools belong to one of the state athletic associations the National Federation records are only the records of an organization of limited membership.

That the National Federation records are not truly national in scope is obvious from the list of records

which have not been recognized. The list below includes three records not recognized by the National Federation—the 880, mile relay and two-mile relay. All three marks were made under legal conditions, in big, sanctioned meets. But the two New York Catholic Schools involved do not belong to the New York State Public High School Athletic Association simply because they are not public high schools. So the National Federation refuses to recognize the performances. In so ignoring legitimate marks the National Federation puts itself on record as representing only part of the nation. And its accepted records become only of academic interest.

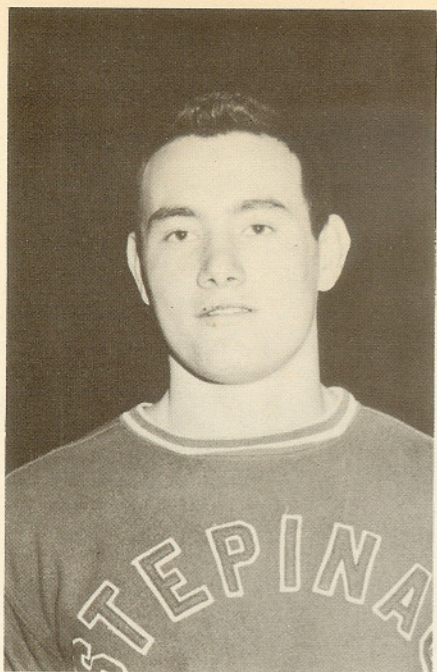
In order to provide a true set of United States high school records a National High School Track & Field Records Board is being organized. Its purpose will be to establish true national records by recognizing all legitimate performances. In the meantime, the marks below are universally recognized to be valid in every respect and are considered as the National High School Records. These records were made by high school athletes in high school competition prior to Dec. 31, 1958.

EVENT	MARK	MADE BY	MEET	SITE	DATE
100	9.4	JESSE OWENS (East Tech., Cleveland, O.)	Chicago Interschol.	Chicago, Ill.	17 Jun 33
220	20.6	JIM JACKSON (Alamecia, Calif.)	N.Coast Section(h)	Berkeley, Calif.	22 May 54
440	46.6	MBL CLIPPER (Muir, Pasadena, Calif.)	Southern Section	El Monte, Calif.	24 May 58
880	1:50.6	DAVE MILLS (Lakewood, O.)	State	Columbus, O.	24 May 58
1 mile	4:13.2	TOM CARROLL (Fordham Prep, N.Y.C., N.Y.)	Catholic League	New York City	3 Jun 57
1200H	13.9	DYROL BURLESON (Cottage Grove, Ore.)	AAU	Bakersfield, Cal.	20 Jun 58
1800H	18.5	GEORGE HEARN (Lower Merion, Ardmore, Pa.)	District	Upper Darby, Pa.	18 May 57
H. J.	6'9 $\frac{1}{2}$ "	CHARLEY TIDWELL (Independence, Kans.)	State	Wichita, Kans.	21 May 55
B. J.	25'4 $\frac{1}{2}$ "	WALT MANGHAM (New Castle, Pa.)	W. Penn. Relays	Mt. Lebanon, Pa.	28 Apr 56
P. V.	15'4 $\frac{1}{2}$ "	MONTE UPSHAW (Piedmont, Calif.)	State	Berkeley, Calif.	29 May 54
S. P.	69'3 $\frac{1}{2}$ "	JIM BREWER (North Phoenix, Ariz.)	Luke-Greenway Inv.	Phoenix, Ariz.	17 May 57
D. T.	184'2 $\frac{3}{4}$ "	DALLAS LONG (North Phoenix, Ariz.)	Luke-Greenway Inv.	Phoenix, Ariz.	16 May 58
J. T.	222'10 $\frac{3}{4}$ "	AL OERTER (Sewanhaka, Floral Park, N.Y.)	Section 8	Amityville, N.Y.	5 Jun 54
440Relay	42.0	JAN SIKORSKY (Ramsay, Mt. Pleasant, Pa.)	W. Penn. League	Mt. Lebanon, Pa.	18 May 57
880 R.	1:26.9	BOYS (Brooklyn, N.Y.)	Penn Relays (HS)	Philadelphia, Pa.	23 Apr 48
Mile R.	3:17.5	(Jim Conaway, Everett Branch, Jim Gathers, Roger Montgomery)	State	Chico, Calif.	2 Jun 56
2-mile R.	7:53.7	JEFFERSON (Los Angeles, Calif.)	Penn Relays (HS)	Philadelphia, Pa.	26 Apr 58
4-mile R.	18:17.7	(Henry Phillips, Willie White, Terry Randall, Joe Batten)	Metro. AAU (HS)	New York, N.Y.	15 Jun 57
Sprint	3:31.5	ST. FRANCIS (Brooklyn, N.Y.)	So. Pac. AAU (HS)	Los Angeles, Cal.	10 Jun 55
Medley R.	10:17.1	(Frank Hegarty, Joe Armstead, Doug Tynan, Les Pinder)	San Antonio Relays	San Antonio, Tex.	26 Apr 58
Distance	10:17.1	ST. FRANCIS (Brooklyn, N.Y.)	Compton Invitational	Compton, Calif.	6 Jun 58
Medley R.		GROSSMONT (Calif.)			
		(John Kershaw, Jim Griswold, Jack Currier, Rene Rogers)			
		LEE (Baytown, Tex.)			
		(Wayne Porter, Bill Hearon, Lynn Gray, Ken Taylor)			
		COMPTON (Calif.)			
		(Willie Williams, Art Paz, Bill Crowley, Woody Covington)			

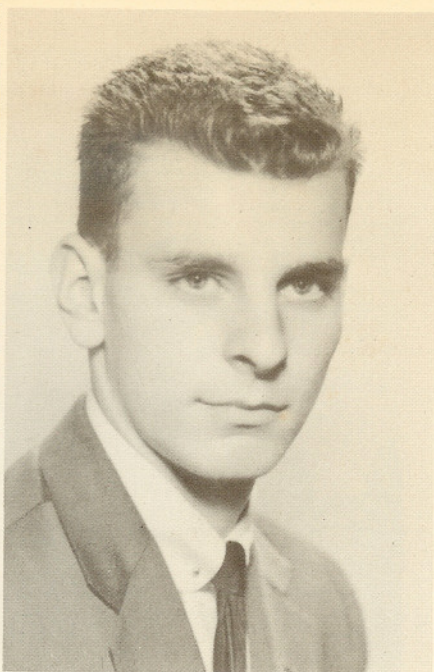
NEW RECORDS



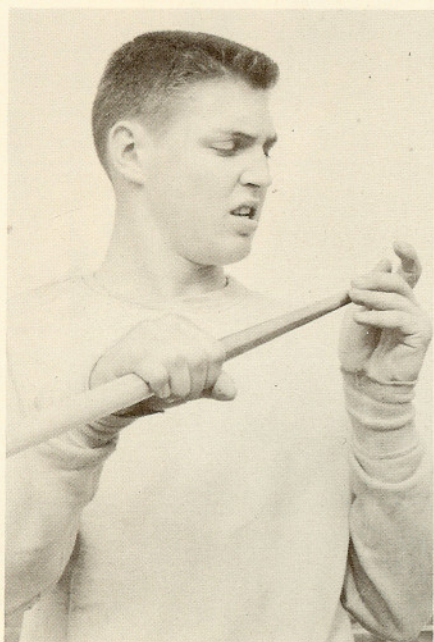
DYROL BURLESON, mile record breaker.



HENRY KORN



TOM LARIS



JERRY SMITH



ROLANDO CRUZ

TRACK & FIELD NEWS

America's only track and field publication. Nationwide high school coverage. Plus world and national news, training articles, action photos, columns, comments, rankings, statistical lists, and many other features. \$3.00 per year. Free samples.

TRACK NEWSLETTER

A twice-monthly supplement to Track & Field News. Mimeographed and speeded by first class mail. News and features. \$6 per year. Free samples.

BOOKS & GUIDES

Ask for our free catalog listing over 100 track and field books, guides, and other coaching aids. Biographies, record books, technique books—the most complete track and field catalog ever published.

FILM RENTALS

Great entertainment, fine for study of technique, are the 1952 and 1956 Olympic Game films. Available in 8mm or 16mm. Write for details.

TRACK TOURS

Groups under the leadership of Track & Field News attend the Olympic Games, British Empire Games, European Championships and other big international track meets. It is the ideal way. Ask to be put on our Track Tours mailing list.

STOP WATCHES

Fine quality imported stop watches are available from \$15 to \$50. Ask for our catalog and school prices.

VITAMINS

Vitamins and food supplements are increasingly recognized as important to the athlete (and non-athlete). The products of one of America's top companies may be purchased through us.

FREE

Stop watches, books and other valuable prizes are easy to win by selling one or more subscriptions to Track & Field News. Your own new subscription counts. Ask for "Win Free Prizes" booklet.

All Available From

TRACK & FIELD NEWS

POST OFFICE BOX 296

• LOS ALTOS, CALIFORNIA

ALL-TIME BEST BY CLASS

Following are what are believed to be the best performances made by high school boys in their freshman, sophomore, junior and senior years of competition. Best performances have been omitted in the 880, high hurdles, low hurdles, discus and javelin for freshmen, not because no mark is available, but because we are

sure a better mark exists than the one available. It is hoped that the reader will call attention to performances where they think a better one exists. No wind marks have been used. Age has not been taken into consideration, as in some cases a senior is younger than a junior, and even younger than a sophomore.

		100 YARD DASH	
Freshman	9.6	Hodges Broussard (Hebert, Beaumont, Tex.)	1955
Sophomore	9.5	Hodges Broussard (Hebert, Beaumont, Tex.)	1956
Junior	9.5	Wendell Davis (Kemp, Bryan, Tex.)	1947
		Jim Caffey (Lyons, LaGrange, Ill.)	1950
Senior	9.4	Jesse Owens (East Tech, Cleveland, O.)	1933
		Jim Jackson (Alameda, Calif.)	1954
		220 YARD DASH	
Freshman	21.3	Hodges Broussard (Hebert, Beaumont, Tex.)	1955
Sophomore	20.8	Hodges Broussard (Hebert, Beaumont, Tex.)	1956
Junior	20.5	Leamon King (Delano, Calif.)	1953
Senior	20.6	Mel Clipper (Muir, Pasadena, Calif.)	1958
		440 YARD DASH	
Freshman	49.5	Wilson Parma (Wilmer-Hutchins, Hutchins, Tex.)	1956
Sophomore	49.0	Ralph Bass (Boys, Brooklyn, N.Y.)	1955
		R. E. Merritt (Andrews, Tex.)	1958
Junior	48.0n	Sherman Miller (Napa, Calif.)	1949
Senior	46.6	Dave Mills (Lakewood, O.)	1958
		880 YARD RUN	
Sophomore	1:54.8n	Bill Curran (Bayonne, N.J.)	1946
Junior	1:54.0n	Al Gentry (Fremont, Los Angeles, Calif.)	1957
Senior	1:50.6	Tom Carroll (Fortham, New York, N.Y.)	1957
		ONE MILE RUN	
Freshman	4:33.6n	Peter Moreno (Bisbee, Arizona)	1958
Sophomore	4:25.7n	Sal Ramirez (El Rancho, Rivera, Calif.)	1958
Junior	4:18.2	Archie San Romani (East, Wichita, Kans.)	1958
Senior	4:12.2n	Dyrol Burleson (Cottage Grove, Ore.)	1958
		120 YARD HIGH HURDLES	
Sophomore	14.5	John Smith (Maine, Des Plaines, Ill.)	1939
Junior	14.0	Milt Campbell (Plainfield, N.J.)	1952
Senior	13.9	George Hearn (Lower Merion, Ardmore, Pa.)	1957
		180 YARD LOW HURDLES	
Sophomore	19.1	Eddie Southern (Sunset, Dallas, Tex.)	1953
Junior	18.9	Junior Howard (San Bernardino, Calif.)	1957
Senior	18.4	Jesse Bradford (Shafter, Calif.)	1957
		HIGH JUMP	
Freshman	6'2"	Bernie Allard (Fresno, Calif.)	1949
Sophomore	6'5½"	Bob Kirby (Banning, Wilmington, Calif.)	1955
Junior	6'9"	Paul Stuber (Bellflower, Calif.)	1958
Senior	6'10⅝"	John Thomas (Rindge Tech, Cambridge, Mass.)	1958
		BROAD JUMP	
Freshman	23'10½"	Junior Tate (Casa Grande, Ariz.)	1953
Sophomore	23'9¼"	Tommy Minter (Gladewater, Tex.)	1956
Junior	24'11"	Don Troutman (Roanoke, La.)	1956
Senior	25'4½"	Oscar Bean (Jefferson, Los Angeles, Calif.)	1956
		POLE VAULT	
Freshman	13'6¼"	Jim Brewer (North Phoenix, Ariz.)	1954
Sophomore	14'2"	Jim Brewer (North Phoenix, Ariz.)	1955
Junior	14'3¾"	Jim Brewer (North Phoenix, Ariz.)	1956
Senior	15'⅝"	Jim Brewer (North Phoenix, Ariz.)	1957
		SHOT PUT	
Freshman	51'6½"	Elwyn Dees (Lorraine, Kans.)	1928
Sophomore	58'3¾"	Elwyn Dees (Lorraine, Kans.)	1929
Junior	61'5"	Dallas Long (North Phoenix, Ariz.)	1957
Senior	69'3¾"	Dallas Long (North Phoenix, Ariz.)	1958
		DISCUS THROW	
Sophomore	172'2⅜"	Leo Glass (Delano, Calif.)	1954
Junior	178'5⅜"	Karl Johnstone (North Phoenix, Ariz.)	1958
Senior	184'2⅜"	Al Oerter (Sewanhaka, Floral Park, N.Y.)	1954
		JAVELIN THROW	
Sophomore	206'3"	Joe Cage (Neville, Monroe, La.)	1958
Junior	215'11"	Glenn Wimmingham (Grants Pass, Ore.)	1958
Senior	222'10¾"	Jan Sikorsky (Ramsay, Mt. Pleasant, Pa.)	1957

ALL-TIME BEST PERFORMERS

100 YARD DASH

- 9.4 JESSE OWENS (East Tech., Cleveland, O.) 1933
 JIM JACKSON (Alameda, Calif.) 1954
 9.5 FRANK WYKOFF (Glendale, Calif.) 1928
 CARL NELSON (Clinton, Ia.) 1933
 HARVEY KELSEY (Phillips, Andover, Mass.) '41
 WENDELL DAVIS (Kemp, Bryan, Tex.) 1947
 JIM CAFFEY (Lyons, La Grange, Ill.) 1950
 HODGES BROUSSARD (Hebert, Beaumont, T.) '56
 BOB POYNTER (Pasadena, Calif.) 1956
 JERRY WHITE (Corcoran, Calif.) 1956
 WILLIE WHITE (Jefferson, Los Angeles, C.) '56
 PRESTON GRIFFIN (Centennial, Compton, C.) '57
 OTIS DRAYTON (Cathedral Latin, Cleveland) '57
 SID GARTON (New Boston, Tex.) 1956
 JIM PUCKETT (Cove, Ore.) 1958
 WIND AIDED
 9.4 BILL WOODHOUSE (Mason City, Ia.) 1955
 ROSCOE COOK (San Diego, Calif.) 1957
 PRESTON GRIFFIN (Centennial, Compton, C.) '57
 * JIM BATES (Manual Arts, Los Angeles) 1958
 JIM PUCKETT (Cove, Ore.) 1958
 JIM THOMAS (North Side, Ft. Worth, Tex.) 1958
 9.5 EDDIE MORRIS (Huntington Beach, Cal.) 1940
 CHARLEY PARKER (Jefferson, San Antonio, T.) '43
 PERRY SAMUELS (Jefferson, San Antonio, T.) '45
 HOWARD BUGBEE (Redondo Beach, Calif.) 1948
 DEAN SMITH (Graham, Tex.) 1949
 J. FRANK DAUGHERTY (Olton, Tex.) 1953
 BILL SWISSHELM (Santa Ana, Calif.) 1953
 REED EPPS (Lincoln, Dallas, Tex.) 1954
 CHARLEY TIDWELL (Independence, Kans.) 1955
 BERT COAN (Pasadena, Tex.) 1957
 JERRY MC CULLOUGH (Poly., Riverside, C.) '57
 PAT GARRETT (Ruston, La.) 1957
 TOM BOSWELL (Arcadia, Calif.) 1957
 (* = rolling start; not wind-aided)

220 YARD DASH

- 20.5 LEAMON KING (Delano, Calif.) 1953
 20.6 MEL CLIPPER (Muir, Pasadena, Calif.) 1958
 20.7 JESSE OWENS (East Tech., Cleveland, O.) 1933
 EDDIE MORRIS (Huntington Beach, Cal.) 1940
 MLT CAMPBELL (Plainfield, N.J.) 1953
 EDDIE SOUTHERN (Sunset, Dallas, Tex.) 1955
 BUTCH SPIEGEL (Jefferson, Richmond, Va.) '56
 JOHN FERNANDEZ (Bishop DuBois, N. Y. C.) '58
 WIND AIDED
 20.3 PRESTON GRIFFIN (Centennial, Compton, C.) '57
 20.5 J. FRANK DAUGHERTY (Olton, Tex.) 1953
 BERT COAN (Pasadena, Tex.) 1957
 n BOBBY STATEN (San Diego, Calif.) 1957
 20.6 EDDIE MORRIS (Huntington Beach, Calif.) 1940
 CHARLEY PARKER (Jefferson, San Antonio, T.) '43
 JIMMY BARBER (North Dallas, Tex.) 1956
 SID GARTON (New Boston, Tex.) 1958
 JIM RICHARDSON (Tyler, Tex.) 1958
 20.7 REED EPPS (Lincoln, Dallas, Tex.) 1954
 NORM JEHLE (Chaffey, Ontario, Calif.) 1957
 PAT GARRETT (Ruston, La.) 1957
 OTIS DRAYTON (Cathedral Latin, Cleveland) '57
 KEN WALDROP (Highland Park, Dallas, T.) 1958

440 YARD DASH

- 46.6 DAVE MILLS (Lakewood, O.) 1958
 46.7 JERRY WHITE (Corcoran, Calif.) 1956
 47.1n OLLIE MATSON (Washington, San Francisco) '48
 47.2 EDDIE SOUTHERN (Sunset, Dallas, Tex.) 1955
 47.5n HENRY DORSEY (Berkeley, Calif.) 1956
 47.6 JOHN QUIGLEY (DeLaSalle, N. Y. C.) 1939
 47.8n JACK YERMAN (Woodland, Calif.) 1956
 n CARLOS TAN (St. Ignatius, San Francisco) 1956
 47.9 ALVIN WILLIAMS (Manual Arts, Los Angeles) '57
 FRED DE WITT (Berkeley, Calif.) 1957
 48.0 GENE COLE (Lancaster, Pa.) 1948
 n SHERMAN MILLER (Napa, Calif.) 1949
 n WALLY WILSON (Lee, Baytown, Tex.) 1955
 48.1 J. W. MASHBURN (Capitol Hill, Okla. City, Ok.) '51
 CHARLES JENKINS (Rindge Tech, Cambridge, Mj) 53
 n CECIL GREEN (Manual Arts, Los Angeles) '57
 n DEAN BALZARETT (Eagle Rock, L. A.) 1957
 MEL CLIPPER (Muir, Pasadena, Calif.) 1958

- 48.2 FRANK SLOMAN (Poly., San Francisco) 1915
 n HERB MOXLEY (Central, Columbus, O.) 1928
 n FRED THOMPSON (Jordan, Los Angeles) 1948
 n DAVE ROSS (California, Whittier, Calif.) 1956
 n J. C. PHILLIPS (Bakersfield, Calif.) 1956
 n RON ROTT (Lodi, Calif.) 1956

880 YARD RUN

- 1:50.6 TOM CARROLL (Fordham, N. Y. C.) 1957
 1:52.3 DON BOWDEN (Lincoln, San Jose, Calif.) 1954
 1:52.5 TED MEREDITH (Mercersburg Academy, Pa) 12
 1:52.7 JIM CERVENY (Mission Bay, San Diego, C) '57
 1:53.5n STEVE PARANYA (Lexington, Mass.) 1957
 1:53.7 CARL MALONEY (Merced, Calif.) 1957
 1:53.8 JERRY SIEBERT (Willits, Calif.) 1956
 n BILL KNOCKE (Narbonne, Lomita, Cal.) 1957
 1:53.9 ALFRED STANLEY (Jefferson, Los Angeles) '50
 1:54.0n LANGE GENTRY (Fremont, Los Angeles) '57
 BILL CROWLEY (Compton, Calif.) 1958
 1:54.1n LOUIE MILLER (Fremont, Los Angeles) '56
 n BRUCE KNAPP (Alhambra, Calif.) 1956
 1:54.2n DAVE KEMP (Hoover, Glendale, Calif.) 1957
 1:54.3 BOBBY MOSSHART (Abilene, Tex.) 1955
 n TOM BROWN (Merced, Calif.) 1956
 1:54.4 ROSS BUSH (Sunset, Dallas, Tex.) 1933
 BOB CHAMBERS (Los Gatos, Calif.) 1944
 n WAYNE LEMONS (Poly., Riverside, C.) 1956
 n DON DORNAN (Coalinga, Calif.) 1957
 1:54.5 HENRY CRYER (DuSable, Chicago, Ill.) 1949
 BOB SHANKLAND (Phoenix, Ariz.) 1955
 1:54.6 JEFF BEAUBIER (Fresno, Calif.) 1957
 1:54.7 RAY WHEELER (Union, N. J.) 1950
 n RAY MC KISSON (Phoenix, Ariz.) 1955
 ERNIE CUNLIFFE (Claremont, Calif.) 1955
 JON DANTE (Union, N. J.) 1958

ONE MILE RUN

- 4:12.2n DYROL BURLESON (Cottage Grove, Ore.) 1958
 4:16.1 JIM BOWERS (DeKalb, Ill.) 1956
 4:17.8n DEACON JONES (Boys Town, Nebr.) 1954
 4:17.9 JOHN COOPER (Tech., Ft. Worth, Tex.) 1958
 4:18.2 ARCHIE SAN ROMANI (East, Wichita, Kans.) '58
 4:18.5n MAX TRUEX (Warsaw, Ind.) 1954
 4:18.9 TOM LARIS (Washington, N. Y., N. Y.) 1958
 4:19.1 RON GREGORY (Sumner, St. Louis, Mo.) 1956
 4:19.5 TOM SKUTKA (Morris Hills, Rockaway, Nj) '55
 4:20.0 CARL JOYCE (Commerce, Boston, Mass.) '47
 TOD WHITE (Newport Harbor, Calif.) 1955
 4:20.1 RON LARRIEU (Palo Alto, Calif.) 1956
 4:20.2 TIM ROELEN (San Fernando, Calif.) 1957
 BILL DOTSON (Concordia, Kans.) 1958
 JERRY NELSON (Faribault, Minn.) 1958
 4:20.4n CHESLEY UNRUH (El Monte, Calif.) 1925
 n RALPH STRAIT (Lincoln, Portland, Ore.) 1957
 4:20.5n GEORGE FULLERTON (Ashland, Ore.) 1946
 n GRADY NEAL (Fullerton, Calif.) 1956
 4:20.7 VIC ZWOLAK (Salesianum, Wilmington, C) 1956
 n BOB MIZINGO (Hoover, San Diego, Cal.) '56.3
 4:21.0 BOB SEAMAN (Reedley, Calif.) 1953
 4:21.2 LOUIE ZAMPERINI (Torrance, Calif.) 1934
 n DANNY SCHWEIKART (Whittier, Calif.) 1953
 n RAY HALE (Downey, Modesto, Calif.) 1955

120 YARD HIGH HURDLES

- 13.9 GEORGE HEARN (Lower Merion, Ardmore, P) '57
 14.0 JOE BATISTE (Tucson, Ariz.) 1939
 JOHN SMITH (Maine, Des Plaines, Ill.) 1941
 HUGH MC ELHENNY (Washington, L. Angeles) '47
 LEB MILLER (Burbank, San Antonio, Tex.) '47
 TOM LEGLER (Roosevelt, Fresno, Calif.) '50
 BILL CURTIS (Waurika, Okla.) 1952
 MILT CAMPBELL (Plainfield, N. J.) 1952
 CHARLEY PIGGEE (Pasadena, Calif.) 1956
 HERB GAINES (Casa Grande, Ariz.) 1958
 BOBBY GILL (Edison, Fresno, Calif.) 1958
 LEON PRAS (Dover, N. J.) 1958
 KEN PRETZER (Roosevelt, Fresno, Cal.) 1958
 WIND AIDED
 13.7 BILL CURTIS (Waurika, Okla.) 1952
 13.9 DON BEARD (Thorndale, Tex.) 1956
 14.0 EDDIE ROBERTS (Stillwater, Okla.) 1953
 EDDIE SOUTHERN (Sunset, Dallas, Tex.) 1955

SONNY OWENS (Fullerton, Calif.) 1956
 CALVIN COOLEY (Hawley, Tex.) 1957
 BILLY WELLS (Casa Grande, Ariz.) 1957
 BILL CREVELING (LaGrange, L.Chas. La.) '58
 DANNY LEE (Mt. Lebanon, Pittsburgh, Pa) '58

180 YARD LOW HURDLES

18.4 JESSE BRADFORD (Shafter, Calif.) 1957
 18.5 CHARLEY TIDWELL (Independence, Mo) 1955
 18.6n HENRY WIEBE (Newton, Kans.) 1955
 18.7 BILL SWISSHELM (Santa Ana, Calif.) 1954
 KEN WEIPPERT (Toms River, N. J.) 1955
 JUNIOR HOWARD (San Bernardino, Calif.) '58
 18.8 ROD PERRY (Coatesville, Pa.) 1954
 MONTE UPSHAW (Piedmont, Calif.) 1954
 G. F. ALSBROOK (Ball, Galveston, Tex.) 1955
 RUSTY WEEKS (Alhambra, Calif.) 1957
 STERLING MORGAN (Snyder, Tex.) 1958
 18.9 STEVE TURNER (Glendale, Calif.) 1950
 DON ARMSTRONG (Manual Arts, L. A. C.) '53
 PAUL LOWE (Centennial, Compton, Cal.) 1955
 WILLIE WHITE (Jefferson, Los Angeles) 1956
 n JIM GREGG (Rosemead, Calif.) 1957
 SAM PERRY (Technical, Oakland, Calif.) 1957
 JIM ASHMORE (Evanston, Ill.) 1958
 JIM BLAIR (Highland, Albuquerque, N. M.) '58
 WIND AIDED
 18.2 BOB DERRICK (Woodward, Okla.) 1953
 n EDDIE ROBERTS (Stillwater, Okla.) 1953
 18.5 JUNIOR HOWARD (San Bernardino, Calif.) '57
 n BOBBY STATEN (San Diego, Calif.) 1957
 18.6 ROY THOMPSON (Lamar, Houston, Tex.) 1953
 18.8n EDDIE SOUTHERN (Sunset, Dallas, Tex.) 1953
 STERLING MORGAN (Snyder, Tex.) 1958
 BENNIE SANKEY (Centennial, Compton, C.) '58
 18.9 TOM LEGLER (Roosevelt, Fresno, Calif.) 1950
 SONNY OWENS (Fullerton, Calif.) 1956
 JACK HOLMAN (California, Whittier, Calif.) '56
 BILLY MARTIN (Phillips, Chicago, Ill.) 1956
 RAY POAGE (Lamar, Houston, Tex.) 1958
 n BILLY HUTLZ (Lincoln, San Diego, C.) 1958
 n GEORGE WILLIAMS (Muir, Pasadena, C.) 1958

HIGH JUMP

6'10 $\frac{1}{2}$ " JOHN THOMAS (Rindge Tech, Cambridge, M.) '58
 6'10 $\frac{1}{2}$ " CHARLEY DUMAS (Centennial, Compton, C.) '55
 6'9 $\frac{3}{4}$ " WALT MANGHAM (New Castle, Pa.) 1956
 6'9" PAUL STUBER (Bellflower, Calif.) 1958
 6'8 $\frac{3}{4}$ " JOE FAUST (Culver City, Calif.) 1958
 HANK WYBORNEY (Pt. Angeles, Wash.) 1958
 6'8" BOB AVANT (Hart, Newhall, Calif.) 1957
 RAY NICKELBERRY (Oxnard, Calif.) 1958
 LEROY JOHNSON (Mishawaka, Ind.) 1957
 6'7 $\frac{3}{4}$ " GIL LA CAVA (Beverly Hills, Calif.) 1938
 6'7 $\frac{3}{4}$ " MARLIN WALLING (El Camino, Sacramento, C.) '58
 6'7" CORNY JOHNSON (Los Angeles, Calif.) 1933
 BILLY STEWART (Torrance, Calif.) 1939
 DICK DAILEY (Hayward, Calif.) 1954
 CORNY FREEMAN (DePorres, Cincinnati, O) '55
 BOB SIMS (Jordan, Los Angeles, Calif.) 1956
 CHARLES SMITH (Washington, Pa.) 1958
 6'6 $\frac{3}{4}$ " JOE BATISTE (Tucson, Ariz.) 1939
 6'6 $\frac{3}{4}$ " DIKE EDDLEMAN (Centralia, Ill.) 1942
 BERNIE ALLARD (Fresno, Calif.) 1952
 LAVERN SMITH (Jefferson, Los Angeles) 1952
 DAVID EWING (Harding, Okla. City, Okla.) '58
 6'6 $\frac{1}{2}$ " J. C. DEVALL (Istrouma, Baton Rouge, La.) '38
 ANGRIS ALEXANDER (Pueblo, Tucson, Ariz.) '57

BROAD JUMP

25'4 $\frac{1}{2}$ " OSCAR BEAN (Jefferson, Los Angeles, C.) 1956
 25'4 $\frac{1}{2}$ " MONTE UPSHAW (Piedmont, Calif.) 1954
 25'3" WILLIE DAVIS (Roosevelt, Los Angeles) 1958
 25'2 $\frac{1}{2}$ " GEORGE BROWN (Jordan, Los Angeles) 1949
 24'11 $\frac{1}{2}$ " JESSE OWENS (East Tech., Cleveland, O.) 1933
 24'11" DON TROUTMAN (Roanoke, La.) 1956
 24'10" SKINNY WHIPPLE (Arkadelphia, Ark.) 1933
 24'9 $\frac{1}{2}$ " LOUIS WATKINS (Jordan, Los Angeles) 1955
 24'8 $\frac{3}{4}$ " BILL HAIRSTON (Central, Columbus, O.) 1951
 24'8 $\frac{3}{4}$ " BILLY BROWN (Baker, La.) 1957
 24'8 $\frac{3}{4}$ " WILLIAM JACKSON (Fremont, Los Angeles) '57
 24'7 $\frac{3}{4}$ " MAC BURTON (Washington, S. F. Francisco) 1957
 24'6 $\frac{3}{4}$ " PRESTON GRIFFIN (Centennial, Compton, C.) '57
 24'6 $\frac{3}{4}$ " BUTLER AVERY (Fortier, New Orleans, La.) '41
 STEVE TURNER (Glendale, Calif.) 1950
 24'6 $\frac{1}{2}$ " BILL JOHNSON (Jefferson, Los Angeles) 1950
 24'6" STEVE ROGERS (Brawley, Calif.) 1958

24'5 $\frac{1}{2}$ " RICHARD WALTON (Fremont, Los Angeles) '56
 24'5" CHARLES LINDSAY (Manual Arts, L. Angeles) '56
 24'4 $\frac{1}{2}$ " EULACE PEACOCK (Union, N. J.) 1933
 24'4 $\frac{1}{2}$ " GODFREY MOORE (Carver, Baltimore, Md) '57
 24'4 $\frac{1}{2}$ " VERLE SORGEN (Poly., Riverside, Calif.) 1949
 24'4" AL WOODS (Coffeyville, Kans.) 1940
 BERT COAN (Pasadena, Tex.) 1957

WIND AIDED

25'5" WILLIE DAVIS (Roosevelt, Los Angeles) 1958

POLE VAULT

15'1 $\frac{1}{2}$ " JIM BREWER (North, Phoenix, Ariz.) 1957
 14'1" JOHN ROSE (Hoover, Glendale, Calif.) 1958
 14'1 $\frac{1}{2}$ " JIM MATEJKA (Sequoia, Redwood City, C.) 1956
 14' ROLANDO CRUZ (Mercersburg Academy, Pa) '58
 13'11 $\frac{1}{2}$ " RON MORRIS (Burrroughs, Burbank, Calif.) 1953
 13'11" CHARLEY BRECK (Santa Barbara, Calif.) '57
 13'10 $\frac{1}{2}$ " HENRY AGUIRRE (Belmont, Los Angeles) 1958
 GEORGE DAVIES (North, Phoenix, Ariz.) 1958
 JOHN LINTA (Mansfield, O.) 1939
 JOE HARRIS (Baton Rouge, La.) 1958
 BAYLOR MAYNARD (Belmont, L. Angeles) 1938
 DON BRAGG (Penns Grove, N. J.) 1953
 13'9" JACK WIDMAN (Bonbonne, Lomita, Calif.) 1950
 13'8 $\frac{3}{4}$ " JERRY HREN (Inglewood, Calif.) 1955
 13'8" DICK CUNNINGHAM (West Phoenix, Ariz.) 1958
 MOE HANHILA (So. Mountain, Phoenix, Ariz) '58
 BOB MC KAY (Inglewood, Calif.) 1954
 JOE ROSE (Hoover, Glendale, Calif.) 1954
 13'7" DICK MC DONALD (Wilson, Long Beach, C.) '50
 NAT FINNEY (Jordan, Los Angeles, Calif.) '55
 TIM HELMS (El Dorado, Placerville, Cal.) 1957
 VOYCE HENDRIX (Riverdale, Calif.) 1957
 TOM COLTON (St. Ignatius, S. Francisco) 1958
 MEL HEIN (Pasadena, Calif.) 1958
 JOHN PENNEL (Coral Gables, Fla.) 1958
 DON SCHAEFER (Oakland, Calif.) 1958

SHOT PUT

69'3 $\frac{1}{2}$ " DALLAS LONG (North Phoenix, Ariz.) 1958
 65'10 $\frac{3}{4}$ " HENRY KORN (Stepinac, White Plains, NY) '58
 64'3 $\frac{1}{2}$ " CLARK BRANSON (Pasadena, Calif.) 1957
 63'9 $\frac{1}{2}$ " HOMER ROBERTSON (Pacific, San Bernardino, Calif.) 1956
 62'7 $\frac{3}{4}$ " RAY LOCKE (Barrington, R.I.) 1950
 62'7 $\frac{3}{4}$ " DAVE DAVIS (Canoga Park, Calif.) 1956
 62'5 $\frac{3}{4}$ " DON VICK (Chaffey, Ontario, Calif.) 1953
 62'4 $\frac{1}{2}$ " MIKE MC KEEVER (Mt. Carmel, L. A. C.) '57
 61'5 $\frac{3}{4}$ " JIM WADE (Grossmont, Calif.) 1957
 61'4 $\frac{3}{4}$ " JACK SLOCOMBE (Millikan, Long Beach, C.) '58
 61'2 $\frac{3}{4}$ " JIM SMITH (Poly., Long Beach, Calif.) 1958
 61'2" MIKE LEWIS (Lincoln, San Francisco) 1957
 60'10 $\frac{3}{4}$ " DAN EVERAGE (Jordan, Los Angeles) 1954
 60'10" DICK VERDON (Hoover, San Diego, Cal.) 1957
 60'9 $\frac{3}{4}$ " LEON PATTERSON (Taft, Calif.) 1952
 60'9 $\frac{3}{4}$ " BILL NIEDER (Lawrence, Kans.) 1952
 60'7 $\frac{3}{4}$ " MIKE PROFIT (Campbell, Calif.) 1957
 60'7" BILL BUCHANAN (Moxee City, Wash.) 1957
 60'6 $\frac{3}{4}$ " HARRISON ROSDAHL (Ridgefield Park, NJ) '58
 60'4 $\frac{3}{4}$ " DICK BRANSON (Grossmont, Calif.) 1954
 60'4 $\frac{1}{2}$ " JOHN CHAMBERLAIN (Poly., Riverside, C.) '58
 60'2 $\frac{3}{4}$ " NEIL PLUMLEY (Medford, Ore.) 1957
 60'2 $\frac{3}{4}$ " BILL CLEVES (Glendale, Calif.) 1957
 60'2" DAVE COATES (Culpepper, Va.) 1955
 59'10 $\frac{1}{2}$ " DARROW HOOPER (N. Side, Ft. Worth, T.) '48

DISCUS THROW

184'2 $\frac{3}{4}$ " AL OERTER (Sewanaha, Floral Park, NY) '54
 184'2 $\frac{3}{4}$ " KEN SCARBROUGH (McDonald, O.) 1956
 179'9 $\frac{3}{4}$ " DEWEY BOHLING (Highland, Albuquerque, NM) '55
 179'6" WAYNE CROW (Corcoran, Calif.) 1956
 179'2 $\frac{3}{4}$ " DALLAS LONG (North Phoenix, Ariz.) 1958
 178'5 $\frac{3}{4}$ " CLYDE GARDNER (Newton, Ia.) 1949
 177'5" KARL JOHNSTONE (North Phoenix, Ariz.) '58
 176'9" LEON PATTERSON (Taft, Calif.) 1952
 176'9" LEO GLASS (Delano, Calif.) 1955
 176'7 $\frac{3}{4}$ " DARROW HOOPER (N. Side, Ft. Worth, Tex.) '49
 176'6" JIM BURKE (Amphitheater, Tucson, Ariz.) 1957
 176'5 $\frac{3}{4}$ " LYLE CROW (Porterville, Calif.) 1953
 176'4 $\frac{3}{4}$ " BYRL THOMPSON (Southwest, Minneapolis) '45
 176'3" BILL FIELDS (Parkersburg, W. Va.) 1957
 175'11 $\frac{1}{2}$ " BOB VERNON (Oberlin, Kans.) 1958
 175'5 $\frac{3}{4}$ " DICK WINTERBAUER (Arlington Hts., Ill.) '54
 174'8 $\frac{3}{4}$ " JIMMY BROWN (McCallum, Austin, Tex.) 1958
 174'4 $\frac{3}{4}$ " RAFER JOHNSON (Kingsburg, Calif.) 1954
 174'2 $\frac{3}{4}$ " DOUG COTTERMAN (Mentor, O.) 1957
 174'2 $\frac{3}{4}$ " HOWARD DEBUS (Lincoln, Nebr.) 1940



BRACKENRIDGE'S 440 relay team--Louis Houston, Roger Gose, Julius Glosson, Robert Alaniz.



ST. FRANCIS' mile relay recordmen--Frank Hegarty, Joseph Armstead,
Coach Jim McHugh, Doug Tynan, Les Pinder.

173'10 $\frac{1}{2}$ " GENE COTTERMAN(Lanier, West Alexandria, O.) 1955
 173'10" GENE STRATHMAN(Brush, S. Euclid, O.)1949
 173'4 $\frac{1}{2}$ " CARL VEREEN (Miami, Fla.) 1953
 173'2 $\frac{3}{4}$ " DON BELL (Alameda, Calif.) 1957
 173" JOE IRVIN (Amarillo, Tex.) 1954

JAVELIN THROW

222'10 $\frac{3}{4}$ " JAN SIKORSKY(Ramsay, Mt.Pleasant, Pa.)1957
 220'1" BOB PEOPLES(Classen, Okla.City,Oida.)1937
 217'9 $\frac{1}{2}$ " JERRY SMITH(Junction City, Kans.) 1956
 215'11"
 215'11"
 215'11"
 215'11"
 213'6" GARY STENSLUND(Douglas, PortlandOre.)'58
 213'6" D.C. MILLS (Medford, Ore.) 1951
 213'5" WAYNE MC DONNEL(Haddon Heights,NJ)'58
 211'8 $\frac{1}{2}$ " NICK KOVALAKIDES(Princeton, N. J.) 1957
 211'7 $\frac{1}{2}$ " LOU ENOS (Montclair, N. J.) 1955
 211'1" CHUCK MISSFELDT(Litwaukie, Ore.) 1948
 210'4 $\frac{1}{2}$ " HARDY SPURGEON (Marshfield, CoosBay,Or)'58
 209'7" DICK CLARK(Custer Cnty, Miles City, Mont.)'58
 209'3 $\frac{1}{2}$ " THERLO CONNER (Hayden, Topeka, Kans.)'56
 209'2 $\frac{1}{2}$ " BOB SCHMIDT (Milburay, N. J.) 1956
 207'11" BOYD PORCH (Clayton, N. J.) 1943
 207'4 $\frac{1}{2}$ " KEN BARBER (McPherson, Kans.) 1956
 206'10" NICK VUKMANIC(Jefferson-Morgan, Jefferson, Pa.) 1936
 206'9" ROY BELLIVEAU (Springfield, N. J.) 1948
 206'8 $\frac{1}{2}$ " BOB BATDORF(Mercersburg Academy, Pa.)58
 206'8" TO: 1 BONK (New Britain, Conn.) 1957
 206'7 $\frac{1}{2}$ " VITO CETTA (Montclair, N. J.) 1956
 206'3" JOE CAGE (Newville, Monroe, La.) 1958
 205'5" DOUG GRAYDON (Central, Little Rock, Ark)'28
 205'2 $\frac{3}{4}$ " LEROY JONES(Wassookag, Dexter, Me.)'36
 205'1 $\frac{1}{2}$ " KARL MAYER (Asbury Park, N. J.) 1956

400 YARD RELAY

42.0 BOYS Brooklyn, N. Y., 1948
 42.2 ARLINGTON HEIGHTS, Ft. Worth, Tex., 1956
 B AKERSFIELD, Calif., 1958
 42.3 NORTH, Des Moines, Ia., 1948
 n NORTH SIDE, Ft. Worth, Tex., 1958
 42.4 GLENDALE, Calif., 1928
 n HIGHLAND PARK, Dallas, Tex., 1956
 n ANDREWS, Texas, 1958
 n DELANO, Calif, 1958
 42.5 ABILENE, Tex., 1954
 n PASADENA, Tex. 1958
 n PASCHAL, Ft. Worth, Tex., 1958
 42.6 LAMAR, Houston, Tex., 1955
 n PASADENA, Tex., 1956
 ROLLING START
 42.0 BRACKENRIDGE, San Antonio, Tex., 1958

880 YARD RELAY

1:25.9 JEFFERSON, Los Angeles, Calif., 1956
 1:26.8n BERKELEY, Calif., 1956
 1:26.9 FREMONT, Los Angeles, 1957
 1:27.0 BERKELEY, Calif., 1957
 1:27.1n DORSEY, Los Angeles, Calif., 1956
 CENTENNIAL, Compton, Calif., 1957
 1:27.2 JEFFERSON, Los Angeles, Calif., 1955
 n MANUAL ARTS, Los Angeles, Calif., 1957
 n SAN DIEGO, Calif., 1957
 1:27.3 CHAFFEY, Ontario, Calif., 1957
 n POLYTECHNIC, Long Beach, Calif., 1957
 n DORSEY, Los Angeles, Calif. 1957
 n JEFFERSON, Los Angeles, Calif., 1957
 1:27.5n CENTENNIAL, Compton, Calif., 1955
 1:27.6 NORTH, Des Moines, Ia., 1948
 MANUAL ARTS, Los Angeles, 1953

ONE MILE RELAY

3:17.5 ST. FRANCIS, Brooklyn, N. Y., 1956
 3:17.9 LEE, Baytown, Tex., 1955
 3:18.2 ANDREWS, Texas, 1958
 3:18.5n LAMAR, Houston, Tex., 1958
 3:18.7n NORTH SIDE, Ft. Worth, Tex., 1955
 3:18.8n LEE, Baytown, Tex., 1958
 3:19.0 NORTH SIDE, Ft. Wayne, Ind., 1957
 3:19.2 JACKSON, Jamaica, N. Y., 1957
 3:19.6n AMARILLO, Tex., 1955
 3:19.8 LEE, Baytown, Tex., 1954
 3:19.8 NORTH SIDE, Ft. Worth, Tex., 1956
 3:20.0n MILLER, Corpus Christi, Tex., 1956
 3:20.2 WILSON, Long Beach, Calif., 1957
 3:20.2n BRACKENRIDGE, San Antonio, Tex., 1958
 3:20.3 BAYSIDE, Flushing, N. Y., 1958

ONE MILE RELAY (eight men)

2:54.6 MANUAL ARTS, Los Angeles, Calif, 1957
 2:55.0n FREMONT, Los Angeles, Calif., 1957
 2:56.3 JEFFERSON, Los Angeles, Calif., 1956
 2:56.5 FREMONT, Los Angeles, Calif., 1956
 2:56.8 FREMONT, Los Angeles, Calif., 1958

TWO MILE RELAY

7:53.7 ST. FRANCIS, Brooklyn, N. Y., 1957
 7:54.6 MORNINGSIDE, Inglewood, Calif., 1957
 7:56.0 BELLFLOWER, Calif., 1953
 7:56.5 ST. FRANCIS, Brooklyn, N. Y., 1954
 7:56.6n COMPTON, Calif., 1953
 7:57.0 EAST, Wichita, Kans., 1958
 7:58.5n DOWNEY, Calif., 1953
 7:58.8 FRESNO, Calif., 1957
 8:00.2n WILSON, Long Beach, Calif., 1957
 8:00.7n MT. ST. MICHAEL, New York, N. Y., 1954
 8:01.1 ROMAN CATHOLIC, Philadelphia, Pa., 1958
 8:03.3 LOUGHLIN, Brooklyn, N. Y., 1940
 8:03.8 ST. FRANCIS, Brooklyn, N. Y., 1956
 8:03.9 NORTH, DES MOINES, Ia., 1956
 8:04.1 ST. JOHNS, Brooklyn, N. Y., 1955

FOUR MILE RELAY

18:17.7 GROSSMONT, Calif., 1955
 18:17.9 WEST CATHOLIC, Philadelphia, Pa., 1955
 18:18.4 EL CAJON, Calif., 1958
 18:31.3n SANTA ANA, Calif., 1958
 18:39.7n NEWPORT HARBOR, Newport Beach, Calif., 55
 18:40.9 MIRA COSTA, Manhattan Beach, Calif., 1957
 18:42.2n WHITTIER, Calif., 1955

SPRINT MEDLEY RELAY

3:31.5 LEE, Baytown, Tex., 1958
 3:31.9 WILSON, Long Beach, Calif., 1957
 3:32.0 LEE, Baytown, Tex., 1957
 3:33.2 WILSON, Long Beach, Calif., 1950
 3:33.3n GLENDALE, Calif., 1950
 3:33.4n MORNINGSIDE, Inglewood, Calif., 1957
 n POLYTECHNIC, Long Beach, Calif., 1957
 3:33.7 NORTH DES MOINES, Ia., 1954
 3:34.3 CENTRAL, Oklahoma City, Okla., 1944
 3:34.6 BELLFLOWER, Calif., 1954
 CHOWCHILLA, Calif., 1957
 3:34.7 MILLER, Corpus Christi, Tex., 1956
 ANDREWS, Tex., 1958
 3:34.8n BELLFLOWER, Calif., 1957
 3:35.0 ABILENE, Tex., 1955
 POLYTECHNIC, Long Beach, Calif., 1958

DISTANCE MEDLEY RELAY

10:17.1 COMPTON, Calif., 1958
 10:32.9n EL CAJON, Calif., 1958
 10:33.0 PALO ALTO, Calif., 1956
 STEPANAC, White Plains, N. Y., 1958
 10:33.1n EL CERRITO, Calif., 1956
 n SANTA ANA, Calif., 1958
 10:34.1n WEST CATHOLIC, Philadelphia, Pa., 1958
 10:34.2n ROMAN CATHOLIC, Philadelphia, Pa., 1958
 10:35.1 COMPTON, Calif., 1952
 10:35.4n WASHINGTON, New York, N. Y., 1956
 10:35.8 FRESNO, Calif., 1957
 10:36.0 MORNINGSIDE, Inglewood, Calif., 1957
 10:36.6 FULLERTON, Calif., 1956
 10:37.7 COMPTON, Calif., 1951
 10:38.0n EL RANCHO, Rivera, Calif., 1956

120 YARD HIGH HURDLES (42")

14.1m JOE BATISTE (Tucson, Ariz.) 1939
 MILT CAMPBELL (Plainfield, N. J.) 1953
 14.3m BILL CURTIS (Waurika, Okla.) 1952
 14.4m WILLIE STEVENS (Phillips, Chicago, Ill.) '51
 14.5 LEROY KIRKPATRICK (Central, El Centro, C)34
 14.6n HUGH MC ELHENNY (Washington, L. A., C.)47
 LARRY GULFORD (Santa Clara, Calif.) 1957
 m = made at 110 meters (120.3 yards)

220 YARD LOW HURDLES

23.1n DALE MESSER (Lemoore, Calif.), 1956
 23.3m RON FRAZIER (Van Nuys, Calif.), 1945
 23.3 EDDIE ROBERTS (Stillwater, Okla.), 1952
 23.4 LEROY KIRKPATRICK (Central, El Centro, C)34
 AL LAWRENCE (Glendale, Calif.), 1943
 n GEORGE SMITH (Lemoore, Calif.) 1956

23.5 AMSDEN OLIVER (Roosevelt, Dayton, O.) 1931
 MAX MINOR (Tahoka, Tex.), 1940
 n STEVE TURNER (Glendale, Calif.) 1955
 CHARLEY TIDWELL (Independence, Kans.) 1955

WIND AIDED

23.0m EDDIE ROBERTS (Stillwater, Okla.) 1952
 m = 200m (216.72 yards) plus .1 second

DISC THROW (4 lb. 6.4 oz.)

175'8" ARCHIE HARRIS (Ocean City, N.J.) 1937
 162' JIM MARSHALL (East, Columbus, O.) 1956
 160'2" JACK EGAN (Balboa, San Francisco, Cal.) 1954
 160'3" MIKE LEWIS (Lincoln, San Francisco, C.) 1957
 156'11¹/₂" SIM INESS (Tulare, Calif.) 1946
 155'8³/₄" BOB VERNON (Oberlin, Kans.) 1957
 154'9" EDSEL WIBBELS (Wolbach, Nehr.) 1937
 154'6¹/₂" J. C. PETTY (Kaufman, Tex.) 1931
 153'10¹/₂" DAVE DAVIS (Canoga Park, Calif.) 1956
 153'5⁵/₈" GENE COTTERMAN (Lanier, West
 Alexandria, O.) 1955

100 METER DASH

10.4y VERNON BLENKIRON (Compton, Calif.) 1921
 10.4 EDDIE MORRIS (Huntington Beach, Calif.) 1940
 n PRESTON GRIFFIN (Centennial, Compton, C.) 1957
 10.5 BUDDY YOUNG (Phillips, Chicago, Ill.) 1943
 PERRY SAMUELS (Jefferson, San Antonio, T.) 1945
 n JIM GOLLDAY (Phillips, Chicago, Ill.) 1950
 MLT CAMPBELL (Plainfield, N.J.) 1953
 y = made at 110 yards (100.58 meters)

200 METER DASH

20.8 FRANK WYKOFF (Glendale, Calif.) 1926
 21.0n FRANK LOMBARDI (Los Angeles, Calif.) 1928
 BOB RODENKIRCHEN (Dickinson, Jersey City,
 N.J.) 1936
 n MEL PATTON (University, Los Angeles) 1943

400 METER DASH

47.3n SHERMAN MILLER (Napa, Calif.) 1950
 48.0n RAY JOHNSON (Medford, Ore.) 1941

800 METER RUN

1:49.2n TOM CARROLL (Fordham, New York, NY) 57
 1:51.9 TED MEREDITH (Mercersburg Academy, P) 12
 1:52.5n MARV STURGEON (Cannelton, Ind.) 1956
 1:55.1 JOHN WOODRUFF (Connellsville, Pa.) 1935

1500 METER RUN

3:59.4n JEROME WALTERS (Compton, Calif.) 1948

4:00.0 LOUIE ZAMPERINI (Torrance, Calif.) 1934
 4:01.3 ROLAND SINK (South Pasadena, Calif.) 1943
 4:01.4n RUDY SIMMS (Clinton, New York, N.Y.) 1943
 4:04.1 JACK DIANETTI (East Rochester, N.Y.) 1945

TWO MILE RUN

9:21.4 TOM LARIS (Washington, New York, N.Y.) '58
 9:30.7n BOB BUCHANAN (Stillwater, Okla.) 1953
 9:37.0 RON GREGORY (Sumner, St. Louis, Mo.) 1956
 9:39.0 RON LARRIEU (Palo Alto, Calif.) 1956
 9:44.3 BILL COX (Edison Tech., Rochester, N.Y.) '25
 9:44.4n JOHN NORTHWAY (Palo Alto, Calif.) 1958
 9:44.5n* AL COLLINS (University, Los Angeles, C.) '52
 9:45.7 BILL MARKS (Wilson, Long Beach, Cal.) 1957
 * = made in 5000 meters race

440 YARD HURDLES

53.4n EDDIE SOUTHERN (Sunset, Dallas, Tex.) '55
 53.9 JIM BROOKS (Mt. Diablo, Concord, Calif.) 1955

DECATHLON

7238 MLT CAMPBELL (Plainfield, N.J.) 1953
 6456 BOB MATHIAS (Tulare, Calif.) 1948
 6121 DIXON FARMER (Miramonte, Orinda, C.) 1958
 6118 AUBREY LEWIS (Montclair, N.J.) 1954
 5874 RAFAER JOHNSON (Kingsburg, Calif.) 1954

SHOT PUT (16 lb.)

61'1¹/₂" DALLAS LONG (North Phoenix, Ariz.) 1958
 53'4³/₄" MIKE MC KEEVER (Mt. Carmel, L. Angeles) '57
 52'10" HOMER ROBERTSON (Pacific, San Bernardino,
 Calif.) 1956
 52'9¹/₂" DON VICK (Chaffey, Ontario, Calif.) 1953
 51'8³/₄" HENRY KORN (Stepinac, White Plains, N.Y.) '58
 51'4¹/₂" JIM MARSHALL (East, Columbus, O.) 1956
 51'4" MIKE LEWIS (Lincoln, San Francisco, C.) '57
 51'1¹/₂" DAVE DAVIS (Canoga Park, Los Angeles) 1956
 50'11" BILL CLEVES (Glendale, Calif.) 1957
 50'10" PAUL LASPINA (Wickliffe, O.) 1958

HOP-STEP-JUMP

49'7¹/₄" BILLY BROWN (Baker, La.) 1937
 49'1" SID BOWMAN (Hammond, La.) 1928
 48'5³/₄" DON TROUTMAN (Roanoke, La.) 1956
 48'3" DUD WILKINS (Crowley, La.) 1932
 47'11" PINKY ROHM (Fortier, New Orleans, La.) 1933
 47'3" RALPH NEWELL (DeQuincy, La.) 1930
 47'2" BOB BIXLER (Broken Arrow, Okla.) 1938
 47'1¹/₂" SHERMAN LANDERS (Oregon, Ill.) 1915
 47'3" KENT FLOERKE (Rosedale, Kans. City, K.) 54

LIGHTWEIGHT RECORDS

It has been suggested that the Class B records for the high schools of the Southern Section of the C. I. F. (California Interscholastic Federation) will be of interest. The C. I. F. is divided into eight sections. The Southern Section has for years had a very successful program for the smaller athletes. Whereas Class B in most states means schools of lesser enrollment, it is entirely different in Southern California. Athletes are classified by height, weight and age. Thus the boy who is young and growing and is not good enough to compete on the varsity is permitted to compete in a class where others of similar size are classed. A Class C division is for still smaller boys. Neither Class B nor Class C athletes compete on a statewide basis. Such men as Mel Patton, Mal Whitfield and Parry O'Brien, all world record breakers, and many other future stars, were once Class B competitors.

SOUTHERN SECTION CLASS B RECORDS

100	9.5w	TOM BOSWELL	Arcadia	1957
	9.7	ROSCOE COOK	San Diego	1956
220	20.8w	TOM BOSWELL	Arcadia	1957
	21.0	ROSCOE COOK	San Diego	1956
660	1:20.8	JAY DUNN	Chula Vista	1958
1320	3:10.6	TOM LILE	Antelope Valley, Lancaster	1956
70 HH	8.7	JIM GREGG	Rosemead	1956
		TERRY DE WITT	Wilson, Long Beach	1956
		GARY LOSETTE	Excelsior, Norwalk	1956
		BILLY COATES	Compton	1957
		RUSTY WEEKS	Alhambra	1956
120 LH	12.6	SAN DIEGO	(110, 110, 220, 220)	1956
660 Relay	1:06.3	EUGENE ALLEN	Polytechnic, Long Beach	1956
Broad Jump	23'8 ¹ / ₂ "	ROGER BEYER	Chaffey, Ontario	1957
High Jump	6'2 ¹ / ₂ "	BOB JOHNSON	Glendale	1957
Pole Vault	13'6 ³ / ₄ "	TOM FALLANTE	Leuzinger, Inglewood	1956
Shot (10 lb.)	58'3 ³ / ₄ "			

ALL-TIME BEST PERFORMANCES

(A list of "Best Performances" includes more than one mark per athlete if the additional marks are good enough to make the list. On the other hand, a list of "Best Performers" gives only the one best mark of each athlete. In many ways the Best Performance List is a truer indication of an athlete's worth than the Best Performers list, showing as it does a number of fine marks.)

100 YARD DASH

9.4	JESSE OWENS (East Technical, Cleveland, O.)	Chicago Interscholastic	Chicago, Ill.	17 Jun 33
	JIM JACKSON (Alameda, Calif.)	North Coast Section (h)	Berkeley	22 May 54
9.5	FRANK WYKOFF (Glendale, Calif.)	v. South Pasadena	Glendale	16 Mar 28
	CARL NELSON (Clinton, Ia.)	Nat. Interscholastic warmup	Clinton	13 Jun 33
	HARVEY KELSEY (Phillips, Andover, Mass.)	v. Dart. & Harv. Frosh	Andover	10 May 41
	WENDELL DAVIS (Kemp, Bryan, Tex.)	National Negro	St. Louis, Mo.	10 May 47
	JIM CAFFEY (Lyons, LaGrange, Ill.)	District	Riverside	13 May 50
	HODGES BROUSSARD (Hebert, Beaumont, Tex.)	District 3	Houston	14 Apr 56
	BOB POYNTER (Pasadena, Calif.)	v. Muir	Pasadena	20 Apr 56
	AL PHILLIPS (Montclair, N.J.)	Newark Invitational	Newark	5 May 56
	JERRY WHITE (Corcoran, Calif.)	Divisional	Dimuba	19 May 56
	WILLIE WHITE (Jefferson, Los Angeles, Calif.)	State	Chico	2 Jun 56
	PRESTON GRIFFIN (Centennial, Compton, Calif.)	Compton Cup	Compton	13 Apr 57
	Griffin	Bay League Preliminaries	Manhattan Beach	26 Apr 57
	Griffin	Bay League	Manhattan Beach	3 May 57
	Griffin	Divisional	Compton	18 May 57
	OTIS DRAYTON (Cathedral Latin, Cleveland, O.)	AAU Development	Pittsburgh	4 Jul 57
	SIDNEY GARTON (New Boston, Tex.)	Cowtown Relays (h)	Fort Worth	5 Apr 58
	JIM PUCKETT (Cove, Ore.)	Pilot Rock Relays	Pilot Rock	19 Apr 58
	Puckett	East Oregon Invitational	La Grande	2 May 58

220 YARD DASH

20.5	LEAMON KING (Delano, Calif.)	Central Section	Tulare	23 May 53
20.6	MEL CLIPPER (Muir, Pasadena, Calif.)	Southern Section	El Monte	24 May 58
20.7	JESSE OWENS (East Technical, Cleveland, O.)	Chicago Interscholastic	Chicago, Ill.	17 Jun 33
	EDDIE MORRIS (Huntington Beach, Calif.)	Divisional	Huntington Beach	11 May 40
	MILT CAMPBELL (Plainfield, N.J.)	New Jersey AAU	Elizabeth	20 Jun 53
	EDDIE SOUTHERN (Sunset, Dallas, Tex.)	State	Austin	7 May 55
	BUTCH SPIEGEL (Jefferson, Richmond, Va.)	Central District	Hopewell	21 May 56
	Clipper	State	Long Beach	31 May 58
	JOHN FERNANDEZ (Bishop DuBois, New York, N.Y.)	Metropolitan AAU Junior	New York City	29 Jun 58
20.8	AL ROBINSON (Mercersburg, Pa.)	Penn St. Interscholastic	University Park	2 May 13
	ELMER HELBRING (North, Ft. Worth, Tex.)	State	Austin	6 May 33
	JOHN BRADLEY (Hoover, Glendale, Calif.)	Divisional	Glendale	15 May 48
	BILL SWISSHELM (Santa Ana, Calif.)	Southern Counties (h)	Huntington Beach	13 Mar 54
	JIM JACKSON (Alameda, Calif.)	Pacific AAU	Stockton	5 Jun 54
	HODGES BROUSSARD (Hebert, Beaumont, Tex.)	State Negro	Prairie View	28 Apr 56
	BOB POYNTER (Pasadena, Calif.)	Divisional	Santa Monica	12 May 56
	BERT COAN (Pasadena, Tex.)	Pasadena Relays	Pasadena	26 Apr 57
	STAN RHODES (Hoover, Glendale, Calif.)	Southern Counties (h)	Huntington Beach	8 Mar 58
	Clipper	Pasadena Games	Pasadena	29 Mar 58
	SIDNEY GARTON (New Boston, Tex.)	State (h)	Austin	2 May 58
	Garton	State	Austin	3 May 58
	Fernandez	Catholic Championships	New York City	1 Jun 58

440 YARD DASH

46.6	DAVE MILLS (Lakewood, O.)	State	Columbus	24 May 58
46.7	JERRY WHITE (Corcoran, Calif.)	State	Chico	2 Jun 56
46.8	Mills	District	Cleveland	17 May 58
47.1n	OLLIE MATSON (Washington, San Francisco, Calif.)	Pacific AAU	Berkeley	5 Jun 48
47.2	EDDIE SOUTHERN (Sunset, Dallas, Tex.)	State	Austin	7 May 55
n	White	Central California AAU	Sanger	9 Jun 56
47.3n	White	Kern Relays	Bakersfield	21 Apr 56
	White	Division	Dimuba	19 May 56
47.4	Southern	State (h)	Austin	6 May 55
n	HENRY DORSEY (Berkeley, Calif.)	State	Chico	2 Jun 56
47.6	JOHN QUIGLEY (De La Salle, New York, N.Y.)	Princeton Invitational	Princeton, N.J.	17 Jun 39
47.8	White	Central Section	Bakersfield	26 May 56
	Mills	Miami Univ. Invitational	Oxford	10 May 58
n	JACK YERMAN (Woodland, Calif.)	State	Chico	2 Jun 56
n	CARLOS TAN (St. Ignatius, San Francisco, Calif.)	State	Chico	2 Jun 56

880 YARD RUN

1:50.6	TOM CARROLL (Fordham Prep, New York City, N.Y.)	Catholic League	New York City	3 Jun 57
1:51.6	Carroll	Eastern Interscholastic	New York City	8 Jun 57
1:52.2	Carroll	AAU (h)	Dayton, O.	21 Jun 57
1:52.3	DON BOWDEN (Lincoln, San Jose, Calif.)	North Coast Section	Berkeley	22 May 54
1:52.4n	Carroll	Metropolitan AAU	New York City	15 Jun 57
1:52.5	TED MEREDITH (Mercersburg Academy, Pa.)	Olympic Games	Stockholm, Sweden	12 Jul 12
1:52.7	JIM CERVENY (Mission Bay, San Diego, Calif.)	State	Berkeley	1 Jun 57
1:52.9	Bowden	State	Berkeley	29 May 54
1:53.2	Bowden	Peninsula Athletic League	Sunnyvale	7 May 54
n	Carroll	AAU	Dayton, O.	22 Jun 57
1:53.3	Cerveny	Southern Section	Ontario	25 May 57
1:53.5n	STEVE PARANYA (Lexington, Mass.)	AAU (h)	Dayton, O.	21 Jun 57
1:53.7	CARL MALONEY (Merced, Calif.)	Central Section	Sanger	25 May 57
1:53.8	JERRY SIEBERT (Willits, Calif.)	State	Chico	2 Jun 56
n	BILL KNOCKE (Narbonne, Lomita, Calif.)	State	Berkeley	1 Jun 57

ONE MILE RUN

4:12.2	DYROL BURLESON (Cottage Grove, Ore.)	AAU	Bakersfield, Cal.	20 Jun 58
4:13.2	Burleson	Corvallis Relays	Corvallis	25 Apr 58
4:16.1	JIM BOWERS (DeKalb, Ill.)	No. Illinois Conference	Sterling	25 May 56
4:16.2	Burleson	Quadrangular	Cottage Grove	2 May 58
4:16.5	Burleson	District	Springfield	23 May 58
4:16.9	Burleson	Willamette Relays	Salem	5 Apr 58
4:17.8n	DEACON JONES (Boys Town, Nebr.)	AAU	St. Louis, Mo.	18 Jun 54
4:17.9	JOHN COOPER (Technical, Ft. Worth, Tex.)	State	Austin	5 May 58
4:18.2	ARCHIE SAN ROMANI (East, Wichita, Kans.)	Junior Olympics	Lawrence	5 Jun 58
4:18.5n	MAX TRUEX (Warsaw, Ind.)	AAU	St. Louis, Mo.	18 Jun 54
4:18.9	San Romani	Missouri Valley AAU	Merriam	31 May 58
	TOM LARIS (Washington, New York City, N.Y.)	Eastern Interscholastic	New York City	14 Jun 58
4:19.1	RON GREGORY (Sumner, St. Louis, Mo.)	Olympic Fund	St. Louis	1 Jun 56
4:19.2	Gregory	Field Day	St. Louis	25 May 56
4:19.5	TOM SKUTKA (Morris Hills, Rockaway, N.J.)	State	New Brunswick	4 Jun 55

120 YARD HIGH HURDLES

13.9	GEORGE HEARN (Lower Merion, Ardmore, Pa.)	District	Upper Darby	18 May 57
14.0	JOE BATISTE (Tucson, Ariz.)	State	Tucson	6 May 39
	JOHN SMITH (Maine, Des Plaines, Ill.)	Ohio AAU	Columbus, O.	31 May 41
	HUGH MC ELHENNY (Washington, Los Angeles, Cal.)	v. Jefferson	Los Angeles	25 Apr 47
	LEE MILLER (Burbank, San Antonio, Tex.)	State (h)	Austin	2 May 47
	TOM LEGLER (Roosevelt, Fresno, Calif.)	v. Fresno	Fresno	27 Mar 50
	BILL CURTIS (Waurika, Okla.)	Regional	Duncan	26 Apr 52
	MLT CAMPBELL (Plainfield, N.J.)	State 4	Montclair	7 Jun 52
	CHARLEY PIGGEE (Pasadena, Calif.)	Southern Section	Inglewood	26 May 56
	HERB GAINES (Casa Grande, Ariz.)	Miami Invitational	Miami	19 Apr 58
	KEN PRETZER (Roosevelt, Fresno, Calif.)	City	Fresno	25 Apr 58
	BOBBY GILL (Edison, Fresno, Calif.)	Central Section	Bakersfield	24 May 58
	LEON PRAS (Dover, N.J.)	Country Championships	Morristown	31 May 58

180 YARD LOW HURDLES

18.4	JESSE BRADFORD (Shafer, Calif.)	S. Sequoia League	Shafer	4 May 57
18.5	CHARLEY TIDWELL (Independence, Kans.)	State	Wichita	21 May 55
18.6n	HENRY WIEBE (Newton, Kans.)	State	Wichita	21 May 55
18.7	BILL SWISSHELM (Santa Ana, Calif.)	Compton Cup	Compton	24 Apr 54
	KEN WEPPERT (Toms River, N.J.)	State	New Brunswick	25 May 55
	JUNIOR HOWARD (San Bernardino, Calif.)	Chaffey Invitational	Ontario	12 Apr 58
18.8	ROD PERRY (Coatesville, Pa.)	State	University Park	23 May 53
	MONTE UPSHAW (Piedmont, Calif.)	North Coast Section	Berkeley	22 May 54
	G. F. ALSBROOK (Ball, Galveston, Tex.)	State	Austin	6 May 55
	Tidwell	State (h)	Wichita	20 May 55
	RUSTY WEEKS (Alhambra, Calif.)	Pacific League	Arcadia	4 May 57
	STERLING MORGAN (Snyder, Tex.)	State	Austin	3 May 58

HIGH JUMP

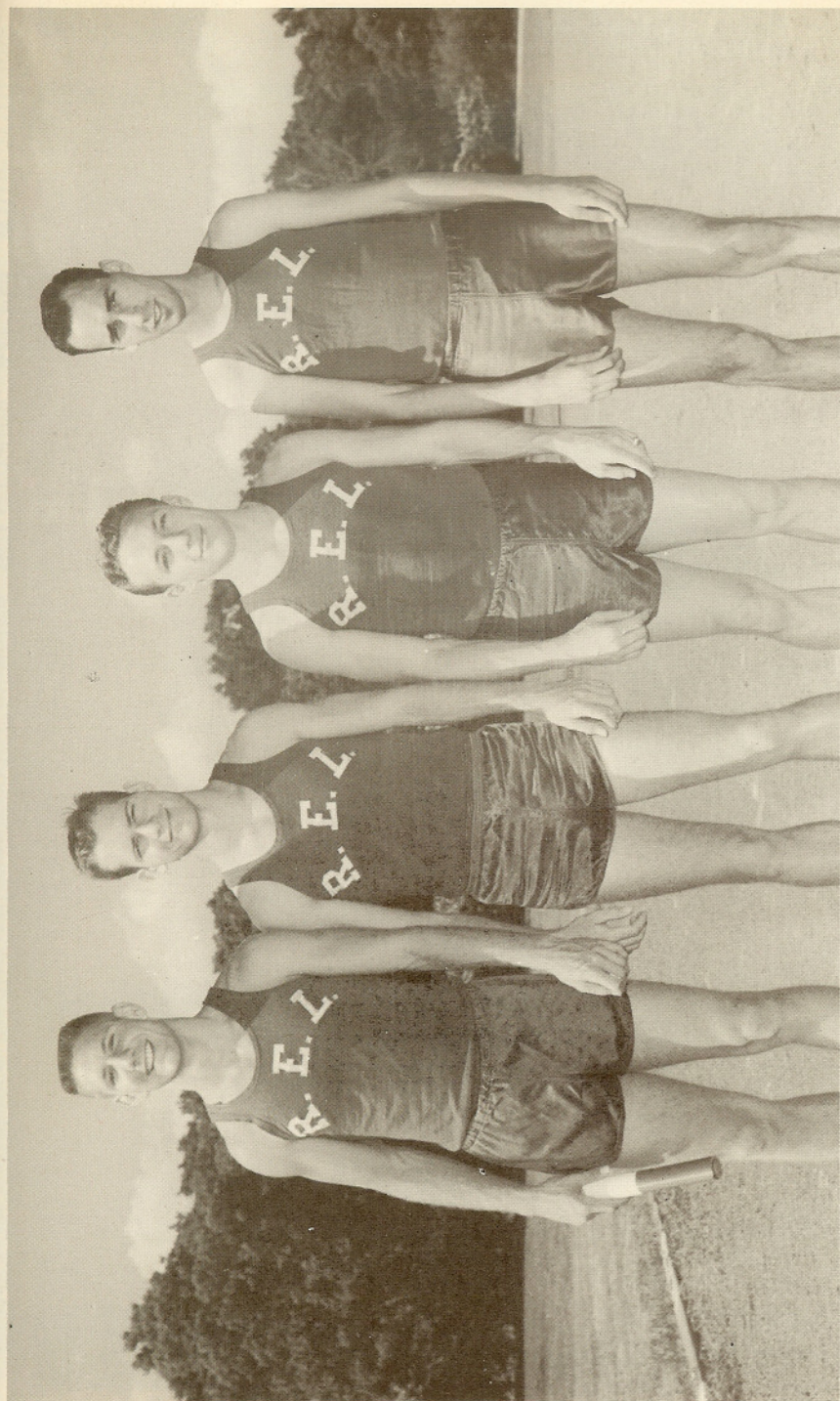
6'10 ⁵ / ₈ "	JOHN THOMAS (Rindge Tech, Cambridge, Mass.)	AAU Tour	Odawara, Japan	14 Sep 58
6'10 ³ / ₈ "	CHARLES DUMAS (Centennial, Compton, Calif.)	Southern Pacific AAU	Los Angeles	10 Jun 55
	Thomas	AAU Tour	Yokohama, Japan	27 Aug 58
6'10"	Dumas	West Coast Relays	Fresno	14 May 55
	Dumas	AAU	Boulder, Colo.	24 Jun 55
6'9 ⁵ / ₈ "	Thomas	AAU Tour	Sapporo, Japan	30 Aug 58
6'9 ³ / ₈ "	WALT MANGHAM (New Castle, Pa.)	W. Pennsylvania Relays	Mt. Lebanon	28 Apr 56
6'9 ³ / ₈ "	Dumas	State	Los Angeles	28 May 55
6'9 ¹ / ₈ "	Thomas	AAU Tour	Fukuoka, Japan	10 Sep 58
6'9"	PAUL STUBER (Bellflower, Calif.)	AAU	Bakersfield	20 Jun 58
6'8 ⁷ / ₈ "	Dumas	Southern Section	Ontario	21 May 55
6'8 ¹ / ₂ "	HANK WYBORNEY (Pt. Angeles, Wash.)	Sub District	Pt. Orchard	9 May 58
	Stuber	Divisional	Bellflower	10 May 58
	Thomas	Boston Interscholastic	Boston	17 May 58
	JOE FAUST (Culver City, Calif.)	Southern Pacific AAU	Eagle Rock	13 Jun 58

BROAD JUMP

25'4 ¹ / ₂ "	OSCAR BEAN (Jefferson, Los Angeles, Calif.)	v. Dorsey	Los Angeles	20 Apr 56
25'4 ¹ / ₂ "	MONTE UPSHAW (Piedmont, Calif.)	State	Berkeley	29 May 54
25'3"	WILLIE DAVIS (Roosevelt, Los Angeles, Calif.)	Eastern League	Los Angeles	9 May 58
25'2 ¹ / ₂ "	GEORGE BROWN (Jordan, Los Angeles, Calif.)	v. Huntington Park	Los Angeles	1 Apr 49
24'11 ¹ / ₄ "	JESSE OWENS (East Technical, Cleveland, O.)	City	Cleveland	3 Jun 33
24'11"	DON TROUTMAN (Roanoke, La.)	State	Lafayette	27 Apr 56
24'10"	SKINNY WHIPPLE (Arkadelphia, Ark.)	Quadrangular	Arkadelphia	22 Apr 33
24'9 ⁵ / ₈ "	Owens	Chicago Interscholastic	Chicago, Ill.	17 Jun 33
24'9 ¹ / ₂ "	LOUIS WATKINS (Jordan, Los Angeles, Calif.)	Marine League	Los Angeles	10 May 55
24'9"	Upshaw	North Coast Section	Berkeley	22 May 54
	Bean	State	Chico	2 Jun 56
24'8 ¹ / ₂ "	BILL HAIRSTON (Central, Columbus, O.)	Ohio Wesleyan Relays	Delaware	28 Apr 51
24'8 ⁵ / ₈ "	BILLY BROWN (Baker, La.)	Southern AAU	Baton Rouge	29 May 37
24'8 ¹ / ₂ "	BILL JACKSON (Fremont, Los Angeles, Calif.)	Southern League	Los Angeles	11 May 57
24'7 ¹ / ₂ "	MAC BURTON (Washington, San Francisco, Calif.)	City Preliminaries	San Francisco	16 May 57

POLE VAULT

15'4"	JIM BREWER (North Phoenix, Ariz.)	Luke-Greenway Invitational	Phoenix	17 May 57
14'9 ³ / ₈ "	Brewer	v. Phoenix Union	Phoenix	13 Mar 57
14'6 ¹ / ₂ "	Brewer	State	Tucson	11 May 57



LEE'S sprint medley relay recordmen -- Wayne Porter, Bill Hearon, Lynn Gray, Ken Taylor.



COMPTON'S distance medley relay -- Woody Covington, Bill Crowley, Art Paz, Willie Williams.

14'6"	Brewer	Coliseum Relays	Los Angeles, Cal.	24 May 57
	Brewer	California Relays	Modesto, Calif.	25 May 57
14'5½"	Brewer	State Qualifying	Phoenix	4 May 57
14'4½"	Brewer	Phoenix Relays	Phoenix	1 Mar 57
14'4"	Brewer	Olympic Fund	St. Louis, Mo.	1 Jun 57
14'3½"	Brewer	Arizona Relays	Tempe	14 Apr 56
14'3"	Brewer	Assembly Meet	Phoenix	4 Mar 57
14'2½"	Brewer	City	Phoenix	29 Mar 57
14'2"	Brewer	Arizona Relays	Tempe	16 Apr 55
14'1½"	Brewer	California AAU	Bakersfield, Cal.	8 Jun 57
14'1"	Brewer	v. Camelback	Phoenix	4 Apr 57
	Brewer	v. Phoenix Union	Phoenix	14 Mar 56
	JOHN ROSE (Hoover, Glendale, Calif.)	State	Long Beach	31 May 58

SHOT PUT

69'3½"	DALLAS LONG (North Phoenix, Ariz.)	Luke-Greenway Invitational	Phoenix	16 May 58
67'2"	Long	Arizona Relays	Tempe	12 Apr 58
66'11½"	Long	Central AA	Phoenix	3 May 58
66'11"	Long	Southern Counties	Huntington Beach, C.	8 Mar 58
66'½"	Long	Bellflower Relays	Bellflower, Cal.	5 Apr 58
65'10½"	HENRY KORN (Stepinac, White Plains, N.Y.)	Invitational	Pelham	17 May 58
65'9"	Long	State	Tucson	10 May 58
65'7½"	Long	City	Phoenix	28 Mar 58
65'5½"	Long	Invitational	Glendale	21 Mar 58
65'5"	Long	v. West Phoenix	Phoenix	25 Apr 58
64'7½"	Korn	Invitational	Englewood, N.J.	17 May 58
64'3"	CLARK BRANSON (Pasadena, Calif.)	State	Berkeley	1 Jun 57
63'11½"	Long	Quadrangular	Mesa	18 Apr 58
63'9½"	HOMER ROBERTSON (Pacific, San Bernardino, Cal.)	State	Chico	2 Jun 56
62'7½"	RAY LOCKE (Barrington, R.I.)	v. Portsmouth	Portsmouth	24 May 56

DISCUS THROW

184'2¾"	AL OERTER (Sewanaka, Floral Park, N.Y.)	Section 8	Amityville	5 Jun 54
184'2½"	KEN SCARBROUGH (McDonald, O.)	State B	Columbus	26 May 56
179'9¾"	DEWEY BOHLING (Highland, Albuquerque, N. M.)	Hobbs Relays	Hobbs	23 Apr 55
179'6"	WAYNE CROW (Corcoran, Calif.)	South Sequoia League	Wasco	5 May 56
	DALLAS LONG (North Phoenix, Ariz.)	Glendale Invitational	Glendale	21 Mar 58
179'2¾"	CLYDE GARDNER (Newton, Ia.)	Central Iowa Conference	Ames	13 May 49
178'5¾"	KARL JOHNSTONE (North Phoenix, Ariz.)	v. Camelback	Phoenix	3 Apr 58
178'5"	Long	Arizona Relays	Tempe	12 Apr 58
177'5"	LEON PATTERSON (Taft, Calif.)	South Yosemite League	Delano	26 Apr 52
177'2½"	Patterson	v. Bakersfield	Taft	2 Apr 52
176'9"	LEO GLASS (Delano, Calif.)	v. Taft	Taft	1 Apr 55
176'7¾"	DARROW HOOPER (North Side, Ft. Worth, Tex.)	District	Ft. Worth	28 Apr 49
176'6"	JIM BURKE (Amphitheater, Tucson, Ariz.)	Southern Arizona Relays	Tucson	6 Apr 57
176'5½"	LYLE CROW (Porterville, Calif.)	Tulare Relays	Tulare	25 Apr 53
176'4½"	BYRL THOMPSON (Southwest, Minneapolis, Minn.)	Aberdeen Relays	Aberdeen	27 Apr 45

JAVELIN THROW

222'10¾"	JAN SIKORSKY (Ramsay, Mt. Pleasant, Pa.)	W. Pennsylvania League	Mt. Lebanon	18 May 57
220'1"	BOB PEOPLES (Classen, Oklahoma City, Okla.)	AAU	Milwaukee, Wisc.	3 Jul 37
219'	Peoples	Murray Aggies Invitational	Tishamingo	2 Apr 37
219'	Peoples	Interscholastic	Stillwater	8 May 37
217'9½"	JERRY SMITH (Junction City, Kansas)	Missouri Valley AAU	Merriam	31 May 58
217'4½"	Smith	Regional	Manhattan	8 May 58
215'11"	GLENN WINNINGHAM (Grants Pass, Ore.)	State	Corvallis	31 May 58
215'1½"	GARY STENSLUND (Douglas, Portland, Ore.)	State (preliminaries)	Corvallis	30 May 58
214'6½"	Smith	v. Manhattan	Junction City	1 Apr 58
214'4"	Peoples	State	Norman	1 May 37
214'2"	Peoples	Pan American Games	Dallas, Tex.	17 Jul 37
213'11½"	Winningham	Triangular	Grants Pass	3 May 58
213'6"	D. C. MILLS (Medford, Ore.)	Portland v. So. Oregon	Medford	26 May 51
213'5"	WAYNE MC DONNELL (Haddon Heights, N.J.)	South Jersey Invitational	Collingswood	28 May 58

HIGH SCHOOL RECORDS FOR STATE FINAL MEETS (Track)

STATE	100	220	440	880	Mile	120 Hurd.	180 Hurd.	½ Mile Relay
Alabama.....	10.0	21.5	50.3	1:58.4	4:32.2	14.8	20.2	1:32.0
Alaska.....	10.4	23.4	49.2	2:09.2	4:39.6			1:34.1
Arizona.....	9.8	22.0	48.8	1:59.2	4:27.5	14.0	19.5	1:30
Arkansas (Big 9).....	10.0	21.8	49.1	2:00.1	4:33.5	14.8	19.6	1:25
(AA).....	9.9	22.4	51.2	2:01.1	4:36	15.3	20.5	1:32.9
(A).....	10.0	22.9	51.7	2:02.5	4:46.8	15.4	20.3	1:35.1
(B).....	10.1	22.4	52.0	2:02.6	4:49.4	15.3	20.1	1:33.9
California.....	9.5	20.7	46.7	1:52.7	4:20.0	14.1	18.9	1:25.9
Canada N. B. (L).....	10.0	23.0	52.0	1:57	4:38.1	15.7		
(M & R).....	10.3	23.8	56.4	2:13.1	4:45.6	18.3		
N. S.	10.4	23.0	52.0	2:01.9	4:35.2			1:39.8
Ont.	10.0	22.3	50.7	1:58.0	4:24.2	15.2		
Sask.	10.1	22.6	51.3	1:59.4	4:33.9			1:34.9
Colorado.....	9.9	21.5	49.2	1:58.2	4:25.2	14.4	19.3	1:30.4
Connecticut.....	9.6	21.2	48.7	1:55.7	4:23.8	14.9	19.3	1:30.7
Washington D. C.....	9.8	22.2	49.7	2:00.9	4:35.0	14.5	20.3	1:30.6
Florida (AA).....	9.9	22.1	49.5	1:58.8	4:36.2	14.4	20.2	1:30.4
(A).....	10.0	22.6	51.6	2:02.4	4:32.2	14.6	20.2	1:31.5
Georgia (AAA).....	9.8	21.4	49.5	1:58.9	4:26.6	14.8	19.7	1:31.7
(AA).....	9.9	21.3	49.2	2:00.8	4:35.1	14.8	19.5	1:33.4
(A).....	10.3	23.0	53.2	2:11	4:48	16.0	22.1	
(B).....	10.0	22.6	50.3	2:03	4:35.2	14.7	19.5	1:31
(C).....	10.2	23.0	52.5	2:01	4:44.4	16.0	21.8	1:37
Hawaii.....	9.7	21.9	49.1	2:00.4	4:36.1		20.9	1:30.8
Idaho.....	9.8	21.7	50.0	1:59.2	4:29.0	14.6	20.0	1:32.4
Illinois.....	9.6	21.0	48.8	1:56.1	4:20.7	14.2	19.2	1:29.2
Indiana.....	9.8	21.2	49.1	1:56.6	4:20.4	14.5	19.1	1:30.7
Iowa.....	9.7	21.3	49.3	1:56.5	4:21.8	14.5	19.2	1:27.6
Kansas.....	9.8	21.0	49.4	1:55.9	4:20.1	14.4	18.5	1:30.0
Kentucky.....	9.9	21.7	50.4	2:00.4	4:31.5	14.9	19.9	1:32.1
Louisiana.....	9.5	20.7	49.1	1:58.5	4:31.1	14.2	19.5	1:29.3
Maine.....	10.1	22.4	50.0	2:02.1	4:31.9	15.2	20.6	1:34.3
Maryland (A).....	10.0	21.1	51.3	2:00.5	4:34.1			1:32.9
(B).....	9.9	21.2	51.2	2:06.4	4:49.0			1:34.0
Massachusetts.....	9.9	21.4	48.2	1:55.5	4:21.5	14.8	19.7	1:30.3
Michigan.....	9.8	21.4	49.7	1:57.6	4:21.8	14.4	19.0	1:30.0
Minnesota.....	9.9	21.9	50.5	1:57.9	4:20.2	14.6	20.0	1:31.3
Mississippi.....	9.9	21.9	49.9	1:59.0	4:31.4	14.9	20.4	1:32.4
Missouri.....	9.7	21.1	48.8	1:57.5	4:21.0	14.7	19.4	1:30.0
Montana.....	9.8	21.6	49.9	1:58.7	4:27.6	14.8	19.6	1:31.1
Nebraska.....	9.8	21.8	48.4	1:58.2	4:26.2	14.6	19.8	1:31.1
Nevada.....	9.8	21.4	50.2	2:00.4	4:36.6	14.8	19.8	1:31.0
New Hampshire (L).....	10.0	22.5	51.6	2:02.2	4:30.6	15.4	20.9	1:35.3
(M).....	10.3	22.2	50.4	2:03	4:32.5	16.3	22.0	1:34.9
New Jersey.....	9.7	21.0	48.3	1:54.7	4:19.5	14.0	19.2	
New Mexico.....	9.8	21.3	49.8	1:58.3	4:31.2	14.6	19.1	1:29.0
New York.....	9.8	20.9	49.1	1:56.7	4:22.6		19.3	1:29.5
North Carolina.....	10.1	21.6	50.1	1:56.2	4:28.8	14.9	19.9	
North Dakota.....	9.8	21.5	50.8	1:59.5	4:33.2	14.4	19.3	1:34.5
Ohio.....	9.6	20.8	46.6	1:56.9	4:24.6	14.4	19.1	1:29.4
Oklahoma.....	9.7	20.8	48.1	1:57.1	4:23.4	13.7	18.2	1:28.0
Oregon.....	9.6	22.2	49.5	1:56.8	4:21.4	14.4	19.3	1:31.2
Pennsylvania (A).....	9.6	21.3	48.5	1:57.0	4:25	14.1	18.8	1:30.0
(B).....	9.9	21.9	49.6	1:58.9	4:22.4		19.8	1:31.8
Rhode Island.....	10.0	21.5	50.4	1:58.3	4:32.3	14.8	19.6	1:33.3
South Carolina.....	9.9	22.0	51.0	1:59.3	4:32.7	15.2	20.4	1:33.7
South Dakota.....	10.0	21.2	49.8	1:59.2	4:30.4	14.7	19.8	1:32.6
Tennessee.....	9.9	21.1	50.1	1:59.5	4:31.5	14.9	19.5	1:31.9
Texas.....	9.5	20.5	47.2	1:55.4	4:17.9	14.0	18.6	
Utah.....	9.8	21.6	49.6	1:58.5	4:32.0	14.5	19.8	1:31.0
Vermont.....	10.1	22.5	51.0	2:03.6	4:35.0	15.2	20.5	
Virginia (I).....	9.9	21.4	49.9	1:56.4	4:26.3	14.4	19.7	
(II).....	10.0	21.5	51.2	2:00.3	4:32	15.1	20.7	1:34.1
(III).....	10.1	22.6	53.0	2:03.2			21.5	1:35.8
Washington.....	9.8	21.2	49.3	1:56.2	4:24.3	14.6	19.5	1:30.2
West Virginia.....	9.8	22.0	50.0	2:00.4	4:34.0	14.5	19.5	1:32.0
Wisconsin.....	9.8	22.0	49.5	1:58.7	4:27.2	14.1	19.6	1:31.3
Wyoming.....	9.9	22.2	49.5	1:59.7	4:36.6	14.6	20.2	1:33.0

NOTE: There are no state meet results for Delaware.

HIGH SCHOOL RECORDS FOR STATE FINAL MEETS (Field)

STATE	Shot	Discus	Javelin	Broad Jump	High Jump	Pole Vault
Alabama.....	52' 7 ⁷ / ₈ "	158' 1 ¹ / ₂ "		23' 1 ¹ / ₄ "	6' 1' 3 ³ / ₈ "	12' 4 ³ / ₄ "
Alaska.....	42' 9"	132' 3"		20' 1 ¹ / ₄ "	5' 9"	10'
Arizona.....	65' 9"	174' 5"		23' 5 ¹ / ₈ "	6' 3 ³ / ₈ "	14' 6 ³ / ₄ "
Arkansas (Big 9).....	51' 10 ¹ / ₂ "	158' 4"		22' 8 ¹ / ₈ "	6' 3 ³ / ₈ "	12' 1 ¹ / ₈ "
(AA).....	50' 3 ¹ / ₂ "	148' 4 ¹ / ₂ "		24'	6' 1 ¹ / ₂ "	12' 4"
(A).....	54' 1 ¹ / ₄ "	147' 3"		21' 8 ¹ / ₂ "	5' 11"	12' 2 ¹ / ₄ "
(B).....	48' 11 ¹ / ₂ "	134' 7 ¹ / ₂ "		22' 10"	6'	12'
California.....	64' 3 ³ / ₄ "	173' 2 ³ / ₄ "		24' 4 ¹ / ₄ "	6' 9' 3 ³ / ₈ "	14' 1"
Canada N.B. (L).....	43' 9"	135' 1 ³ / ₄ "		21' 8 ³ / ₄ "	5' 10 ³ / ₄ "	11' 3"
(M & R).....	42' 2 ¹ / ₄ "	129' 7' 3 ³ / ₈ "		20' 10 ¹ / ₂ "	5' 8' 3 ³ / ₄ "	10' 9"
N. S.	42' 11"	126' 4"		23' 5 ¹ / ₂ "	5' 8"	10' 7' 1 ¹ / ₂ "
Ont.	54' 4' 3 ³ / ₄ "	146' 3' 1 ¹ / ₄ "	181' 4"	22' 5"	6' 1' 1 ¹ / ₂ "	11' 10' 1 ¹ / ₂ "
Sask.	45' 4"	127' 1' 1 ¹ / ₂ "	187' 4"	22' 2"	6' 1' 1 ¹ / ₄ "	11' 4"
Colorado.....	55' 3' 3 ³ / ₄ "	157' 8' 1 ¹ / ₂ "		23' 1' 1 ¹ / ₂ "	6' 6"	12' 10"
Connecticut.....	56' 1' 1 ¹ / ₂ "	169' 7' 1 ¹ / ₄ "	200' 1"	22' 8' 1 ¹ / ₂ "	6' 3' 1 ¹ / ₂ "	12' 2"
Washington D. C.	57'	148' 2"		22' 5"	6' 3"	12'
Florida (AA).....	55'	173' 4' 1 ¹ / ₂ "		22' 7' 1 ¹ / ₂ "	6' 2' 5 ⁵ / ₈ "	13' 2' 1 ¹ / ₂ "
(A).....	54' 5"	154' 4' 1 ¹ / ₂ "		22' 8"	6' 2' 1 ¹ / ₄ "	13'
Georgia (AAA).....	59' 6' 1 ¹ / ₂ "	159' 11' 3 ³ / ₄ "	180' 4' 1 ¹ / ₄ "	22' 11' 1 ¹ / ₂ "	6' 2' 3 ³ / ₄ "	12' 3' 1 ¹ / ₂ "
(AA).....	54' 1"	161' 6"		22' 4' 1 ¹ / ₂ "	6' 7' 3 ³ / ₈ "	12' 11' 1 ¹ / ₄ "
(A).....	49' 2"	136' 1' 1 ¹ / ₂ "		22' 4' 1 ¹ / ₂ "	6' 1"	11' 8"
(B).....	53' 8"	147' 11' 1 ¹ / ₂ "		22' 1' 1 ¹ / ₂ "	6' 3' 1 ¹ / ₈ "	12' 2' 1 ¹ / ₂ "
(C).....	49' 4' 3 ³ / ₄ "	140' 6"		22'	6' 2' 1 ¹ / ₂ "	11' 11"
Hawaii.....	55' 7"			22' 7' 1 ¹ / ₂ "	6' 3' 3 ³ / ₄ "	12' 8"
Idaho.....	54' 6"	160' 2' 1 ¹ / ₂ "		22' 7"	6' 1"	13' 2"
Illinois.....	58' 3' 1 ¹ / ₂ "	169' 8"		24' 2"	6' 5' 1 ¹ / ₄ "	13' 1' 1 ¹ / ₈ "
Indiana.....	57' 8' 1 ¹ / ₄ "			23' 2' 1 ¹ / ₂ "	6' 4' 1 ¹ / ₄ "	13' 6' 1 ¹ / ₈ "
Iowa.....	58' 1' 1 ¹ / ₂ "	163' 7' 1 ¹ / ₈ "		23' 3"	6' 3' 1 ¹ / ₄ "	12' 7' 1 ¹ / ₄ "
Kansas.....	60' 9' 3 ³ / ₈ "	175' 11' 1 ¹ / ₂ "	205' 6"	23' 5' 1 ¹ / ₂ "	6' 5' 1 ¹ / ₂ "	12' 8' 1 ¹ / ₄ "
Kentucky.....	52' 6' 1 ¹ / ₂ "	157' 5"		22' 11"	6' 2"	11' 10' 3 ³ / ₄ "
Louisiana.....	57' 4"	157' 3"	202' 5"	24' 11"	6' 3' 7 ⁷ / ₈ "	13' 7"
Maine.....	51' 4' 1 ¹ / ₂ "	154' 3' 3 ³ / ₄ "	180' 10"	22' 1' 1 ¹ / ₂ "	6' 1' 1 ¹ / ₂ "	11' 9' 1 ¹ / ₄ "
Maryland (A).....	50' 4' 1 ¹ / ₄ "	150' 1' 1 ¹ / ₂ "		22' 4' 1 ¹ / ₂ "	6'	12' 6"
(B).....	48'	135' 10"		22'	5' 10' 3 ³ / ₄ "	11'
Massachusetts.....	59' 9' 3 ³ / ₄ "	147' 4' 3 ³ / ₄ "	183' 2"	22' 11' 1 ¹ / ₄ "	6' 7' 1 ¹ / ₂ "	12' 1' 1 ¹ / ₄ "
Michigan.....	57'			23' 8' 3 ³ / ₈ "	6' 4"	12' 11' 3 ³ / ₄ "
Minnesota.....	57' 4' 1 ¹ / ₂ "	169' 11' 1 ¹ / ₂ "		23' 4"	6' 2' 5 ⁵ / ₈ "	12' 8' 1 ¹ / ₂ "
Mississippi.....	53' 1' 1 ¹ / ₄ "	151' 1' 1 ¹ / ₂ "		22' 6"	6' 1' 3 ³ / ₄ "	12' 6' 1 ¹ / ₈ "
Missouri.....	59' 3' 1 ¹ / ₂ "	172' 8' 1 ¹ / ₂ "		23' 6' 3 ³ / ₄ "	6' 3"	12' 8' 1 ¹ / ₄ "
Montana.....	55' 1' 1 ¹ / ₂ "	162' 8' 1 ¹ / ₂ "	197' 5"	22' 8' 1 ¹ / ₂ "	6' 3' 1 ¹ / ₄ "	12' 10"
Nebraska.....	57' 3' 3 ³ / ₄ "	163' 2' 1 ¹ / ₂ "		22' 10' 3 ³ / ₄ "	6' 5' 1 ¹ / ₂ "	12' 10' 1 ¹ / ₄ "
Nevada.....	52' 10' 1 ¹ / ₄ "	146' 2' 3 ³ / ₈ "		22' 6' 1 ¹ / ₂ "	6' 2"	12' 1' 1 ¹ / ₄ "
New Hampshire (L).....	49' 8' 3 ³ / ₄ "	157' 6"	180' 9' 1 ¹ / ₂ "	21' 4"	6' 1' 1 ¹ / ₂ "	11' 8"
(M).....	52' 10' 1 ¹ / ₄ "	141' 2' 1 ¹ / ₂ "	177' 2"	20' 1' 1 ¹ / ₂ "	5' 8"	11' 7' 1 ¹ / ₄ "
New Jersey.....	60' 6' 1 ¹ / ₄ "	160' 2"	211' 8' 3 ³ / ₈ "	24' 4' 1 ¹ / ₂ "	6' 4' 1 ¹ / ₄ "	13' 1' 1 ¹ / ₂ "
New Mexico.....	52' 8"	160' 3' 1 ¹ / ₂ "	193' 1' 3 ³ / ₈ "	23' 7' 3 ³ / ₈ "	6' 4' 5 ⁵ / ₈ "	12' 6' 3 ³ / ₄ "
New York.....	57' 5' 1 ¹ / ₄ "	184' 2' 3 ³ / ₄ "	190'	23'	6' 4' 1 ¹ / ₄ "	12' 6' 1 ¹ / ₂ "
North Carolina.....	52' 11"	150' 10' 3 ³ / ₈ "		22' 1"	6' 3' 3 ³ / ₈ "	12' 1"
North Dakota.....	53' 2"	157' 7"	183' 5"	22' 11' 1 ¹ / ₂ "	6' 6"	12' 3' 1 ¹ / ₂ "
Ohio.....	59' 9' 3 ³ / ₄ "	184' 2' 3 ³ / ₈ "		24' 3' 3 ³ / ₄ "	6' 5"	13' 9' 5 ⁵ / ₈ "
Oklahoma.....	55' 7"	168' 10"		23' 9"	6' 6' 3 ³ / ₄ "	13' 2' 1 ¹ / ₄ "
Oregon.....	58' 2' 1 ¹ / ₄ "	164' 6' 5 ⁵ / ₈ "	215' 11"	23' 10' 1 ¹ / ₂ "	6' 3"	14' 1' 1 ¹ / ₂ "
Pennsylvania (A).....	56' 8"	166' 9' 3 ³ / ₄ "	206' 10"	22' 9"	6' 5' 7 ⁷ / ₈ "	12' 11"
(B).....	57' 7' 1 ¹ / ₂ "	158' 5' 1 ¹ / ₂ "	193' 5' 3 ³ / ₈ "	22' 5"	6' 1"	12' 4' 1 ¹ / ₂ "
Rhode Island.....	58' 10' 1 ¹ / ₄ "		190' 1"	21' 9"	6' 2' 3 ³ / ₄ "	11' 9' 3 ³ / ₄ "
South Carolina.....	53' 3' 1 ¹ / ₂ "	143' 10' 3 ³ / ₄ "	180'	22' 1"	6' 1' 3 ³ / ₈ "	12'
South Dakota.....	51' 9' 3 ³ / ₈ "	158' 3' 1 ¹ / ₂ "		22' 9' 1 ¹ / ₂ "	6' 2"	12' 5' 1 ¹ / ₂ "
Tennessee.....	52' 11' 1 ¹ / ₂ "	157' 1"		22' 7"	6' 1"	12' 2' 1 ¹ / ₄ "
Texas.....	59' 10"	174' 8' 1 ¹ / ₂ "		24' 4"	6' 5' 5 ⁵ / ₈ "	13' 2"
Utah.....	58' 3' 3 ³ / ₈ "	170' 4' 1 ¹ / ₂ "	188' 10' 1 ¹ / ₂ "	22' 8"	6' 3' 3 ³ / ₄ "	12' 11' 3 ³ / ₈ "
Vermont.....	51' 7"	151' 11' 1 ¹ / ₂ "	181' 3"	21' 3' 3 ³ / ₈ "	5' 11' 3 ³ / ₄ "	12' 3' 3 ³ / ₄ "
Virginia (I).....	54' 10"	158' 2' 1 ¹ / ₂ "		23' 8' 3 ³ / ₈ "	6' 2' 5 ⁵ / ₈ "	12' 8' 1 ¹ / ₄ "
(II).....	56' 6"	154' 4' 1 ¹ / ₂ "		22' 4"	6' 3' 3 ³ / ₈ "	12' 10"
(III).....	53' 7' 1 ¹ / ₄ "	145' 6"		21' 4"	6' 3"	
Washington.....	60' 7"	163' 1' 1 ¹ / ₂ "	198' 11"	23' 7"	6' 8' 3 ³ / ₁₆ "	13' 1' 1 ¹ / ₄ "
West Virginia.....	52' 6"	175' 5"		23' 3"	6' 3' 3 ³ / ₄ "	12' 1"
Wisconsin.....	57' 6"	167' 5' 3 ³ / ₄ "		23' 7"	6' 2' 3 ³ / ₄ "	13' 6' 3 ³ / ₈ "
Wyoming.....	52' 10"	152' 6' 3 ³ / ₄ "		22' 5' 1 ¹ / ₂ "	6' 1' 3 ³ / ₄ "	12' 4' 3 ³ / ₄ "

NOTE: Three are no state results for Delaware.

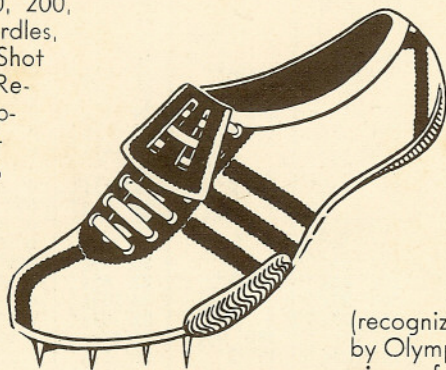
Dennis Anderson
360 Lennox Avenue
Menlo Park, Calif.

adidas

the original **3 - STRIPE** sports shoes

WORLD RECORD

(including 100, 200,
400, 800, Hurdles,
High Jump, Shot
Put, Javelin, Re-
lays, Hop-Step-
Jump, Decath-
lon, Distances,
etc.)



TRACK SHOES

(recognized as the world's finest
by Olympic and National Cham-
pions of the United States, No.
America, So. America, Europe,
Asia, Africa and Australia.)

— made in Germany —

write, phone or visit

adidas

3-stripe track shoe headquarters

10636 Magnolia Blvd.
N. HOLLYWOOD, CAL.
Phones:
PO. 1-8190, ST. 7-5013
& PO. 3-3836 (eves)

Clifford Severn
Sporting Goods

Branch Office
P. O. Box 2631
St. Louis 16, Missouri

**ORDER
NOW**

- adidas FOOTBALL shoes
lighter than most track shoes

**TEAM
PRICE**