



14<sup>th</sup> Annual

\$ .2404 Selling Price  
.0096 Sales Tax  
TOTAL PRICE..... 25¢

# BIG TEN - PCC

*Dual Track Meet*

★ JUNE 21, 1955 ★

EDWARDS TRACK STADIUM, BERKELEY, CALIF.

# PCC-BIG TEN DUAL MEET WINNERS

The Western Conference (Big Ten) and Pacific Coast Conference began a series of annual interconference dual track and field meets in 1937. This series was inter-

rupted in 1942 because of wartime travel restrictions, but it was resumed in 1947. (Present records are underlined.)

## 100-Yard Dash

1937—Grieve, BT, 9.8s.  
1938—Nutting, PCC, 9.7s.  
1939—Jeffrey, PCC, 9.9s.  
1940—Jeffrey, PCC, 9.8s.  
1941—Qvale, PCC, 9.8s.  
1942—Davis, PCC, 9.5s.  
1947—Mathis, Big 9, 9.6s.  
1948—Anderson, PCC, 9.9s.  
1949—Patton, PCC, 9.6s.  
1950—Anderson, PCC, 9.7s.  
1951—Work, PCC, 10.1s.  
1953—Williams, BT, 9.5s.  
1954—Williams, BT, 9.6s.

## 220-Yard Dash

1937—L. Orr, PCC, 21.0s.  
1938—Emigh, PCC, 21.3s.  
1939—Jeffrey, PCC, 21.1s.  
1940—Jeffrey, PCC, 21.3s.  
1941—Sinclair, PCC, 21.5s.  
1942—Davis, PCC, 20.4s.  
1947—Peters, Big 9, 21.5s.  
1948—Peters, Big 9, 21.6s.  
1949—Peters, Big 9, 20.7s.  
1950—Peters, Big 9, 21.1s.  
1951—Brown, PCC, 22.0s.  
1953—Richard, PCC, 21.6s.  
1954—Gary, PCC, 21.7s.

## 440-Yard Dash

1937—Malott, PCC, 47.1s.  
1938—Malott, PCC, 47.5s.  
1939—Miller, PCC, 47.4s.  
1940—L. Orr, PCC, 47.7s.  
1941—Cochran, BT, 47.5s.  
1942—Bourland, PCC, 47.5s.  
1947—McKenley, Big 9, 46.3s.  
1948—Whitfield, Big 9, 47.6s.  
1949—Whitfield, Big 9, 48.1s.  
1950—Collins, Big 9, 48.6s.  
1951—McSweeney, BT, 48.5s.  
1953—Lea, PCC, 48.1s.  
1954—Fessenden, BT, 47.9s.

## 880-Yard Run

1937—Beetham, BT, 1m. 52.4s.  
1938—Fenske, BT, 1m. 53.2s.  
1939—Dale, PCC, 1m. 51.5s.  
1940—Kane, BT, 1m. 53.0s.  
1941—Bredenbach, BT, 1m. 52.6s.  
1942—Rehberg, BT, 1m. 54.2s.  
1947—Clifford, Big 9, 1m. 51.4s.  
1948—Chambers, PCC, 1m. 52.4s.  
1949—Gehrmann, Big 9, 1m. 52.2s.  
1950—Gehrmann, Big 9, 1m. 50.7s.  
1951—Siders, BT, 1m. 54.2s.  
1953—Siders, BT, 1m. 52.0s.  
1954—Maynard, BT, 1m. 51.9s.

## Mile Run

1937—Lash, BT, 4m. 9.4s.  
1938—Fenske, BT, 4m. 20.9s.  
1939—Zamperini, PCC, 4m. 11.9s.  
1940—Moore, PCC, 4m. 14.3s.  
1941—Kane, BT, 4m. 13.9s.  
1942—Kane, BT, 4m. 14.0s.  
1947—Gehrmann, Big 9, 4m. 19.0s.  
1948—Barten, Big 9, 4m. 14.6s.  
1949—Gehrmann, Big 9, 4m. 16.5s.  
1950—Gehrmann, Big 9, 4m. 11.1s.  
1951—Truex, BT, 4m. 17.4s.  
1953—Ross, BT, 4m. 13.2s.  
1954—Dellinger, PCC, 4m. 10.6s.

## Two-Mile Run

1937—Lash, BT, 9m. 22.5s.  
1938—Mehl, BT, 9m. 13.5s.  
1939—Schwartzkopf, BT, 9m. 12.8s.  
1940—Tolliver, BT, 9m. 24.6s.  
1941—Tolliver, BT, 9m. 15.6s.  
1942—Mitchell, BT, 9m. 20.3s.  
1947—Sink, PCC, 9m. 18.1s.  
1948—Sink, PCC, 9m. 28.3s.  
1949—Urguhart, Big 9, 9m. 18.6s.  
1950—McEwen, Big 9, 9m. 9.6s.  
1951—McEwen, BT, 9m. 13.8s.  
1953—Ferguson, BT, 9m. 3.4s.  
1954—Matthews, BT, 9m. 6.0s.

## High Hurdles

1937—Stafey, PCC, 14.6s.  
1938—Humphrey, PCC, 14.3s.

1939—Humphrey, PCC, 14.6s.  
1940—Smith, BT, 14.8s.  
1941—Kacewicz, PCC, 14.9s.  
1942—Wright, BT, 14.0s.  
1947—Porter, Big 9, 14.2s.  
1948—Porter, Big 9, 13.9s.  
1949—Dixon, PCC, 14.1s.  
1950—Attlesley, PCC, 13.8s.  
1951—Davis, PCC, 14.4s.  
1953—Davis, PCC, 13.8s.  
1954—Thomson, BT, 14.4s.

## Low Hurdles

1937—Vickery, PCC, 23.2s.  
1938—Vickery, PCC, 22.9s.  
1939—Cochran, BT, 23.3s.  
1940—McBain, PCC, 23.8s.  
1941—Cochran, BT, 23.2s.  
1942—Wright, BT, 23.0s.  
1947—Porter, Big 9, 23.1s.  
1948—Porter, Big 9, 23.1s.  
1949—Dixon, PCC, 23.0s.  
1950—Attlesley, PCC, 23.2s.  
1951—Davis, PCC, 23.4s.  
1953—Davis, PCC, 23.0s.  
1954—Corley, BT, 23.3s.

## High Jump

1937—Walker, BT, 6 ft. 8 in.  
1938—Albritton, BT, 6 ft. 6<sup>5</sup>/<sub>8</sub> in.  
1939—Mallery, PCC, 6 ft. 5<sup>3</sup>/<sub>8</sub> in.  
1940—Wilson, PCC, 6 ft. 7<sup>1</sup>/<sub>8</sub> in.  
1941—Steers, PCC, 6 ft. 11 in.  
1942—Hart, PCC, 6 ft. 4 in.  
1947—Hanger, PCC, 6 ft. 7<sup>1</sup>/<sub>8</sub> in.  
1948—Eddleman, Big 9, 6 ft. 5 in.  
Jones, Big 9, tie.  
1949—Eddleman, Big 9, 6 ft. 4 in.  
1950—Edgar Jones, Big 9, 6 ft. 4<sup>1</sup>/<sub>8</sub> in.  
Eric Roberts, PCC;  
Jack Barnes, PCC, tie  
1951—Widenfelt, PCC, 6 ft. 6 in.  
1953—Shelton, PCC, 6 ft. 9<sup>3</sup>/<sub>8</sub> in.  
1954—Shelton, PCC, 6 ft. 10<sup>1</sup>/<sub>2</sub> in.

## Broad Jump

1937—Nutting, PCC, 24 ft. 6 in.  
1938—Nutting, PCC, 25 ft. 2 in.  
1939—Manuel, PCC, 24 ft. 5<sup>3</sup>/<sub>8</sub> in.  
1940—Turner, PCC, 25 ft. 6<sup>3</sup>/<sub>8</sub> in.  
1941—Bleeker, PCC, 23 ft. 4<sup>1</sup>/<sub>2</sub> in.  
1942—Dupre, BT, 24 ft. 7 in.  
1947—Lawrence, PCC, 23 ft. 4<sup>5</sup>/<sub>8</sub> in.  
1948—Holland, Big 9, 24 ft. 7<sup>7</sup>/<sub>8</sub> in.  
1949—Aihara, PCC, 24 ft. 1<sup>3</sup>/<sub>8</sub> in.  
1950—Holland, Big 9, 24 ft. 11<sup>1</sup>/<sub>4</sub> in.  
1951—Brown, PCC, 23 ft. 11 in.  
1953—Skartvedt, PCC, 23 ft. 6<sup>1</sup>/<sub>2</sub> in.  
1954—Arnett, PCC, 23 ft. 11<sup>1</sup>/<sub>8</sub> in.

## Pole Vault

1937—Sefton, PCC, 14 ft. 6 in.  
Meadows, PCC, tie  
1938—Varoff, PCC, 14 ft. 2 in.  
1939—Monroe, PCC, 14 ft.  
Varoff, PCC, tie  
1940—Smith, PCC, 14 ft.  
1941—Schaefer, PCC, 14 ft.  
Smith, PCC, tie  
1942—Williams, BT, 13 ft. 9 in.  
DeField, BT, tie  
1947—Moore, Big 9, 14 ft.  
1948—Montgomery, PCC, 13 ft. 10 in.  
Cooper, Big 9, tie  
1949—Rasmussen, PCC, 14 ft. 1 in.  
Montgomery, PCC; Laz, Big 9, tie  
1950—Laz, Big 9, 14 ft. 3 in.  
1951—Laz, BT, 14 ft. 8<sup>1</sup>/<sub>16</sub> in.  
1953—Wright, BT, 13 ft. 6 in.  
Eilers, PCC, tie  
1954—Ehrhart, BT, 14 ft.

## Shot-Put

1937—Watson, BT, 52 ft. 10<sup>3</sup>/<sub>4</sub> in.  
1938—Strode, PCC, 50 ft. 3<sup>3</sup>/<sub>4</sub> in.  
1939—Anderson, PCC, 53 ft. 11<sup>1</sup>/<sub>2</sub> in.  
1940—Trout, PCC, 53 ft. 4<sup>1</sup>/<sub>2</sub> in.  
1941—Merritt, PCC, 50 ft. 3<sup>3</sup>/<sub>4</sub> in.  
1942—Merritt, PCC, 50 ft. 10<sup>3</sup>/<sub>4</sub> in.  
1947—Gordien, Big 9, 53 ft. 9<sup>1</sup>/<sub>4</sub> in.  
1948—Fonville, Big 9, 53 ft. 11 in.  
1949—Davis, PCC, 54 ft. 8<sup>3</sup>/<sub>4</sub> in.  
1950—Chandler, PCC, 56 ft. 1<sup>3</sup>/<sub>4</sub> in.  
1951—O'Brien, PCC, 53 ft. 4<sup>1</sup>/<sub>8</sub> in.

1953—O'Brien, PCC, 55 ft. 9 in.  
1954—Stellern, PCC, 53 ft. 6 in.

## Discus Throw

1937—Zagar, PCC, 159 ft. 7<sup>3</sup>/<sub>4</sub> in.  
1938—Zagar, PCC, 158 ft. 5<sup>1</sup>/<sub>2</sub> in.  
1939—Zagar, PCC, 158 ft. 1<sup>1</sup>/<sub>2</sub> in.  
1940—Harris, BT, 159 ft. 11 in.  
1941—Harris, BT, 168 ft. 4<sup>3</sup>/<sub>4</sub> in.  
1942—Fitch, BT, 165 ft. 10 in.  
1947—Gordien, Big 9, 172 ft. 8<sup>3</sup>/<sub>4</sub> in.  
1948—Gordien, Big 9, 165 ft. 11<sup>1</sup>/<sub>2</sub> in.  
1949—Thompson, Big 9, 167 ft. 4<sup>3</sup>/<sub>4</sub> in.  
1950—Doyle, PCC, 169 ft. 1<sup>1</sup>/<sub>2</sub> in.  
1951—Mathias, PCC, 173 ft. 4 in.  
1953—Iness, PCC, 178 ft. 5<sup>7</sup>/<sub>8</sub> in.  
1954—Koch, PCC, 165 ft.

## Javelin Throw

1937—Johnson, PCC, 210 ft. 10<sup>3</sup>/<sub>4</sub> in.  
1938—Soper, PCC, 204 ft. 6 in.  
1939—Peoples, PCC, 215 ft. 1 in.  
1940—Brown, PCC, 232 ft. 7 in.  
1941—M. Biles, PCC, 217 ft. 7 in.  
1942—Discontinued as a meet event.

## 440-Yard Relay

1937—PCC (L. Orr, Boone, Ledford, Weiershauser), 40.7s.  
1938—PCC (Anderson, Ledford, Jordan, L. Orr), 41.7s.  
1939—(Race cancelled)  
1940—PCC (Willis, Anderson, Sinclair, Jeffrey), 41.0s.  
1941—BT (Hammond, Thomas, Pief, Piker), 41.0s.  
1942—BT (Trepanier, Kelley, Farmer, Wright), 41.7s.  
1947—Big 9 (Mathis, Houden, Simpson, Peters), 40.6s.  
1948—Big 9 (Johnson, Cook, Walker, Peters), 41.0s.  
1949—PCC (Pasquali, Work, Henthorne, Patton), 40.9s.  
1950—PCC (Weisman, Fell, Mejia, Anderson), 41.5s.  
1951—BT (Gonzales, Sykes, Scott, Thomas), 41.7s.  
1953—PCC (Graffio, Richardson, Blackburn, Richard), 41.1s.  
1954—Big 10 (Brabham, Corley, Nash, Williams), 41.2s.

## Mile Relay

1937—PCC (Nettleton, Malott, Weiershauser, McCurdy), 3m. 11.8s.  
1938—PCC (Pettichord, Bachman, Miller, Malott), 3m. 15.1s.  
1939—PCC (Pettichord, Upton, Watts, Miller), 3m. 12.8s.  
1940—BT (Cochran, Leutritz, Salzman, Briedenbach), 3m. 11.7s.  
1941—PCC (Reese, Froom, Barnes, Klemmer), 3m. 9.4s.  
1942—PCC (Smith, Long, Wachtler, Bourland), 3m. 17.3s.  
1947—Big 9 (Vranek, Rehberg, Clifford, McKenzie), 3m. 13.6s.  
1948—Big 9 (Johnson, Cogswell, Porter, Whitfield), 3m. 14.1s.  
1949—Big 9 (Cogswell, Comer, Gehrmann, Whitfield), 3m. 16.1s.  
1950—Big 9 (Holland, Garrett, Gehrmann, Collins), 3m. 15s.  
1951—PCC (Nicholson, Bradfey, Sorgen, Miller), 3m. 16.7s.  
1953—PCC (George, Timmerman, Sorgen, Lea), 3m. 14.3s.  
1954—Big 10 (Gosper, Robinson, Youtsey, Fessenden), 3m., 10.6s.

## Shuttle Hurdle Relay

1947—Big 9 (Duff, Mitchell, Maxwell, Porter), 58.7s.  
1948—Big 9 (Walker, Mitchell, Maxwell, Porter), 56.8s.  
1949—PCC (McKee, Russell, Attlesley, Dixon), 57.3s.  
1950—PCC (Burke, Halderman, Barnard, Attlesley), 57.8s.  
1951—PCC (Barnard, Kreitz, Steward, Davis), 1m. 9.9s.  
1953—Big 10 (Bruner, Corbelli, Thomson, McNulty), 57.3s.  
1954—PCC (Wright, Ball, Dozier, Wood), 57.4s.

## OFFICIAL PROGRAM

*14th Annual*

# BIG TEN-PACIFIC COAST CONFERENCE

*Interconference Dual Meet*

Edwards Stadium

Berkeley, California

June 21, 1955

---

Program produced by ASUC ATHLETIC NEWS BUREAU, University of California

---

## THE OUTLOOK

With six "swing" events holding the possible key to victory, today's renewal of the spirited cinder rivalry between the Pacific Coast and Big Ten looms as the closest in the colorful series dating from 1937.

The Coast stars will count on strength in the field events plus likely sweeps in the mile and two-mile to offset the Big Ten sprint, hurdle and middle distance power, with the mile relay figuring to be the deciding event.

On the basis of past performances (not including last Saturday's NCAA meet), the crucials shape up something like this:

880—Big Ten champ Pete Gray is a slight favorite over Oregon's Jim Bailey, the Aussie who has beaten Bill Dellinger in the mile. However, Illinois' Henry Cryer is on the upswing after an Army hitch and could take it all. Potentially the best race of the day.

High hurdles—Illini pride Willard Thomson is the hands-down favorite, but second and third are anybody's guess. Joe Savoldi, son of the immortal fullback, and decathlon ace Milt Campbell rate a slight edge over the Coast's best, Jim Ball and Bernie Nelson.

High jump—Again the battle is for the place and show. Easy Ernie Shelton should win, but SC's Floyd Jeter has been erratic after an early 6-8 leap and Mark Booth of Michigan could upset.

Discus — On paper, it's a Koch-Vick-Drummond

sweep for the Coast, but none have been overly consistent. Gopher Jerry Helgeson will be lying in the grass.

Broad jump—Another wide-open event. Michigan's Junior Stielstra and Tom Hendricks are bracketed with Frank Herrmann of Stanford at around the 24-foot mark. You pick it.

Mile relay: This could be the clincher, with two evenly matched teams setting up a great anchor battle between Kevan Gosper and Bruin soph flash Russ Ellis.

Elsewhere, the competition is equally hot but a little more clear-cut. The West's best-ever group of distance runners hopes to sweep the mile and two-mile, offsetting some rackings absorbed in these events in past years. With the phenomenal Bob Seaman and Fernando Ledesma leading the way, meet records should topple in both races.

For the Midwesterners, husky Jim Golliday is the best century runner since Mel Patton and given a warm evening, could crowd the 9.3 mark again. He's capably seconded by Minnesota's Harry Nash.

Meet records will also be threatened in the shot by Troy's Ray Martin, who has bettered the present mark by over a foot, and in the pole vault, where Ron Morris could nudge Don Laz's 14-8 standard. Only a soph, Morris has cleared 14-8 or better three times this season.

The PCC holds a 8-5 edge in meets to date. What'll it be after today?



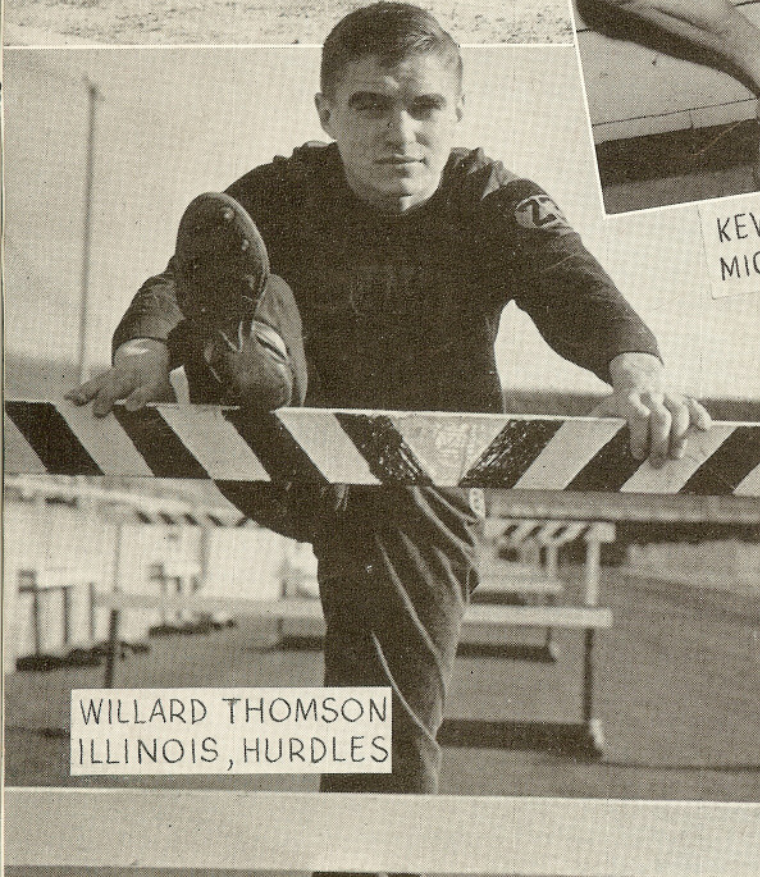
JIM GOLLIDAY  
NORTHWESTERN, SPRINTS



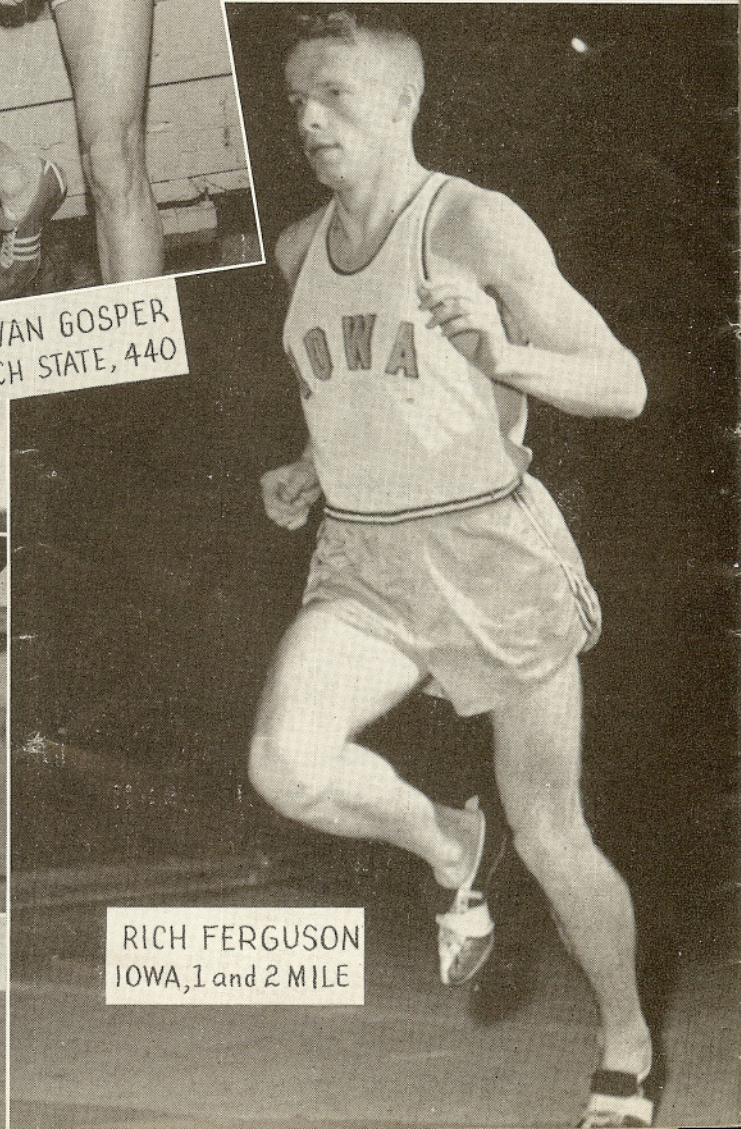
MILT CAMPBELL  
INDIANA, HIGH HURDLES



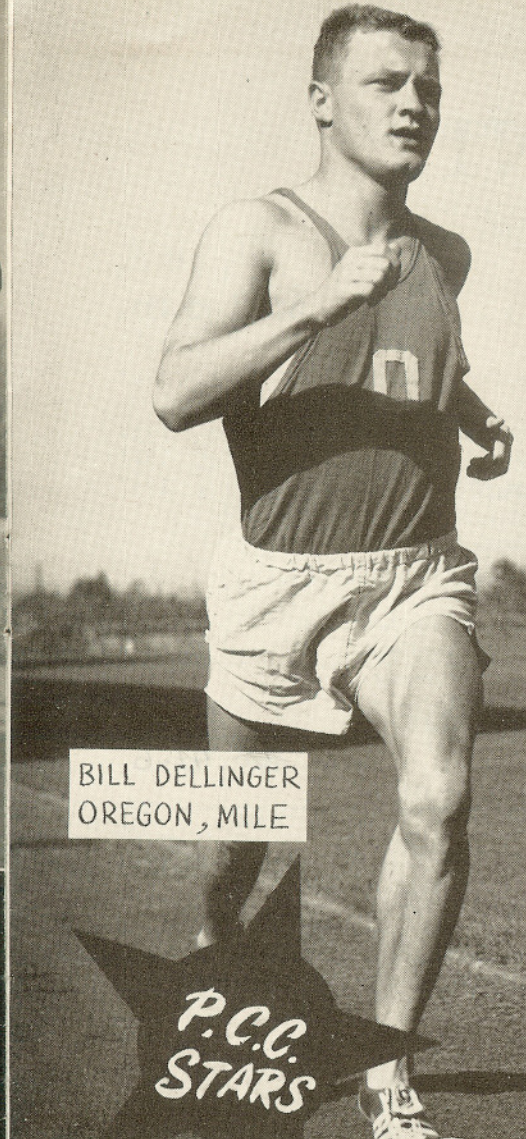
KEVAN GOSPER  
MICH STATE, 440



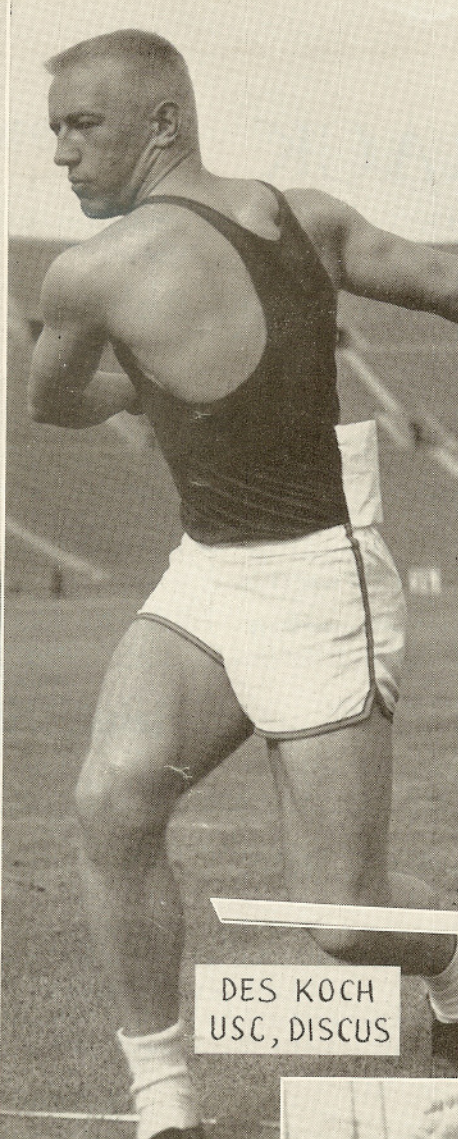
WILLARD THOMSON  
ILLINOIS, HURDLES



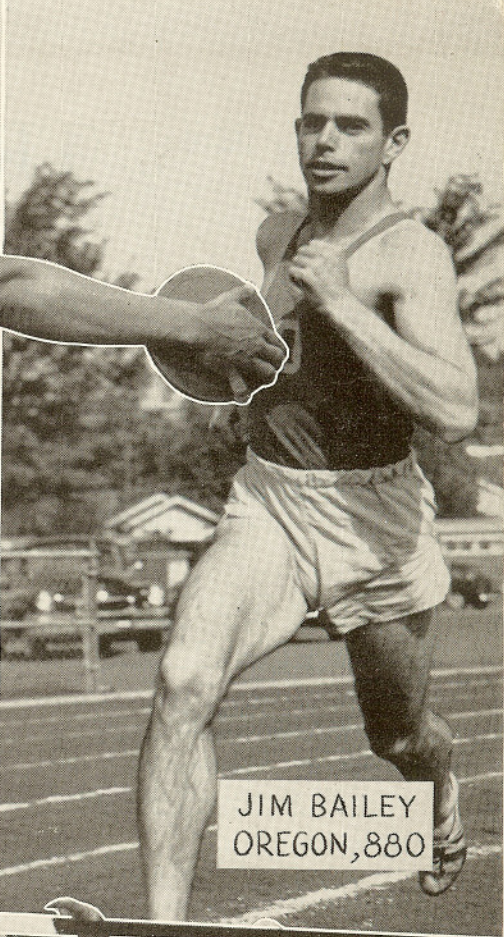
RICH FERGUSON  
IOWA, 1 and 2 MILE



BILL DELLINGER  
OREGON, MILE

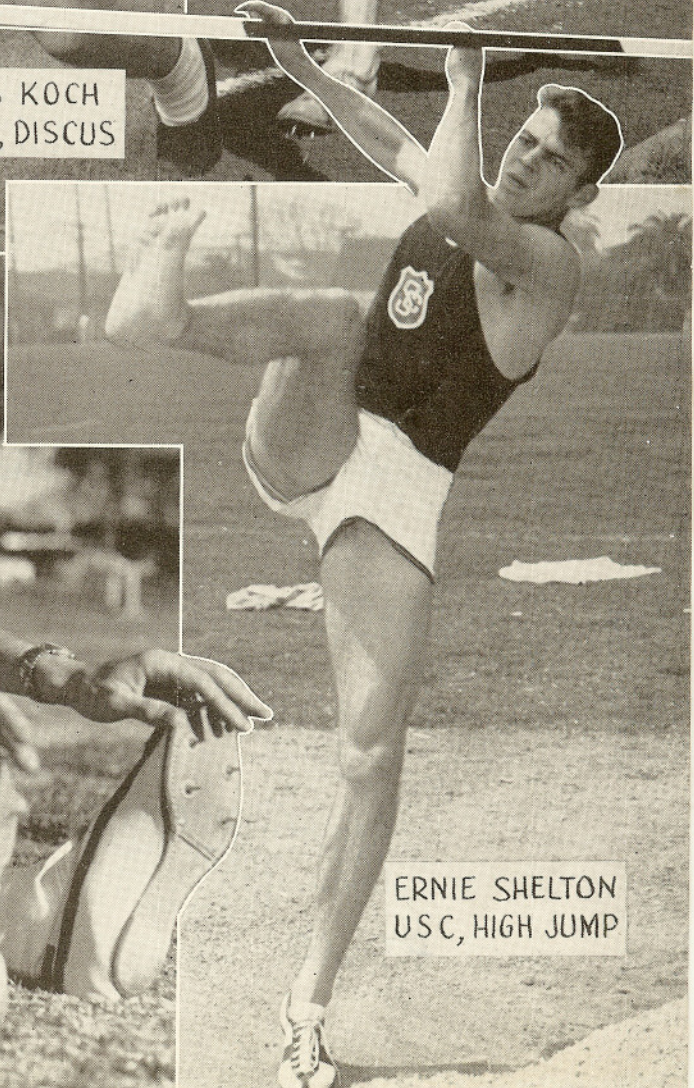


DES KOCH  
USC, DISCUS

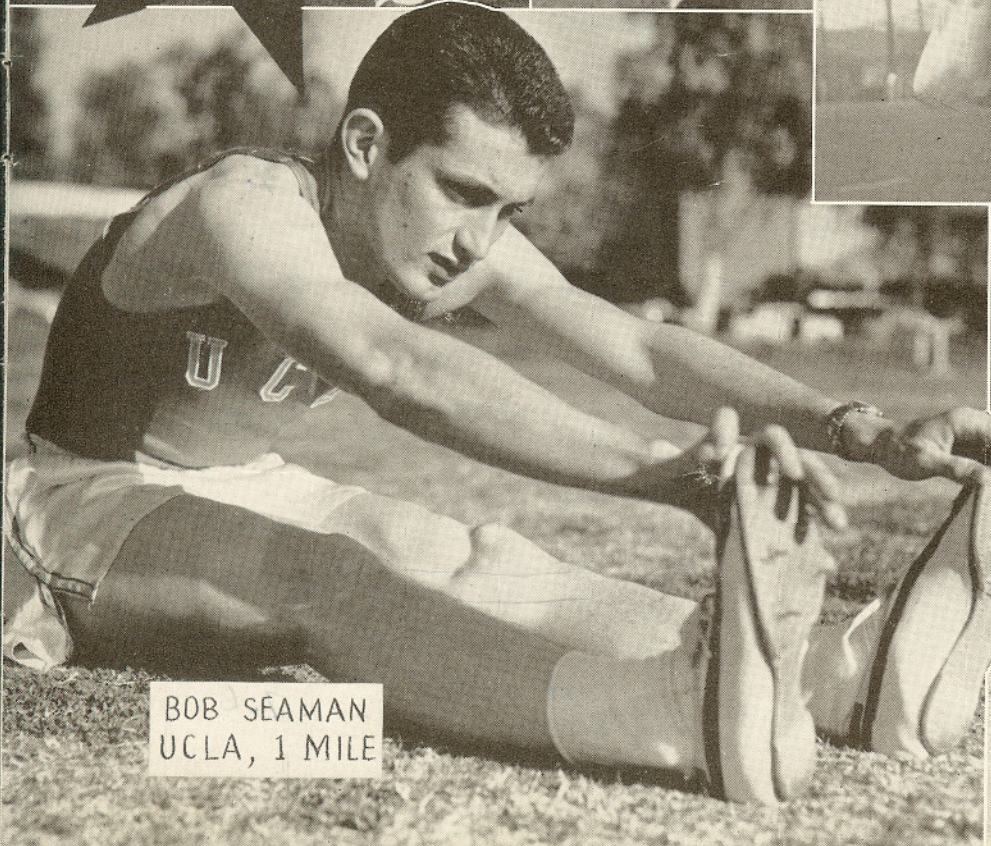


JIM BAILEY  
OREGON, 880

**P.C.C.  
STARS**



ERNIE SHELTON  
USC, HIGH JUMP



BOB SEAMAN  
UCLA, 1 MILE

# TRACK EVENTS

(Best 1955 marks prior to the NCAA meet indicated)

## 440-Yard Sprint Relay

6:00 p.m.

No. 1

Meet Record: :40.6 Big Nine (Mathis, Houden, Peters, Simpson) . . . . . 1947  
 World and U.S.  
 College Record: :40.5 Southern California (LaFond, Anderson, Jordan, Talley) 1938  
 Pending approval: :40.2 Texas (Smith, Frieden, Prewitt, Whilden . . . . . 1955  
 Stadium Record: :40.6 Big Ten (Mathis, Houden, Peters, Simpson) . . . . . 1947

### ENTRIES

PCC Team (Lane 2)

Big Ten Team (Lane 1)

Bob Gary, Washington State  
 Keith Brownsberger, Stanford  
 Pat Coyle, USC  
 Howard Bugbee, USC

Jim Golliday, Northwestern  
 Harry Nash, Minnesota  
 Bill Garner, Minnesota  
 Bob Brown, Michigan

Won by Big 10

Time 41.6

## One-Mile Run

6:10 p.m.

No. 2

Meet Record: 4:09.4 Don Lash, Indiana . . . . . 1937  
 U. S. College  
 Record: 4:00.6 Wes Santee, Kansas . . . . . 1954  
 World Record: 3:58.0 John Landy, Australia . . . . . 1954  
 Stadium Record: 4:05.5 Wes Santee, Kansas . . . . . 1954

### ENTRIES

PCC

Big Ten

Lane  
 2 2 Bill Dellinger, Oregon (4:09.0)  
 1 4 Bob Seaman, UCLA (4:01.4)  
 6 Sid Wing, USC (4:08.2)

Lane  
 1 John Moule, Michigan (4:14.8)  
 3 Rich Ferguson, Iowa (4:13.5)  
 5 Bob Dintelman, Illinois (4:21.0)

60.7  
 2:08.7  
 3:07.1  
 57.1

Won by 4

2nd 2

3rd 3

Time 4:04.2

## 480-Yard Shuttle Hurdle Relay

6:20 p.m.

No. 3

Meet Record: :56.8 Big Ten (Walker, Mitchell, Maxwell, Porter) . . . . . 1948  
 U. S. College  
 Record: :58.6 Texas (Jacques, Pack, Baggert, Gatewood) . . . . . 1940  
 Stadium Record: :57.3 PCC (McKee, Russell, Attlesley, Dixon) . . . . . 1949

### ENTRIES

PCC (Lane 3 and 4)

Big Ten (Lane 6 and 7)

Bernie Nelson, Stanford  
 Jim Ball, UCLA  
 Dave Rossellini, UCLA  
 Dean Singer, Washington

Willard Thomson, Illinois  
 Joe Savoldi, Michigan State  
 4 Milt Campbell, Indiana  
 1 Abe Woodson, Illinois

Won by B-10

2 Stevens  
 3 Matthews Time 57.6

## 440-Yard Dash

6:30 p.m.

No. 4

Meet Record: :46.3 Herb McKenley, Illinois . . . . . 1947  
 U. S. College  
 Record: :46.2 Herb McKenley, Illinois . . . . . 1947  
 World Record: :46.0 Herb McKenley, Jamaica . . . . . 1948  
 Stadium Record: :46.0 Herb McKenley, Jamaica . . . . . 1948

### ENTRIES

PCC		Big Ten	
Lane		Lane	
2	Mike Larrabee, USC (46.9)	1	Kevan Gosper, Michigan State (46.9)
4	Russ Ellis, UCLA (46.6)	3	Grant Scruggs, Michigan (48.2)
6	Bob Warwick, Calif. (48.5)	5	Ralph Fessenden, Illinois (47.3)

Won by Gosper <sup>tie</sup> 2nd Larrabee 3rd Ellis Time 47.4

## 100-Yard Dash

6:40 p.m.

No. 5

Meet Record: :09.5 Hal Davis, California, 1942 and Willie Williams, Illinois, 1953  
 U. S. College  
 Record: :09.3 Mel Patton, So. California . . . . . 1948  
 (Pending: Jim Golliday, Northwestern, 1955)  
 World Record: :09.3 Mel Patton, USA, 1948 and Hec Hogan, Australia . . . 1954  
 (Pending: Jim Golliday, USA, 1955)  
 Stadium Record: :09.4 Jim Jackson, Alameda H. S. . . . . 1954

### ENTRIES

PCC		Big Ten	
Lane		Lane	
3	Keith Brownsberger, Stanford (9.7)	2	Bill Garner, Minnesota (9.6)
5	Bob Gary, Washington State (9.7)	4	Jim Golliday, Northwestern (9.3)
7	Pat Coyle, USC (9.6)	6	Harry Nash, Minnesota (9.4)

Won by Nash 2nd Gary 3rd Coyle 9.9 Time 9-7

## 120-Yard High Hurdles

6:50 p.m.

No. 6

Meet Record: :13.8 Dick Attlesley, USC, 1950 and Jack Davis, USC . . . . . 1953  
 U. S. College  
 Record: :13.5 Dick Attlesley, USC . . . . . 1950  
 World Record: :13.5 Dick Attlesley, USA (twice) . . . . . 1950  
 Stadium Record: :13.8 Dick Attlesley, USC . . . . . 1951

### ENTRIES

PCC		Big Ten	
Lane		Lane	
2	Dave Rosellini, UCLA (14.5)	3	<sup>Woodson</sup> Joe Savoldi, Mich. State (14.2)
4	Bernie Nelson, Stanford (14.2)	5	Willard Thomson, Illinois (13.8)
6	Jim Ball, UCLA (14.2)	7	Milt Campbell, Indiana (14.2)

Won by Campbell 2nd Ball 3rd Stevens Time 14.2

## 880-Yard Run

7:00 p.m.

No. 7

Meet Record: 1:50.7 Don Gehrmann, Wisconsin . . . . . 1950  
 U. S. College  
 Record: 1:49.8 Ed Burrowes, Princeton . . . . . 1940  
 Pending approval: 1:49.1 Arnold Sowell, Pittsburgh . . . . . 1955  
 World Record: 1:48.6 Mal Whitfield, USA . . . . . 1953  
 Pending approval: 1:47.5 Lon Spurrier, USA . . . . . 1955  
 Stadium Record: 1:47.5 Lon Spurrier, Olympic Club . . . . . 1955

### ENTRIES

PCC		Big Ten	
Lane		Lane	
1	Jim Bailey, Oregon (1:51.5)	2	Pete Gray, Michigan (1:51.4)
3	Gary Gayton, Washington (1:51.9)	4	Henry Cryer, Illinois (1:51.5)
5	Doug Clement, Oregon (1:53.0)	6	Murray Keatinge, Iowa (1:52.4)

Won by Bailey 2nd Cryer 1:51.3 3rd Gray 1:52.1 Time 1:51

## 220-Yard Dash

7:10 p.m.

No. 8

Meet Record: :20.4 Hal Davis, California . . . . . 1942  
 U. S. College  
 Record: :20.2 Mel Patton, USC . . . . . 1949  
 World Record: :20.2 Mel Patton, USA . . . . . 1949  
 Stadium Record: :20.5 Hal Davis, Salinas JC . . . . . 1941

### ENTRIES

PCC		Big Ten	
Lane		Lane	
3	Walt Garrett, Stanford (21.3)	2	Harry Nash, Minnesota (21.4)
5	Bob Gary, Washington State (21.2)	4	Dick Flodin, Michigan (21.2)
7	Pat Coyle, USC (21.6)	6	Jim Golliday, Northwestern (21.3)

Won by Nash 2nd Gary 21.3 3rd Coyle 21.4 Time 21.1

## Two-Mile Run

7:20 p.m.

No. 9

Meet Record: 9:03.4 Rich Ferguson, Iowa . . . . . 1953  
 U. S. College  
 Record: 8:58.0 Wes Santee, Kansas . . . . . 1954  
 World Record: 8:40.4 Gaston Reiff, Belgium . . . . . 1952  
 Pending approval: 8:33.4 Sandor Iharos, Hungary . . . . . 1955  
 Stadium Record: 9:04.6 Leroy Weed, USC . . . . . 1941

### ENTRIES

PCC		Big Ten	
Lane		Lane	
2	Ken Reiser, Oregon (9:02.6)	1	Rich Ferguson, Iowa (9:24.4)
4	Bob Hunt, UCLA (9:04.3)	3	Karl Jonsson, Illinois (9:23.4)
6	Fernando Ledesma, USC (8:56.4)	5	Jon Dalton, Wisconsin (9:27.7)

Won by Ledesma 2nd Hunt 3rd Reiser Time 8:57.7



# 220-Yard Low Hurdles

7:35 p.m.

No. 10

Meet Record: :22.9 Earl Vickery, USC . . . . . 1938  
 World and U.S.  
 College Record: :22.3 Harrison Dillard, Baldwin-Wallace . . . . . 1947  
 Stadium Record: :22.9 Craig Dixon, UCLA . . . . . 1949

### ENTRIES

Lane	PCC	Lane	Big Ten
3	Bob Leadbetter, Washington (23.9)	2	Jack Matthews, Iowa (23.3)
5	Leon Clarke, USC (23.8)	4	<del>Willard Thomson, Illinois (23.0)</del>
7	Bernie Nelson, Stanford (24.4)	6	Les Stevens, Iowa (23.4)

Won by Matthew 23.6 2nd Clarke 23.9 3rd Nagle Time \_\_\_\_\_  
Leadbetter Clarke

# One-Mile Relay

7:45 p.m.

No. 11

Meet Record: 3:09.4 PCC (Reese, Froom, Barnes and Klemmer) . . . . . 1941  
 U. S. College  
 Record: 3:09.4 California (Reese, Froom, Barnes and Klemmer) . . . . . 1941  
 World Record: 3:08.8 USA (Cole, Mashburn, Pearman and Whitfield) . . . . . 1952  
 Stadium Record: 3:11.8 Stanford (Shaw, Clark, Williamson and Jeffrey) . . . . . 1940

### ENTRIES

PCC Team (Lane 1)	Big Ten Team (Lane 2)
Bob Warwick, California	Grant Scruggs, Michigan
Walt Garrett, Stanford	Don Ward, Indiana
Mike Larrabee, USC	Ralph Fessenden, Illinois
Russ Ellis, UCLA	Kevan Gosper, Michigan State
<u>Seaman</u>	<u>Flodin</u>

Won by \_\_\_\_\_ Time \_\_\_\_\_

# FIELD EVENTS

(Order of competition indicated)

## Pole Vault

5:45 p.m.

No. 12

Meet Record: 14' 8<sup>1</sup>/<sub>16</sub>" Don Laz, Illinois . . . . . 1951  
 U. S. College  
 Record: 15' 1<sup>3</sup>/<sub>4</sub>" Don Laz, Illinois . . . . . 1951  
 World Record: 15' 7<sup>3</sup>/<sub>4</sub>" Cornelius Warmerdam, USA . . . . . 1942  
 Stadium Record: 15' 6<sup>7</sup>/<sub>8</sub>" Cornelius Warmerdam, Olympic Club . . . . . 1942

### ENTRIES

PCC	Big Ten
1 Dave Seed, California (14')	2 Chas. Coykendall, Mich. State (13' 8 <sup>5</sup> / <sub>8</sub> " )
3 Walt Levack, USC (14' 9 <sup>3</sup> / <sub>4</sub> " )	4 Dale Foster, Illinois (13' 8 <sup>5</sup> / <sub>8</sub> " )
5 Ron Morris, USC (14' 9 <sup>3</sup> / <sub>4</sub> " )	6 Bob Appleman, Michigan (13' 8 <sup>3</sup> / <sub>4</sub> " )

Won by 14' 6<sup>1</sup>/<sub>4</sub>" Morris 2nd \_\_\_\_\_ 3rd Foster - 13' 4" Height \_\_\_\_\_  
Levack

# Shot-Put

5:45 p.m.

# No. 13

Meet Record: 56' 1 3/4" Otis Chandler, Stanford . . . . . 1950  
 U. S. College  
 Record: 59' 2 3/8" Parry O'Brien, USC . . . . . 1953  
 World Record: 60' 5 1/4" Parry O'Brien, USA . . . . . 1954  
 Pending approval: 60' 10" Parry O'Brien, USA . . . . . 1954  
 Stadium Record: 57' 4 3/4" Otis Chandler, Stanford . . . . . 1950

### ENTRIES

PCC

Big Ten

- |                                   |  |
|-----------------------------------|--|
| 1 Clyde Wetter, UCLA (54' 4 1/2") | 2 Charles Thomas, Wisconsin (50' 7 3/4") |
| 3 Don Vick, UCLA (56' 7 1/2")     | 4 Gordon Holz, Minnesota (54' 4 1/2")    |
| 5 Ray Martin, USC (57' 6 1/2")    | 6 Dave Owen, Michigan (54' 11 3/4")      |

Won by Wetter 56' 2 1/4" 2nd Holz 52' 2 1/4" 3rd \_\_\_\_\_ Distance \_\_\_\_\_

# High Jump

6:15 p.m.

# No. 14

Meet Record: 6' 11" Les Steers, Oregon . . . . . 1941  
 U. S. College  
 Record: 6' 11" Les Steers, Oregon . . . . . 1941  
 Pending: 6' 11 1/4" Ernie Shelton, USC . . . . . 1955  
 World Record: 6' 11 1/2" Walt Davis, USA . . . . . 1953  
 Stadium Record: 6' 9" Les Steers, Oregon . . . . . 1941

### ENTRIES

PCC

Big Ten

- |                                   |  |
|-----------------------------------|--|
| 2 John Stewart, Stanford (6' 5")  | 1 Howard Liverance, Michigan (6' 4 5/8") |
| 4 Floyd Jeter, USC (6' 8")        | 3 Don Hillmer, Michigan State (6' 5")    |
| 6 Ernie Shelton, USC (6' 11 1/4") | 5 Mark Booth, Michigan (6' 6")           |

Won by Shelton 6' 9" 2nd Booth 6' 6" 3rd Jeter 6' 4" Height \_\_\_\_\_

PCC - 6  
10 - 3

# Broad Jump

6:15 p.m.

# No. 15

Meet Record: 25' 6 3/8" Pat Turner, UCLA . . . . . 1940  
 World and U.S.  
 College Record: 26' 8 1/4" Jesse Owens, Ohio State . . . . . 1935  
 Stadium Record: 26' 1 3/8" Jesse Owens, Ohio State . . . . . 1935

### ENTRIES

PCC

Big Ten

- |                                     |  |
|-------------------------------------|--|
| 2 Wilbur Gary, Idaho (23' 5")       | 1 Al Paschen, Purdue (23' 1 1/2")      |
| 4 Martin Pedigo, Oregon (24' 1")    | 3 Tom Hendricks, Michigan (24' 2 1/2") |
| 6 Frank Herrmann, Stanford (24' 1") | 5 Junior Stielstra, Michigan (24')     |

Won by Paschen 24' 1/2" 2nd Pedigo 23' 11" 3rd Stielstra \_\_\_\_\_ Distance \_\_\_\_\_

# Discus Throw

6:15 p.m.

# No. 16

Meet Record: 178' 5 7/8" Sim Iness, USC . . . . . 1953  
 U. S. College  
 Record: 190' 1/2" Sim Iness, USC . . . . . 1953  
 World Record: 194' 6" Fortune Gordien, USA . . . . . 1953  
 Stadium Record: 175' 6 1/2" Dick Doyle, Olympic Club . . . . . 1951

### ENTRIES

PCC

Big Ten

- |                                |  |
|--------------------------------|--|
| 2 Don Vick, UCLA (168' 9 3/8") | 1 Bob Webb, Ohio State (150' 10 1/2")  |
| 4 Ron Drummond, UCLA (167')    | 3 Dale Yonkey, Minnesota (153' 4 3/4") |
| 6 Des Koch, USC (172' 10")     | 5 Jerry Helgeson, Minnesota (162' 10") |

Won by Koch 170' 1/2" 2nd Vick \_\_\_\_\_ 3rd Drummond \_\_\_\_\_ Distance \_\_\_\_\_

# HIGHLIGHTS OF PAST MEETS

1937—Los Angeles, California  
**Score: PCC 92, Big Ten 44**

1938—Evanston, Illinois  
**Score: PCC 101, Big Ten 34**

1939—Berkeley, California  
**Score: PCC 94 $\frac{1}{3}$ , Big Ten 36 $\frac{2}{3}$**

1940—Evanston, Illinois  
**Score: PCC 96, Big Ten 40**

1941—Los Angeles, California  
**Score: PCC 80, Big Ten 56**

1942—Evanston, Illinois  
**Score: Big Ten 69 $\frac{2}{3}$ , PCC 57 $\frac{1}{3}$**

1947—Berkeley, California  
**Score: Big Nine 94 $\frac{1}{2}$ , PCC 37 $\frac{1}{2}$**

1948—Evanston, Illinois  
**Score: Big Nine 92 $\frac{1}{4}$ , PCC 39 $\frac{3}{4}$**

1949—Berkeley, California  
**Score: Big Nine 70, PCC 62**

1950—Madison, Wisconsin  
**Score: PCC 69, Big Nine 63**

1951—Eugene, Oregon  
**Score: PCC 77 $\frac{1}{2}$ , Big Ten 54 $\frac{1}{2}$**

1953—Ann Arbor, Michigan  
**Score: PCC 82 1/6, Big Ten 49 5/6**

1954—Evanston, Illinois  
**Score: Big Ten 74, PCC 58**

Lee Orr, George Boone, Curtis Ledford and Jack Weiershauser of the PCC squad set a world record of :40.7 in the 440 relay. Indiana's Don Lash won the mile in 4:09.4, oldest meet mark still on the books.

The Westerners scored the highest point total in the meet's history. California's Arnold Nutting won the 100 and broad jump at :09.7 and 25'2". Chuck Fenske and Walt Mehl nailed the mile and two-mile for Wisconsin.

Pete Zagar of Stanford won the discus for the third year in a row and USC's Lou Zamperini added the mile win to his NCAA and IC4A titles. Clyde Jeffrey of Stanford repeated his sprint double and UCLA swept the broad jump with Pat Turner, Jack Robinson and Bill Lacefield. The Big Ten mile relay team clocked a swift 3:11.7.

Two world records fell as Les Steers high jumped 6'11" and the California mile relay team blazed to 3:09.4, edging USC with the Big Ten team third. The midwesterners scored their first win of the series, sparked by Bob Wright's :14.0 and :23.0 hurdle double. Hal Davis of California set meet standards at :09.5 and :20.4 in the sprints.

Illini Herb McKenley erased the world 440-yard record with a :46.3 clocking as his teammates broke five meet marks, winning all but three events in scoring their most convincing victory.

Northwestern's Olympic champ-to-be Bill Porter starred for the Big Nine with :13.9 and :23.1 hurdles wins.

Going one-two in the 880 and mile and sweeping the two-mile, midwesterners notched a narrow victory in a meet decided on the mile relay. Don Gehrmann doubled in 4:16.5 and 1:52.2, with a relay lap for good measure.

Don Gehrmann bowed out of collegiate competition with a brilliant 880-mile double, clocking 4:11.1 and 1:50.7. Dick Attlesley's 13.8 and :23.2 hurdling sparked the Coast to the closest win of the series.

Don Laz's 14' 8 $\frac{1}{16}$ " vault in vain as the Coast ground out another sizeable win. Jack Davis of SC took up where Dick Attlesley left off winning both hurdles.

Jack Davis repeated with fine hurdle victories in :13.8 and :23.0. Iowa's Rich Ferguson scorched to a 9:03.4 two-mile to continue the Big Ten's dominance in that event.

Big Ten running power turned the tide for the midwest. Oregon's Bill Dellinger broke a PCC losing streak in the mile which extended back to 1941, winning in 4:10.6.

## COACHES

### BIG TEN

Illinois.....	Leo Johnson
Indiana.....	Gordon Fisher
Iowa.....	Francis Cretzmeyer
Ohio State.....	Larry Snyder
Michigan.....	Don Canham
Michigan State.....	Karl Schlademan
Minnesota.....	Jim Kelly
Northwestern.....	Rut Walter
Purdue.....	Dave Rankin
Wisconsin.....	Riley Best

### PCC

California.....	Brutus Hamilton
UCLA.....	Elvin Drake
Idaho.....	Joe Glander
Oregon.....	Bill Bowerman
Oregon State.....	Hal Moe
Southern California.....	Jess Mortensen
Stanford.....	Jack Weiershauser
Washington.....	Stan Hiserman
Washington State.....	Jack Mooberry

# SCORE CARD

	EVENT	1ST	2ND	3RD	PCC	BT
1.	Sprint Relay					
2.	Mile Run					
3.	Shuttle Hurdle Relay					
4.	440-Yard Dash					
5.	100-Yard Dash					
6.	120-Yard Hurdles					
7.	880-Yard Run					
8.	220-Yard Run					
9.	Two-Mile Run					
10.	220-Yard Hurdles					
11.	Mile Relay					
12.	Pole Vault					
13.	Shot-Put					
14.	High Jump					
15.	Broad Jump					
16.	Discus					
<b>TOTALS</b>						