

Press Guide

Baseball

Cal



1972

1972

Cal
Track
and
Field



Press Guide

1972 TRACK SCHEDULE

| | |
|------------------------------|------------------|
| SACRAMENTO STATE | |
| ATHENS CLUB | EDWARDS STADIUM |
| SAN JOSE STATE | EDWARDS STADIUM |
| Easter Relays | Santa Barbara |
| Arizona State | Tempe |
| UCLA | LA Coliseum |
| WASHINGTON & OREGON STATE | EDWARDS STADIUM |
| Southern Cal | Stanford Stadium |
| San Antonio Relays | Walnut |
| STANFORD | EDWARDS STADIUM |
| West Coast Relays | Fresno |
| Pacific-8 Championships | Stanford |
| California Relays | Modesto |
| KENNEDY GAMES | EDWARDS STADIUM |
| A A U Championships | Seattle |
| Final Olympic Trials | Eugene |

ATHLETIC STAFF

Head Track Coach:

| | | |
|----------------------|----------|----------|
| DAVE MAGGARD | 284-4230 | 642-3158 |
| Director BOB STEINER | 534-5134 | 642-5363 |
| DAVE KAYFES | 237-6875 | 642-5364 |

TABLE OF CONTENTS

| | |
|-------------------------|-------|
| Meet Records | 13-18 |
| Pac-8 Champions | 14 |
| All-Time Lists | 19-20 |
| Record Holders | 21-22 |
| Olympians | 22 |
| Edwards Stadium | 23 |
| Calif. State Records | 2 |
| Edwards Stadium Records | 3 |
| Event Summary | 4-5 |
| Team Roster | 6 |

HEAD COACH DAVE MAGGARD

In his third season as Cal's fourth head track coach, Maggard has continued the great tradition of his predecessors.

His team won the NCAA championship in his rookie year as head coach. An Olympic shot putter in 1968, and still the UC shot record holder, Maggard, served one season (1969) as assistant coach to Sam Bell after three outstanding years at Los Altos High School (1966-68) and one year (1965).

Maggard received his AB in PE after coming to Berkeley from Modesto HS. He earned one football letter as well as awards at Cal.

Personable, direct and intelligent, Maggard has many of the great qualities of his father, the late Brutus Hamilton. Born 1-12-40 in Modesto, wife, the former Carolyn Johnson, have two sons, Jr., 8, and Darin, 5.



ASSISTANT COACH

EDDIE HART: Ranks second only to Hammon as the most productive and competitive sprinter in the history of the UC. JC champion from Contra Costa, a graduate of UC High School, 22 year old Hart won the 100 yard championship and anchored the Cal 440 relay victory in that meet. Overcoming injuries, he was runner-up and third place finisher in the 200 yard collegiate championship meet. A Physical Education major, Hart has his eyes on the 1972 Olympics in Munich this summer, and a full-time coach during the Games. Hart is the national 100 yard holder (9.2), and co-holds the Cal 100 yard record as well as holding outright the Bear 220 record.

RICH DUNN: Second greatest triple jumper in the history of the UC. It was his stunning second place finish in the 1967 world title which gave California the points to win the world title (later voided). With a best of 50-11 1/2, Dunn is only behind Jim Fraser on the Cal All-Time list. He also placed third in the Pacific-8 championship. A graduate of Leigh High School in San Jose, Valley JC, Dunn is a Physical Education major.

UNIVERSITY OF CALIFORNIA TRACK & FIELD RECORDS

RUNNING EVENTS

| | | | | |
|--------|--------|-----------------|-------------------|------|
| 100m | 9.3 | Leamon King | WCR, Fresno | 1956 |
| 100m | 9.8 | Isaac Curtis | Dual, Berkeley | 1970 |
| 100m | 10.1 | Eddie Hart | PAC-8, UCLA | 1970 |
| 200m | 20.4 | Leamon King | Ontario, Calif. | 1956 |
| 200m | 20.5 | Al Davis | PCC-B10, Evanston | 1942 |
| 200m | 20.5 | Eddie Hart | PAC-8, UCLA | 1970 |
| 400m | 46.3 | Steve Archibald | AAWU, Los Angeles | 1964 |
| 400m | 46.3 | Forrest Beaty | NCAA, Berkeley | 1965 |
| 400m | 46.0 | Grover Klemmer | AAU, Philadelphia | 1941 |
| 400m | 46.0 | Jack Yerman | FOT, Stanford | 1960 |
| 400m | 46.0 | Dave Archibald | NCAA, Eugene | 1964 |
| 400m | 46.0 | Don Bowden | NCAA, Austin | 1957 |
| 400m | 46.0 | Jerry Siebert | FOT, Stanford | 1960 |
| 800m | 1:46.5 | Don Bowden | Oslo, Norway | 1955 |
| 800m | 1:46.5 | Don Bowden | PA, Stockton | 1957 |
| 1 Mile | 3:49.0 | Bob Waldon | Dual, Berkeley | 1968 |
| 1 Mile | 3:49.0 | Bob Waldon | Tri., Berkeley | 1969 |
| 1 Mile | 3:49.0 | Price | Berkeley | 1966 |
| 1 Mile | 3:49.0 | Price | Berkeley | 1966 |

HURDLES

| | | | | |
|------|------|---------------|--------------------|------|
| 200m | 22.7 | Earl Kirtman | PAC-8, Berkeley | 1968 |
| 200m | 22.7 | Willie White | Compton | 1958 |
| 200m | 22.7 | Rich Harding | Berkeley | 1963 |
| 400m | 49.8 | Paddy McCrary | WCR, Fresno | 1967 |
| 400m | 49.8 | Paddy McCrary | FOT, S. Lake Tahoe | 1968 |
| 400m | 49.8 | Bob Price | AAU, Bakersfield | 1967 |

FIELD EVENTS

| | | | | |
|------------|----------|------------------|----------------|------|
| Shot Put | 59-8 1/2 | Dave Maggard | NCAA, Eugene | 1962 |
| Shot Put | 59-8 1/2 | Jim Penrose | Dual, SC | 1971 |
| Shot Put | 59-8 1/2 | Bruce Kennedy | Dual, Berkeley | 1970 |
| Shot Put | 59-8 1/2 | Clarence Johnson | Dual, Stanford | 1967 |
| Pole Vault | 13-6 1/2 | Greg Miguel | Modesto Relays | 1967 |
| Pole Vault | 13-6 1/2 | Arnold Nutting | NCAA, Berkeley | 1937 |
| Pole Vault | 13-6 1/2 | Jim Fraser | Dual, UCLA | 1971 |

RELAYS

| | | | |
|--------|------|---|------|
| 4x100m | 39.8 | Randy Smyth, Joe Richards, Jim Smith, Dave Masters, LA Coliseum | 1969 |
| 4x100m | 39.8 | Don Couser, Isaac Curtis, Dave Masters, Eddie Hart, UCLA | 1970 |
| 4x100m | 39.8 | Randy Smyth, Joe Richards, Jim Smith, Dave Masters, WCR, Fresno | 1969 |
| 4x100m | 39.8 | Al Courchesne, Dave Fishback, Forrest Beaty, Dave Archibald, NCAA, Eugene | 1964 |
| 4x100m | 39.8 | Maynard Orme, Jerry Siebert, Jack Yerman, Don Bowden, LA Coliseum | 1958 |
| 4x100m | 39.8 | Jack Yerman, Monte Upshaw, Willie White, Don Bowden, Modesto Relays | 1958 |
| 4x100m | 39.8 | Larry Hengl, Jim Smith, Pat Weddle, Devone Smith, Modesto Relays | 1968 |
| 4x100m | 39.8 | Art Stewart, Maynard Orme, Bob House, Don Bowden, WCR, Fresno | 1957 |

EDWARDS STADIUM

RUNNING

| | | | |
|---------|---------|-----------------------------|------|
| 100y | 9.3 | Kirk Clayton (SJS) Du | 1970 |
| 100y | 9.3 | Isaac Curtis (Cal) Du | 1970 |
| 100m | 10.1 | Lennox Miller (SC) NC | 1970 |
| 100m | 10.1 | Jerry Bright (ASU) NC | 1970 |
| 220t | 20.4 | John Carlos (SIU) | 1970 |
| 440y | 45.7 | Glenn Davis (Ohio Star) CAA | 1970 |
| 400m | 45.0 | Lee Evans (SJS) NC/A | 1970 |
| 880y | 1:47.5 | Lon Spurrier (Olympic) C | 1970 |
| 800m | 1:46.4 | George Kerr (Illinois) NC | 1970 |
| 1500m | 3:36.1 | Jim Ryun (Kansas Frosh) | 1970 |
| 1 Mile | 3:51.3 | Jim Ryun (Kansas Frosh) | 1970 |
| 2 Mile | 8:45.8 | Bob Boglione (ASU) | 1970 |
| 3 Mile | 13:05.2 | Steve Prefontaine (Oreg) | 1970 |
| 5000m | 13:30.4 | Steve Prefontaine (Oreg) | 1970 |
| 6 Mile | 27:50.0 | Frank Shorter (Fla. TC) SR | 1970 |
| 10,000m | 28:38.6 | Rashid Sharafyettin | 1970 |
| 3000SC | 8:41.0 | Romualdas Bite (US) VOS | 1970 |

HURDLES

| | | | |
|--------|-------|-------------------------------|------|
| 120HH | 13.3 | Earl McCullouch (SC) Wal | 1970 |
| 220LH | 22.7t | Charlie Tidwell (Kansas) NCAA | 1970 |
| 330 IH | 37.5 | Mike Douglas (BYU) Triangula | 1970 |
| 400mIH | 49.8 | Dave Hemery (Boston U) A | 1970 |
| 440 IH | 50.5 | Wes Williams (SD State) F | 1970 |

FIELD

| | | | |
|-------------|-----------|----------------------------------|------|
| Shot Put | 71-4 1/4 | Randy Matson (Texas Stride) Lady | 1970 |
| Discus | 208-10 | Jay Silvester (Unattached) A | 1970 |
| Javelin | 293-1 | Janis Donins (USSR) V. | 1971 |
| Hammer | 233.6 | Tom Gage (NYAC) Kenned | 1971 |
| High Jump | 7-6 1/4 | Pat Matzdorf (Wisconsin) V. | 1971 |
| Pole Vault | 17-5 | Dave Roberts (Rice) Kenned | 1971 |
| Long Jump | 26-11 1/2 | Stan Whitley (Kansas) Kenned | 1971 |
| Triple Jump | 54-7 3/4 | Art Walker (SC Striders) A-A | 1971 |

RELAYS

| | | | |
|--------|--------|--|------|
| 440 | 39.3 | SC (McCullouch, Kuller, Sim Miller) PAC-8 | 1968 |
| 400m | 39.1 | US (Anderson, Busby, Jones, All-American Invitational World All-Stars (Daley, Lav. Quarrie, Miller) USSR | 1971 |
| 1 Mile | 3:04.7 | US (Evans, Smith, Frey, Lew) All-American Invitational | 1971 |

DECATHLON

| | | |
|-------------|---------------------|------|
| 7698 points | Russ Hodge vs. USSR | 1971 |
|-------------|---------------------|------|

EVENT SUMMARY

| | '71 BEST | DUAL PTS. | ALL-TIME BEST |
|-----|----------|-----------|---------------|
| 10 | | | |
| 11 | | | |
| 12 | | | |
| 13 | | | |
| 14 | | | |
| 15 | | | |
| 16 | | | |
| 17 | | | |
| 18 | | | |
| 19 | | | |
| 20 | | | |
| 21 | | | |
| 22 | | | |
| 23 | | | |
| 24 | | | |
| 25 | | | |
| 26 | | | |
| 27 | | | |
| 28 | | | |
| 29 | | | |
| 30 | | | |
| 31 | | | |
| 32 | | | |
| 33 | | | |
| 34 | | | |
| 35 | | | |
| 36 | | | |
| 37 | | | |
| 38 | | | |
| 39 | | | |
| 40 | | | |
| 41 | | | |
| 42 | | | |
| 43 | | | |
| 44 | | | |
| 45 | | | |
| 46 | | | |
| 47 | | | |
| 48 | | | |
| 49 | | | |
| 50 | | | |
| 51 | | | |
| 52 | | | |
| 53 | | | |
| 54 | | | |
| 55 | | | |
| 56 | | | |
| 57 | | | |
| 58 | | | |
| 59 | | | |
| 60 | | | |
| 61 | | | |
| 62 | | | |
| 63 | | | |
| 64 | | | |
| 65 | | | |
| 66 | | | |
| 67 | | | |
| 68 | | | |
| 69 | | | |
| 70 | | | |
| 71 | | | |
| 72 | | | |
| 73 | | | |
| 74 | | | |
| 75 | | | |
| 76 | | | |
| 77 | | | |
| 78 | | | |
| 79 | | | |
| 80 | | | |
| 81 | | | |
| 82 | | | |
| 83 | | | |
| 84 | | | |
| 85 | | | |
| 86 | | | |
| 87 | | | |
| 88 | | | |
| 89 | | | |
| 90 | | | |
| 91 | | | |
| 92 | | | |
| 93 | | | |
| 94 | | | |
| 95 | | | |
| 96 | | | |
| 97 | | | |
| 98 | | | |
| 99 | | | |
| 100 | | | |

DUAL POINTS LOST: Eddie Hart, 48 3/4 ('70 PAC-8 & NCAA 100 champ; '71 PAC-8 100 runner-up, 3rd NCAA 220); Dave Masters, 38-3/4 (3rd '70 PAC-8 220).

CURTIS was the 3rd PAC-8 & NCAA 100 runner-up, 3rd PAC-8 100 '71; 4th NCAA 220 in '70. BURNS was the State HS 220 champ and 100 runner-up; BURNS was the Cerrito's State record setting HS 220 relay team.

| | | | |
|------------------------|-------|-------------|-------|
| ED BARNER (Sr.) | 47.3 | (31 1/4) | 47.1 |
| ED BARNER (Sr.) | 48.0 | (28 1/4) | 47.6 |
| JIM ANDERSON (Sr.) | 48.7 | (17 1/4) | 47.8 |
| MALCOLM ANDERSON (Sr.) | 48.3r | (1 1/4) | --- |
| DAN STODOLSKY (Sr.) | --- | (3 3/4 '70) | 48.1r |

DUAL POINTS LOST: Bruce Kennedy, 29 3/4; Roddy Lee, 1 1/4.

BROWN was the PAC-8 champ, was undefeated in three races, and anchored Cal's relay team to the 1st place in the PAC-8. BONNER was 6th in the '70 PAC-8 meet.

| | | | |
|-------------------|--------|------|--------|
| 830 | | | |
| **JOHN DREW (Sr.) | 1:48.6 | (20) | 1:48.6 |
| RICH DREW (Sr.) | 1:48.9 | (28) | 1:48.9 |
| DENNIS DREW (Sr.) | 1:53.5 | (9) | 1:52.1 |
| BOB BROWN (Sr.) | --- | --- | 1:54.6 |
| BOB BROWN (Sr.) | --- | --- | 1:53.0 |
| BOB BROWN (Sr.) | 1:54.8 | --- | Same |

DUAL POINTS LOST: None.

BROWN was the PAC-8 champ and NCAA runner-up as a frosh; DREW was undefeated in dual meets, placed 2nd in the PAC-8 (5th in '70) and was an NCAA finalist.

| | |
|------|--|
| 1-21 | |
| 3-21 | |
| 5-21 | |

| | | | |
|----------------------------|----------------|------|--------------|
| MILE, 2 K, 5 MILE | | | |
| JOHN DREW (Sr.) | 4:03.7 | (20) | Same |
| CLIFF WEST (Sr.) | 4:06.0, 9:01.4 | (26) | 4:04.4, Same |
| EUGENE MAYA (Sr.) | 4:10.4, 9:07.2 | (5) | Same |
| RANDY HANSEN (Sr.) | 4:13.6 | (5) | Same |
| WOLFGANG SCHMULLTICZ (Fr.) | 9:03.6 | --- | Same |
| EMILYON DAVIS (Fr.) | 9:05.0 | --- | Same |
| BOB MAXWELL (Fr.) | 9:12.0 | --- | Same |

DUAL POINTS LOST: Steve Carroll, 22; Vic Cary, 11; Stan Vukajlovich, 7.

DREW has been a two year PAC-8 scorer. DREW won three mile races in four dual meets.

'71 BEST DUAL ALL-TIME BEST

| | | | |
|-----------------------|------------|----------|------------|
| HURDLES | | | |
| *ROSS BROSIUS (Sr.) | 14.4, 51.6 | (52) | 14.2, 51.6 |
| *KERRY HAMPTON (Soph) | --- | (14 '70) | 14.2 |
| JIM PETRALIA (Jr.) | 52.1 | --- | 52.1 |

DUAL POINTS LOST: Roddy Lee, 54 (3rd '71 PAC-8 IH).

BROSIUS was 6th and 4th in the PAC-8 HH & IH; HAMPTON was the 1st and 2nd in the PAC-8 HH & IH; PETRALIA was the '71 State JC champion.

| | | | |
|---------------------|------------------|------|------------------|
| SHOT & DISCUS | | | |
| **JIM PENROSE (Sr.) | 52-6, 191-4 | (40) | 52-6, 191-4 |
| *CHRIS ADAMS (Soph) | 53-9 1/4, 176-11 | (25) | 53-9 1/4, 176-11 |
| ROLIN LUKA (Jr.) | 56-10 | --- | 56-10 |
| JON GLEDHILL (Sr.) | 167-7 | (2) | 167-7 |

DUAL POINTS LOST: Terry Lewis, 40 (4th PAC-8 shot).

PENROSE was second in the PAC-8 discus, led the National record holder; ADAMS placed 4th in the PAC-8 discus, the champion and National prep record holder.

| | | | |
|-----------------------|-------|------|-------|
| JAVELIN | | | |
| **BRUCE KENNEDY (Jr.) | 244-9 | (44) | 244-9 |

DUAL POINTS LOST: None.

KENNEDY was 2nd in the PAC-8, an NCAA finalist for the 1st and 2nd in the PAC-8, and is the Cal record holder.

| | | | |
|-------------------------|---------------------|-----|---------------------|
| LONG JUMP & TRIPLE JUMP | | | |
| CRAIG CONWAY (Frosh) | 24-4w, 49-9 | --- | 24-4w, 49-9 |
| JULIAN LUCAS (Soph) | 22-6 1/4, 47-1 1/4w | (1) | 22-6 1/4, 47-1 1/4w |

DUAL POINTS LOST: Jim Fraser, 57 (three time PAC bests of 25-2 and 53 1/4, the latter a Cal record); Steve Rogers (scorer); Rich Dunn, 20 ('70 NCAA TJ runner-up).

| | | | |
|-------------------|------|-----|------|
| POLE VAULT | | | |
| MIKE BARTEL (Jr.) | 16-1 | --- | 16-1 |
| ED OTTER (Jr.) | 15-6 | --- | 15-6 |
| MIKE WEIDIG (Jr.) | 15-0 | --- | 15-0 |

DUAL POINTS LOST: Charlie Gieck, 20; Paul Conroy, 3.

WEIDIG and BARTEL tied for 2nd in the State JC championship, and is the NorCal championship meet.

| | | | |
|-------------------------|-----|----------|-----|
| HIGH JUMP | | | |
| *DAVE FISHBAUGH (Sr.) | 6-8 | (32) | 6-8 |
| *MAL MAC FARLANE (Soph) | 6-6 | (16 1/2) | 6-6 |

DUAL POINTS LOST: None

GOLDEN BEAR TRACK ROSTER

ts Ht. Wt. A Class Hometown

| | | | | | | |
|-----|----------|-------|-----|-------|----------------|-----------------------|
| *C | Weights | 6-0 | 195 | 20 | Soph | Los Altos |
| *E | Distance | 5-11 | 150 | 21 | Jr. | Santiago, Chile |
| | | 5-10 | 165 | 20 | Soph | Los Altos |
| | | 6-0 | 150 | 20 | Jr. | San Francisco |
| | PV | 5-11 | 170 | 25 | Jr. | Bakersfield |
| | Sprints | 6-1 | 190 | 18 | Frosh | San Bruno |
| | 40 | 6-1 | 180 | 20 | Jr. | Loomis |
| | Hurdles | 6-0 | 180 | 21 | Sr. | Pear Blossom |
| | 40-880 | 5-10½ | 140 | 20 | Soph | Los Altos |
| | 6-0 | 6-0 | 155 | 22 | Jr. | Ventura |
| | Sprints | 6-2 | 185 | 19 | Frosh | El Cerrito |
| | LJ TJ | 6-2 | 170 | 18 | Frosh | Cupertino |
| | Sprints | 6-1 | 195 | 21 | Jr. | Santa Ana |
| | Distance | 5-10 | 135 | 18 | Frosh | Pasadena |
| | 6-0 | 170 | 22 | Sr. | Houston, Texas | |
| | 5-11 | 165 | 21 | Sr. | Castro Valley | |
| | 6-1 | 150 | 21 | Sr. | Folsom | |
| | 6-0 | 210 | 21 | Sr. | San Leandro | |
| | HJ | 6-1 | 195 | 21 | Soph | San Francisco |
| | Sprints | 6-1 | 190 | 20 | Soph | Danville |
| | Javelin | 6-1 | 215 | 20 | Jr. | Salisbury, Rhoderia |
| | J, TJ | 5-6 | 150 | 19 | Soph | Palo Alto |
| | Shot | 6-6 | 280 | 21 | Jr. | Concord |
| | HJ | 6-1 | 175 | 20 | Soph | Melbourne, Australia |
| | Distance | 5-7 | 138 | 19 | Frosh | Don Mills, Ont., Can. |
| | 6-2 | 158 | 18 | Frosh | Palo Alto | |
| | 880 | 5-9 | 134 | 18 | Frosh | Pleasant Hill |
| | PV | 6-1 | 180 | 21 | Jr. | Oakland |
| | Weights | 6-3½ | 230 | 21 | Sr. | Belmont |
| | 440IH | 5-11 | 20 | Jr. | Sunnyvale | |
| | Distance | 5-10 | 145 | 19 | Frosh | San Francisco |
| | Sprints | 6-1 | 190 | 23 | Sr. | Lake, Charles, La. |
| | 880 | 6-2 | 145 | 22 | Sr. | El Cerrito |
| | 440 | 6-1 | 155 | 20 | Sr. | El Cerrito |
| | 440 | 5-11 | 165 | 21 | Soph | El Cerrito |
| | PV | 5-10 | 155 | 20 | Jr. | Sacramento |
| **C | Distance | 5-9 | 140 | 21 | Sr. | Sacramento |

* Indicates number of varsity letters won

BEAR THUMB

CHRIS ADAMS, discus, sophomore ... national high school discus record holder at 201-3 ... scored 25 points in dual meets, including one point in his only shot put try ... placed fourth in PAC-8 discus championships ... had bests of 176-11 and 53-9¼ ... two time Cal State prep champion for Los Altos HS ... may have decathlon potential as he has a 9.8 100 to his credit ... Civil Engineering major ... born 1-26-52 in Palo Alto.



EUGENIO AMAYA, distance, junior ... ran 4:10.4 and 9:07.2 last year after being injured much of freshman year ... second in state prep championship mile and fifth in Golden West for Burlingame HS ... Psychology major ... born 2-26-51 in Santiago, Chile.



JIM ANDREW, 440, sophomore ... scored 17 a member of the mile relay team ... clocked after getting a 47.8 as a prep at Los Altos ... ran in the state 440 and ran on the winning mile relay in 12-30-51 in Seattle, Washington.

MIKE BARTEL, pole vault, junior ... best second in the State JC championships ... Bakersfield JC team ... service veteran ... HS in Bakersfield ... Economics major who ... born 6-24-46 in Bakersfield.



CHUCK BOMMARITO, Sprints, freshman ... State prep 220 champion last year and 100 runner-up ... bests of windy 9.5 and 21.2 with legal 9.6 and 21.4, also 48.3 relay leg ... 3rd (100) and 2nd (220) in state meet as a junior at Crestmoor HS ... Physical Education major ... born 8-30-53 in San Francisco.



ED BONNER, 440, junior ... scored $28\frac{1}{4}$ dual meet points last year after tallying $46\frac{1}{4}$ as a freshman ... ran 48.0 last year as compared to 47.6 the year before when he scored in 6th place in the PAC-8 championships ... ran on Cal's third place PAC-8 mile relay team ... 4th for Del Oro HS in 1969 state championship 440 ... the "Bald Eagle" ... also has a 21.4 best 220 ... Criminology major ... born 6-5-51 in Nevada City.



ROSS BROSIUS, hurdler, senior ... 4th leading dual meet scorer with 52 points last year ... won HH vs WSU and UCLA and IH races vs. Oregon and WSU ... 6th in the HH and 4th in the IH in the PAC-8 meet ... bests of 14.3 and 51.6 ... football squad member last Fall ... prepped at Palmdale HS and went to Antelope Valley JC ... born 4-5-50 in Stillwater, Okla.



RICK BROWN, 440-880, sophomore ... PAC-8 champion and NCAA runner-up in the halfmile as a freshman last year ... clocked 1:48.9 ... undefeated in three quartermiles with a best 47.3 ... lost just one dual 880, and that to teammate Drew ... led the team in dual meet scoring with $59\frac{1}{4}$ points ... anchored mile relay team to third in the PAC-8 ... only man in Cal history to win the state HS 440, 880 crowns and also anchored

the mile relay team to victory for championship winning Los Altos HS ... named prep "Track Athlete of the Year" for 1970 by T&FN ... has all-time bests of 47.1 and 46.5 ... born 2-9-52 in Miami, Florida.

SAMMY BURNS, sprints, frosh ... 6th in both State HS championship meet sprints after fighting injury all of the year ... bests of 9.5 and 21.3 ... two time State meet finalist in both sprints and double NCS champ as a junior ... frosh football numeral winner who set yearling record for pass receiving yards ... Psychology major ... ran for Hale Roach at El Cerrito HS and anchored that team to State record in 440 relay championship run ... born 1-28-53 in Oakland.



CRAIG CONWAY, LJ, TJ, frosh placed second in the Golden West Invitational triple jump ... bests of 24-4 and $49-9\frac{1}{2}$ (49-11 $3/4$ w) and was league champion for Cupertino HS ... 9th longest prep triple jumper of all-time ... Music major ... born 6-18-53 in Seattle, Washington.




ISAAC CURTIS, 100-200, junior PAC-8 and NCAA 100 runner-up as a freshman (also 4th in NCAA 220 and second man on winning 440 relay team) ... despite injuries got in for a third in the 1971 PAC-8 100 and anchored sprint quartet to third place, getting the baton in last place ... America's 7th ranked 100 man in 1970 ... co-holds Cal 100 record at 9.3, and has a 220 best of 20.8 ... very versatile athlete who has been an outstanding griddier for two years at Cal ... CIF low hurdle champion as Ana HS, sat out all of senior year with a leg ... born 10-20-50 in Santa Ana.




EMERSON DAVIS, distance, freshman ... 1:9:05.0 for Pasadena HS last year ... won varsity letter this past fall ... Mt. SAC two mile ... Physiology major ... born 5-16-53 in Pasadena.

Cal and ... Country ...




JOHN DREW, 880-mile, senior ... two year letterman who clocked 1:48.6 and 4:03.7 to earn 3rd and 2nd place listings on Cal's all-time performers list for the 880 and mile ... PAC-8 halfmile runner-up to teammate Brown ... got a win over Brown in UCLA dual ... won mile races against SJS and SC, and was undefeated in three dual meet 880's ... NCAA finalist last year ... 5th as a soph in the PAC-8 880 ... national HS freshman record holder world 15 year age group mile record ... was state prep mile champ in 1967 and 8 ... scored 40 dual meet points last year ... 1968 Golden West 880 champion at major ... born 12-7-49 in Houston, Texas.



DAVE FISHBAUGH, high jump, senior ... best of 6-8, scored 32 dual meet points last year after transferring from Chabot College where he twice won conference championships ... NCS prep champ for Castro Valley HS ... won last year against SJS and Stanford, and placed second vs. Oregon State & Arizona State, SC and Oregon ... English major ... born 12-11-50 in Toledo, Ohio.

KERRY HARTMAN, high hurdles, junior ... ran 14.2 as a freshman last year ... 1968 state prep champion for frosh class record holder at 14.2 ... 2nd in sophomore ... born 12-31-50 in San Francisco.



BRUCE KENNEDY, javelin, junior ... UC record holder at 249-10 which he set as a freshman ... threw 244-9 last year and placed second in PAC-8 title meet and was an NCAA finalist for the second straight year ... undefeated against six PAC-8 foes last year and scored 44 dual meet points after scoring 41 as a freshman ... Rhodesian national champion and record holder and South Africa junior champion from Salisbury, Rhodesia ... has six of the top

10 throws in Cal history ... outstanding student in Business Administration ... born 3-25-51 in Fort Victoria, Rhodesia.


JULIAN LUCAS, LJ-TJ, sophomore ... can sprint and quartermile as well ... 123-3 (LJ), 9.8 (100), 18.9 (180 LH) and 4 letter by running on third place sprint re championship meet ... born 6-16-52 in

ROLIN LUKA, shot put, junior ... put last year though ineligible ... frosh class ... missed much of sophomore year with injury ... 1968 state prep title meet and 5th in the Business Administration major ... born in San Francisco.

MAL MAC FARLANE, high jump, sophomore ... last year and placed 2nd vs. Stanford ... dual meet points ... lifetime best of 6-9 as Australia where he was the schoolboy Administration major ... born 5-15-51 in

BRIAN MAXWELL, distance, freshman ... 30.08.4 six mile as a prep at Victoria ... 4:17.8 mile last year ... qualified for Cal trials and finished seventh at 10,000 ... major ... born 3-14-53 in London, England

ED OTTER, pole vault, junior ... transfer where he vaulted 15-6 before being hurt just before the 1968 Cal championships ... coach Jim Co. from a 13-11 vaulter when he was at Skyline Education major ... Delta Upsilon fraternity ... in Oakland.



JIM PENROSE, weights, senior ... UC discus record holder at 191-4 ... second in the PAC-8 championship last year and an NCAA finalist (led the qualifying round) ... scored 40 dual meet points last year after scoring 41 in his sophomore year ... has broken the Cal discus record five times in raising it almost 11 feet ... lost only one PAC-8 dual meet last year ... has the top eight throws in Cal history ... 2nd in 1968 state HS meet and was the Golden West Champion as a Carlmont HS graduate ... Economics major ... born 4-29-50 in San Francisco.



JIM PETRALIA hurdles, junior ... State JC champion last year at 440 IH ... has lifetime bests of 14.4 and 52.2 ... prepped at Fremont HS in Sunnyvale and attended DeAnza JC ... Physical Education major ... born 7-13-51 in Burbank.

MIKO LEWICZ, distance, frosh ... 6th in the State ... 9:03 clocking ... AAA champion ... born 2-9-53 in Munich,

MIKO LEWICZ, senior ... Scored 15 3/4 points last year ... logged 9.8 and ... earned a football scholarship as a running back and kick returner ... born 8-25-48 in Opelousas, La.

MIKO LEWICZ, junior ... tied for second in the ... best of 15 feet at American ... he was coached by former Cal halfback ... born 11-28-51 in Pasadena.

CLIFF WEST, distance, senior ... two year letterman with lifetime bests of 4:04.4 and 9:01.4 ... scored 26 dual meet points last year after getting 36 as a sophomore ... came back with a fine 6th place PAC-8 finish after a disappointing year with injuries ... as a soph he won vs. SJS, UCLA and Stanford and placed 5th in the PAC-8 meet ... Golden West and California state prep champion in 1968 from Kennedy HS in Sacramento ... Psychology major ... born 9-17-50 in Port Arthur, Texas.

CALIFORNIA vs. ATHENS CLUB & SACRAMENTO STATE

(MARCH 4, EDWARDS STADIUM)
Cal-Athens Dual Meet Records

| | | | |
|-------------|-----------|---|------|
| 3000 SC | 9:09.1 | Bob Price (Athens) - - - - - | 1969 |
| 440 Relay | 40.7 | CAL (Smith, Curtis, Masters, Hart) - - - - - | 1971 |
| Mile | 4:09.6 | Steve Brown (Athens) - - - - - | 1969 |
| 120 HH | 14.2 | Bob McLennan (Cal) - - - - - | |
| 440 | 47.6 | Jim Ward (Athens) - - - - - | |
| 100 | 9.5 | Eddie Hart (Cal) - - - - - | |
| 880 | 1:50.9 | Ed Dean (Athens) - - - - - | |
| 440 IH | 52.7 | Bob McLennan (Cal) - - - - - | |
| 220 | 21.4 | Isaac Curtis (Cal) - - - - - | |
| 2 Mile | 8:52.6 | Bob Price (Athens) - - - - - | |
| Mile Relay | 3:12.1 | CAL (Diehl, Jackson, Wilhelm, Fraser) - - - - - | |
| Shot Put | 62'14" | Bruce Wilhelm (Athens) - - - - - | |
| Long Jump | 24'10" | Jim Fraser (Athens) - - - - - | |
| Javelin | 249'11" | John Burns (Athens) - - - - - | |
| Pole Vault | 15'6" | Mike Robinson (Cal) - - - - - | |
| Triple Jump | 50'6 1/2" | Jim Fraser (Cal) - - - - - | |
| High Jump | 6'10" | Clarence Johnson (Athens) - - - - - | |
| Discus | 182'8" | John Powell (Athens) - - - - - | |

SCORES: 1968 - Athens 79-66 1969 - Cal 82-71
1971 - Cal 97-55

Cal-Sacramento State Dual Meet Records

| | | | |
|-------------|------------|--|------|
| 3000 SC | 9:31.0 | Steve Carroll (Cal) - - - - - | |
| 440 Relay | 40.7 | CAL (Smith, Curtis, Masters, Hart) - - - - - | |
| Mile | 4:09.8 | Cliff West (Cal) - - - - - | |
| 120 HH | 14.2 | Bob McLennan (Cal) - - - - - | |
| 440 | 47.4 | Dave Archibald (Cal) - - - - - | |
| 100 | 9.5 | Eddie Hart (Cal) - - - - - | |
| 880 | 1:51.6 | Marty Ziebarth (Cal) - - - - - | |
| 440 IH | 52.7 | Bob McLennan (Cal) - - - - - | |
| 220 | 21.4 | Isaac Curtis (Cal) - - - - - | |
| 2 Mile | 9:01.4 | Cliff West (Cal) - - - - - | |
| Mile Relay | 3:12.1 | CALIFORNIA - - - - - | |
| Shot Put | 57'4" | Terry Lewis (Cal) - - - - - | |
| Discus | 177'4" | Jim Penrose (Cal) - - - - - | |
| Javelin | 240'8" | Bruce Kennedy (Cal) - - - - - | |
| High Jump | 6'8" | Dave Fishbaugh (Cal) - - - - - | |
| Long Jump | 23-11 1/2" | Dave Chan (SSC) - - - - - | |
| Triple Jump | 50'6 1/2" | Jim Fraser (Cal) - - - - - | |
| Pole Vault | 15-1 1/2" | Willie Wixom (SSC) - - - - - | 1964 |

SCORES: 1964 - Non-scoring 1969 - Cal 123-19 1970 - Cal 140-14
1971 - Cal 122-30

CALIFORNIA vs. SAN JOSE STATE

(MARCH 11, EDWARDS STADIUM)

Dual Meet Records

| | |
|---|------|
| Steve Carroll (Cal) - - - - - | 1971 |
| AL (Couser, Masters, Curtis, Hart) - - - | 1970 |
| Pete Santos - - - - - | 1968 |
| George Carty (SJS) - - - - - | 1970 |
| Abe Evans (SJS) - - - - - | 1967 |
| Mark Clayton (SJS) - - - - - | 1970 |
| Devone Smith (Cal) - - - - - | 1968 |
| Paddy McCrary (Cal) - - - - - | 1968 |
| Hammie Smith (SJS) - - - - - | 1965 |
| Tom Tuite (SJS) - - - - - | 1965 |
| Bob Waldon (Cal) - - - - - | 1970 |
| AL (Courchesne, Fishback, Archibald, Beaty) - - - - - | 1965 |
| Steve Maggard (Cal) - - - - - | 1962 |
| Bruce Kennedy (Cal) - - - - - | 1970 |
| Abbron Russ (Cal) - - - - - | 1959 |
| Chris Papanicolaou (SJS) - - - - - | 1967 |
| Gene Johnson (Cal) - - - - - | 1962 |
| Rich O'Sullivan (SJS) - - - - - | 1971 |
| Barry Dunn (Cal) - - - - - | 1971 |

1971 Score: Cal 93-61

CALIFORNIA vs. ARIZONA STATE

(APRIL 1, TEMPE)

Dual Meet Records

| | |
|--|------|
| CAL (Adams, Archibald, Brinkworth, Beaty) - - - - - | 1965 |
| Cliff West (Cal) - - - - - | 1971 |
| Fair Hooker (ASU) - - - - - | 1969 |
| Ulis Williams (ASU) - - - - - | 1965 |
| Eddie Hart (Cal) - - - - - | 1971 |
| John Drew (Cal) - - - - - | 1971 |
| Roddy Lee (Cal) - - - - - | 1971 |
| Bob Brinkworth (Cal) - - - - - | 1965 |
| Bob Bogleione (ASU) - - - - - | 1971 |
| CAL (Courchesne, Fishback, Beaty, Archibald) - - - - - | 1965 |
| Terry Lewis (Cal) - - - - - | 1971 |
| Jon Cole (ASU) - - - - - | 1965 |
| Mark Murro (ASU) - - - - - | 1969 |
| Clarence Johnson (Cal) - - - - - | 1969 |
| Dick Rambo (ASU) - - - - - | 1969 |
| Steve Rogaway (Cal) - - - - - | 1971 |
| Jim Fraser (Cal) - - - - - | 1971 |

1963 - Cal 88-57 1965 - ASU 80-64 1969 - Cal 74-66
1971 - Cal 105-43

CALIFORNIA vs. UCLA

(APRIL 8, LA COLISEUM)

Dual Meet Records

| | |
|-----------------------|---|
| 3000 SC 9:14.6 | Ruben Mejia (UCLA) |
| 440 Relay 39.9 | UCLA (Okoye, Domansky, Copeland, Busby) |
| Mile 3:58.4 | Bob Day (UCLA) |
| 120 HH 13.8 | Ron Copeland (UCLA) |
| 440 46.6 | Don Domansky (UCLA) |
| 100 9.4 | Reggie Robinson (UCLA) |
| 880 1:49.7 | Don Bowden (Cal) |
| 440 IH 50.4 | Wayne Collett (UCLA) |
| 220 20.5 | Reggie Robinson (UCLA) |
| 2 Mile 9:01.1 | George Husarek (UCLA) |
| 3 Mile 13:53.6 | Hartzell Alpizar (UCLA) |
| Mile Relay 3:10.7 | CAL (Glenn, Shafe, Steve Marcus (UCLA), Gary Pennington (Cal), Johnny Johnson (UCLA), Bruce Simpson (UCLA), Clarence Johnson (Cal), Jim Penrose (Cal), Jim Fraser (Cal) - - |
| Shot Put 63'3 1/4" | |
| Javelin 245'0" | |
| Long Jump 25'7 1/4" | |
| Pole Vault 16'9 3/4" | |
| High Jump 7'1 1/4" | |
| Discus 184'8" | |
| Triple Jump 53'1 1/4" | |

CAL WINS: 22 UCLA WINS: 18

First Meet: 1928 (Cal 109 1/3 - 21 2/3)

1970 Score: UCLA 78-76

PACIFIC-8 CHAMPIONSHIPS

(MAY 19-20, STANFORD)

CALIFORNIA'S INDIVIDUALS

| | |
|---------------------------|-----------------------------|
| 1919-H. W. Ealtz, 880 | 1948-D. Anderson, 880 |
| John Jackson, HJ | |
| Jack Merchant, LJ | |
| Javelin, Hammer | |
| 1920-Jack Merchant, LJ | 1949-Jack Merchant, LJ |
| O. O. Hendrixson, 440 | 1950-Jack Merchant, LJ |
| Pesky Sprott, 880 | 1953-Jack Merchant, LJ |
| Mile Relay | 1954-Jack Merchant, LJ |
| 1923-Harry Becker, HH | 1956-Charlie Hart, SP |
| Paul Boren, LJ | 1957-Jack Merchant, LJ |
| Jack Witter, SP | |
| Bill Neufeldt, Discus | 1958-Jack Merchant, LJ |
| S. S. Sorrenti, Javelin | |
| 1926-Elmer Bondshu, LJ | 1959-Willie Williams, HJ |
| 1936-Archie Williams, 440 | 1960-Jack Merchant, LJ |
| Del Fishback, LH | |
| Greg Stout, 440 IH | |
| 1937-Les Voorhees, 2 Mile | 1961-Alvin Campbell, 3 Mile |
| Guy Manuel, LJ | 1962-Gene Johnson, SP |
| 1938-Bob Law, HJ | 1963-Mark Murro, SP |
| 1939-Guy Manuel, LJ | 1964-Gene Johnson, SP |
| Herb Michael, SP | |
| Mel Long, JH | |
| 1941-Mile Relay | 1965-Forrest Beaty, HJ |
| Grover Klemmer, 440 | Bill Carter, HJ |
| Guinn Smith, PV | |
| Luther Nichols, PV | |
| Barney Wolf, Discus | 1967-Paddy McCrary, HJ |
| 1942-Mile Relay | 1968-Gary Pennington, SP |
| Hal Davis, 100-220 | 1970-Eddie Hart, HJ |
| Ralph Dewey, 2 Mile | 440 Relay |
| Luther Nichols, PV | 1971-Rice, HJ |
| Bob Biles, Javelin | |

CALIFORNIA vs. OREGON STATE & WASHINGTON

APRIL 15, EDWARDS STADIUM

Cal-OSU Dual Meet Records

| | | | |
|-------------|-----------|--------------------------------------|------|
| 3000 SC | 9:19.3 | Jim Barkley (OSU) | 1969 |
| 440 Relay | 39.5 | OSU (Smith, Parish, Mayes, Turner) | 1968 |
| 1 Mile | 4:05.4 | Keith Munson (OSU) | 1971 |
| 120 HH | 13.3 | Don Parish (OSU) | 1968 |
| 440 | 46.9 | Steve Pancoast (OSU) | 1967 |
| 100 | 9.4 | Willie Turner (OSU) | 1968 |
| 880 | 1:49.7 | John Lilly (OSU) | 1969 |
| 440 IH | 52.0 | Paddy McCrary (Cal) | 1967 |
| 220 | 20.5 | Willie Turner (OSU) | 1968 |
| 2 Mile | 8:52.6 | Keith Munson (OSU) | 1971 |
| Mile Relay | 3:12.5 | CAL (Diehl, Hengl, Weddie, D. Smith) | 1968 |
| Shot Put | 59'3 1/2" | Terry Lewis (Cal) | 1971 |
| Javelin | 185-2 | Tim Vollmer (OSU) | 1969 |
| Long Jump | 136-11 | Gary Pennington (Cal) | 1967 |
| Pole Vault | 7-1 1/4 | Clarence Johnson (Cal) | 1968 |
| High Jump | 6-6 | Dennis Phillips (OSU) | 1968 |
| Discus | 256-1/2 | Darrell Horn (OSU) | 1961 |
| Triple Jump | 50'4" | Robert Reader (OSU) | 1971 |

OSU WINS 8

1960 Cal, 76 1/2 - 54 1/2. 1971 Cal 85-60

Cal-Washington Dual Meet Records

| | | | |
|-------------|-------------|--|------|
| 3000 SC | 9:16.2 | Willie White (Cal) | 1958 |
| 440 Relay | 39.5 | Jerry Plowman (W) | 1964 |
| 1 Mile | 4:05.1 | Jim Smith (Cal) | 1969 |
| 120 HH | 13.3 | Archie Williams (Cal) | 1936 |
| 440 | 46.9 | Dave Dupree (W) | 1968 |
| 100 | 9.4 | Don Bowden (Cal) | 1958 |
| 880 | 1:49.7 | Bill Smart (W) | 1968 |
| 440 IH | 52.0 | Bob House (Cal) | 1957 |
| 220 | 20.5 | Bob Waldon (Cal) | 1969 |
| 2 Mile | 8:52.6 | Bob Crow (Cal) | 1969 |
| Mile Relay | 3:10.2 | Lou Kirtman (Cal) | 1968 |
| Shot Put | 63'3 1/2" | Paddy McCrary (Cal) | 1968 |
| Javelin | 256'10 1/2" | CAL (Blakeney, Adams, Brinkworth, Beaty) | 1964 |
| Long Jump | 24'8 1/2" | CAL (Jackson, McCrary, Hengl, D. Smith) | 1968 |
| Pole Vault | 16'7" | John Hubbell (W) | 1969 |
| High Jump | 7.0 | Charlie Butt (Cal) | 1956 |
| Discus | 193'9" | Gary Pennington (Cal) | 1969 |
| Triple Jump | 50'2 1/2" | Jim Fraser (Cal) | 1969 |
| | | Brian Sternberg (W) | 1963 |
| | | Mike Robinson (Cal) | 1968 |
| | | Gene Johnson (Cal) | 1964 |
| | | Clarence Johnson (Cal) | 1968 |
| | | Bruce Ballmer (Cal) | 1964 |

CAL WINS 21, WASHINGTON WINS 3.

First Meet, 1901 (Cal 81 2/3 - 35 1/3)

Last Meet, 1969, Cal 99-54 (Cal has won the last 19 meets, last losing in 1932)

CALIFORNIA vs. SOUTHERN CAL

(APRIL 22, STANFORD STADIUM)

Dual Meet Records

| | | | |
|---------------|-------------------------------|------------------------------------|------|
| 3000 SC | 9:16.2 | Curtis Jones (SC) | 1969 |
| 440 Relay | 39.5 | SC | 1969 |
| 1 Mile | 4:05.1 | John Link (SC) | 1969 |
| 120 HH | 13.3 | Earl McCullouch (SC) | 1969 |
| 440 | 46.9 | Edesel Garrison (SC) | 1969 |
| 100 | 9.4 | Lennox Miller (SC) | 1969 |
| 880 | 1:49.7 | Eddie Hart (Cal) | 1969 |
| 440 IH | 52.0 | Don Bowden (Cal) | 1969 |
| 220 | 20.5 | Geoff Vanderstock (SC) | 1969 |
| 2 Mile | 8:45.4 | Willie Deckard (SC) | 1969 |
| Mile Relay | 3:10.2 | Ole Oleson (SC) | 1969 |
| Shot Put | 63'3 1/2" | SC (Brown, Burks, Hinds, Garrison) | 1969 |
| Javelin | 256'10 1/2" | Dave Murphy (SC) | 1969 |
| Long Jump | 24'8 1/2" | Bob Sbordone (SC) | 1969 |
| Pole Vault | 16'7" | Guy Manuel (Cal) | 1969 |
| High Jump | 7.0 | Bob Seagren (SC) | 1969 |
| Discus | 193'9" | Clarence Johnson (Cal) | 1969 |
| Triple Jump | 50'2 1/2" | Joe Antonovich (SC) | 1969 |
| CAL WINS: | 19, SC WINS: | 48 | |
| First Meet: | 1907 (California 89-33) | | |
| 1971 Score: | SC 101-43 | | |
| Last Cal Win: | 1943 (SC has won 27 straight) | | |

CALIFORNIA vs. STANFORD

(MAY 6, EDWARDS STADIUM)

Dual Meet Records

| | | | |
|-------------|--------------------|-------------------------------------|------|
| 3000 SC | 9:12.4 | Brook Thomas (Stanford) | 1969 |
| 440 Relay | 40.0 | CAL (Couser, Curtis, Massey, Hinds) | 1969 |
| 1 Mile | 4:03.3 | Don Kardong (Stanford) | 1969 |
| 120 HH | 14.2 | Jerry Wood (Stanford) | 1969 |
| 440 | 46.9 | Lou Kirtman (Cal) | 1969 |
| 100 | 9.5 | Rick Tipton (Stanford) | 1969 |
| 880 | 1:48.5 | Dave Archibald (Cal) | 1969 |
| 440 IH | 51.0 | Don Anderson (Cal) | 1969 |
| 220 | 21.2 | Willie White (Cal) | 1969 |
| 2 Mile | 8:52.7 | Larry Questad (Stanford) | 1969 |
| Mile Relay | 3:09.8 | Ernie Cunliffe (Stanford) | 1969 |
| Shot Put | 59'3 1/2" | Randy White (Stanford) | 1969 |
| Javelin | 265'8" | Larry Questad (Stanford) | 1969 |
| Long Jump | 25'2 1/2" | Dave Masters (Cal) | 1969 |
| Pole Vault | 16'3" | Harry McCalla (Stanford) | 1969 |
| High Jump | 7'0" | CAL (Glenn, Smith, Hengl, Terry) | 1969 |
| Discus | 193'2" | Tom Colby (Stanford) | 1969 |
| Triple Jump | 50'8 3/4" | Gay Bryan (Stanford) | 1969 |
| CAL WINS: | 35, STANFORD WINS: | 40 | |
| First Meet: | 1893 (Cal 91-35) | | |
| 1971 Score: | Stanford 76-69 | | |

JUNE 10, EDWARDS STADIUM)

[illegible]

WOMEN

| | | | | | | | | | | |
|--------|--------|---------------------------------|---|---|---|---|---|---|---|------|
| 100 | 10.3 | Chi Cheng (Nat'l. China) | - | - | - | - | - | - | - | 1969 |
| 440 | 51 | Kathy Hammond (Sacramento) | - | - | - | - | - | - | - | 1971 |
| 880 | 2:0 | Joris Brown (Falcon TC) | - | - | - | - | - | - | - | 1969 |
| Mile | 4:45 | Francie Larrieu (SJ Cindergals) | - | - | - | - | - | - | - | 1971 |
| 100m h | 1:39.0 | Chi Cheng (LATIC) | - | - | - | - | - | - | - | 1970 |

JUNIOR COLLEGE

Merritt (Edmonson, Williams,
Stuckey, Ford) - - - - - 1970
Merritt (Gibson, Williams, Bennett, Ford) 1971
Merritt (Jefferson, Gordon, Baker,
Williams) - - - - - 1971

HIGH SCHOOL

| | | | | |
|-----|-------|----|---|-------|
| 44C | Relay | 41 | El Cerrito (Jack, Smith, Lewis, Burns) | -1970 |
| 25 | Relay | 3 | Castlemont (Roberts, Morgan, Marshall Burks) | -1970 |
| 21 | Relay | 40 | El Cerrito (Stodden, Woolfe, Rice, Wood) | -1969 |

ALL-TIME BEST PER CENTERS

(RETURNEES IN CARS)

| | | | | | |
|-----------|---------------------------|-----------|-----|--------------------------|------|
| 100 | | | | | |
| 1. | 9.3—King | 1956 | 9. | 4 0.2—Hattie | 1963 |
| | 9.3—Hart | 1970 & 71 | 10. | 4 1 1 —Anna | 1971 |
| | 9.3—CURTIS | 1970 | | WO | |
| 4. | 9.4—Davis | 1942 | | | |
| | 9.4—G. Anderson | 1935 | 1. | 8 1.6—Walton | 1968 |
| 6. | 9.5—D. Anderson | 1950 | 2. | 8 1.1—Fries | 1966 |
| | 9.5—Blackburn | 1953 | 3. | 8 1.8—House | 1957 |
| | 9.5—White | 1958 | 4. | 8 1.0—Curtis | 1971 |
| | 9.5—Brinkworth | 1964 | 5. | 7 1.7—Wesley | 1971 |
| | 9.5—Masters | 1969 | 6. | 6 1.3—Cor | 1971 |
| 200(turn) | | | 7. | 9 1.—Gayle | 1961 |
| 1. | 20.5—Hart | 1970 | 8. | 9 1.—Elliot | 1967 |
| 2. | 20.6—Masters | 1970 | 9. | 9 1.—A. | 1971 |
| 3. | 20.8—CURTIS | 1970 | 10. | 9 1.—W. | 1971 |
| 4. | 21.0—Beaty | 1965 | | T.H.E.M.I.S. | |
| 5. | 21.2—King | 1957 | 1. | 13 19.0—Walton | 1969 |
| | 21.2—White | 1958 | 2. | 14 19.8—Fries | 1966 |
| | 21.2—Brinkworth | 1965 | | 14:09—Crow | 1970 |
| | 21.2—Archibald | 1965 | 4. | 14 19.0—G. | 1961 |
| | 21.2—Couser | 1970 | 5. | 14 19.2—Y. | 1971 |
| 10. | 21.3—Ansley | 1971 | 6. | 14 19.8—J. | 1971 |

440

| | | | | | |
|-----|-----------------------------|------|------|----------------------------|------|
| 1. | 46.0m-Klemmer | 1941 | 1. | 8'-3" Price | 1967 |
| | 46.0m-Yerman | 1960 | 2. | 9'15" Carroll | 1970 |
| | 46.3y-Archibald . 1962 & 64 | | 3. | 9'25" Lind | 1964 |
| | 46.3y-Beaty | 1965 | 4. | 9'34" S. Byars | 1969 |
| 5. | 46.1m-Williams | 1936 | 5. | 9'40" Rose | 1967 |
| 6. | 46.7y-Hengl | 1968 | | | |
| 7. | 47.0y-Watts | 1939 | | | |
| | 47.0y-Fishback | 1965 | | | |
| | 47.0y-Weddle | 1968 | | | |
| 10. | 47.3y-Smith | 1969 | 1. | 14'-0" Kirtland | 1968 |
| | 47.3y-BROWN | 1971 | 2. | 14'-0" McFarlane | 1970 |
| | | | 14.- | | 1971 |

880

| | | | | | |
|-----|--------------------------|------|-----|-------------------------|------|
| 1. | 1:47.2—Bowden. | 1957 | 6. | 14.3—F. & | 1949 |
| 2. | 1:46.8m—Siebert. | 1960 | 7. | 14.4—Zig | 1954 |
| 3. | 1:48.6y—DREW. | 1971 | | 14.4—Cray | 1977 |
| 4. | 1:48.9y—BROWN. | 1971 | | 14.4—OSIUS | 1977 |
| 5. | 1:49.2—Fishback. | 1965 | 10. | 14.5—Kremaker | 1977 |
| 6. | 1:49.4—Smith. | 1965 | | 14.5—3- | |
| 7. | 1:50.3—Shafer. | 1966 | | 14.5— | |
| 8. | 1:50.4—Orme. | 1958 | | 14.5— | |
| 9. | 1:50.5—Yerman. | 1960 | | 14.5— | |
| 10. | 1:50.7—Tallon. | 1968 | | 14.5— | |

MILE

| | | | | | |
|----|---------------------------|------|----|-------------------------|------|
| 1. | 3:58.7—Bowden | 1957 | 3. | 51.7—Mellen | 1970 |
| 2. | 4:03.7—DREW | 1971 | 4. | 51.8—Lee | 1970 |
| 3. | 4:04.0—Price | 1966 | 5. | 53.3—Fishback | 1936 |
| 4. | 4:04.4—WEST | 1969 | 6. | 53.3m—McC | 1936 |
| 5. | 4:09.5—R. Byers | 1967 | 7. | 53.5m—McC | 1971 |
| 6. | 4:10.0—Orme | 1958 | 8. | 54.4—Gould | 1964 |
| 7. | 4:10.1—Barley | 1968 | 9. | 54.7—Karlson | 1959 |
| | 4:10.1—Tallon | 1969 | | 54.7—Holt | 1964 |

LONG JUMP

| | |
|--|--|
| 1. 25'3" - Nutting 1937 | 1. 25'3" - Nutting 1937 |
| 2. 25'2 3/4" - Royster 1968 | 2. 25'2 3/4" - Royster 1968 |
| 3. 25'2" - Fraser 1971 | 3. 25'2" - Fraser 1971 |
| 4. 25'1 1/8" - Manuel 1938 | 4. 25'1 1/8" - Manuel 1938 |
| 5. 25'1" - Russ 1959 | 5. 25'1" - Russ 1959 |
| 6. 24'11 3/4" - Clark 1934 | 6. 24'11 3/4" - Clark 1934 |
| 7. 24'11 1/2" - Rogaway 1971 | 7. 24'11 1/2" - Rogaway 1971 |
| 8. 24'9 3/4" - Upshaw 1955 | 8. 24'9 3/4" - Upshaw 1955 |
| 9. 24'9" - Jurkovich 1941 | 9. 24'9" - Jurkovich 1941 |
| 10. 24'6" - Kennedy 1967 | 10. 24'6" - Kennedy 1967 |

TRIPLE JUMP

| | |
|--|--|
| 1. 53'1 1/4" - Fraser 1971 | 1. 53'1 1/4" - Fraser 1971 |
| 2. 50'11 1/4" - Dunn 1970 | 2. 50'11 1/4" - Dunn 1970 |
| 3. 49'11 3/4" - Gaskill 1963 | 3. 49'11 3/4" - Gaskill 1963 |
| 4. 49'4 1/2" - Kiefer 1968 | 4. 49'4 1/2" - Kiefer 1968 |
| 5. 48'11" - Meredith 1968 | 5. 48'11" - Meredith 1968 |
| 6. 48'6 3/4" - Ballmer 1964 | 6. 48'6 3/4" - Ballmer 1964 |
| 7. 47'10 1/2" - Royster 1967 | 7. 47'10 1/2" - Royster 1967 |
| 8. 47'8 3/4" - McCrary 1966 | 8. 47'8 3/4" - McCrary 1966 |
| 9. 47'6 1/4" - Kennedy 1966 | 9. 47'6 1/4" - Kennedy 1966 |
| 10. 46'2 1/4" - Rusev 1963 | 10. 46'2 1/4" - Rusev 1963 |

HIGH JUMP

| | |
|---|---|
| 1. 7'3 3/4" - C. Johnson 1967 | 1. 7'3 3/4" - C. Johnson 1967 |
| 2. 7'0 1/2" - G. Johnson 1962 | 2. 7'0 1/2" - G. Johnson 1962 |
| 3. 6'11" - Olsen 1963 | 3. 6'11" - Olsen 1963 |
| 4. 6'10 3/4" - Carter 1965 | 4. 6'10 3/4" - Carter 1965 |
| 5. 6'9" - Nutt 1967 | 5. 6'9" - Nutt 1967 |
| 6. 6'8" - French 1965 | 6. 6'8" - French 1965 |
| 6'8" - Ackley 1970 | 6'8" - Ackley 1970 |
| 6'8" - FISHBAUGH 1971 | 6'8" - FISHBAUGH 1971 |
| 9. 6'7 1/2" - Dailey 1956 | 9. 6'7 1/2" - Dailey 1956 |
| 10. 6'7 1/2" - Hanger 1948 | 10. 6'7 1/2" - Hanger 1948 |

440 RELAY

| | |
|--------------------------|--------------------------|
| 1. 39.8- 1969 | 1. 39.8- 1969 |
| 2. 39.8- 1970 | 2. 39.8- 1970 |
| 3. 40.3- 1965 | 3. 40.3- 1965 |
| 40.3- 1968 | 40.3- 1968 |
| 40.3- 1965 | 40.3- 1965 |
| 40.3- 1971 | 40.3- 1971 |
| 7. 40.4- 1970 | 7. 40.4- 1970 |
| 40.4- 1965 | 40.4- 1965 |
| 40.4- 1969 | 40.4- 1969 |
| 10. 40.6- 1969 | 10. 40.6- 1969 |
| 40.6- 1971 | 40.6- 1971 |

MILE RELAY

| | | |
|--|---------|------|
| 1. 3:07 - Fishback, Beatty, Archibald | NCAA | 1964 |
| 2. 3:07 - Fishback, Beatty, Archibald | NCAA | 1965 |
| 3. 3:07 - Hengl, D. Smith, Weddle | PA AAU | 1968 |
| 4. 3:07 - Schafer, Hengl, Beatty | NCAA | 1966 |
| 5. 3:07 - Diehl, D. Smith, Hengl | NCAA | 1967 |
| 6. 3:07 - Bostein, Karlsrud, Siebert, Yerman | Compton | 1960 |
| 7. 3:07 - e, Froom, Barnes, Klemmer | PCC-B10 | 1941 |
| 8. 3:07 - rud, Gould, Siebert, Yerman | Modesto | 1959 |
| 9. 3:07 - hesne, Fishback, Brown, Archibald | Modesto | 1962 |
| 10. 3:07 - DREW, Ansley, BONNER, BROWN | SC Dual | 1971 |

CALIFORNIA'S WORLD RECORD HOLDERS

| | |
|--|---------|
| *Hal Davis 100y (9.2) | 1942-48 |
| Hal Davis 100m (10.2) | 1942-48 |
| *Leamon King 100y (9.3) | 1942-48 |
| *Leamon King 100m (10.1) | 1942-48 |
| *Grover Klemmer 440 (46.4) | 1942-48 |
| *Archie Williams 400m (46.1) | 1942-48 |
| *Grover Klemmer 400m (46.0) | 1942-48 |
| Lon Spurrier 880y (1:47.5) | 1942-48 |
| *Tom Moore 120 HH (14.2) | 1942-48 |
| Eddie Beeson HJ (6'7 1/4") | 1942-48 |
| Jack Yerman 2-Mile Relay | 1942-48 |
| Jerry Siebert 2-Mile Relay | 1942-48 |
| Jack Yerman Mile Relay | 1942-48 |
| Jack Yerman 1600 Relay | 1942-48 |
| Lon Spurrier Mile Relay | 1942-48 |
| Bob Kiesel 400m Relay | 1942-48 |
| Leamon King 400m Relay | 1942-48 |
| *Cal Mile Relay (3:09.4) | 1942-48 |

(John Reese, Fay Froom, Clarence Barnes, Grover Kiesel)

*Cal 2-Mile Relay (7:34.5)

(John Reese, Grover Klemmer, Dick Peter, Clarence Barnes)

*Cal 2-Mile Relay (7:20.9)

(Maynard Orme, Jerry Siebert, Jack Yerman, Don Bowd)

*Cal Sprint Medley (3:19.8)

(Jack Yerman, Maynard Orme, Willie White, Don Bowd)

*Cal Sprint Medley (3:18.8)

(Jack Yerman, Monte Upshaw, Willie White, Don Bowd)

*Collegiate records as well as world records.

OLYMPIC CHAMPI

| | |
|--------------------------------|-------------|
| 1928 - COACH | 1952 - C |
| WALTER CHRISTIE | |
| 1932 - BOB KIESEL, | 1956 - LE |
| 400 Meter Relay | 4C |
| 1936 - ARCHIE WILLIAMS | 1960 - JACK |
| 400 Meter Dash | 16C |
| 1948 - GUINN SMITH, Pole Vault | |

OLYMPIANS

| | |
|--------------------------------------|---------------------------------|
| 1912 - Fred Allen, 6th Long Jump | 1948 - Marty Biles, 8th Javelin |
| 1920 - Pesky Sprott, 6th 800m | Kaare Veith, 1st 100y |
| Brick Muller, 2nd High Jump | Jack Williams, 1st 100y |
| Harry Liversedge, 3rd Shot Put | |
| John Merchant, 12th Long Jump | 1952 - Price |
| 1924 - Bill Neufeldt, 5th Javelin | 1956 - Lon Spurrier, 1st 100y |
| Harry Liversedge, Shot Put Alternate | Don Bowd, 1st 100y |
| Paul Boren, Long Jump Alternate | Dr. Brick M |
| John Merchant, Hammer Throw | 1960 - Jerry Siebert |
| 1932 - Ken Churchill, 6th Javelin | 1964 - Jerry Siebert |
| 1952 - Head Coach: Brutus Hamilton | 1968 - Dave Maggari |
| 1936 - Bob Clark, 2nd Decathlon | |
| Bob Clark, 6th Long Jump | |

CHAMPIONS

1942 - HAL DAVIS, 100
 HAL DAVIS, 220
 BOB BILES, Javelin

ON, High Jump

1943 - HAL DAVIS, 100
 HAL DAVIS, 220

Javelin

1952 - GEORGE ROSEME,
 Javelin
 1954 - LARRY ANDERSON,
 Pole Vault
 1957 - DON BOWDEN, 880

elin

1962 - ROGER OLSEN,
 High Jump

DAVE FISHBACK, FORREST BEATY.

-----Mile Relay

DAVE FISHBACK, FORREST BEATY.

-----Mile Relay

ISAAC CURTIS, DAVE MASTERS,

-----440 Relay

NAL ALL-AMERICANS

1956 - Bob House, 10,000m
 1957 - Leamon King, 100 & 220
 Bob House, 2-mile
 1958 - Jack Yerman, 440
 1960 - Jerry Siebert, 880
 1962 - Gene Johnson, HJ
 1963 - Roger Olsen, HJ
 Todd Gaskill, TJ
 1964 - Gene Johnson, HJ
 Don Schmidt, Discus
 1965 - Forrest Beaty, 440
 Dave Archibald, 440
 1966 - Chuck Glenn, Larry Hengl,
 Mike Shafer, Forrest Beaty,
 mile relay
 1967 - Chuck Glenn, John Diehl,
 Larry Hengl, Devone Smith,
 mile relay
 1968 - Jim Smith, Larry Hengl,
 Devone Smith, Pat Weddle,
 mile relay
 1970 - Isaac Curtis, 100 & 220
 Rich Dunn, TJ
 1971 - Eddie Hart, 100 & 200
 Rick Brown, 880

EDWARDS STADIUM

Finished in 1932, and at the time the Stadium in the World, Edwards Stadium was the site of seven National Collegiate Championship AAU Championship Meet, All-American and the 1932 IC4A Meet, the only time this meet had been held away from the East.

This Stadium is named after Col. G. Edwards, who donated the field adjoining it to the East.

In 1957 the oval itself was dedicated to Walter Christie, California's first track coach in the early sixties "the friends of California track" built the Walter Christie bench which sits on the running track on the West side of the infield.

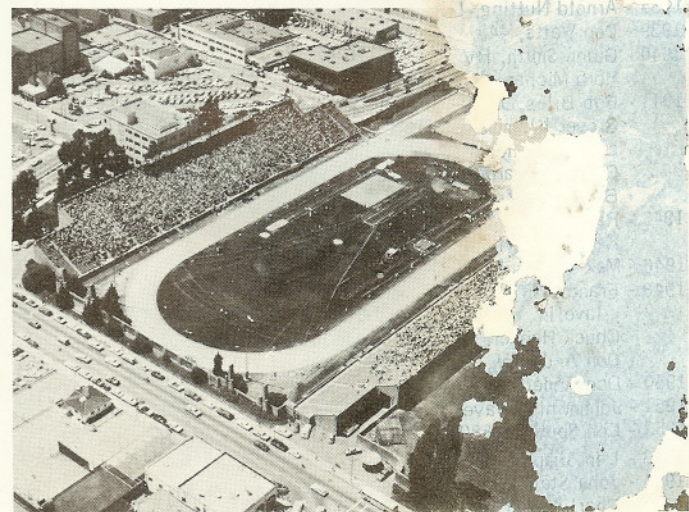
With funds that remained after the purchase of the electric clock that stands atop the scoreboard, purchased.

The track in the 22,000 seat Stadium was completed in 1965 and is a composite of Fresno clay and reddish in color.

Ten world records, 16 American records and 25 collegiate records have been set in this Stadium.

THE WORLD RECORDS SET IN EDWARDS

220t (20.6) Ray Norton (SCYV) 1959 880 (1:10.0) Ray Norton (SCYV) 1959
 440 (46.4) Grover Klemmer (Cal) 1941 Mile (3:55.0) Grover Klemmer (Cal) 1941
 440 (46.3) Herb McKenley (Jamaica) 1947 PV (15'0") Herb McKenley (Jamaica) 1948
 440 (46.0) Herb McKenley (Jamaica) 1948 PV (15'0") Herb McKenley (Jamaica) 1948
 440 (45.7) Glenn Davis (Ohio St.) 1958 HJ (7'6 1/2") Glenn Davis (Ohio St.) 1958





ALL AMERICAN GARY HERNANDEZ

First Base

All District 8 and third team All American ...broke five Cal school records, set a Pac-8 ... tied two others in the greatest single battin ... a Cal player ... school records were for hits ... triples (8), total bases (104) and slugging per459 league average was highest in Pac-8 histor ... and 4 triples tied league marks ... coach George ... "Wherever we go, people remark on his swing. ... right on top of the ball, and he hits it where i ... can be a great pro if he learns to do what Eps ... work hard on his fielding weaknesses" ... Gary ... to prove he can play first base, "I used to ... fielding. But last year with the hitting going ... I wasn't concentrating in the field." ... Gary ha ... streaks of 9 and 10 and three game-winning hi331 at Menlo College before entering Cal ... l ... at Capuchino High School for coaches Al Figone ... Clerque ... he hit five homeruns in Italy over th ... and played for the Peninsula League champion ... this winter ... bats and throws left ... compare his ye ... of Cal's other great sluggers:

| | 2B | 3B | HR | R | RBI | TE | Ave. |
|-----------------|----|----|----|----|-----|----|------|
| Hernandez ('71) | 13 | 8 | 4 | 29 | 26 | | .387 |
| Epstein ('64) | 12 | 2 | 5 | 27 | 31 | | .334 |
| Jensen ('49) | 8 | 2 | 8 | 31 | 33 | 8 | .326 |
| Scarpelli ('61) | 8 | 7 | 1 | 38 | 22 | 2 | .317 |

(Cover Photo of Hernandez by Nick Peter)

SPRING SPORTS STAFF

| Athletic Director & Track Coach | Residence | |
|---------------------------------------|-----------|---------|
| DAVE MAGGARD | 284-4230 | |
| Business Manager | | |
| PAT FARRAN | 278-0417 | |
| Team Physician | | |
| JEROME PATMONT | 845-5666 | |
| Head Trainer | | |
| BOB ORR | 273-9614 | |
| Sports Information Director | | |
| BOB STEINER | 534 51 | |
| Assistant Sports Information Director | | |
| DAVE KAYFES | 237-(...) | |
| Baseball Coach | | |
| GEORGE WOLFMAN | 845 57 | .38... |
| Assistant Baseball Coach | | |
| DEL YOUNGBLOOD | 28 | .38... |
| Crew Coach | | |
| MARTY MC NAIR | 254 2 | .370... |
| Assistant Crew Coach | | |
| KENT FLEMING | 527-1112 | .701 |
| Golf Coach | | |
| JOHN LUNDAHL | | .550 |
| Rugby Coach | | |
| DR. MILES HUDSON | 254 14 | .975 |
| Tennis Coach | | |
| KEVIN MERRICK | 837 527 | .248 |

THE STAFF

HEAD COACH GEORGE WOLFMAN

The head coach at Cal since 1955, George Wolfman ranks 13th on the list of active collegiate coaches in games won. His teams have won 430 games against 282 losses, one NCAA title (1957) and three championships in the old CIBA. He was collegiate coach of the year in '57, but his teams have finished no higher than fourth since the formation of the Pac-8. Two years ago, the Bears missed the play-offs by four-tenths of a percentage point, and that's the closest he's been. He has had 13 winning seasons in 17 years, and his won-loss percentage is .598.

His coaching assignment was in 1936, when he was on High in San Francisco. Outside of a year in the Navy, he remained there until 1953, and in 1954, Wolfman was on hand to coach his last year at California. And in 1955, he became the head coach.

Wolfman captained the 1933 Cal squad that won the national title. He signed a professional contract after the war and played two seasons for the Mission Reds of the Pacific Coast League as a catcher.

He lives in Berkeley with his wife, Jean, and has three sons—Ronald, Tommy, and Richard.

ASSISTANT COACH ROCKY SHONE

After catching on last year's team, Rocky broke his arm this season and stayed on to help the team as an assistant coach. A team leader as a player, he has a keen understanding of the game and holds the respect of the current players. In Social Science, he will soon enter graduate school.

ASSISTANT COACH DEL YOUNGBLOOD

A man of several hats in the Cal Athletic Department, Del Youngblood is in his third season as coach Wolfman's assistant. The past two seasons he has helped with the varsity, and this year he takes over the frosh-soph team. Along with his baseball duties, he serves as the assistant to the Athletic Director.

Youngblood has made big contributions to the athletic department and baseball program in the past. He has been an active recruiter for the Bears and has helped recruit baseball players in summer and winter camps. In the summers he has taken several team trips to the South Dakota Basin League. He is also a coach of the top collegiate circuit.

Formerly a top infielder at Fresno State, coached by Wolfman and St. Mary's before coming to Cal. He is now in Lafayette with his wife, Shirley, and three sons—Mike, Chad, and...

CALIFORNIA BASEBALL

1972 SCHEDULE

| DAY | DATE | OPPONENT | SITE |
|--------|---------|-------------------------|----------|
| Sat. | Feb. 12 | Alumni | Evans |
| Mon. | Feb. 14 | Phillie Rookies | Evans |
| Tues. | Feb. 15 | UOP | Stockton |
| Thurs. | Feb. 17 | St. Mary's | Evans |
| Fri. | Feb. 18 | Fresno State | Fresno |
| Sat. | Feb. 19 | Fresno State | Fresno |
| Tues. | Feb. 22 | USF | Evans |
| Wed. | Feb. 23 | Sonoma State | Evans |
| Thurs. | Feb. 24 | Cal State Hayward | Evans |
| Sat. | Feb. 26 | Chico State (2) | Evans |
| Wed. | Mar. 1 | San Jose State | Evans |
| Thurs. | Mar. 2 | St. Mary's | Moraga |
| Sat. | Mar. 4 | San Francisco State (2) | S.F. |
| Tues. | Mar. 7 | UC Davis | Evans |
| Wed. | Mar. 8 | USF | S.F. |
| Fri. | Mar. 10 | Stanislaus State | Evans |
| Sat. | Mar. 11 | Humboldt State (2) | Evans |
| Tues. | Mar. 14 | Santa Clara | Evans |
| Fri. | Mar. 17 | Fresno State | Evans |
| Sat. | Mar. 18 | Cornell (2) | Evans |
| Sat. | Mar. 25 | Stanislaus State (2) | Evans |
| Tues. | Mar. 28 | Santa Clara | Evans |
| Wed. | Mar. 29 | Azusa-Pacific | Evans |
| Fri. | Mar. 31 | Portland Tournament | Evans |
| Sun. | Apr. 2 | | |
| Tues. | Apr. 4 | Sacramento State | Evans |
| Fri. | Apr. 7 | UCLA | Evans |
| Sat. | Apr. 8 | UCLA (2) | Evans |
| Tues. | Apr. 11 | San Jose State | Evans |
| Fri. | Apr. 14 | USC | Evans |
| Sat. | Apr. 15 | USC (2) | Evans |
| Tues. | Apr. 18 | Cal State Hayward | Hayward |
| Fri. | Apr. 21 | Stanford | Evans |
| Sat. | Apr. 22 | Stanford (2) | Evans |
| Tues. | Apr. 25 | Santa Clara | Evans |
| Fri. | Apr. 28 | USC | Evans |
| Sat. | Apr. 29 | USC (2) | Evans |
| Tues. | May 2 | Santa Clara | Evans |
| Fri. | May 5 | UCLA | Evans |
| Sat. | May 6 | UCLA (2) | Evans |
| Mon. | May 8 | UC Irvine | Evans |
| Fri. | May 12 | Stanford | Evans |
| Sat. | May 13 | Stanford (2) | Evans |

FROSH-SOPHOMORE SCHEDULE

| | |
|---------------------------------------|-----------------------------------|
| Feb. 10 At Laney JC, 2:30 p.m. | Apr. 6 At USF, 2:30 p.m. |
| Feb. 15 Delta JC, 3 p.m. | Apr. 7 At Santa Clara, 2:30 p.m. |
| Feb. 18 Sacramento CC, 2:30 p.m. | Apr. 8 San Jose State, 2:30 p.m. |
| Feb. 19 Contra Costa JC, 1 p.m. | Apr. 12 Santa Clara, 2:30 p.m. |
| Feb. 21 College of Sequoias (2) 11 am | Apr. 14 At Santa Clara, 2:30 p.m. |
| Feb. 24-26 At Stfd. Frosh-Soph Trny. | Apr. 15 At Santa Clara, 2:30 p.m. |
| Feb. 29 Gavilan JC, 2:30 p.m. | Apr. 18 USF, 2:30 p.m. |
| Mar. 2 At Contra Costa JC, 3 p.m. | Apr. 21 At Santa Clara, 2:30 p.m. |
| Mar. 3 Chabot JC, 2:30 p.m. | Apr. 22 At Santa Clara, 2:30 p.m. |
| Mar. 4 College of Redwoods (2) Noon | Apr. 26 At Santa Clara, 2:30 p.m. |
| Mar. 7 At Santa Clara, 2:30 p.m. | Apr. 28 At Santa Clara, 2:30 p.m. |
| Mar. 8 USF, 2:30 p.m. | May 1 At Santa Clara, 2:30 p.m. |
| Mar. 10 Reedley JC, 3 p.m. | May 12 At Santa Clara, 2:30 p.m. |
| Mar. 11 At Fresno State JVs (2) Noon | May 13 At Santa Clara, 2:30 p.m. |
| Mar. 14 At Delta JC, 3 p.m. | |
| Mar. 15 Menlo JC, 2:30 p.m. | |
| Mar. 16 Butte JC, 3 p.m. | |

1972 OUTLOOK

Division of the Pac-8, north and south, places the Bears in the toughest four-team league in the nation. In order to get into the May 1970 play-offs, the Bears must finish ahead of defending NCAA champion (1969-70) and 1971 league runners-up UCLA and Stanford. There won't be two spots for the southern and northern divisions in the three-game finale for the two sub-league titlists. And with so many other teams looking very much like last year, the road ahead is uphill.

George Wolfman has his top two pitchers back -- which is one of the league rivals can say -- but their combined record was 3-9 last season. He says the pitching will have to show improvement will have to start with the two lettermen. Wolfman has the potential to be as good -- the Bears hit .281, third in the Pac-8 -- and there's excellent glovemen at several of the positions on the field. Here's how it looks by position:

PITCHING: RAY DEL CARLO and DOAK MOORE were the top of last year. Del Carlo is the gritty competitor, while Moore pitches to be one of the league's best. If they are at Cal has a good left-right combination.

STEVE LACKI should be in the top three. A big, hard-ender, he has a reputation for being a durable starter. **ER, PAUL DYER, KEN NELSON** and **TERRY WATERS** throw hard, and any one or two could become a starter. **WATERS** and **WATERS** are relying on healed knees.

count on control pitching from **NEIL ERNST**. He was successful last year and could be a starter. JC transfer **JOE LEE** and last season's top frosh-soph pitcher **RICHARD** have a chance to fit into the rotation.

Free starters from a year ago return to their positions. **JOE**, the 1971 Pac-8 batting champion and All American, is staying at first base, while **GENE TATE** and **MIKE VINCENT** hold on to the starting second and third base spots. The power-hitting football player **MIKE VINCENT** backs up the tough-tough soph captain **BOBBY TULK** is a slick fielder at shortstop. He has to hit well too to move out Tate. Koski will be the challenger at third. **DON THOMAS** is a powerful power player who batted over .400 this summer. **GREG WESTMORELAND** comes from Citrus JC where he led his league in batting. The first and third base candidates are fine hitters, a couple may be good enough to play in the outfield.

open, and the top early-season candidates are two young hitters, **RON COFFMAN** and **RANDY HOOPER**. Coffman, a freshman, hit 18 home runs last year, playing ahead of Hooper, but he's expected to play some points with his play in Italy over the summer. The other guy who gets on base more often early

ROY MEISNER is an outstanding center fielder. Position for the other two positions, left open by the league Steve Ohland and Jerry Vitatoe. **DAVE** batted occasionally in right, but he'll have to hit better there regularly. **JOHN HARO** is a power hitter who's hot streaks became longer. **HANK SAUER Jr.**, the former New York Giant homerun king, has a good shot at a power hitter with speed and a fine arm. **PETE**, short player last year; frosh-soph player **MIKE CALDER**; Mateo transfer **SKIP CONLEY**; Naval Academy transfer, and former El Cerrito prep star **CARL BROWN** will

The competition is heavy here. **WILNER ASH** finished last season as the varsity starter, and he played well. The new addition, **ERIC LINDQUIST**, is also back, and he has worked hard on improving his fielding. If he has, he will be right back in the lineup. If not, he may be moved to the outfield. The third man **BRAD BRIDGES** will cash both lettermen. A leader of the frosh-soph pennant team last season, he is a competitor who can hit and field.

PITCHERS

RAY DEL CARLO

The top hurler on last year's staff . . . ranked seventh in Pac-8 ERA, (2.79) but he won only one of seven league decisions. Four one-run losses marred his won-loss record . . . coaches call him "a fine competitor and a guy who can be counted on in a big game" . . . a lanky left-hander with a fine fastball and change-up . . . played with Angels over the summer in the Peninsula League . . . a two-time all-league pitcher at Chabot JC and all-league for Jack Miramoto at Castro Valley HS . . . also a fine hitter with .246 average last year . . . 2.75 g.p.a. in Phys c. tion . . . varsity stats:

| YEAR | GP | GS | CG | IP | SO | BB | HA | R | ER |
|------|----|----|----|----|----|----|----|----|----|
| 1971 | 16 | 11 | 7 | 84 | 47 | 26 | 82 | 39 | 29 |

PAUL DYER

Coming off of winning seasons in a summer semi-pro league in Oregon, and in the winter Peninsula League, he has been slotted into the pitching rotation . . . a big, young player with fastball and curve . . . was all-state in Oregon this year, striking out 21 in one game . . . enrolled at Cal Tech for a sparkling career at St. Ignatius HS. Batted .481 in 1964. Keating's team in pitching as an all-star prep . . . broke out victory late last season after pitching for the fresh-son team only 5-2/3s innings, striking out seven and giving up only one run . . . coaches like his enthusiasm for the game . . . 2nd. Political Science . . . bats and throws left.

NEIL ERNST

One of the staff's top five pitchers last year, and the coaches expect him to be right up there again in '72 . . . had a sensational string of 23 scoreless innings last season, encompassing a seven inning no-hitter over Humboldt State and a 5-0 shutout at Santa Clara . . . hit hard in a couple starts before the league season he was moved into the bullpen . . . as a reliever he suffered a 4.73 ERA with no decisions in 13 innings . . . an experienced hurler who uses control to great advantage . . . also a fine hitter with a .250 average and an Evan run . . . played for a Canadian semi-pro team over third baseball summer outside of the United States . . . the top athlete-scholars at Cal . . . maintains a 3.9 g.p.a. which easily keeps him in good standing with his Wheeler . . . bats and throws right . . . varsity stats:

| YEAR | GP | GS | CG | IP | SO | BB | HA | R | ER | E | V |
|------|----|----|----|----|----|----|----|----|----|-----|-----|
| 1970 | 13 | 3 | 0 | 33 | 17 | 22 | 34 | 12 | 10 | 2.7 | 2.0 |
| 1971 | 15 | 6 | 2 | 46 | 17 | 18 | 50 | 27 | 20 | 2.5 | 2.0 |

JOEY FORSTER

Senior, 6-2, 190

Being a pitcher who showed signs of developing over the summer . . . and panicked the Bears to Italy in July and was the team's number one . . . coaches believe he can fit in as a starter if he gains confidence . . . has always possessed good breaking pitches . . . pitched only 18 varsity innings in relief last season . . . had 6-2, 3.05 ERA in seasons with frosh-soph before that . . . was all-league pitcher for James Dimino at El Camino HS in Sacramento . . . a home run and slam and struck out 20 in a legion game . . . 2.75 g.p.a. in Business Administration . . . bats and throws right . . .

| YEAR | GP | GS | CG | IP | SO | BB | HA | R | ER | ERA | W-L |
|------|----|----|------|------|----|----|----|----|------|-----|-----|
| 1970 | 2 | 1 | 18-2 | 10 | 12 | 23 | 21 | 14 | 6.75 | 1-2 | |
| 1971 | 13 | 7 | 2 | 48-1 | 27 | 17 | 45 | 30 | 2 | | |

Senior, 6-4, 210

Probably in a class with Del Carlo and Moore as a starting pitcher . . . for the second season in a row, he led the South Dakota Basin League in innings pitched while hurling for the Mobridge Lakers (Coached by Del Youngblood) . . . posted a 1.36 ERA and 9-3 won-loss record, best in the league . . . sat out last spring after transferring from UOP . . . a strong lefty with a good fastball, change and breaking pitch . . . also enjoyed winning winter season with Kansas City team in the Peninsula League . . . all-league pitcher at Homestead HS . . . 3.2 g.p.a. in Business Administration . . . bats and throws left . . .

Junior, 6-0, 180

The college pitchers in Northern California last year . . . had 9-2, 3.14 pitching record for Santa Rosa JC . . . a smart pitcher with a good breaking pitch . . . not over-powering, pitched well for coach Wolfman in Italy this summer . . . led team in strikeouts (67) but also in walks (39) in 82 innings . . . won two of five decisions in Pac-8 with 5.14 ERA . . . pitched well in Santa Maria summer league and in the Peninsula League this winter . . . was an All-league pitcher for coach Ed Major at St. Vincent HS . . . bats and throws left . . . undecided on a major.

Senior, 6-3, 200

Potentially the ace of the staff . . . possibly has the best fastball on the team . . . also has effective slider and sidearm delivery . . . coaches believe he can be one of the best in the league if he becomes more aggressive . . . started out great last year, but slipped at mid-season . . . led team in strikeouts (67) but also in walks (39) in 82 innings . . . won two of five decisions in Pac-8 with 5.14 ERA . . . pitched well in Santa Maria summer league and in the Peninsula League this winter . . . was an All-league pitcher for coach Ed Major at St. Vincent HS . . . bats and throws left . . . undecided on a major.

| YEAR | GP | GS | CG | IP | SO | BB | HA | R | ER | ERA | W-L |
|------|----|----|------|------|----|----|----|----|------|-----|-----|
| 1970 | 2 | 1 | 18-2 | 10 | 12 | 23 | 21 | 14 | 6.75 | 1-2 | |
| 1971 | 13 | 7 | 2 | 48-1 | 27 | 17 | 45 | 30 | 2 | | |

KEN NELSON

Senior, 6-0

The success of an off-season knee operation will probably determine how much this strong right-hander contributes . . . the coaches believe he has as much potential as any one on the staff . . . has one of the best fastballs on the team and can mix it up . . . an injury cost him last season . . . he was more effective statistically the year before when he had a 3.05 ERA and won three of four decisions . . . a memorable moment came in 1970 when he relieved in the fifth inning and hit a homerun and beat USC, 14-5, in Los Angeles . . . Bellarmine HS . . . nicknamed Lumpy . . . 2.8 g.p.a. in Business Administration . . . bats and throws right . . . varsity stats:

| YEAR | GP | GS | CG | IP | SO | BB | HA | R | ER |
|------|----|----|----|------|----|----|----|----|----|
| 1970 | 11 | 3 | 0 | 32-2 | 29 | 12 | 32 | 18 | 2 |
| 1971 | 13 | 7 | 2 | 48-1 | 27 | 17 | 45 | 30 | 2 |

RICHARD STEVENS

The top pitcher on last year's frosh-soph team this year . . . an improving performer ready for his first varsity season work will help coaches place him . . . Berkeley HS . . . 3.1 g.p.a. in Anthropology and Psychology . . . continuing for his doctorate . . . bats and throws right . . .

TERRY WATERS

After pitching for the Bears in Italy, he believes his knee injury that kept him out last season . . . one of the staff's best . . . his fastball was the best . . . years ago when he made the varsity as a freshman . . . feel his potential is unlimited . . . was all-league pitcher at Radcliff at Torrance HS . . . 2.7 g.p.a. in Business Administration . . . bats and throws right . . . varsity stats:

| YEAR | GP | GS | CG | IP | SO | BB | H | R | ER |
|------|----|----|----|----|----|----|----|---|----|
| 1970 | 10 | 2 | 0 | 25 | 25 | 11 | 21 | 2 | 2 |

CATCHERS

WILNER ASH

Became the starter at the end of last season after Rocky Shone was injured and Eric Lindquist hit a slump in league play . . . batted .444 in six conference games and had a home-run and double . . . fielded perfectly in the 12 games he appeared and hit .321 and 2 home runs for the year . . . coaches were very pleased with the way he filled in and say he has great future . . . his quickness is an asset . . . the field and at bat . . . caught for the Bear in Italy over the summer . . . a .400 hitter at St. Elizabeth's HS for coach Bob Howard . . . 2.9 g.p.a. in Business Administration . . . bats and throws right . . . varsity stats:

| YEAR | AVE. | GP | AB | R | H | 2B | 3B |
|------|------|----|----|---|---|----|----|
| 1971 | .321 | 13 | 28 | 6 | 9 | 1 | 0 |

BRIAN**Sophomore, 5-11, 195**

ity and competitiveness could put him right in the thick of the action for the starting job . . . Ash and Lindquist have varsity e, but Brian is labeled a "comer" . . . coaches like his "large" attitude and credit him with a big role in the frosh-soph league championship last year . . . he batted over .300, was the field and was the team leader . . . he's in a catch-up but he's not far behind . . . the coaches say he could probably contribute at another position . . . he hit .480 this past San Francisco summer league . . . his competitiveness by the way he quarterbacked the frosh football team to in 1970 . . . all-league for his father, Robert, an ex-Cal with San Francisco HS . . . Theta Delta Chi fraternity .8 g.p.a. in Political Science . . . bats left and throws

Sophomore, 6-0, 185

s to the outfield as expected, he becomes the third yed a lot last year behind Brian on the frosh-soph future prospect who will probably do most of his on with the frosh-soph club . . . freshmen Don Huber and Thomas of Miramonte HS are also young candid- Serra High School . . . an Economics major with business graduate school . . . Sigma Nu fraternity l bats right.

INFIELDERS**Junior, 5-11, 172**

one of the leading candidates at shortstop . . . ill for the frosh-soph team last year . . . he and Bochy T. was in the double play beautifully around second base . . . the summer, finishing second in league batting as at Red Bluff . . . also faired well for the Peninsula League . . . probably has the on the team, and the coaches say he could be confidence in himself . . . prepped at Alameda ate of Chris Speier of the Giants . . . 3.0 g.p.a. stration . . . bats and throws right.

Junior, 6-2, 195

see inside cover for profile of All American candidate first baseman.

RANDY HOOPER**Sophomore, 5-11, 155**

Coach Wolfman considers him one of the top candidates at after his impressive performance (no Bruce Jenkins, so with the Bears in Italy over the summer . . . good in the adept with the bat, he fits the mold of a leader . . . didn't for the frosh-soph team last year because he reported late, finish out the frosh basketball season . . . full time will go to baseball now . . . Phi Kappa Sigma fraternity . . . son Cal athlete Wayne Hooper, now a prominent Oakland attc g.p.a. in Criminology . . . bats and throws right.

MIKE KOSKI

The leading candidate at third base after finishing last season there . . . moved over from second base at midseason . . . sharp hitter who seldom strikes out . . . batted .288 in first varsity year and led team in stolen bases with 8 . . . steady player who can play almost any infield or outfield position . . . faces a challenge from several young players at third, so will have incentive to be at his best . . . came to Cal after sensational .524 batting average at Las Plumas HS in Oroville . . . also played basketball, football and track as signs of development as a sophomore on frosh- .317 league average . . . married . . . Theta Tau . . . 2.5 g.p.a. in Civil Engineering . . . bat varsity stats:

| YEAR | AVE. | GP | AB | R | H | 2B | 3B |
|------|------|----|-----|----|----|----|----|
| 1971 | .288 | 36 | 139 | 25 | 40 | 3 | 1 |

GENE TATE

The returning starter at second base . . . a hustler who excels on defense . . . made good on 197 of 188 chances between second and third base last year, leading the team with 104 assists . . . started the year at third but traded Koski at midseason . . . gets on any way he can . . . led team in bases on balls (21) and number of times hit by pitched balls (5) . . . batted better in league (.275) than overall (.239) . . . showed he could hit for average on the frosh-soph team as a sophomore . . . batted .309 and led team in runs scored (19) . . . HS . . . Physical Education major . . . bats a varsity stats:

| YEAR | AVE. | GP | AB | R | H | 2B | 3B |
|------|------|----|-----|----|----|----|----|
| 1971 | .239 | 45 | 117 | 13 | 28 | 4 | 0 |

DON THOMAS

A solid young player who is expected to starting role at third base . . . could give the of moving Koski to the outfield . . . coaches ping and power hitting . . . finished strong as the man for the frosh-soph team last year as a fresh Red Bluff in a summer semi-pro league and led average over .400 . . . hit safely twice in five at last year . . . all-league for three years at St Oakland . . . also lettered in basketball . . . 2.7 Administration . . . bats and throws right.

JACK K

Sophomore, 5-9, 155

... infielder who could challenge Tate at second base ...
... he will get a good chance in his first varsity try ... Wolf-
... man was impressed with the way he worked the double play with
... in Italy this summer ... possesses quick hands and leader-
... in the field ... captain of winning frosh-soph team as a
... prepped at Ygnacio Valley HS ... Sigma Chi fraternity
... 0 g.p.a. in Biological Science ... bats and throws right.

Junior, 6-4, 230

... for spring football last year ... was starting off-
... until injured ... emergence of Gary Hernandez
... in a back-up role to start off with ... possesses
... all-league two years at Los Banos HS
... JC ... Physical Education major ... bats

Junior, 6-1, 190

... base and in the outfield ... comes to Cal from
... batted .444 as a sophomore and led the league
... and all-league for Claremont HS ... went to the
... League with coach Youngblood and batted .290
... oaches like his hitting credentials and the fact
... bats and throws right.

WESTBROOK LAND

Freshman, 6-3, 205

... who can play in the infield and outfield ...
... at Washington Union HS in Fresno ... all-league
... power hitter ... also a power runner in foot-
... school frosh running record this past fall ...

OUTFIELDERS

Senior, 5-6, 160

... superb fielding outfielder who started in
... right last spring ... fielded 57 chances per-
... tectly last year ... 186 batting average, how-
... ver, is a concern ... the coaches say,
... the average doesn't tell the full story be-
... cause he almost always made contact and just
... was the victim of bad luck ... led off some-
... times last year and drew 12 walks ... hard to
... pitch to because of his size ... all-league at
... Bellarmine HS ... Phi Kappa Sigma fraternity
... member ... Marketing major ... bats and
... throws left ... varsity stats:

| GP | AR | R | H | 2B | 3B | HR | RBI | League |
|-----|----|----|---|----|----|----|-----|--------|
| 67 | 12 | 15 | 5 | 0 | 0 | 6 | | .190 |
| 113 | 14 | 21 | 1 | 0 | 1 | 5 | | .080 |

CARL BROWN

Sophomore, 5-11, 170

... Could be a surprise ... hit .396 this past summer for an
... Legion team that made it to the state tournament ... also
... El Cerrito HS ... 2.85 g.p.a. ... bats and throws right.

PETE BURMAN

Senior, 6-2, 210

... An outfielder who can also play third base ... had good
... coach Wolfman in Italy ... good hitter with power ...
... year after transferring from UC Davis ... prepped at
... 3.2 g.p.a. in Business Administration ... bats

MIKE CALDER

... One of the top hitters for the frosh-soph team ...
... by Giants ... coaches call him a good outfielder ...
... Nova HS ... 2.5 g.p.a. in Criminology ... bats a

CHARLES CONLEY

... JC transfer from San Mateo College ... fast runner
... CSM ... prepped for former Bear Bob Milano ...
... Social Science major ... bats left, throws right

NEIL CUMMINGS

... Transfer from U.S. Naval Academy who sa-
... batted .370 for the Navy in '70 ... starte
... Italy ... 3.6 g.p.a. in Business Administration ...
... right.

JOHN HARO

... An alternate starter last year ... hits with good
... total bases in 71 at-bats in his first varsity s-
... Pierre in Basin League over the summer ...
... hit .333 for frosh-soph team two years a-
... '69 ... boomed 5 homeruns in 26 freshman
... Sigma fraternity ... 3.0 g.p.a. in Physics I
... throws right ... varsity stats:

| YEAR | AVE. | GP | AB | R | H | 2B | 3B |
|------|------|----|----|----|----|----|----|
| 1971 | .282 | 30 | 71 | 16 | 20 | 5 | 1 |

ERIC LINDQUIST

... Last year's regular catcher may be moved in-
... the outfield ... a solid hitter, his bigge
... blow coming last spring when he knocked
... homerun off Blue Moon Cdom in the victor
... over the Athletics on Evans ... average fe
... late in the season to .247 and he lost h
... starting position ... power hitter, piling
... 33 total bases in the 33 games he played
... last year ... great stats with the freshma
... team in '69 and frosh-soph team in '70 ...
... hit .317 first year and led team in hits, aver-
... age (.446) and RBIs the next despite missing th
... played for coach Joe Vargas at El Cerrito HS ...
... member ... 3.3 g.p.a. in Business Administra-
... throws right ... varsity stats:

| YEAR | AVE. | GP | AB | R | H | 2B | 3B |
|------|------|----|----|----|----|----|----|
| 1971 | .247 | 33 | 81 | 15 | 20 | 4 | 3 |



The best of the outfielders . . . an excellent centerfielder . . . returning starter who was eligible for only the spring quarter last year . . . fielded perfectly in 21 games and hit .337 . . . struck out only three times in 83 at-bats and drew six walks . . . coaches believe he will be right up there for post season honors . . . drafted by the Cardinals . . . has speed and a quick bat . . . batted .473 in Connie Mack . . . outstanding at West Valley JC and Los Gatos HS . . . 2.5 g.p.a. in Sociology . . . bats and throws left . . . varsity stats:

| GP | AB | R | H | 2B | 3B | HR | RBI | League |
|----|----|----|----|----|----|----|-----|--------|
| 21 | 83 | 11 | 28 | 4 | 0 | 0 | 11 | .324 |

HANK SAUER, Jr.

Sophomore, 6-2, 190

A candidate to start after being ineligible to play as a freshman . . . coaches say he has speed, power and a strong arm . . . batted .285 for coach Lougheed in the talented Basin League over the summer . . . outstanding prep at Bellarmine HS for coach Bob Milano . . . batted .428 in senior year . . . son of former major league homerun king Hank Sauer Sr. . . 2.8 g.p.a. in Business Administration . . . bats and throws right.

EXPERIENCE BREAKDOWN

| LETTERMEN | FROSH- | OTHER |
|-------------|-------------|-------------------|
| 12 | MISSING-- 8 | SOPH-- 20 |
| | | CANDIDATES--23 |
| PITCHERS | | |
| Well | Crossen | Eichelberger (HS) |
| Fellis | Dyer | Hicks (HS) |
| | Forster | Lacki (Tr.) |
| | Gegg | Leoni (JC) |
| | Jackson | Muraki (HS) |
| | Stevens | Mutschler (HS) |
| | Weiner | Pestorich (HS) |
| | McKinley | Poovey (HS) |
| | Long | Roche (Tr.) |
| | | Taylor (HS) |
| | | Waters (Var.) |
| CATCHERS | | |
| | Brian | Huber (HS) |
| | Padovan | Thomas |
| INFIELDERS | | |
| | Coffman | Lucich (HS) |
| | Hooper | Vincent (Var.) |
| | LaVigne | Warzecka (JC) |
| | Thomas | Westmoreland (HS) |
| | Tulk | |
| | B. Johnson | |
| OUTFIELDERS | | |
| | Brown | Burman (Var.) |
| | Calder | Conley (JC) |
| | De La Rosa | Cummings (Tr.) |
| | | Sauer, Jr. (HS) |

1972 BASEBALL ROSTER

| PITCHERS | | | | | | | | | |
|-------------------|-----|------|-----|-----|-------|------|---------------|--|--|
| Name | B-T | Ht. | Wt. | Age | Class | Exp. | Hometown | | |
| James Crossen | R-R | 6-2 | 210 | 21 | Sr. | F-S | Danville | | |
| Ray Del Carlo | L-L | 6-1 | 170 | 21 | Sr. | 1V | Castroville | | |
| Paul Dyer | L-L | 6-3 | 210 | 19 | Soph | F-S | San Francisco | | |
| Juan Eichelberger | R-R | 6-1 | 185 | 18 | Fr. | HS | San Francisco | | |
| Neil Ernst | R-R | 6-2 | 185 | 21 | Sr. | 2V | San Francisco | | |
| Dave Forster | R-R | 6-2 | 190 | 21 | Sr. | Sq. | San Francisco | | |
| Bill Gegg | R-R | 6-2 | 185 | 19 | Soph | F-S | Concord | | |
| Randy Hicks | R-R | 5-10 | 160 | 18 | Fr. | HS | San Francisco | | |
| Stan Jackson | L-L | 6-1 | 190 | 20 | Soph | F-S | San Francisco | | |
| Steve Lacki | L-L | 6-4 | 210 | 21 | Sr. | Tr | San Francisco | | |
| Charles Leoni | L-L | 6-0 | 180 | 20 | Jr. | JC | San Francisco | | |
| Eric Long | R-R | 6-1 | 180 | 20 | Soph | F-S | San Francisco | | |
| Gary Lucich | R-R | 6-5 | 195 | 18 | Fr. | HS | San Francisco | | |
| Doak Moore | R-R | 6-3 | 200 | 21 | Sr. | 1V | San Francisco | | |
| Doug Muraki | R-R | 5-10 | 155 | 18 | Fr. | HS | San Francisco | | |
| Greg Mutschler | R-R | 5-11 | 170 | 18 | Fr. | HS | Concord | | |
| Ken Nelson | R-R | 6-4 | 210 | 22 | Sr. | 2V | San Francisco | | |
| Mike Pestorich | R-R | 6-2 | 180 | 18 | Fr. | HS | Fresno | | |
| Butch Poovey | L-L | 5-11 | 155 | 18 | Fr. | HS | Eureka | | |
| Steve Roche | R-L | 6-2 | 170 | 20 | Jr. | F-S | Daly City | | |
| Richard Stevens | R-R | 6-3 | 175 | 20 | Jr. | F-S | Oakland | | |
| Eric Taylor | R-R | 5-9 | 165 | 18 | Fr. | HS | Concord | | |
| Terry Waters | R-R | 6-0 | 205 | 20 | Soph | Sq. | Torrance | | |
| Gary Wiener | R-R | 5-10 | 180 | 19 | Soph | F-S | San Francisco | | |

| CATCHERS | | | | | | | | | |
|------------------|-----|------|-----|-----|-------|------|---------------|--|--|
| Name | B-T | Ht. | Wt. | Age | Class | Exp. | Hometown | | |
| Wilner Ash | R-R | 6-0 | 195 | 19 | Soph | F-S | San Francisco | | |
| Steve Bartkowski | R-R | 6-3 | 210 | 18 | Fr. | HS | San Francisco | | |
| Brad Brian | L-R | 5-11 | 195 | 19 | Soph | F-S | San Francisco | | |
| Don Huber | R-R | 6-1 | 190 | 21 | Jr. | F-S | San Francisco | | |
| Pete Padovan | R-R | 6-0 | 185 | 20 | Soph | F-S | San Francisco | | |
| John Thomas | R-R | 5-11 | 175 | 18 | Fr. | F-S | San Francisco | | |

| INFIELDERS | | | | | | | | | |
|-----------------|-----|------|-----|-----|-------|------|---------------|--|--|
| Name | B-T | Ht. | Wt. | Age | Class | Exp. | Hometown | | |
| Ron Coffman | R-R | 5-11 | 172 | 20 | Jr. | F-S | San Francisco | | |
| Gary Hernandez | L-L | 6-2 | 195 | 20 | Jr. | F-S | San Francisco | | |
| Randy Hooper | R-R | 5-10 | 165 | 19 | Soph | F-S | San Francisco | | |
| Bob Johnson | R-R | 6-3 | 200 | 20 | Soph | F-S | San Francisco | | |
| Mike Koski | R-R | 5-10 | 170 | 21 | Sr. | F-S | San Francisco | | |
| Barry LaVigne | R-R | 6-1 | 175 | 19 | Soph | F-S | San Francisco | | |
| Curt Pihl | L-R | 6-5 | 210 | 19 | Fr. | HS | San Francisco | | |
| Gene Tate | R-R | 6-0 | 175 | 21 | Sr. | F-S | San Francisco | | |
| Don Thomas | R-R | 5-11 | 180 | 20 | Soph | F-S | San Francisco | | |
| Bob Tulk | R-R | 5-9 | 155 | 20 | So. | F-S | San Francisco | | |
| Mike Vincent | R-R | 6-4 | 230 | 21 | Sr. | F-S | San Francisco | | |
| Greg Warzecka | R-R | 6-1 | 190 | 20 | Jr. | F-S | San Francisco | | |
| C. Westmoreland | R-R | 6-3 | 205 | 18 | Fr. | F-S | San Francisco | | |

| OUTFIELDERS | | | | | | | | | |
|-----------------|-----|------|-----|-----|-------|------|---------------|--|--|
| Name | B-T | Ht. | Wt. | Age | Class | Exp. | Hometown | | |
| Dave Alderete | L-L | 5-6 | 160 | 21 | Sr. | F-S | San Francisco | | |
| Carl Brown | R-R | 5-10 | 145 | 19 | Soph | F-S | San Francisco | | |
| Pete Burman | R-R | 5-7 | 175 | 21 | Sr. | F-S | San Francisco | | |
| Mike Calder | L-L | 5-10 | 165 | 21 | Soph | F-S | San Francisco | | |
| Charles Conley | L-R | 6-0 | 165 | 20 | Jr. | F-S | San Francisco | | |
| Neil Cummings | R-R | 6-1 | 185 | 20 | Jr. | F-S | San Francisco | | |
| Gary De La Rosa | R-R | 5-11 | 165 | 20 | Soph | F-S | San Francisco | | |
| John Haro | R-R | 6-0 | 180 | 21 | Sr. | F-S | San Francisco | | |
| Eric Lindquist | R-R | 6-0 | 200 | 21 | Sr. | F-S | San Francisco | | |
| Roy Meisner | L-L | 5-11 | 180 | 22 | Sr. | F-S | San Francisco | | |
| Hank Sauer, Jr. | R-R | 6-2 | 190 | 19 | Soph | F-S | San Francisco | | |

PAC-8 1971 REVIEW

1971 PAC-8 ALL-CONFERENCE

FIRST TEAM

Steve Borley, USC
 Andy Benton, UCLA
 Jim Dunont, Washington
 Sam Henderson, Cal
 Dave Scott, Oregon
 Rod Boone, Stanford
 Eric Raich, USC
 Bob Adams, UCLA
 Dan Cunningham, OSU

Pos.

P
 P
 C
 1b
 2b
 3b
 ss
 of
 of
 of
 Util.

SECOND TEAM

Bob Kammeyer, Stanford
 Mark Sogge, USC
 Craig Perkins, USC
 Mark Lucich, Stanford
 Manny Perez, WSU
 Terry Heaton, WSU
 George Ambrow, USC
 Ron Diggle, UCLA
 Mike Nelson, Stanford
 Bob Adams, UCLA
 Dan Cunningham, OSU

STANDINGS

| | Pac-8 | | | | Overall | |
|------------|-------|----|-------|--------|---------|----|
| Team | W | L | .PCT | GB | W | L |
| USC | 17 | 0 | 1.000 | -- | 43 | 10 |
| Stan | 11 | 6 | .648 | 6 | 38 | 18 |
| UCLA | 1 | 6 | .648 | 6 | 31 | 17 |
| WSU | 8 | 8 | .467 | 9 | 31 | 13 |
| Oregon | 9 | 9 | .439 | 9 1/2 | 19 | 16 |
| UCLA | 10 | 10 | .375 | 10 1/2 | 18 | 17 |
| Cal | 12 | 12 | .294 | 12 | 24 | 24 |
| Washington | 14 | 14 | .067 | 15 | 15 | 20 |

HITTING LEADERS

| | G | AB | R | H | RBI | AVG. |
|----------------|----|----|----|----|-----|------|
| Sam Henderson | 17 | 61 | 7 | 28 | 13 | .459 |
| Al C. Rife | 17 | 55 | 11 | 20 | 6 | .364 |
| Tim L. Johnson | 14 | 50 | 10 | 18 | 9 | .360 |
| Mike Sogge | 15 | 42 | 9 | 15 | 7 | .357 |
| May 1971 | 15 | 46 | 5 | 16 | 8 | .348 |
| Dave Scott | 16 | 55 | 9 | 19 | 13 | .345 |
| Terry Heaton | 15 | 53 | 6 | 18 | 12 | .340 |
| Bob Adams | 17 | 65 | 10 | 22 | 10 | .338 |
| Jeff Port | 14 | 45 | 8 | 15 | 10 | .333 |
| Carl Lundy | 17 | 64 | 12 | 21 | 10 | .328 |
| Dan Cunningham | 16 | 64 | 9 | 21 | 8 | .328 |
| Mike Nelson | 16 | 49 | 9 | 16 | 10 | .327 |
| Roy Young | 17 | 71 | 9 | 23 | 6 | .324 |

PITCHING LEADERS

| | GP | CG | W-L | IP | R | ET | SO | BB | ERA |
|---------------------------|----|----|-----|------|----|----|----|----|------|
| 1. Steve Borley, USC | 6 | 6 | 6-0 | 48 | 3 | 3 | 28 | 16 | 0.56 |
| 2. Eric Raich, USC | 4 | 0 | 3-0 | 18 | 5 | 4 | 18 | 7 | 2.00 |
| 3. Gary Johnson, USC | 6 | 3 | 3-2 | 42 | 18 | 10 | 52 | 9 | 2.14 |
| 4. Bob DiPietro, Stanford | 4 | 2 | 2-0 | 24 | 10 | 16 | 13 | 16 | 2.25 |
| 5. Mark Sogge, USC | 7 | 4 | 4-0 | 36 | 11 | 10 | 17 | 7 | 2.50 |
| 6. Bill Susa, UCLA | 7 | 2 | 3-0 | 28-2 | 9 | 8 | 31 | 14 | 2.51 |
| 7. Ray Boone, Cal | 7 | 4 | 1-6 | 42 | 18 | 13 | 17 | 11 | 2.79 |

SOUTHERN DIVISION OF PAC-8

SOUTHERN CAL

April 14 - Evans Diamond, 2:30 p.m.
 April 15 - Evans Diamond (2), Noon
 April 28 - Los Angeles, 2:30 p.m.
 April 29 - Los Angeles (2) Noon

Coach:

SID:

1971 Record:

Conference:

Cal Series:

Top Returnees:

Rod Dedeaux

Don Andersen 213 746-2224

Won 53, Los 13 (NCAA champions)

Won 17, Lost 0 (1st Place)

USC 100-Cal 76

Daryl Andersen (1b, .337), Fred Lynr (Am team), Tim Steele (OF, .328), (ss, .314), Jeff Port (3b, .260), Pan Pedersen (OF, .301), Sam Ceci (C, (p, 14-1, 1.86), Greg Widman (p, 9-3, 3.89, #1 pro draft

Main Losses:

Eric Raich (p, 3-0, 2.0 in Pac-8), Su 0.56 in Pac-8), Mike Ball (2b, .35 Perkins (c, 12 RBIs in Pac-8), Gory

New Players:

Ed Putman (c-of, #2 draft of Russ McQueen (p, frosh), Steve Ke

Outlook:

Every starter will have experience 7th NCAA championship team. of hitting, led possibly by Fred three pitchers graduated, but So victories and Widman and Scarberry The team to beat.

STANFORD

April 21 - Evans Diamond, 2:30

April 22 - Stanford (2), Noon

May 12 - Stanford, 2:30 p.m.

May 13 - Evans Diamond (2) N

Coach:

SID:

1971 Record:

Conference:

Cal Series:

Top Returnees:

Ray Young

Bob Murphy 321-2300, Ext. 44

Won 39, Lost 20, Tied 1

Won 11, Lost 6 (tie for second

Cal, 143-97.

Rod Boone (of, .363), Mark O'Brien (ss, .287), Glen Johnson (of, .246), Dave Edson (2b, .26 1.97), Bob Kammeyer (p, 9-5, 2.7 Bob DiPietro (p, 4-0, 2.36).

Main Losses:

Bob Borchers (2b), Bob Marshall (p, 2-3 in Pac-8), Jim Coate (

New Players:

Andy Bielanski (transfer), M Nick Petersen (transfer).

Outlook:

A top contender with almost year's runner-up team.

UCLA

April 17 - Los Angeles, 2:30 p.m.

April 18 - Los Angeles (2), Noon

May 5 - Evans Diamond, 2:30 p.m.

May 6 - Evans Diamond (2), Noon

Coach:

SID:

1971 Record:

Conference:

Cal Series:

Top Returnees:

Art Reichle

Vic Kelley 213 825-3732

Won 38, Lost 18

Won 11, Lost 6 (tie for second

Cal 81-58

Mike Gerakos (3b, .346), Bob Stolz (1b, .282), Danny Guerra Lou Gomez (ss, .441 part season 2.36), Bill Susa (p, 4-0, 2.71) Barry Woodruff (p, 7-2, 3.36).

Main Losses:

Ron Diggle (of, .324), Bob Pope (p, 7-4, 2.35).

New Players:

Mickey Cureton (of, former for (ss, JVs), Mark Swedlow (of, J son of Ralph Kiner).

Outlook:

Minus Diggle and Pope, alme

1971 VARSITY RESULTS

(Won 24, Lost 24)

| OPP | CAL | OPP |
|---------|---------------------|-----|
| Hayward | 0 *Stanford | 3 |
| Pomona | 12 St. Mary's | 3 |
| State | 1 *USC | 10 |
| State | 8 *UCLA | 11 |
| State | 6 *UCLA | 8 |
| State | 6 Sacramento State | 11 |
| State | 6 *UCLA | 1 |
| State | 1 *USC | 2 |
| State | 0 *USC | 10 |
| State | 4 Cal State Hayward | 3 |
| State | 0 Santa Clara | 7 |
| State | 1 Washington State | 0 |
| State | 0 Washington State | 16 |
| State | 5 Washington | 5 |
| State | 2 Washington | 2 |
| State | 7 Oregon | 4 |
| State | 14 Oregon | 8 |
| State | 2 Oregon State | 1 |
| State | 9 Oregon State | 5 |
| State | 8 Stanford | 4 |
| State | 4 Stanford | 2 |
| State | 8 | |
| State | 4 | |
| State | 2 | |
| State | 5 | |
| State | 2 | |
| State | 9 | |

* Pac-8 (4th in Southern Division, 5-12)
Anaheim Tournament (sixth, 2-4)
@ Away games ((11-16))

BATTING

| | AVE | GP | AB | R | H | 2B | 3B | HR | RBI |
|------------------|------|----|------|-----|-----|----|----|----|-----|
| ANDERSON, 1b | .387 | 46 | 163 | 29 | 63 | 13 | 8 | 4 | 26 |
| Boss, 2b-ss | .339 | 29 | 59 | 10 | 20 | 4 | 2 | 0 | 13 |
| Lee, c | .338 | 21 | 71 | 6 | 24 | 3 | 0 | 0 | 11 |
| ISNER, cf | .337 | 21 | 83 | 11 | 28 | 4 | 0 | 0 | 8 |
| H, c | .321 | 13 | 28 | 6 | 9 | 1 | 0 | 2 | 3 |
| Whitaker, rf | .319 | 46 | 141 | 26 | 45 | 10 | 1 | 4 | 28 |
| McGowan, lf-3b | .315 | 42 | 130 | 21 | 41 | 3 | 1 | 3 | 21 |
| KOSKI, 2b-Cb | .288 | 36 | 139 | 25 | 40 | 3 | 1 | 2 | 12 |
| HART, cf | .282 | 30 | 71 | 16 | 20 | 5 | 1 | 1 | 15 |
| Clark, 3b | .255 | 28 | 55 | 12 | 14 | 1 | 1 | 2 | 7 |
| LINDQUIST, c | .247 | 33 | 81 | 15 | 20 | 4 | 3 | 1 | 14 |
| DEL CARLO, p. | .241 | 17 | 29 | 3 | 7 | 0 | 2 | 0 | 2 |
| TATE, 2b-ss-3b | .239 | 45 | 117 | 12 | 28 | 4 | 0 | 3 | 17 |
| Don Vercos, ss | .218 | 24 | 78 | 13 | 17 | 1 | 1 | 0 | 8 |
| McGOGRE, p. | .207 | 20 | 29 | 3 | 6 | 4 | 0 | 0 | 2 |
| ALDEPES, cf | .186 | 40 | 113 | 14 | 21 | 1 | 0 | 1 | 5 |
| BURMAN, lf | .163 | 24 | 49 | 4 | 8 | 2 | 0 | 0 | 2 |
| Franklin, 3b | .147 | 24 | 34 | 8 | 5 | 0 | 0 | 0 | 1 |
| CAL FORM. TOTALS | .277 | 48 | 1567 | 242 | 434 | 65 | 21 | 23 | 204 |

PITCHING

| | W-L | IP | H | R | ER | BB | SO | ERA |
|----------|-------|------|-----|-----|-----|-----|-----|------|
| Franklin | 1-6 | 84 | 82 | 39 | 29 | 26 | 47 | 3.11 |
| JO | 6-6 | 82 | 90 | 48 | 32 | 39 | 67 | 3.51 |
| McGowan | 0-1 | 20-1 | 27 | 21 | 8 | 10 | 19 | 3.54 |
| McGowan | 2-3 | 46-1 | 50 | 27 | 20 | 18 | 17 | 3.88 |
| McGowan | 2-4 | 48-1 | 45 | 30 | 21 | 17 | 27 | 3.91 |
| McGowan | 5-2 | 57 | 58 | 37 | 25 | 34 | 34 | 3.95 |
| McGowan | 3-0 | 23 | 20 | 14 | 12 | 19 | 20 | 4.70 |
| McGowan | 1-2 | 18-2 | 23 | 21 | 14 | 12 | 10 | 6.75 |
| McGowan | 24-24 | 393 | 414 | 248 | 167 | 185 | 250 | 3.82 |

es pl. v's returning.

CAL'S INTERCOLLEGIATE RECORD

| Opponent | Cal Won | Opp. Won | Opponent |
|--------------------|---------|----------|------------------|
| Amherst | 1 | 1 | Ohio State |
| Arizona | 1 | 9 | Oregon |
| Arizona State | 3 | 5 | Oregon State |
| Boston College | 1 | 0 | Pacific |
| Bradley | 2 | 0 | Pepperdine |
| Brigham Young | 5 | 3 | Pennsylvania |
| Cal Poly (Pomona) | 4 | 3 | Penn State |
| Cal Poly (SLO) | 20 | 2 | Portland |
| Cal State, Hayward | 10 | 3 | Portland St. |
| Carleton College | 1 | 0 | Princeton |
| Central Michigan | 1 | 0 | Redlands |
| Chapman | 2 | 0 | Rutgers |
| Chico State | 11 | 1 | Sacramento State |
| Colorado State | 1 | 0 | San Diego |
| Cornell | 1 | 0 | San Diego State |
| Dartmouth | 1 | 1 | San Jose State |
| UC Davis | 31 | 0 | San Fernando |
| Delaware | 1 | 0 | SF State |
| Denver | 2 | 0 | UC Santa Barbara |
| Detroit U. | 2 | 0 | Springfield |
| Fordham | 0 | 1 | Stanford |
| Fresno State | 22 | 23 | Stanislaus |
| Harvard | 2 | 1 | St. Mary's |
| Hawaii | 1 | 1 | Santa Cl |
| Humboldt State | 6 | 2 | Syracuse |
| Idaho State | 5 | 1 | Texas |
| Iowa State | 1 | 0 | UCLA |
| Los Angeles State | 2 | 0 | USF |
| Long Beach State | 1 | 1 | USC |
| Luther College | 2 | 0 | Utah |
| Loyola (L.A.) | 1 | 3 | Utah State |
| Michigan | 3 | 5 | Washington |
| Michigan State | 3 | 1 | Washington State |
| Minnesota | 3 | 1 | Western Michigan |
| Nebraska | 3 | 2 | Westmont |
| Nevada | 2 | 0 | Williams College |
| Northwestern | 1 | 0 | Wisconsin |
| Notre Dame | 2 | 3 | Wyoming |
| Occidental | 1 | 0 | Yale |

CAL VS. OAKLAND A'S

APRIL 17, EVANS DIAMOND

The Oakland A's may take the Cal baseball team a little more seriously in this fourth renewal of the East Bay's college baseball rivalry. The first of the series' games on Evans Diamond ended in a 6-5 Cal triumph last year. Eric Lindquist belted a two-run homerun off John 'Blue Moon' Odom to highlight the Bears' victory of 1971. The defending American West champion took a 2-1 edge over Cal, having beaten the Bears 6-1 and 10-5 in the first two games at the Coliseum.

BEARS PLAN NORTHERN SUMMER 1

Although not quite as exotic as the tours of Japan in past two summers, the Bears have planned another summer for 1972. A nine-game schedule in Anchorage, Alaska, is the core of this year's itinerary.

CAL ALL-AMERICA SELECTIONS

| | |
|-----------------------|----------------------------|
| 1958 - Tom Palma, of | 1961 - John Rebello, p |
| 1959 - John Nitch, 1b | 1965 - Andy Messersmith, p |
| 1960 - Kough, of | 1966 - Bill Frost, p |
| 1961 - Thompson, c | 1971 - Gary Hernandez, 1b |
| 1962 - Weiss, p | |
| 1963 - Robinson, ss | |

NCAA DISTRICT 8 SELECTIONS

(FIRST TEAM ONLY)

| | |
|----------------------------|---------------------------|
| 1957 - Doug Weiss, p | 1960 - Noel Barnes, 1b |
| Charles Thompson, c | 1962 - Bill Oakley, p |
| Earl Robinson, ss | 1964 - Mike Epstein, 1b |
| 1965 - Andy Messersmith, p | 1966 - Bill Frost, p |
| 1967 - Jim Corcoran, of | 1971 - Gary Hernandez, 1b |

CIBA CHAMPIONS

| |
|------------------------------|
| 1947—CALIFORNIA and USC |
| 1948—USC |
| 1949—USC |
| 1950—Stanford |
| 1951—USC |
| 1952—USC |
| 1953—USC and Stanford |
| 1954—USC |
| 1955—USC |
| 1956—USC |
| 1957—CALIFORNIA and USC |
| 1958—USC |
| 1959—USC |
| 1960—CALIFORNIA and USC |
| 1961—USC |
| 1962—Santa Clara |
| 1963—USC |
| 1964—USC |
| 1965—CALIFORNIA and Stanford |
| 1966—USC |

CIF-8 CHAMPIONS

| | | |
|------------|-------------|------------|
| 1968 - USC | 1969 - UCLA | 1970 - USC |
| 1971 - USC | | |

HT NCAA CHAMPIONS

| |
|-------------------------|
| 1959 - USC |
| 1960 - USC |
| 1961 - USC* |
| 1962 - Santa Clara |
| 1963 - USC* |
| 1964 - USC |
| 1965 - Washington State |
| 1966 - USC |
| 1967 - Stanford |
| 1968 - USC* |
| 1969 - UCLA |
| 1970 - USC* |
| 1971 - USC* |

* National Champion

CAL BASEBALL HISTORY

YEAR-BY-YEAR RECORD

| Year | Coach | W | L | T | Pct. |
|------|-------------------|---|---|---|-------|
| 1892 | | 0 | 2 | 0 | .000 |
| 1893 | | 0 | 3 | 0 | .000 |
| 1894 | | 0 | 2 | 0 | .000 |
| 1895 | | 0 | 2 | 0 | .000 |
| 1896 | | 1 | 2 | 0 | .333 |
| 1897 | | 2 | 1 | 0 | .667 |
| 1898 | | 1 | 2 | 0 | .333 |
| 1899 | | 2 | 0 | 0 | 1.000 |
| 1900 | | 2 | 1 | 0 | .667 |
| 1901 | | 2 | 1 | 0 | .667 |
| 1902 | | 2 | 0 | 0 | 1.000 |
| 1903 | | 2 | 0 | 0 | 1.000 |
| 1904 | | 2 | 1 | 0 | .667 |
| 1905 | | 2 | 0 | 0 | 1.000 |
| 1906 | | 1 | 1 | 0 | .500 |
| 1907 | McCarthy | 1 | 2 | 0 | .333 |
| 1908 | McCarthy | 9 | 9 | 0 | .500 |
| 1909 | W. Z. (Zeb) Smith | 2 | 1 | 0 | .667 |

| Year | Coach | W | L | Pct. |
|------|----------------|----|----|------|
| 1927 | Carl Zamloch | 4 | 8 | .333 |
| 1928 | Carl Zamloch | 8 | 4 | .667 |
| 1929 | Carl Zamloch | 16 | 7 | .696 |
| 1930 | Clint Evans | 12 | 3 | .800 |
| 1931 | Clint Evans | 15 | 7 | .682 |
| 1932 | Clint Evans | 16 | 6 | .727 |
| 1933 | Clint Evans | 19 | 9 | .679 |
| 1934 | Clint Evans | 25 | 6 | .833 |
| 1935 | Clint Evans | 20 | 9 | .690 |
| 1936 | Clint Evans | 18 | 13 | .581 |
| 1937 | Clint Evans | 20 | 7 | .741 |
| 1938 | Clint Evans | 39 | 8 | .830 |
| 1939 | Clint Evans | 24 | 9 | .727 |
| 1940 | Clint Evans | 22 | 10 | .688 |
| 1941 | Clint Evans | 37 | 11 | .771 |
| 1942 | Clint Evans | 22 | 5 | .815 |
| 1943 | Clint Evans | 23 | 9 | .719 |
| 1944 | Clint Evans | 9 | 14 | .391 |
| 1945 | Clint Evans | 12 | 9 | .571 |
| 1946 | Clint Evans | 24 | 9 | .727 |
| 1947 | Clint Evans | 31 | 10 | .750 |
| 1948 | Clint Evans | 20 | 14 | .588 |
| 1949 | Clint Evans | 32 | 17 | .653 |
| 1950 | Clint Evans | 24 | 13 | .649 |
| 1951 | Clint Evans | 22 | 16 | .577 |
| 1952 | Clint Evans | 21 | 16 | .568 |
| 1953 | Clint Evans | 22 | 15 | .595 |
| 1954 | Clint Evans | 19 | 11 | .633 |
| 1955 | George Wolfman | 17 | 16 | .515 |
| 1956 | George Wolfman | 25 | 9 | .735 |
| 1957 | George Wolfman | 35 | 10 | .778 |
| 1958 | George Wolfman | 19 | 12 | .613 |
| 1959 | George Wolfman | 22 | 13 | .629 |
| 1960 | George Wolfman | 30 | 14 | .682 |
| 1961 | George Wolfman | 29 | 10 | .744 |
| 1962 | George Wolfman | 24 | 20 | .545 |
| 1963 | George Wolfman | 19 | 21 | .475 |
| 1964 | George Wolfman | 25 | 17 | .595 |
| 1965 | George Wolfman | 29 | 14 | .674 |
| 1966 | George Wolfman | 32 | 14 | .696 |

| | | | | |
|---------------|----------------|-------------|------------|-------------|
| 1967 | George Wolfman | 17 | 27 | .386 |
| 1968 | George Wolfman | 24 | 24 | .500 |
| 1969 | George Wolfman | 31 | 19 | .620 |
| 1970 | George Wolfman | 28 | 19 | .596 |
| 1971 | George Wolfman | 24 | 24 | .500 |
| TOTALS | | 1199 | 686 | .636 |

CAL'S MAJOR LEAGUE PLAYERS

| | |
|---------|------------------------------|
| 1905-13 | Redlegs, Cubs |
| 1908-12 | Cardinals |
| 1909-10 | Philadelphia A's |
| 1910-15 | Boston Braves, S.L. Browns |
| 1913 | Yankees |
| 1921-22 | Pirates |
| 1923-33 | Cardinals, Redlegs |
| 1929 | Philadelphia A's |
| 1938-51 | Philadelphia A's, Indians |
| 1947 | Phillies |
| 1949-54 | Pirates, Cards, Red Sox |
| 1950-61 | Yanks, Senators, Red Sox |
| 1957-58 | Cubs |
| 1961-65 | Dodgers, Orioles |
| 1966 | Cubs |
| 1966- | Cubs, Cards, Expos |
| 1966- | Orioles, Senators, Athletics |
| 1968- | Angels |

EDWIN E. LORD, JR. AWARD

(Most Inspirational player.)

| | |
|------------------------|-------------|
| 1964 - Mike Wickersham | 1969 - Dave |
| 1965 - Al Diamond | Jim |
| 1966 - Tom Cooper | 1970 - Don |
| 1967 - Dennis Dalton | 1971 - St |
| 1968 - Rodger Gray | |

CLINT EVANS AWARD

(Most Valuable Player)

| | |
|-----------------------|-------------------|
| 1954 - Richard Ament | 1963 - Dave Myers |
| 1955 - Ron Gaggero | 1964 - Mike |
| 1956 - Gene Stang | 1965 - Mike |
| 1957 - Doug Weiss | 1966 - Bill |
| 1958 - Tom Palma | 1967 - Bob |
| 1959 - Roger Gregg | 1968 - Dave |
| 1960 - Ted Settle | 1969 - Dave |
| 1961 - John Rebello | 1970 - Jim |
| 1962 - William Oakley | 1971 - Gary |

THE COACHES' RECORD

| YEARS | G | W | L | T | PCT. |
|-----------|------|------|-----|----|------|
| 1892-1906 | 37 | 19 | 18 | 0 | .514 |
| 1907-1908 | 21 | 10 | 11 | 0 | .476 |
| 1909-1910 | 6 | 3 | 3 | 0 | .500 |
| 1911-1915 | 62 | 39 | 21 | 2 | .650 |
| 1916-1929 | 249 | 146 | 93 | 10 | .614 |
| 1918 | 5 | 4 | 1 | 0 | .800 |
| 1930-1954 | 811 | 548 | 256 | 7 | .682 |
| 1955-1971 | 719 | 430 | 283 | 6 | .598 |
| | 1862 | 1175 | 662 | 25 | .631 |

FOR BATTING LEADERS

(200 AB Minimum)

| Years | AB-H |
|-------------|---------|
| 1963-64 | 218-83 |
| 1943, 47-48 | 424-161 |
| 1960-61 | 221-80 |
| 1936-38 | 227-98 |
| 1946-48 | 405-142 |
| 1946-48 | 405-138 |

CAREER WINS

| Years | Defeats |
|---------|---------|
| 1955-57 | 12 |
| 1939-41 | 8 |
| 1958-60 | 11 |
| 1952-55 | 21 |
| 1946-47 | 4 |
| 1947-48 | 10 |
| 1960-62 | 12 |
| 1964-66 | 15 |
| 1961-62 | 4 |
| 1965-66 | 5 |

ROBERT A. ROOS BATTING AVERAGE

(Awarded to Leading Hitter Each Year)

| | | | |
|-------------------------|------|---------------|--|
| 1907 - T. K. Sweesy | .350 | 1939 - Ar | |
| 1908 - R. E. Myers | .400 | 1940 - Ed | |
| 1909 - W. F. Smith | .328 | 1941 - El | |
| F. A. Lewis | .328 | 1942 - Harold | |
| 1910 - C. A. Allen | .280 | 1943 - Cliff | |
| 1911 - J. C. Salisbury | .265 | 1944 - Jerr | |
| 1912 - R. W. Coane | .316 | 1945 - Ken | |
| 1913 - C. V. Goodwin | .347 | 1946 - Ed | |
| 1914 - F. W. Rubke | .406 | 1947 - Lyle | |
| 1915 - L. E. Adair, Jr. | .369 | 1948 - Cliff | |
| 1916 - Ray Rohwer | .354 | 1949 - Don | |
| 1917 - Ray Rohwer | .432 | 1950 - Syl | |
| 1918 - A. C. Rowe | .326 | 1951 - Cas | |
| 1919 - J. W. Butler | .344 | 1952 - Tom | |
| 1920 - Ray Rohwer | .378 | 1953 - Tom | |
| 1921 - Ed Radenbaugh | .415 | 1954 - John | |
| 1922 - L. A. Thompson | .500 | 1955 - L | |
| 1923 - No selection | | 1956 - Earl | |
| 1924 - A. W. Larr | .307 | 1957 - Bernie | |
| 1925 - George Smith | .432 | 1958 - Tom | |
| 1926 - Roland Douthit | .305 | 1959 - Ga | |
| 1927 - Roland Douthit | .360 | 1960 - A | |
| 1928 - Bob Stevenson | .428 | 1961 - K | |
| 1929 - William Burgett | .513 | 1962 - Ale | |
| 1930 - Harry Butler | .387 | 1963 - Mik | |
| 1931 - Ed Kirwin | .380 | 1964 - Mik | |
| 1932 - Cecil Kyle | .414 | 1965 - Mik | |
| 1933 - Delbert Thompson | .436 | 1966 - Rick | |
| 1934 - Avelino Sanchez | .376 | 1967 - Bob | |
| 1935 - James Grilk | .377 | 1968 - Bob | |
| 1936 - Sam Chapman | .431 | 1969 - Dave | |
| 1937 - Joe Koral | .367 | 1970 - Jim | |
| 1938 - Ray Winterbottom | .396 | 1971 - Gary | |

CAL TEAM RECORDS

BATTING

Longest hit - 8 innings vs. Santa Clara, 1943
 Most hits, single game - 27 vs. Stanford, 1925 (27-5)
 vs. Stanford, 1927 (27-5)
 vs. UC Davis, 1949 (27-3)
 Most hits, single game - 30 by Santa Clara, 1956 (12-30)
 Most hits, single game - 42, Santa Clara (30), Cal (12), '56
 Most hits, season - 321, 1957
 Most hits, game - 44 vs. UC Davis, 1959
 - 454, 1957
 Most hits, season - 39, 1938 (39-8)
 Most hits, game - 27, 1967 (17-27)
 Most hits, season - 1, 1958, 1957
 Most hits, game - 4 vs. USF, 1959; vs. Oregon, 1969
 Most hits, game - 4 vs. S.F. State, 1965
 Most hits, game - 39, 1957
 Most hits, game - 8 vs. S.F. State, 1951
 Most hits, game - 61, 1957
 Most hits, game - 38 vs. UC Davis, 1957
 Most hits, game - 665, 1957
 Most hits, game - vs. UC Davis, 1957
 Most hits, season - 7, 1957
 Most hits, game - 8 vs. S.F. State, 1959; vs. Santa Clara, '58
 Most hits, season - 97, 1957
 Most hits, season - .311, 1938

FIELDING

Most hits, season - 1985, 1969
 Most hits, season - 352, 1969
 Most hits, season - 39, 1968
 Most hits, season - 6, 1946
 Most hits, season - 43, 1950
 Highest fielding percentage, season - 987, 1961

PITCHING

Most teams, season - 12, 1966
 Most teams, season - 410, 1966
 Most complete games, season - 237, 1969
 Most Cal team, season - 342, 1969
 Most Cal team, season - 242, 1957
 Most ERA, season - 81.83, 1966

INDIVIDUAL RECORDS

PITCHING

Most teams, season - 14, Doug Weiss, 1957
 Most teams, season - 31, Doug Weiss, 1955-57
 Most teams, season - 149, Doug Weiss, 1957
 Most teams, season - 344 2/3, Doug Weiss, 1955-57
 Most teams, season - 21, Jackie Jensen, 1947
 Most teams, season - 48, Rich Nye, 1964-66
 Most teams, season - 18, Bill Frost vs. UOP, 1966
 Most teams, season - Ted Seattle vs. Santa Clara, 1960

Most strikeouts, season - 169, Bill Frost, 1966
 Most strikeouts, career - 275, Doug Weiss, 1955-57
 Most shutouts, season - 4, Bill Frost, 1966
 Most complete games, season - 12, Doug Weiss, 1957
 Most batters faced, season - 506, Doug Weiss, 1957
 Lowest ERA, season - 1.12, Bill Frost, 1966, Bill Frost, 1968
 Lowest ERA, career - 1.59, Bill Frost, '65-66 (16" ?)
 No-Hitters: Bill Frost vs. UOP, 1966 (3-0)
 Andy Messersmith & Bill Frost, vs. UC
 Robert Jordan vs. Loyola (L.A.), 191

BATTING

Season batting average - .513, William Burgett, 1942
 Most hits, game - 6, Cliff McClain, 1948, vs. St. Mary's
 Most hits, season - 63, Gary Hernandez, 1971
 Most hits, career - 161, Cliff McClain, 1943, 1944
 Most RBIs, game - 6, Lyle Palmer, 1946; John Enos, 1957
 Most RBIs, season - 45, Charlie Thompson, 1957
 Most RBIs, career - 100, John Fiscalini, 1946-48
 Most runs, game - 5 Carl Hoberg, 1940; Ray Amodeo, 1957
 Most runs, season - 44, Joe Fiscalini and Lyle Palmer, 1946
 Most runs, career - 120, Lyle Palmer, 1946-48
 Most total bases, game - 10, Don Wilcox, 1969
 Most total bases, season - 104, Gary Hernandez, 1966
 Most total bases, career - 188, John Fiscalini, 1946-48
 Most home runs, game - Seven with 2
 Most home runs, season - 8, Jackie Jensen, 1947
 Most home runs, career - 11, Jackie Jensen, 1947
 Most triples, game - 2, Earl Robinson, 1956
 John Shaw, 1965, vs. UC
 Bob Leatherwood, 1967
 Wayne Hooper, 1947
 Most triples, season - 8, Gary Hernandez, 1966
 Most triples, career - 12, Bob Puccinelli, 1966
 Most doubles, game - 3, Al Diamond, '65; Gary Hernandez, '71; Cliff McClain, 1943
 Most doubles, season - 13, Gary Hernandez, 1966
 Most doubles, career - 21, Charles Thompson, 1946
 Most games played, career - 132, Don Wilcox, 1946
 Most stolen bases, game - 5, Bob Puccinelli, 1966
 Most stolen bases, season - 24, Tom Keough, 1952
 Most stolen bases, career - 54, Dick Ament, 1946
 Most walks, game - 4, Ron Coggero, 1956, vs. St. Mary's
 Most walks, season - 38, Bob Puccinelli, 1966
 Most walks, career - 85, Lyle Palmer, 1946-48
 Most strikeouts, game - 4, Kim Elliott, '57 vs. St. Mary's
 Most strikeouts, season - '45, Jerry Vitatoe, 1945
 Most strikeouts, career - 76, Don Wilcox, 1946
 Most at-bats, game - 7, Gregg McGarrey, 1957
 Most at-bats, season - 181, Dennis Dalton, 1966
 Most at-bats, career - 422, Roger Gregg, 1957-59

FIELDING

Most putouts, game - 20, Bob Rebuschatis, 1966
 Most putouts, season - 370, Warren Lavorel, 1966
 Most putouts, career - 959, Bob O'Dell, 1946
 Most assists, game - 13, Dennis Dalton, 1966
 Most assists, season - 162, Dennis Dalton, 1966
 Most assists, career - 300, Jack Albright, 1946
 Most errors, game - 3 Al Diamond, Mike Whit
 Dennis Dalton, Don Mc
 Most errors, season - 23, Jim Brown, 1946-47
 Most errors career - 46, Jim Brown, 1946-47

1972 SPRING SPORTS HOME SCHEDULE

| DATE | TIME | SPORT | OPPONENT |
|-----------------|------|------------|-------------------------|
| JANUARY | | | |
| | | Basketball | Oklahoma City |
| | | Basketball | Washington |
| | | Boxing | Alumni |
| | | Basketball | Washington State |
| | | Wrestling | UCLA |
| | | Gymnastics | Utah |
| | | Wrestling | New Mexico |
| | | Basketball | New Mexico State |
| | | Boxing | Chico State |
| | | Wrestling | Arizona |
| | | Tennis | Alumni |
| | | Basketball | UC, Davis |
| | | Rugby | St. Mary's |
| | | Boxing | Nevada |
| FEBRUARY | | | |
| | | Gymnastics | UCLA & Washington St. |
| | | Rugby | UCLA |
| | | Basketball | Stanford |
| | | Basketball | Oregon |
| | | Rugby | UOP |
| | | Baseball | Alumni |
| | | Basketball | Oregon State |
| | | Baseball | Phillie Rookies |
| | | Baseball | St. Mary's |
| | | Gymnastics | Washington |
| | | Boxing | Navy |
| | | Baseball | USF |
| | | Baseball | Sonoma State |
| | | Baseball | Cal State, Hayward |
| | | Baseball | Chico State (2) |
| | | Wrestling | Stanford |
| MARCH | | | |
| | 2:30 | Baseball | San Jose State |
| | 8:00 | Gymnastics | Iowa State |
| | 8:00 | Basketball | UCLA |
| | 1:30 | Rugby | Stanford |
| | 1:30 | Track | Sacramento St. & Athens |
| | 1:30 | Basketball | USC |
| | 2:30 | Baseball | UC, Davis |
| | 2:30 | Rugby | Brigham Young |
| | 2:30 | Baseball | Stanislaus State |

| DATE | TIME | SPORT | OPPONENT |
|--------------|------|------------|----------------------|
| Sat. 11 | Noon | Baseball | Humboldt State (2) |
| Sat. 11 | 1:30 | Rugby | UC, Santa Barbara |
| Sat. 11 | 1:30 | Track | San Jose State |
| Tue. 14 | 2:30 | Baseball | Santa Clara |
| Fri. 17 | 2:30 | Baseball | Fresno State |
| Sat. 18 | Noon | Baseball | Corvallis |
| Wed. 22 | 2:00 | Tennis | Oregon State |
| Sat. 25 | | Crew | St. Mary's |
| Sun. 26 | | Crew | Alumni |
| Tue. 28 | | Crew | San Jose State |
| Wed. 29 | 2:00 | Baseball | Azusa Pacific |
| Thurs. 30 | 2:00 | Tennis | Oregon State |
| Thurs. 30 | 3:30 | Rugby | UC, Riverside |
| APRIL | | | |
| Sat. 1 | 1:30 | Rugby | Air Force |
| Mon. 3 | 2:00 | Tennis | New Mexico |
| Tue. 4 | 2:00 | Tennis | San Jose State |
| Tue. 4 | 2:30 | Baseball | San Jose State |
| Wed. 5 | 2:30 | Tennis | San Jose State |
| Thurs. 6 | 2:00 | Tennis | Arizona State |
| Sat. 8 | | Crew | Long Beach |
| Thurs. 13 | 2:00 | Tennis | USF |
| Fri. 14 | 2:30 | Baseball | USC |
| Sat. 15 | Noon | Baseball | USC (2) |
| Sat. 15 | 1:30 | Track | Washington State |
| Fri. 21 | 2:00 | Tennis | UCLA |
| Fri. 21 | 2:30 | Baseball | Stanford |
| Sat. 22 | 2:00 | Tennis | USC |
| Tue. 25 | 2:30 | Baseball | Santa Clara |
| Sat. 29 | | Crew | Washington |
| MAY | | | |
| Fri. 5 | 2:30 | Baseball | UCLA |
| Sat. 6 | Noon | Baseball | UC, Santa Barbara |
| Sat. 6 | 1:00 | Tennis | Stanford |
| Sat. 6 | 1:30 | Track | Stanford |
| Mon. 8 | 2:30 | Baseball | UC, Irvine |
| Sat. 13 | Noon | Baseball | Stanford |
| Thurs. 18 | Day | Tennis | Pac-8 Championships |
| Fri. 19 | Day | Tennis | Pac-8 Championships |
| Sat. 20 | Day | Tennis | Pac-8 Championships |
| Sat. 20 | 1:30 | Gymnastics | Men's Olympic Trials |
| Sat. 20 | 7:30 | Gymnastics | Men's Olympic Trials |
| JUNE | | | |
| Sat. 10 | | Track | Ken. ed. State |