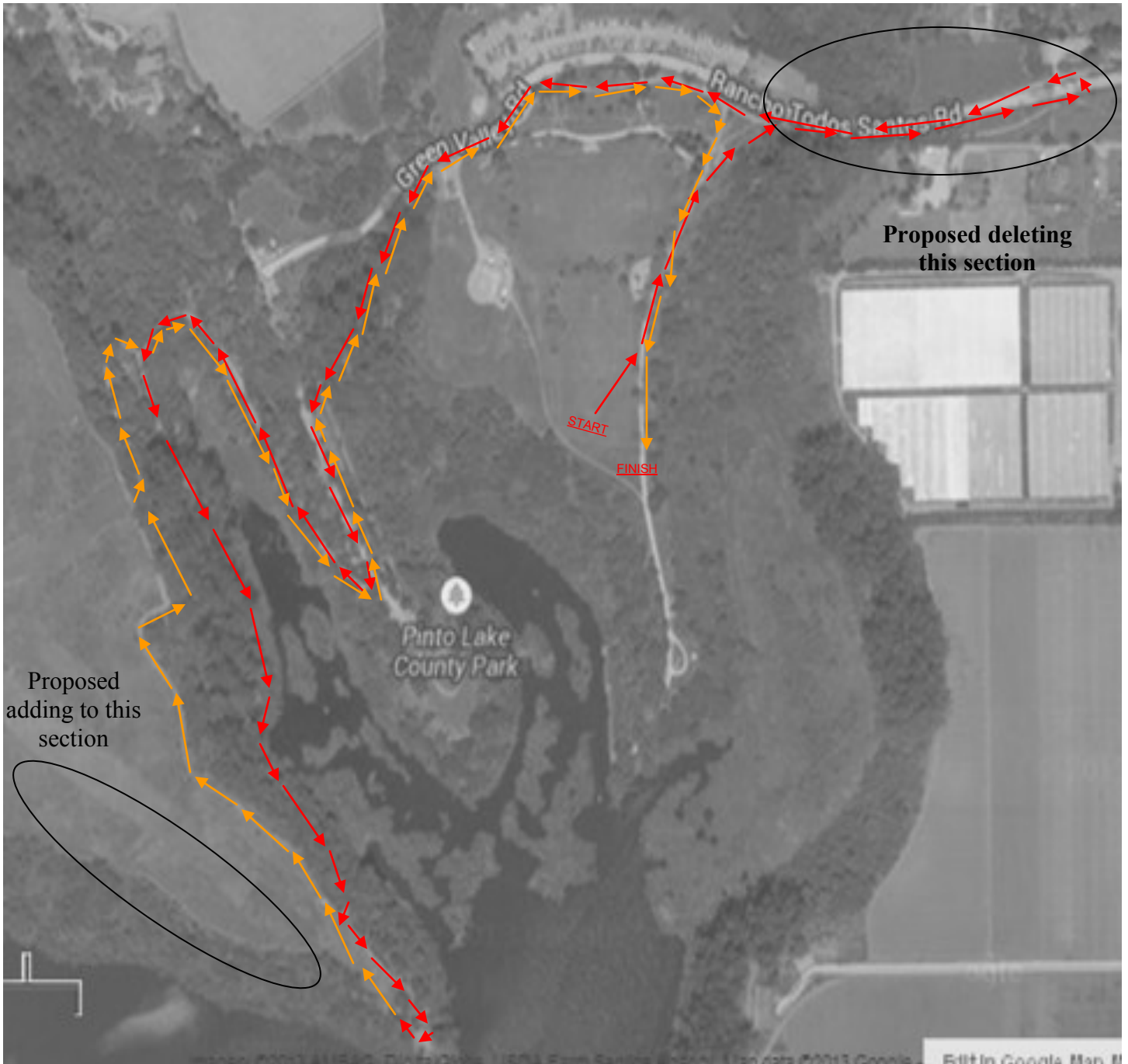


Pinto Lake County Park

2.9 miles

Directions: (From Northbound Hiway 1) Take Green Valley Rd./Harkins Slough Exit 426 keep right and travel approximately 3.7 miles. Pinto Lake County Park will be on your left. (From Westbound Hiway 129) Take right onto Lakeview Rd (1.1 miles), then left on College Rd which becomes Holohan Rd (2.2 miles), then right on Green Valley Rd. (1.7 miles) Pinto Lake County Park is on your left.



- Outbound route
- Return route