

Photo by Phillip Enbody

# 1993 California State High School CROSS COUNTRY PREVIEW

Compiled by Doug Speck

(By Ray Scofield/Doug Speck-Southern Section, Dennis McClanahan- San Diego Section, Ray Carmona-L.A. Section, Steve Ward/Dennis DeWitt-Central Section, Willie Hamatz/Hal Daner-Central Coast Section, Peter Brewer/North Coast Section, Steve Fagundes/Sac Joaquin Section, Jim Eckman/Yreka HS) Thanks to Mike Kennedy for his invaluable help as always.

The times quoted in this article are from the obvious Track distances (800m-1600m-3200m unless noted) or from the Woodward Park (State and Foot Locker Regional Course --note name change for 1993 from Kinney-- WOODARD PARK COURSE TIMES NOTED WITH "w" AFTER TIME) or Mt. SAC Course used for Southern Section Championship action (and runs fairly close to the Woodward Park course--MT. SAC TIMES NOTED WITH "m" AFTER THE TIME).

*A THANKS TO JIM DUEL FROM THE STATE CIP OFFICE WHO SENT OUT QUESTIONS TO THE STATE'S SCHOOLS, AND A SPECIAL THANKS TO THOSE COACHES WHO TOOK THE TIME TO FILL THEM OUT AND RETURN THEM. EVERY LITTLE BIT HELPS.*

## Girls

### ■ Division I

1. Agoura/SS
  2. Peninsula (Rolling Hills)/SS
  3. Mt. Carmel (San Diego)/SD
  4. Irvine/SS
  5. Esperanza (Anaheim)/SS
  6. Belmont (L.A.)/LA
  7. El Toro/SS
  8. Thousand Oaks/SS
  9. Clovis West (Clovis)/CE
  10. Capistrano Valley (Mission Viejo)/SS
- Coach Bill Duley's Agoura/SS group will

once again be the beacon of excellence against which all in the state will measure themselves, with the Chargers able to challenge for a mythical national title with the Fall season that this team is capable of. Amy Skiersz (17:24m-4:53.97-11:00.97), third last year in the Kinney National Finals, and the nation's finest prep harrier with World Championship experience in the sport last spring, and Kay Nekota (18:18-11:11.35) ably lead Division II sizewise Agoura (but we'll assume that Coach Duley will wish, as always, to wade his special group in against the best).

A trio of traditional powers will battle for the State Meet plaques (given to the first three teams). Peninsula (Rolling Hills)/SS has a fine foursome in Molly Mehlberg (18:31m-11:17.5), Jamie Artzner (18:49m-2:17.17-5:09.2), Mary Blake (19:16m-11:45.0), and Lynn Snyder (19:50m-5:10.0-11:16.8). Mt. Carmel (San Diego)/SD, third last year here, has Melanie Pickett (18:59w 10th 92-11:44.59), Courtney Kurth (19:19w 24th) and four others back for Coach Dennis McClanahan. 1992 runner-up Irvine/SS has Erin Livermore (18:59m), sister Alice (19:35m), and Jennifer Gillis (19:23w-2:19.04).

Coach Rich Medellin's Esperanza (Anaheim)/SS team was vastly improved last Fall, with Carrie Caulkins (18:50m 9th 92-4:59.35-11:04.49) and Courtney Pugmire (19:23m 2:16.77) ready to move up with the State's elite and a national top-25 ranking.

Belmont (L.A.)/LA, with Yolanda Gomez (19:30w-5:24.65) and Imelda Flores (19:42w), and El Toro/SS, led by Bree Frigo (5:19.2), will be strong. Thousand Oaks/SS has a frightening soph trio in Patricia Gibby (18:39m-5:09.78), Kim Mortensen (18:42m 16th 92-5:12.74-11:05.46), and Tara Marsden (19:03w 16th 92), and with Coach Jack Farrell's ability to develop runners the sky could be the limit with a talented newcomer or two. Clovis West/CE, 9th in 1992, has Serena Johnson (19:13w 21st) and Marci Lawson (19:45w-11:30.69) leading a capable five,

with Capistrano Valley (Mission Viejo)/SS Meghan Mayes (19:35m 5:05.67-11:17.04) on top of a good squad.

Madera/CE, with Sherie Donovan (18:48w 10th 92-5:08.08-11:19.1), Hart (Newhall)/SS, with Krissy Schranz (19:52m-11:40.45) and Jessica De la Cerda (19:52m-2:19.3-5:20.2), and Upland/SS are squads that will press those rated in the top ten.

Poway/SD, Rancho Bernardo (San Diego)/SD, with Karen Richter (5:11.58-11:02.63), and Bakersfield/CE could be factors here. Los Alamitos/SS, Chino/SS, with Tania Nunez (19:24w), Arroyo Grande/SS, with Mindy Hagstrom (18:50m), Saugus/SS, and Alta Loma/SS, with the fine soph duo of Amber Davidson (18:50m 15th 92) and September Cortes (19:05m) are other talented squads at this level. Nevada Union (Grass Valley)/SJ, led by Jami Nelson (19:14w) and Julie Hassan (19:57w) could be a factor here. Santa Teresa (San Jose) is improved from the Central Coast Section.

Sac Joaquin stars Valerie Cornwall (Turlock)/SJ 11:39.4, Dawn Cabitac (Florin, Sacramento)/SJ 11:53.5, and Irene Hobbs (Atwater)/SJ (4:49.41500m)/SJ were strong during the spring track season. Claire Becker (Bonita Vista, Chula Vista)/SD, a foreign exchange student, was San Diego runner-up at this level with excellent 4:56.20 from the spring track season. Southern Section stars Amy Van Atta (Buena, Ventura)/SS was 18:59m and Rebecca Villegas (Rialto)/SS was 19:10m in 1992. Roseanna Heagerty (Birmingham, Van Nuys)/LA was 19th 1992 at 19:09w. Julia Stamps will be a ninth grader at Santa Rosa HS this fall, with some very, very impressive times last spring as a eighth grader at Rincon Junior High, racing 4:38.35 for 1500 meters, 5:07.39 for a mile, 10:01.7 for 3000 meters, and 10:57.76 for a full two miles. Her poise and competitiveness at meets up through the U.S. Junior Nationals in Track indicated she will make an immediate big impact at the prep level. Merced star, Grace Dumell, has moved to Ohio.

*continued next page...*



Photo by Phillip Enbody

# 1993 California State High School CROSS COUNTRY PREVIEW

Compiled by Doug Speck

(By Ray Scofield/Doug Speck-Southern Section, Dennis McClanahan- San Diego Section, Ray Carmona-L.A. Section, Steve Ward/Dennis DeWitt-Central Section, Willie Hamatz/Hal Daner-Central Coast Section, Peter Brewer/North Coast Section, Steve Fagundes/Sac Joaquin Section, Jim Eckman/Yreka HS) Thanks to Mike Kennedy for his invaluable help as always.

The times quoted in this article are from the obvious Track distances (800m-1600m-3200m unless noted) or from the Woodward Park (State and Foot Locker Regional Course --note name change for 1993 from Kinney--WOODARD PARK COURSE TIMES NOTED WITH "w" AFTER TIME) or Mt. SAC Course used for Southern Section Championship action (and runs fairly close to the Woodward Park course--MT. SAC TIMES NOTED WITH "m" AFTER THE TIME).

*A THANKS TO JIM DUEL FROM THE STATE CIF OFFICE WHO SENT OUT QUESTIONS TO THE STATE'S SCHOOLS, AND A SPECIAL THANKS TO THOSE COACHES WHO TOOK THE TIME TO FILL THEM OUT AND RETURN THEM. EVERY LITTLE BIT HELPS.*

## Girls

### ■ Division I

1. Agoura/SS
  2. Peninsula (Rolling Hills)/SS
  3. Mt. Carmel (San Diego)/SD
  4. Irvine/SS
  5. Esperanza (Anaheim)/SS
  6. Belmont (L.A.)/LA
  7. El Toro/SS
  8. Thousand Oaks/SS
  9. Clovis West (Clovis)/CE
  10. Capistrano Valley (Mission Viejo)/SS
- Coach Bill Duley's Agoura/SS group will

once again be the beacon of excellence against which all in the state will measure themselves, with the Chargers able to challenge for a mythical national title with the Fall season that this team is capable of. Amy Skieresz (17:24m-4:53.97-11:00.97), third last year in the Kinney National Finals, and the nation's finest prep harrier with World Championship experience in the sport last spring, and Kay Nekota (18:18-11:11.35) ably lead Division II size-wise Agoura (but we'll assume that Coach Duley will wish, as always, to wade his special group in against the best).

A trio of traditional powers will battle for the State Meet plaques (given to the first three teams). Peninsula (Rolling Hills)/SS has a fine foursome in Molly Mehlberg (18:31m-11:17.5), Jamie Artzner (18:49m-2:17.17-5:09.2), Mary Blake (19:16m-11:45.0), and Lynn Snyder (19:50m-5:10.0-11:16.8). Mt. Carmel (San Diego)/SD, third last year here, has Melanie Pickett (18:59w 10th 92-11:44.59), Courtney Kurth (19:19w 24th) and four others back for Coach Dennis McClanahan. 1992 runner-up Irvine/SS has Erin Livermore (18:59m), sister Alice (19:35m), and Jennifer Gillis (19:23w-2:19.04).

Coach Rich Medellin's Esperanza (Anaheim)/SS team was vastly improved last Fall, with Carrie Caulkins (18:50m 9th 92-4:59.35-11:04.49) and Courtney Pugmire (19:23m 2:16.77) ready to move up with the State's elite and a national top-25 ranking.

Belmont (L.A.)/LA, with Yolanda Gomez (19:30w-5:24.65) and Imelda Flores (19:42w), and El Toro/SS, led by Bree Frigo (5:19.2), will be strong. Thousand Oaks/SS has a frightening soph trio in Patricia Gibby (18:39m-5:09.78), Kim Mortensen (18:42m 16th 92-5:12.74-11:05.46), and Tara Marsden (19:03w 16th 92), and with Coach Jack Farrell's ability to develop runners the sky could be the limit with a talented newcomer or two. Clovis West/CE, 9th in 1992, has Serena Johnson (19:13w 21st) and Marci Lawson (19:45w-11:30.69) leading a capable five,

with Capistrano Valley (Mission Viejo)/SS Meghan Mayes (19:35m 5:05.67-11:17.04) on top of a good squad.

Madera/CE, with Sherie Donovan (18:48w 10th 92-5:08.08-11:19.1), Hart (Newhall)/SS, with Krissy Schranz (19:52m-11:40.45) and Jessica De la Cerda (19:52m-2:19.3-5:20.2), and Upland/SS are squads that will press those rated in the top ten.

Poway/SD, Rancho Bernardo (San Diego)/SD, with Karen Richter (5:11.58-11:02.63), and Bakersfield/CE could be factors here. Los Alamitos/SS, Chino/SS, with Tania Nuñez (19:24w), Arroyo Grande/SS, with Mindy Hagstrom (18:50m), Saugus/SS, and Alta Loma/SS, with the fine soph duo of Amber Davidson (18:50m 15th 92) and September Cortes (19:05m) are other talented squads at this level. Nevada Union (Grass Valley)/SJ, led by Jami Nelson (19:14w) and Julie Hassan (19:57w) could be a factor here. Santa Teresa (San Jose) is improved from the Central Coast Section.

Sac Joaquin stars Valerie Cornwall (Turlock)/SJ 11:39.4, Dawn Cabitac (Florin, Sacramento)/SJ 11:53.5, and Irene Hobbs (Atwater)/SJ (4:49.41500m)/SJ were strong during the spring track season. Claire Becker (Bonita Vista, Chula Vista)/SD, a foreign exchange student, was San Diego runner-up at this level with excellent 4:56.20 from the spring track season. Southern Section stars Amy Van Atta (Buena, Ventura)/SS was 18:59m and Rebecca Villegas (Rialto)/SS was 19:10m in 1992. Roseanna Heagerty (Birmingham, Van Nuys)/LA was 19th 1992 at 19:09w. Julia Stamps will be a ninth grader at Santa Rosa HS this fall, with some very, very impressive times last spring as a eighth grader at Rincon Junior High, racing 4:38.35 for 1500 meters, 5:07.39 for a mile, 10:01.7 for 3000 meters, and 10:57.76 for a full two miles. Her poise and competitiveness at meets up through the U.S. Junior Nationals in Track indicated she will make an immediate big impact at the prep level. Merced star, Grace Dumell, has moved to Ohio.

*continued next page...*

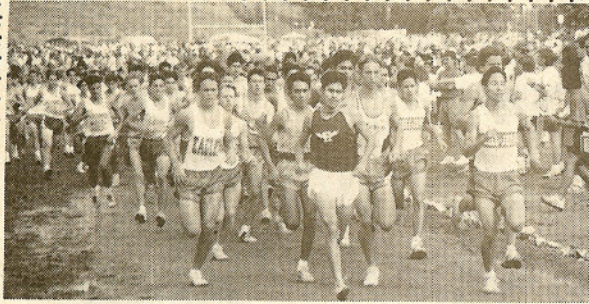


Photo by Phillip Enbody

# 1993 California State High School CROSS COUNTRY PREVIEW

Compiled by Doug Speck

(By Ray Scofield/Doug Speck-Southern Section, Dennis McClanahan- San Diego Section, Ray Carmona-L.A. Section, Steve Ward/Dennis DeWitt-Central Section, Willie Hamatz/Hal Daner-Central Coast Section, Peter Brewer/North Coast Section, Steve Fagundes/Sac Joaquin Section, Jim Eckman/Yreka HS) Thanks to Mike Kennedy for his invaluable help as always.

The times quoted in this article are from the obvious Track distances (800m-1600m-3200m unless noted) or from the Woodward Park (State and Foot Locker Regional Course --note name change for 1993 from Kinney--WOODARD PARK COURSE TIMES NOTED WITH "w" AFTER TIME) or Mt. SAC Course used for Southern Section Championship action (and runs fairly close to the Woodward Park course--MT. SAC TIMES NOTED WITH "m" AFTER THE TIME).

*A THANKS TO JIM DUEL FROM THE STATE CIF OFFICE WHO SENT OUT QUESTIONS TO THE STATE'S SCHOOLS, AND A SPECIAL THANKS TO THOSE COACHES WHO TOOK THE TIME TO FILL THEM OUT AND RETURN THEM. EVERY LITTLE BIT HELPS.*

## Girls

### ■ Division I

1. Agoura/SS
  2. Peninsula (Rolling Hills)/SS
  3. Mt. Carmel (San Diego)/SD
  4. Irvine/SS
  5. Esperanza (Anaheim)/SS
  6. Belmont (L.A.)/LA
  7. El Toro/SS
  8. Thousand Oaks/SS
  9. Clovis West (Clovis)/CE
  10. Capistrano Valley (Mission Viejo)/SS
- Coach Bill Duley's Agoura/SS group will

once again be the beacon of excellence against which all in the state will measure themselves, with the Chargers able to challenge for a mythical national title with the Fall season that this team is capable of. Amy Skieresz (17:24m-4:53.97-11:00.97), third last year in the Kinney National Finals, and the nation's finest prep harrier with World Championship experience in the sport last spring, and Kay Nekota (18:18-11:11.35) ably lead Division II sizewise Agoura (but we'll assume that Coach Duley will wish, as always, to wade his special group in against the best).

A trio of traditional powers will battle for the State Meet plaques (given to the first three teams). Peninsula (Rolling Hills)/SS has a fine foursome in Molly Mehlberg (18:31m-11:17.5), Jamie Artzner (18:49m-2:17.17-5:09.2), Mary Blake (19:16m-11:45.0), and Lynn Snyder (19:50m-5:10.0-11:16.8). Mt. Carmel (San Diego)/SD, third last year here, has Melanie Pickett (18:59w 10th 92-11:44.59), Courtney Kurth (19:19w 24th) and four others back for Coach Dennis McClanahan. 1992 runner-up Irvine/SS has Erin Livermore (18:59m), sister Alice (19:35m), and Jennifer Gillis (19:23w-2:19.04).

Coach Rich Medellin's Esperanza (Anaheim)/SS team was vastly improved last Fall, with Carrie Caulkins (18:50m 9th 92-4:59.35-11:04.49) and Courtney Pugmire (19:23m 2:16.77) ready to move up with the State's elite and a national top-25 ranking.

Belmont (L.A.)/LA, with Yolanda Gomez (19:30w-5:24.65) and Imelda Flores (19:42w), and El Toro/SS, led by Bree Frigo (5:19.2), will be strong. Thousand Oaks/SS has a frightening soph trio in Patricia Gibby (18:39m-5:09.78), Kim Mortensen (18:42m 16th 92-5:12.74-11:05.46), and Tara Marsden (19:03w 16th 92), and with Coach Jack Farrell's ability to develop runners the sky could be the limit with a talented newcomer or two. Clovis West/CE, 9th in 1992, has Serena Johnson (19:13w 21st) and Marci Lawson (19:45w-11:30.69) leading a capable five,

with Capistrano Valley (Mission Viejo)/SS Meghan Mayes (19:35m 5:05.67-11:17.04) on top of a good squad.

Madera/CE, with Sherie Donovan (18:48w 10th 92-5:08.08-11:19.1), Hart (Newhall)/SS, with Krissy Schranz (19:52m-11:40.45) and Jessica De la Cerda (19:52m-2:19.3-5:20.2), and Upland/SS are squads that will press those rated in the top ten.

Poway/SD, Rancho Bernardo (San Diego)/SD, with Karen Richter (5:11.58-11:02.63), and Bakersfield/CE could be factors here. Los Alamitos/SS, Chino/SS, with Tania Nunez (19:24w), Arroyo Grande/SS, with Mindy Hagstrom (18:50m), Saugus/SS, and Alta Loma/SS, with the fine soph duo of Amber Davidson (18:50m 15th 92) and September Cortes (19:05m) are other talented squads at this level. Nevada Union (Grass Valley)/SJ, led by Jami Nelson (19:14w) and Julie Hassan (19:57w) could be a factor here. Santa Teresa (San Jose) is improved from the Central Coast Section.

Sac Joaquin stars Valerie Cornwall (Turlock)/SJ 11:39.4, Dawn Cabitac (Florin, Sacramento)/SJ 11:53.5, and Irene Hobbs (Atwater)/SJ (4:49.41500m)/SJ were strong during the spring track season. Claire Becker (Bonita Vista, Chula Vista)/SD, a foreign exchange student, was San Diego runner-up at this level with excellent 4:56.20 from the spring track season. Southern Section stars Amy Van Atta (Buena, Ventura)/SS was 18:59m and Rebecca Villegas (Rialto)/SS was 19:10m in 1992. Roseanna Heagerty (Birmingham, Van Nuys)/LA was 19th 1992 at 19:09w. Julia Stamps will be a ninth grader at Santa Rosa HS this fall, with some very, very impressive times last spring as a eighth grader at Rincon Junior High, racing 4:38.35 for 1500 meters, 5:07.39 for a mile, 10:01.7 for 3000 meters, and 10:57.76 for a full two miles. Her poise and competitiveness at meets up through the U.S. Junior Nationals in Track indicated she will make an immediate big impact at the prep level. Merced star, Grace Dumell, has moved to Ohio.

*continued next page...*

## PREP PREVIEW

### ■ Division II

1. Edison (Huntington Beach)/SS
2. Ocean View (Huntington Beach)/SS
3. El Capitan (Lakeside)/SD
4. Corona/SS
5. Bishop Amat (La Puente)/SS
6. Canyon (Anaheim)/SS
7. Davis/SJ
8. Mission San Jose (Fremont)/NC
9. Elsinore (Lake Elsinore)/SS
10. San Pasqual (Escondido)/SD

The nation's best dual meet this fall will involve top twenty-five ranked nationally Sunset League rivals Edison/SS and Ocean View/SS from Huntington Beach. Defending champions Ocean View improved as much as any team in state history over the length of the season in 1992, with Taryn Lawson (18:34m 9th 92 11:30.69), Melissa Johnson (19:33m 22nd 92), Christy Bradshaw (19:18m 25th 92-2:22.49), Celeste Johnson (19:46w 31st 92), and Shawn Regnier (20:08w 44th 92) back from the championship squad. Edison has Elyse Homberger (18:30m 6th 92 10:54.58), Jandee Evans (19:28m 24th 92-5:18.12), and Jennifer Formosa (11:33.07) leading another strong team. Their match-ups should be exciting to watch, with both among the top fifteen teams in the nation.

El Capitan (Lakeside)/SD has great recent tradition, with Jenny Card (19:12w 12th 92-11:49.0) leading six from the 1992 fifth place squad. Corona/SS, sixth in 1992, has Claris Fernandez (19:01m 11th 92-5:07.43-11:30.60) and Tiffany Rasmussen (19:49w).

Bishop Amat (La Puente)/SS, 10th last Fall, has six back, with Malinalli Martinez (20:01m-5:22.22), Megan Stewart (20:07m), and Nancy Villanueva (20:25m) leading a group that could surprise. Canyon (Anaheim)/SS will have one of the nation's best, Kim Nelson (18:38w 2nd 92 5:06.17-10:48.13) leading a strong team. Davis/SJ, 7th last Fall, has Saskia Comes (19:51w) and Liz Verutti (20:05w-11:17.30) leading four back from 1992's successful group. Mission San Jose (Fremont)/NC has Elissa (19:07w 10th 92 5:14.59-11:00.56) and Lori (19:52w-5:19.84-11:09.97) Riedy and four others from its 1992 9th place team. Elsinore (Lake Elsinore)/SS has strong leaders in Candie White (19:19m) and Jamie Bascom (19:21m-5:20.6-11:12.76). Traditional power San Pasqual (Escondido)/SD rounds out the top ten.

North Bakersfield/CE, with LaTanya Sumlin



**SHERRIE  
DONOVAN**

*Photo by Keith Conning*



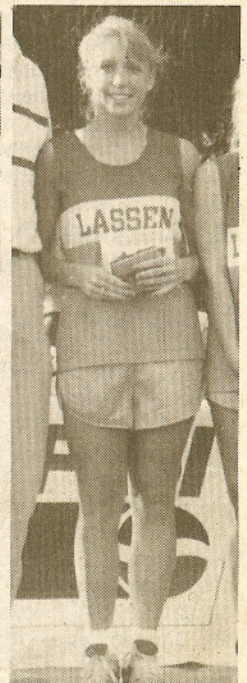
**JENNIFER  
FORMOSA**

*Photo by Doug Speck*



**NICOLE  
SILVA**

*Photo by Keith Conning*



**DEEDEE  
GORBET**

*Photo by Bill Cockerham*

(19:43w-2:15.66), Righetti (Santa Maria)/SS, led by Molly Lawrence (19:18m), Arvin/CE, with Maribel Salinas (19:33w-21st 92), Tustin/SS, Trabuco Hills (Mission Viejo)/SS, featuring soph Peggy Hall (20:19m-2:18.81), Del Campo (Fair Oaks)/SJ, led by Sarah Dickerman (19:00w-12th 92 Div I-11:11.98), and Karella (Anaheim)/SS, with Jaime Vacairo (19:58m) can threaten the top ten. Up from Division III this year are Laguna Hills/SS, with Heather McGlone (19:00m 14th 92 Div III-11:35.14), and El Modena (Orange)/SS, with Tara Whitfield (19:19w 17th 92 Div III) and Tracie Adams, are both traditionally strong schools that can challenge at this level.

Casa Roble (Orangevale)/SJ, Claremont/SS, San Benito (Hollister)/CCS, with Maria Pleyte (5:21.4-11:10.73), and Reedley/CE, with Gelina Hall (19:38w) and Annabel Ortiz (11:37.34) are other strong squads. Wood (Vacaville)/SJ has Magi Martinez (19:41w 30th 92 Div III-11:12.45) as a senior with a respectable supporting cast.

Carrie Garritson (Buena Park)/SS (17:46w) will regain her interscholastic eligibility this Fall after establishing residency at her new school, with the 19th place finisher in the Kinney (Foot Locker in 1993) National Championships last Fall recording a 9:49 3000m on the track this spring as an "unattached" competitor. Jamie Whitmore (Valley, Sacramento)/SJ was 15th in 1992 at 19:20 with 11:38.6 during the spring Track season. Gabriela Rodriguez (Oxnard)/SS was 19:06m in 1992 with a fine 10:52.34 for 3200m in the Spring, with Lyad Gozal (Beverly Hills)/SS 11:19.62 another good Southern Section individual. Deborah Bleisch (Silver Creek, San Jose)/CCS was third in the CCS last year (19:18w) and raced fine 5:05.08/11:06.91 clockings in track. Jenny Mortensen (Redwood, Visalia)/CE (5:03.56/11:12.3) was Central Section Champion at this level with Joanne Cerri (Downey, Modesto)/SJ (5:01.50) also strong on the track. The Central Section's Kami Schofield (Mt. Whitney, Visalia)/CE 19:28w

*continued next page...*

## PREP PREVIEW

could be a factor. Keep an eye out for Mary Cobb (Santa Barbara), last year one of New England's top prep runners at Pittsfield, Massachusetts, where she raced 4:59.45 to win the State Mile title and was thirteenth in the very tough Kinney Northeast Regional competition in Cross-Country last November.

### ■ Division III

1. Corona del Mar (Newport Beach)/SS
2. Los Gatos/CCS
3. Bishop O'Dowd (Oakland)/NC
4. Aptos/CCS
5. Carondolet (Concord)/NC
6. Santa Margarita (Rancho SM)/SS
7. St. Ignatius (San Francisco)/CCS
8. South Pasadena/SS
9. Newport Harbor (Newport Beach)/SS
10. Del Oro (Loomis)/SJ

Defending champs, Corona del Mar (Newport Beach)/SS, returns its top four from the 1992 Championship run-Tracy Clark (18:19m 5th 92 11:09.27), Brooke Meek (19:22w 19th 92), Dresden Howell (19:06m 22nd 92-5:17.5), and Heather Taketa (19:33w 25th 92). Volleyball star, soph Kelly Campbell had a magnificent spring in her first season of running for the Sea Kings, racing 4:59.75 and 10:51.28 with Coach Bill Sumner's crew moving to a status among the nation's very best if Campbell can fit the harrier sport in with her V-ball activities. Either way they can engrave the trophy right now for the nation's top under-1000 student body team.

A group of four will battle behind CdM. Los Gatos/CCS is here enrollment-wise, with everybody back from their 1992 fourth place Div II team. Miranda Middlecoff (18:56w 5th 92 Div II-5:17.4- 11:20.66) and Holly Malander (19:19w 14th 92 Div II-5:14.17) ably lead Coach Willie Hartmatz's 1993 powerhouse. Bishop O'Dowd/NC lost individual champion Miesha Marzell, but Nicky Saleta (19:17w 16th 92) and Angelica Randall (19:28w 29th 92-2:19.6-5:06.27) capably lead the next six who return from the 1992 third place squad. Aptos/CCS is very strong, with the trio of Nicole Silva (19:10w-5:11.0-11:06.77), Megan Randall (19:22w 23rd 92) and Liz Crouch (19:16w 26th 92-2:16.57-5:06.97) anchoring what will be another fine team for Coach Bill Hotchkiss. Carondolet (Concord)/NC has the trio of Carolyn Colyar (19:54w-5:12.0), Laura Kuhl (20:06w), and Katie Owen (20:18w-11:42.1) leading a North Coast power that should keep O'Dowd honest locally.

Santa Margarita (Rancho SM)/SS has a

deep squad that has its scoring returnees total just over 102:00 on the tough Mt. SAC course. St. Ignatius (San Francisco)/CCS, has Ann Baldelli (19:27w 20th 92- 5:06.09), and the much improved duo of Laura Sandoval (11:23.35) and Danielle Dekker (11:16.0). South Pasadena/SS has Sarah Etman (19:36m-5:03.04) on top of another fine team. Newport Harbor (Newport Beach)/SS will have a tough time placing in the top three in its very tough Sea View League, but Gwen Twist (19:03w 11th 92-11:38.22) and Kyndra Smith (19:42m 32nd 92) will lead one of the state's best groups at this level. Del Oro (Loomis)/SJ has Marinda Funk (19:46w-11:46.1), Sarah Pope (20:22w), and Talia Starkey (20:25w) leading everyone back from a 1992 tenth place team.

Central Valley/NO has Carie Irwin (20:09w 47th 92-11:48.49) and Christina Peacock (20:20w 54th 92) leading what will be a very tough team.

Nordhoff (Ojai)/SS, up an enrollment division level this Fall, lost Division IV champion Karen Bockel to graduation (and back to homeland Germany), with Monica Berlin (19:19w 6th 92 Div IV 2:20.79) and Heather Dron (20:08w 25th Div IV) a solid duo for Coach Ken Reeves to build his yearly power from at this more challenging level. San Luis Obispo/SS, South Hills (West Covina)/SS, and Newbury Park/SS, with Shawna Cottriel and Terin Mathews, are very capable Southern Section teams.

Our Lady of Peace (San Diego)/SD has soph Michelle O'Connor (19:17w 16th 92) leading returnees off its 1992 ninth place team. St. Francis (Mountain View)/CCS has Anniken Iversen (20:16w) leading a good trio from its 1992 sixth place team, with Palo Alto/CCS, featuring Janice Kim (4th CCS Div III) and Arianna Joyce, another good team from the mid-state area.

La Canada/SS has fine leadership up front with Carlene Pengra (18:54w 6th 92) and Sarah Dien (19:34m-5:18.53), with Rio Hondo League rival (South Pasadena up above is also a part of this tough group) San Marino/SS fine junior Allison Twist (19:37m 5:19.5 11:20.3) as a number one runner. Paradise/NO has six back from a 1992 eleventh place team, with Kimberly Dean (20:26w) on top, and Moreau (Hayward)/NC a capable group. Presentation (San Jose)/CCS, has talented star Christine Stavalone (19:56w 17th 92 Div IV 2:17.0-5:00.81 mile) leading the team in an enrollment division jump.

Amy Hallbauer (Pleasant Valley, Chico)/NO was 12th last fall at 19:03w-11:27.3, with her team also picking up Becca Mendon (19:56w 18th 92 Div IV) from Bidwell JHS in Chico. Leanna DeGazon (Bishop Montgomery, Torrance)/SS (19:22m) and Julie Marshall (Cala-bassas)/SS was 19:25m are strong from the Southern Section. Lis Renteria (Westmont, Campbell)/CCS had a fine fresh year in 1992, with Marisa Daniel (Granada, Livermore)/NCS 11:29.4 in the spring, and Kristie Johnston (Central, Fresno) (19:45w) a fine track season with 2:11.65 for 2nd at State over 800m.

### ■ Division IV

1. Lassen (Susanville)/NO
2. Chaminade (Canoga Park)/SS
3. Ursuline (Santa Rosa)/NC
4. Yreka/NO
5. McFarland/CE
6. Dixon/SJ
7. Maranatha (Sierra Madre)/SS
8. Arcata/NC
9. Mammoth (Mammoth Lakes)/SS
10. Half Moon Bay/CCS

Lassen (Susanville)/NO, under veteran Coach Bob Wall, came around steadily in 1992 to take this division over a fine Nordhoff (Ojai) group 72-75. The Northern Section power has to cope this time around with being the season long favorites, with veterans Christy Bill (20:14w 27th 92), Sally Pyle (19:34w 31st 92-11:44.36), Dee Dee Gorbet (20:20w 34th 92), and Kristy Andrews (20:27w 38th 92) forming a solid foursome to build another championship squad on.

Chaminade (Canoga Park)/SS has Mary Higgins (19:44m- 5:22.34-11:24.35), Becky Trefacanty (19:50m), and Yvonne Goodson (11:29.54) leading a team that has dropped down a division, and will be the Southern challenge to defending champs Lassen.

Ursuline (Santa Rosa)/NC was seventh in 1992, with Brenna Nurmi (19:54w 16th 92) leading everyone else back off that squad. Yreka/NO returns another fine group, with six of the top seven from last year's sixth place squad, led by Traci Anderson (20:06w 23rd 92) and Jamie Herbst (20:25w 36th 92-5:21.98).

McFarland/CE was ninth in 1992, with its top six back, led by Lucia Sanchez (20:30w 39th 92) and Cindy Carter (20:52w 52nd 92). Dixon/SJ is tough from the Sac Joaquin section, with 92's eighth place team having six members return, led by Liz Spurlock

*continued next page...*

## PREP PREVIEW

(20:53w). Marantha (Sierra Madre)/SS will continue its fine tradition, led by soph Tracy Maxwell (20:14w 28th 92) and five others back from its 1992 tenth place team. Arcata/NC, fourth last Fall here, will have another strong team, with Kim Eagan (20:55w) and Nuonchan Chum (20:58w) leading five veterans back. Mammoth (Mammoth Lakes)/SS has Sierra Domaille (19:43w 13th) and Trish Lowerre (20:40m) leading a strong group. Half Moon Bay/CCS was eleventh in 1992, with numbers 2-7 back from that team.

Louisville (Woodland Hills)/SS has Shaluinn Fullove (20:07m-5:10.69-11:32.17) and Colleen Lavery (20:35m) leading, with 1992 Southern Section powers Temescal Canyon (Lake Elsinore)/SS and Murrieta Valley/SS probably moving up a class or two with enrollment jumps. Laguna Beach/SS has Tara O'Connell (20:54m) leading what should be a fine team.

St. Anthony (Long Beach)/SS has fine junior Jackie Guesno (19:45m 41st 92) and Mary Helen Gonzalez (20:44w) returning, with Morro Bay/SS Faye Roundy (19:30m 14th 92), and traditional power Fillmore/SS also strong from the Southern Section. York (Monterey)/CCS could be a factor.

Marissa Hurwitz (Bishop's, La Jolla)/SD was 7th here at 19:24 (11:37.16) last Fall, with Lori Fancon (Taft)/CE 11th at 19:36 (5:01.98). Megan Ericson (Whittier Christian, La Habra/SS) was 19:28m last Fall. Heather Ryan (Buchanan, Clovis)/CE was 19:53w (25th 1992). Danielle Wall (Carmel)/CCS was CCS champ at this level last Fall.

### Boys

#### ■ Division I

1. Thousand Oaks/SS
2. Santa Ana/SS
3. Madera/SS
4. Arroyo Grande/SS
5. Hart (Newhall)/SS
6. Peninsula (Rolling Hills)/SS
7. Palmdale/SS
8. Canyon (Canyon Country)/SS
9. Redlands/SS
10. Mira Mesa (San Diego)/SD

They take no prisoners in the greater Ventura County Marmonte League of the Southern Section, with the level of competition spewing forth teams and individuals who com-

pete for national championships each fall. 1993 will be no different, with the Thousand Oaks/SS Boys squad of Coach Jack Farrell the potential to be something really special! The foursome of Brandon Del Campo (15:27m 24th 92-9:31.13), Jeff Fischer (15:29 8th 92-8:53.04 3000m), Kevin Marsden (15:48m 30th 92-4:22.53- 9:45.63), and Chad Aldrich (15:37m 48th 92-4:25.38) are definitely a group with potential to build on, with the Lancers second last Fall Div I and sixth in the Harrier National final 1992 team rankings. We'll trust Coach Farrell's ability to dig up a fifth scorer and keep everyone healthy.

Back a ways a pack of five will battle for the second place State Meet plaque. Santa Ana/SS, eighth last year, returns its top five scorers from the State Meet, with Federico Duran (15:54m 40th 92) and Juan Zaragoza (16:16m) leading a talented and deep crew. Madera/CE is always tough, with Eric Kropf (15:33w 21st 92-9:39.44) and Ricky Chavez (15:31w 29th 92-4:18.09) and a possible big-time transfer making Coach Dennis DeWitt's 93 squad as good as they have ever been. Arroyo Grande/SS has Eric Dunn (15:30w 5th 92 4:14.21) and vastly improved Pat Gerrity (16:10m 9:19.80) leading what will be a strong group. Hart (Newhall)/SS has supers Brett Strahan (15:37w 7th 92 4:13.90-9:28.5), Gavin Klinger (16:11w 36th 92-4:16.7-9:25.4), and Jose Erazo (16:20m) leading the nation's #2 ranked 1992 team into the post-Coach Gene Blankenship era. Peninsula (Rolling Hills)/SS was fifth last Fall, with Ken Goodrich (15:59m 43rd 92), Hide Sano (16:04m-4:22.98), and Steve Schultz (16:23m) leading what will be another strong squad for Coach Joe Kelly.

Palmdale/SS, the Southern Section's top soph-frosh team the last season or two, will break through to the big-time this Fall, with tenth grader Marcus Castro (16:19m) and junior Louie Alvarez (4:26.16) leading a very talented crew. Canyon (Canyon Country)/SS came around super in 1992 for a fourth place statewide effort Div II, with Jon Bishop (15:46m 14th Div II 92) and Mike Wenz (16:15m-1:53.82) heading another tough group making an enrollment jump. Redlands/SS had Tedros Berhane (15:51m-9:48.3), Andy Christopherson (16:29m) on top of a fine squad. Mira Mesa (San Diego)/SS was ninth last Fall, with numbers 2-7 returning from that young squad (five sophs and one frosh in the group), with soph Kevin Bowes

9:36.7 and frosh Larry Henderson 4:26.50/9:39.4 in the spring.

Traditional power Dana Hills (Dana Point)/SS will have Clint Allen (16:13m) and John Biondillo (16:26m) leading. San Diego/SD, with Mebratom Keflezighi (15:19w 3rd 92 4:11.48-9:09.26), one of the nation's best in track, and Jose Melgar (15:46w 13th 92-4:22.9), could be very tough with the development of some back-up. Saddleback (Santa Ana)/SS has junior Rafael Santamaria (15:59m), with Hesperia/SS James Lyon (16:29m). Bellarmine (San Jose)/CCS has soph Adrian Webb (16:30w) and junior Tom Becker (16:34w-4:22.4) leading the 1993 Varsity, with Todd Dando 4:23.1 in the Spring. Belmont (L.A.)/LA has Richardo Valenzuela (16:19w 45th 92-4:26.97) and a hard-working back-up crew, with Buena (Ventura)/SS Dennis Sweningson (15:59m) and Brett Butolph (4:26.5) team leaders. San Gabriel/SS, with Oscar Estrada (16:05m-4:26.45- 9:45.0) and Rowland (Rowland Heights)/SS, with Miguel Martinez (16:03m) are other squads that could develop.

Jaime Martinez (Orange)/SS will be one of the nation's top individuals, with a tenth place finish in the Kinney (Foot Locker in 1993) Nationals, the third underclass finisher nationally in that event, with a 15:14w for fourth at State Div I-4:13.24- 9:06.48. Scott Cervelli (Santa Teresa, San Jose)/CCS was 15:36w 6th 1992-1:55.37-4:20.2. Adalberto Sanchez (Capistrano Valley, Mission Viejo) was 9:18.89 last spring in track. Jeff McCarty (Ayala, Chino)/SS was 16th Div III 16:08m-9:39.0 in 92-93.

#### ■ Division II

1. Mission Bay (San Diego)/SD
2. Katella (Anaheim)/SS
3. Camarillo/SS
4. Agoura/SS
5. San Pasqual (Escondido)/SD
6. La Habra/SS
7. Villa Park/SS
8. Jesuit (Sacramento)/SJ
9. Claremont
10. De la Salle (Concord)/NCS

Defending Champion, and #13 ranked nationally at the end of the season, Mission Bay (San Diego)/SD, returns its first four scorers from that team, with Devin Elizondo (15:43w 8th 92- 4:18.55-9:20.40), Mario Marquez (15:56w 13th 92-9:43.0), Roger Romero (16:11w 24th 92-4:21.47), and David Levy

*continued next page...*

## PREP PREVIEW

(16:17w 34th 92 but 1:57.32-4:12.86 in track) an adequate crew to build on in quest of high national honors.

Katella (Anaheim)/SS, third in 1992 (and 24th ranked nationally), will not give an inch in the psychological battle for the top, with Mike Moreno (15:38m 6th 92-9:40.36), Delphino Resendez (15:55m-9:44.69), Steve Pham (16:19m), and Alberto Cruz (16:35m) very determined for a championship in 1993.

Camarillo/SS has the kind of returning crew that Coach Mike Smith does wonders with. Jeremy Park (16:07m-9:43.33), Eliazar Hernandez (16:15m 9:32.28), Ron Franco (16:24w), and Ben Hill (16:33w) help give this division frightening depth! Agoura/SS, part of the Marmonte League along with Thousand Oaks/SS and Camarillo/SS (now you see what we mean!) was second last year, with John Greene (15:38m 16th 92-9:29.04), Craig Wilson (16:20m), and soph Adam Eyre (16:32w)

making the Chargers just fine this time around too. The Marmonte League will have ten male runners who could go under 15:30 on a flat three mile cross country course! San Pasqual (Escondido)/SD was seventh last year, with numbers 2-7 back, led by Manuel Romero (16:24w 41st 92), Chris Ruhe (16:37w) and Matt Silva (16:37w and 1:52.23- 4:26.5 in track). La Habra/SS continues to have Mahon family members who can fly, with Brendon (15:55w 4th 92-4:26.86-9:40.40) this year's leader with some good back-up as the Highlanders move up an enrollment division.

Villa Park/SS has Blake Schumacher (16:27m) and Phil Sitner (16:33m-4:24.04) leading another fine crew for Coach Dave White, with Jesuit (Sacramento)/SJ Matt Farley (15:50w 10th 92 and 4:20.0-9:04.39 in track) and Ned Presnall (16:12w 32nd 92) for Coach Walt Lange to start his 93 group with.

Claremont/SS has David Constantine (16:34m) leading what will be a good team,

with De la Salle (Concord)/SJ probably back at this enrollment level after a 92 attempt at Division I, where they were a fine fourth place. John Kelly (16:20w 47th 92 Div I) will lead DLS in 1993.

• Monte Vista (Danville)/NC put together a fine spring Track season, with Brock Tessman (1:54.80-4:19.30) leading a tough, close-packed veteran crew. Fremont (Sunnyvale)/CCS has five back from its 1992 12th place team, with Mike Powers (16:15w 29th 92- 1:53.76-4:26.3) leading what could be a strong team. CCS rival Leland (San Jose)/CCS was 9th in 1992, with a trio back from that team. Southern Section Inland Empire teams, Norte Vista (Riverside)/SS, led by Mike Pendergraph (15:43m 17th 92) and Raul Magana (16:08m), and Corona/SS, with fine junior Ian Enriquez (16:12m) and Greg Potts (16:32m), will push each other. North Bakersfield/CE was 10th in 1992, with five back from that team. La Puente/SS was one of the state's most improved programs with its fourth place performance Div III last Fall. Juan Rios (16:24m 23rd 92) and Fili Bahene (16:25w 25th 92) lead five who return from the 1992 group moving up a level. El Modena (Orange)/SS, led by soph Ryan Emeneker (16:35m), Laguna Hills/SS, with Jeff Domis (16:16m) and Charles Gatchell (16:39m), and Bishop Amat (La Puente)/SS, with Byron Hardie (4:24.87) leading, are other Southern Section teams moving up to this level in enrollment in 1993.

Individually, Matt Creason (Eureka)/NC was 5th 1992 at 15:39w-4:23.15-9:17.88, with fine soph Mario Argueta (Jurupa Valley)/SS 16:11m as a frosh at Mt. SAC last Fall. From the NCS Keith Kennedy (San Leandro)/NCS was Section runner-up with a 9:35.3 from the spring, with John Atwood (Castro Valley)/NCS (16:11w 25th 92 9:35.35) another possible individual factor. Eduardo Verdejo (Foothill, Bakersfield)/CE (16:01w-9:30.8) will be another top individual, with Rey Sanchez (Delano)/CE (4:22.82) also impressive from the Central Section. From the CCS, Luis Granado (North, Salinas)/CCS (9:38.7), Lee Fernandez (Salinas)/CCS, and Greg Tademy (Silver Creek, San Jose)/CCS, with a fine 4:18.70 from the spring track season, could place high. Ruben Carillo (Hilltop, Chula Vista) was third in the tough San Diego section at this level last Fall. Adam Loo (Crescenta Valley, La Crescenta)/SS was 16:16m in 1992. Konrad Knutsen (Del Campo, Fair

*continued next page...*



**JAIME  
MARTINEZ**  
Photo by Doug Speck



**MIKE  
MORENO**  
Photo by Doug Speck



**JASON  
BALKMAN**  
Photo by Bill Cockerham



**NICK  
RATTRAY**  
Photo by Doug Speck

## PREP PREVIEW

Oaks/SJ has run 9:18.14 for the 3200m distance, with Alejandro Ramirez (Stagg, Stockton) Sac Joaquin Section runner-up Div I in 1992.

### ■ Division III

1. Estancia (Costa Mesa)/SS
2. St. Augustine (San Diego)/SD
3. Covina/SS
4. Newport Harbor (Newport Beach)/SS
5. Gunn (Palo Alto)/CCS
6. San Marino/SS
7. Nordhoff (Ojai)/SS
8. Sonora/SJ
9. Livermore/NCS
10. Mira Costa (Manhattan Beach)/SS

Estancia (Costa Mesa)/SS will hone itself on tough Southern Section Orange County competition, with Johann Appel (16:13m) and Peter Ho (16:32m) leading a solid group. Traditional power St. Augustine (San Diego)/SD was sixth in 1992, with most of that varsity crew returning. Fine miler Mark Hauser (16:00w 8th 92-4:11.33) and Dan O'Connor (16:21w 21st 92) lead a squad that has been maturing to championship quality over the last two years. Junior Martin Reyes was 9:47.45 for St. Augustine in the spring. Covina/SS has Bhagiva Goonetilleke (16:32m-9:49.9) and Joseph Pelaez at the front of a tight packing squad that can threaten for the title. Newport Harbor (Newport Beach)/SS, the defending champions here, returns four off that team, including Trent Bryson (16:28m 35th 92), Dylan Guggenmos (16:34m) and Shahan Dezhad (16:34m), with developing depth making a repeat possible for Coach Bim Berry's crew. The above mentioned teams are within an eyelash on the team stopwatch, with this probably the toughest division to call team-wise.

Gunn (Palo Alto)/CCS was eighth in 1992 with runners 2-7 from that squad back. Neal Harder (16:46 46th 92-9:39.02) and Mark Tompkins (4:26.7) lead Gunn into 1993. San Marino/SS, second last year, has Warren Wolf (15:58m 17th 92-9:25.4), Lee Zuckerman (16:14m 24th 92), and junior Richard Chisholm (16:35m) to lead Coach Phil Ryan's 93 group. Nordhoff (Ojai)/SS, traditionally near the top of Div IV, has stars Javier Ramirez (15:51m 2nd 92-9:39.16) and Micah Robles (15:56w 4th 92) to build on in 1993 as the community has grown in population. Sonora/SJ, led by Darren Holman (16:11 15th 92-9:47.1), has its scoring five back from the 1992 tenth place

team. Livermore/NC has established a great tradition, with Steve Immel (16:22w 20th 92-9:29.57) and Micheil Jones (16:34w 34th 92-9:43.1) leading four back from a seventh place 1992 team. Mira Costa (Manhattan Beach)/SS has Matt Harris (16:07m) leading a good group.

Los Gatos/CCS, ninth in 1992, has Brian Stannard (16:40w 38th 92) and soph Ben Abeln (16:56w 58th 92) and two others back from that team. St. Francis (Mountain View)/CCS was young in 1992, with Palo Alto/CCS and Lick (San Jose)/CCS appearing to be other respectable groups from the Central Coast Section. The Southern Section returns a good group at this level. Paso Robles/SS, with Chris Harrison (16:29m), Corona del Mar (Newport Beach)/SS, with Brian Slingsby (16:35m), and Dos Pueblos (Goleta)/SS, with Jeff Loomis (16:10m-9:40.80) on top, will be strong. The huge Southern Section does not stop there, with Rubidoux (Riverside)/SS, led by star Rondie Gibbs (15:53m 5th 92-9:36.23) and St. Francis (La Canada)/SS could develop into fine teams this Fall.

Jason Balkman (Lynbrook, San Jose)/SS was the individual champion at this level last year as just a soph at 15:38w, then continued to improve mightily in the spring to 4:22.28 for 1600m and 9:06.90 for 3200m. Ryan Bartell (West Hills, Santee)/SD was 10th 1992 at 16:03w-9:48.37, with Brian Meyer (Rio Americano, Sacramento)/SJ 16:07w for 13th at this level. Ryan Wilkinson (16:03m) and Matt Huss (16:23m-4:25.61), both of Santa Margarita, Rancho SM/SS, are solid individuals.

### ■ Division IV

1. Morro Bay/SS
2. McFarland/CE
3. Fillmore/SS
4. Desert Christian (Lancaster)/SS
5. Piedmont/NC
6. Maranatha (Sierra Madre)/SS
7. Salesian (L.A.)/SS
8. Lassen (Susanville)/NO
9. Arcata/NC
10. Santa Ynez/SS

A real dog-fight will take place here. Morro Bay/SS, third last go-round, has its top five back, with three sophs and a frosh in that scoring group in 1992. Juniors Dave Mitchell (15:44m 7th 92 4:23.77) and Joey Taverner (15:45m 7th 92-9:30.65) lead the veteran powerful Pirate team. McFarland/CE returns a fine foursome from its 92 Championship

team in Gabriel Diaz (16:36w 20th 92), Galvin Gonzalez (16:38w 24th 92), Benjamin Galvan (16:42w 25th 92), and soph Jose Sanchez (16:06w-4:26.37).

Fillmore/SS was fourth in 1992, with Oswaldo Servin (16:27m 15th 92), Eduardo Flores (16:45m), Miguel Ibarra (16:48w 30th 92), and three others back from the 92 powerhouse.

Desert Christian (Lancaster)/SS, one of the nation's top Cross-Country team, runner for runner with only about 150 students (92-93 class a dozen twelfth graders!), has Matt Novotney (16:46m) leading a fine 93 team. Piedmont/NC has individual divisional champion Steve Brown (15:48w 1st 92-9:22.4) leading the top team at this very tough level of the North Coast Section. Maranatha (Sierra Madre)/SS is always strong, seventh in 1992, with Darin Dreves (16:38w 22nd 92) and Joseph Garcia (16:32m 45th 92) battling Desert Christian at the division I "A" level in the Southern Section. Salesian (L.A.)/SS is next best out of the very deep Southern Section at this level, with junior Eduardo Santillan (16:49m) leading the Mustangs in 1993. Lassen/NO (Susanville) had a fine underclass group last Fall, and will be the Section favorites in 1993. Arcata/NC was ninth in 1992, with Cody (16:52w 35th 92) and Tyler (16:58w 38th 92) Clark-Thompson leading another solid 93 team. Santa Ynez/SS, with Ryan Myers (16:54m), returns at under 90:00 for five at Mt. SAC.

Branson (Ross)/NCS has junior Jon Genant leading three from the team who finished within the top seven of the North Coast Div IV race last Fall, with traditional power Yreka/NO led by super soph Aaron Gillen (15:55w 3rd 92). Taft/CE was sixth in 1992, with soph Micah Fuson (17:00w 40th 92) leading four back from that squad. Pacific Grove/CCS has six back from its 1992 tenth place squad, with Lars Mininni (17:08w 49th 92), Ryan Bartlett, and Charles Engel leading the Breakers in 1993 against CCS rivals Half Moon Bay/CCS, which has five runners back from its eleventh place group, junior Justin Stern (17:29w) and soph James Harrison leading. Southern Section teams Oak Park/SS, with Nick Rattray (16:20m-9:39.05), and Woodcrest Christian (Riverside)/SS can be a factor at this level.

Nate Bowen (16:41m) and Kevin Purcell (16:50m) return from Crossroads (Santa Monica)/SS. Chris Torres (Avenal)/CE was 9:45.19 for 3200m in the spring. ♦